



FOR LEASE

Creekside Office Park
1641 Creekside Drive Folsom, CA

MEDICAL OFFICE SPACE



PROPERTY HIGHLIGHTS

- Suite 201 +/- 2,299 SF
- Centrally located in Folsom's Medical District
- Lease Rate \$1.95 MG
- TI allowance negotiable
- Direct access to Folsom Bike Trail
- Across the street from the Dignity Health Facility

For more information, click [HERE](#)

For more information, please contact:

BOB KUHL

Director

KW Commercial

Cell: 916.947.5060 Office: 916.235.9885

bob@bobkuhl.com

BRE Lic. # 606862

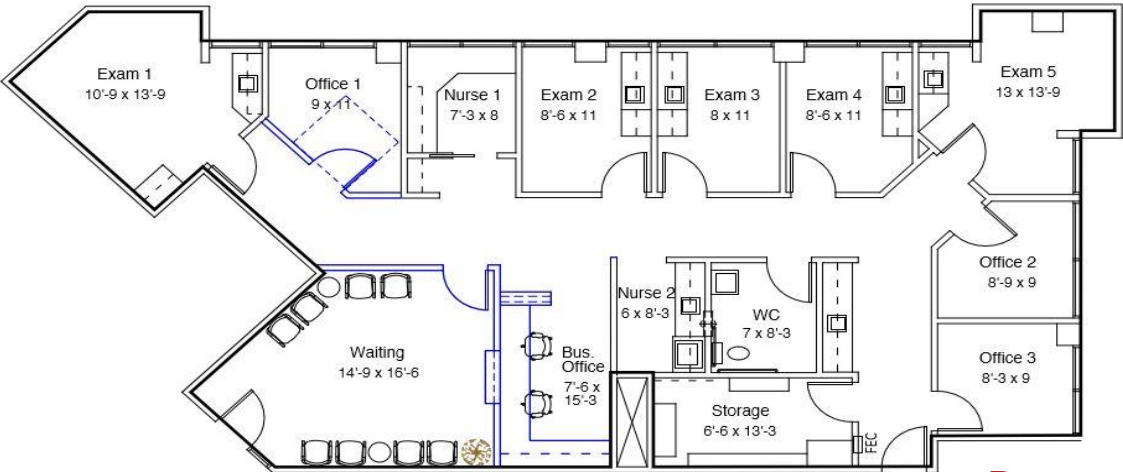
www.bobkuhl.com



KW Commercial | 548 Gibson Drive, Ste 200 | Roseville, CA 95661 | 916.788.8800 | License #1272617

The information contained herein was obtained from third parties, and it has not been independently verified by the real estate brokers. Buyers/tenants should have the experts of their choice inspect the property and information. Real estate brokers are not qualified to act as or select experts with respect to legal, tax, environmental, building construction, soils-drainage or other such matters.

Creekside Office Park
1641 Creekside Drive Folsom, CA



Proposed Plan

Available Units	Office SF	Lease Rate / SF
1641 Creekside Dr. Suite 201	+/- 2,299 RSF	\$1.95 MG

For more information,
please contact:

BOB KUHLM
Director
Cell: 916.947.5060 Office: 916.235.9885
bob@bobkuhl.com
BRE Lic. #:606862

KW Commercial | 548 Gibson Drive, Ste 200 | Roseville, CA 95661 | 916.788.8800 | License #1272617

The information contained herein was obtained from third parties, and it has not been independently verified by the real estate brokers. Buyers/tenants should have the experts of their choice inspect the property and information. Real estate brokers are not qualified to act as or select experts with respect to legal, tax, environmental, building construction, soils-drainage or other such matters.