

10,700 SF WAREHOUSE & LAYDOWN AREA

Industrial Park Road, Cadiz, OH 43907

EXECUTIVE SUMMARY



OFFERING SUMMARY

Lease Rate: \$11 PSF NNN

County: Harrison County

Township: Cadiz

Available SF: ±10,712 SF

Laydown Yard: 2 to 5 Acres Available

Total Lot Size: ±27 Ares

PROPERTY OVERVIEW

Industrial & Flex Office in Cadiz Energy Park available for lease.

LOCATION OVERVIEW

Located in Cadiz Energy Park next to MarkWest Energy Partners Utica Office & Plant – Solar Energy Equipment Supplier, J-W Energy, and Ohio Department of Transportation.

PROPERTY HIGHLIGHTS

- The building is 10,712 SF (103' x 104')
- 2 Total drive-thru doors
- Ceiling heights are between 24' and 33'-8"
- Office area can be built-out per tenant's individual needs
- Oversize Doors
- Approximately 1 acre of lay-down area (roughly 40,288 SF) with room to expand
- 30 Parking spaces

All information is from sources deemed reliable and is submitted subject to errors, omissions, change of price rental or other conditions, prior sale, lease or financing or withdrawal without notice.



Richard Beynon

412.261.3640

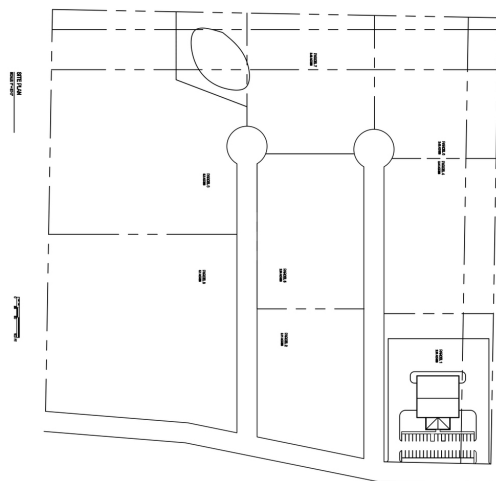
rbeynon@beynonandco.com

INDUSTRIAL PROPERTY FOR LEASE

10,700 SF WAREHOUSE & LAYDOWN AREA

Industrial Park Road, Cadiz, OH 43907

ADDITIONAL PHOTOS



COMMERCIAL
BEYNON & CO.
REAL ESTATE

Richard Beynon
412.261.3640
rbeynon@beynonandco.com