

For Lease

Office Building

202 - 994 SF | \$600.00 - 1,650.00 per month



Monticello Square

1018 Thomasville Rd
Tallahassee, Florida 32303

Property Description

First floor office space for lease conveniently located in the heart of midtown and just 1.1 miles from the Capitol. Utilities, janitorial, and on-site management are included in the lease rate. Great spaces and location for attorneys, lobbyists, non-profit organizations, and associations.

Available Spaces

Spaces	Lease Rate	Size (SF)
Suite 102 A	\$1,650 per month	994
Suite 100 A	\$600 per month	202



For more information

Jessica Halleck

O: 850 224 2300
jessica@talcor.com

Slaton Murray, CCIM

O: 850 224 2300
slaton@talcor.com



NO WARRANTY OR REPRESENTATION, EXPRESS OR IMPLIED, IS MADE AS TO THE ACCURACY OF THE INFORMATION CONTAINED HEREIN, AND THE SAME IS SUBMITTED SUBJECT TO ERRORS, OMISSIONS, CHANGE OF PRICE, RENTAL OR OTHER CONDITIONS, PRIOR SALE, LEASE OR FINANCING, OR WITHDRAWAL WITHOUT NOTICE, AND OF ANY SPECIAL LISTING CONDITIONS IMPOSED BY OUR PRINCIPALS. NO WARRANTIES OR REPRESENTATIONS ARE MADE AS TO THE CONDITION OF THE PROPERTY OR ANY HAZARDS CONTAINED THEREIN ARE ANY TO BE IMPLIED.

1018 Thomasville Road, Suite 200A,
Tallahassee, FL 32303
850 224 2300 tel
talcor.com



For Lease

Office Building

202 - 994 SF | \$600.00 - 1,650.00 per month (Full Service)

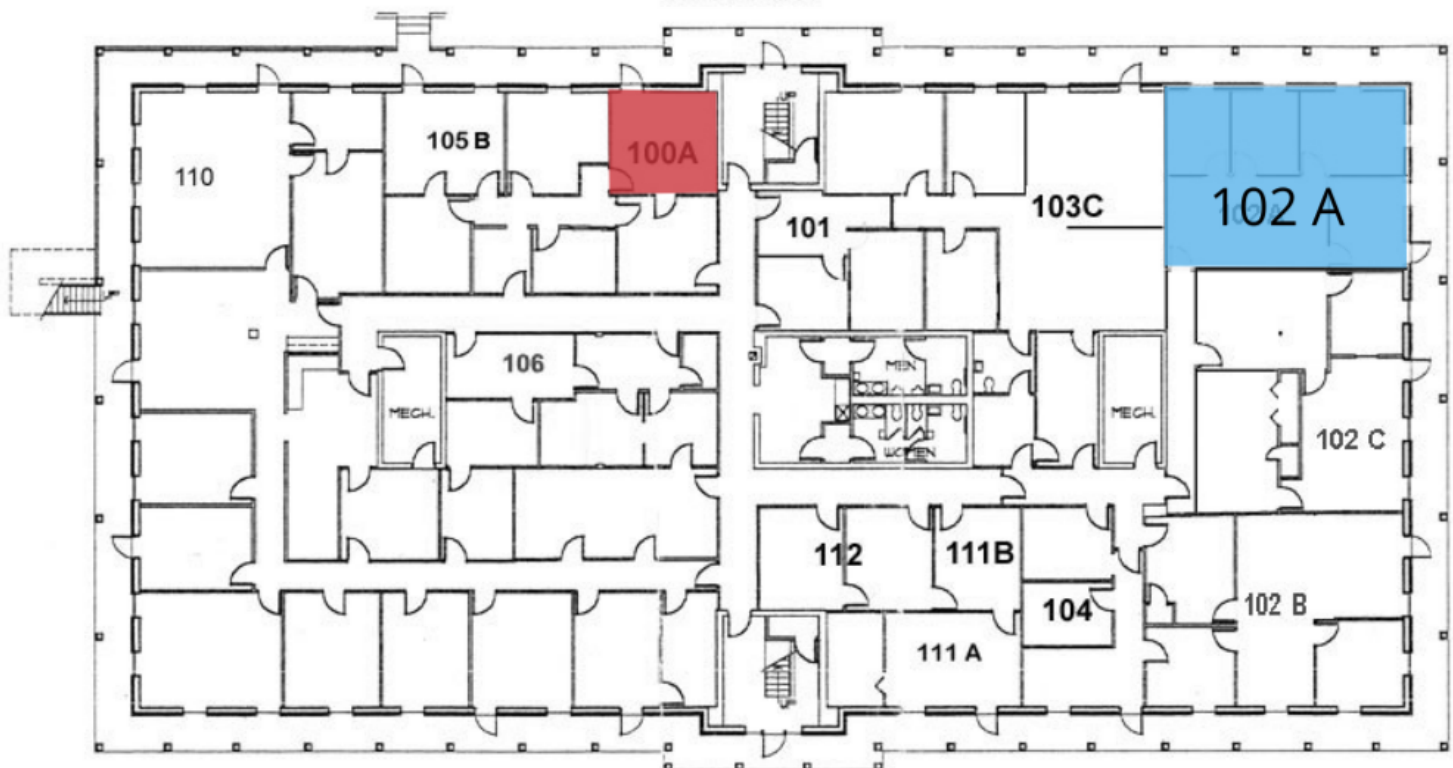
LEASE TYPE | Full Service

TOTAL SPACE | 202 - 994 SF

LEASE TERM | Negotiable

LEASE RATE | \$600.00 - \$1,650.00 per month

First Floor



AVAILABLE SOON

AVAILABLE

SUITE	TENANT	SIZE	TYPE	RATE	DESCRIPTION
Suite 102 A	Available	994 SF	Full Service	\$1,650 per month	Upgraded flooring, ground floor exterior entrance, reception, conference area, and 3 private offices. Available June.
Suite 100 A	Available	202 SF	Full Service	\$600 per month	Ground floor, single office suite with private exterior entrance.

For Lease

Office Building

202 - 994 SF | \$600.00 - 1,650.00 per month (Full Service)

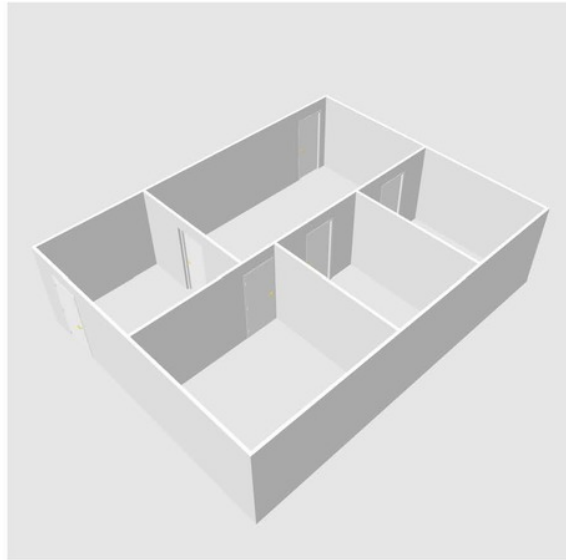
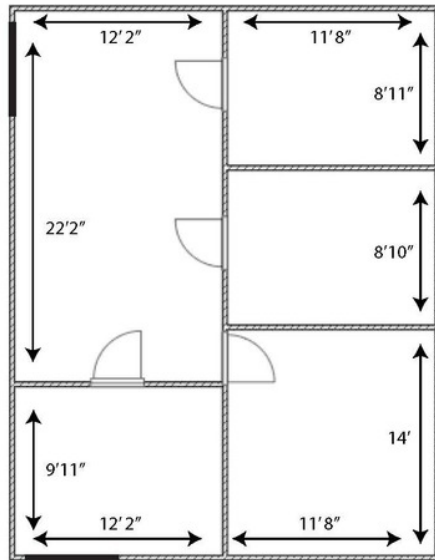


For Lease

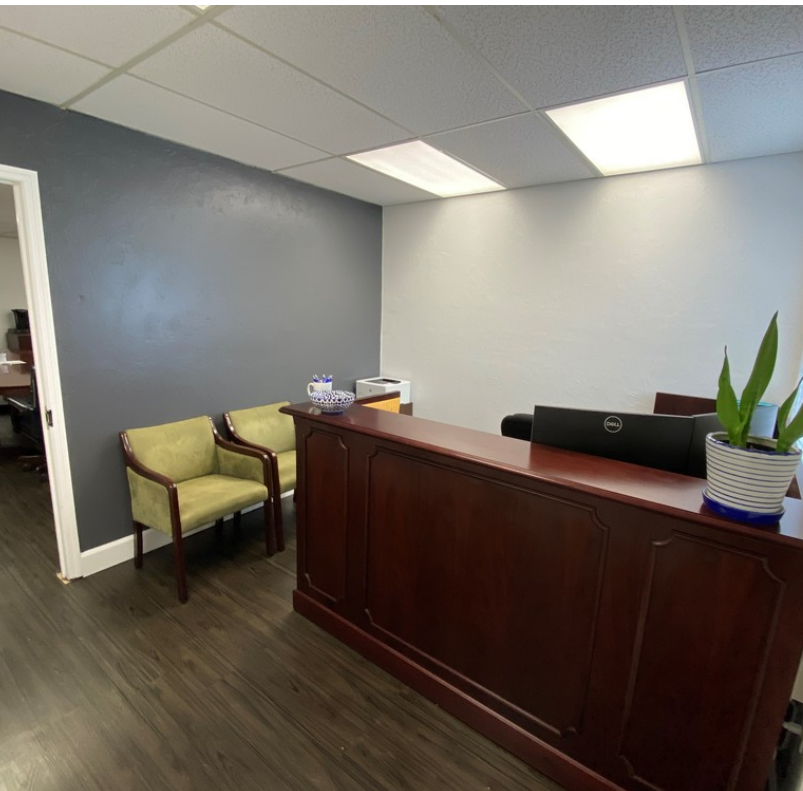
Office Building

202 - 994 SF | \$600.00 - 1,650.00 per month (Full Service)

1018 Thomasville Road | Suite 102A



All data is deemed reliable but is not guaranteed. All square footage and dimensions are approximate. Exact dimensions can be obtained by retaining the services of a professional architect or engineer. No representation is made as to the accuracy thereof, and such information is subject to errors, omission, or withdrawal without notice.



NO WARRANTY OR REPRESENTATION, EXPRESS OR IMPLIED, IS MADE AS TO THE ACCURACY OF THE INFORMATION CONTAINED HEREIN, AND THE SAME IS SUBMITTED SUBJECT TO ERRORS, OMISSIONS, CHANGE OF PRICE, RENTAL OR OTHER CONDITIONS, PRIOR SALE, LEASE OR FINANCING, OR WITHDRAWAL WITHOUT NOTICE, AND OF ANY SPECIAL LISTING CONDITIONS IMPOSED BY OUR PRINCIPALS. NO WARRANTIES OR REPRESENTATIONS ARE MADE AS TO THE CONDITION OF THE PROPERTY OR ANY HAZARDS CONTAINED THEREIN ARE ANY TO BE IMPLIED.

1018 Thomasville Road, Suite 200A,
Tallahassee, FL 32303

850 224 2300 tel

talcor.com

