

For Sale

Office Building

16,354 SF | \$900,000



\$300,000 Price Reduction

Hartsfield Building

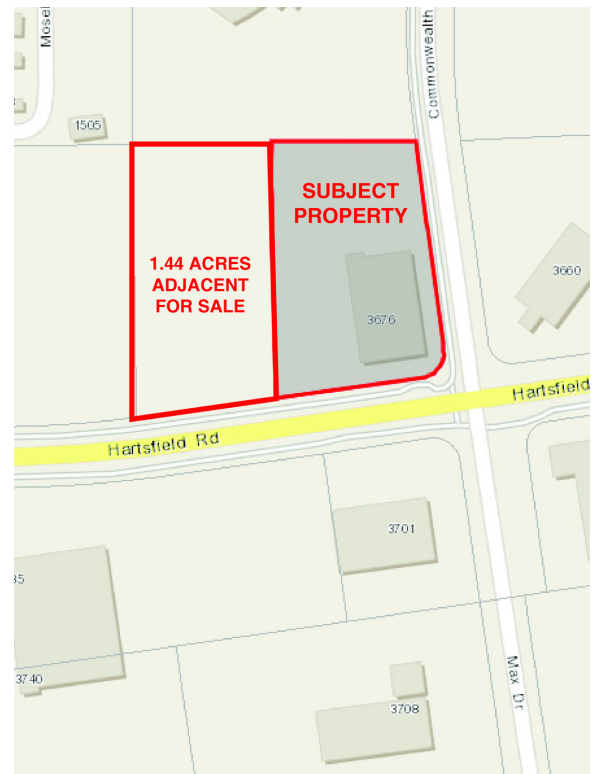
3676 Hartsfield Rd. Tallahassee, Florida 32303

Property Highlights

Property Description

Two story building with flexible floor plans. Both floors are ground level due to off-grade construction.

Sale Price: \$900,000



For more information

Eric Stockstill

C: 850 694 2021

eric@talcor.com



NO WARRANTY OR REPRESENTATION, EXPRESS OR IMPLIED, IS MADE AS TO THE ACCURACY OF THE INFORMATION CONTAINED HEREIN, AND THE SAME IS SUBMITTED SUBJECT TO ERRORS, OMISSIONS, CHANGE OF PRICE, RENTAL OR OTHER CONDITIONS, PRIOR SALE, LEASE OR FINANCING, OR WITHDRAWAL WITHOUT NOTICE, AND OF ANY SPECIAL LISTING CONDITIONS IMPOSED BY OUR PRINCIPALS. NO WARRANTIES OR REPRESENTATIONS ARE MADE AS TO THE CONDITION OF THE PROPERTY OR ANY HAZARDS CONTAINED THEREIN ARE ANY TO BE IMPLIED.

1018 Thomasville Road, Suite 200A,
Tallahassee, FL 32303

850 224 2300 tel

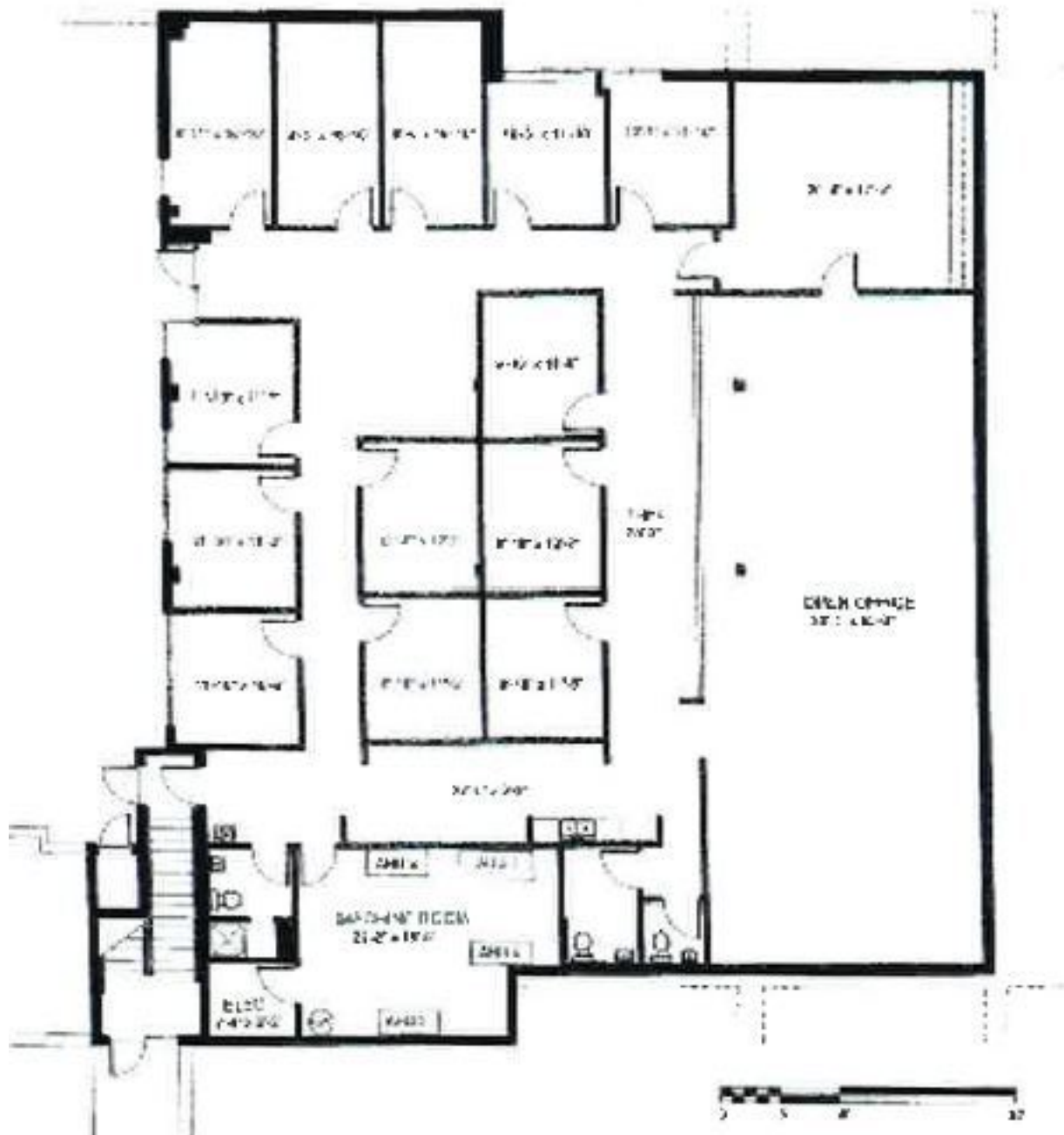
talcor.com



Additional Photos



Lower Level Floor Plan



Retail Map



16,000 +/- SF FOR SALE

Map data © 2021 Imagery © 2021, Maxar Technologies, U.S. Geological Survey, USDA Farm Service Agency