

3412 NW 178TH - ROSE LAKE OFFICE PARK

3412 NW 178TH, EDMOND, OK 73012



OFFERING SUMMARY

Sale Price:	\$400,000
Year Built:	2018
Building Size:	2,303 SF
Zoning:	Office
Market:	North
Price / SF:	\$173.69

PROPERTY OVERVIEW

These attractive garden style office buildings go quick. The building is divided into two units with separate entrances and contain approximately 1,150 square feet on each side. Each side features a reception area, conference room, kitchen/file area, ADA restroom and 3 executive offices. Finishes are Class "A" and include crown molding, granite tops and plenty of storage.

PROPERTY HIGHLIGHTS

3412 NW 178TH - ROSE LAKE OFFICE PARK

3412 NW 178TH, EDMOND, OK 73012

Property Name: 3412 NW 178th - Rose Lake Office Park
Property Address: 3412 NW 178th, Edmond, OK 73012
Property Type: Office
APN: 168574650
Building Size: 2,303 SF
Building Class: A
Zoning: Office
Cross Streets: 178th between May and Portland
Year Built: 2018
Number of Stories: 1

PROPERTY OVERVIEW

These attractive garden style office buildings go quick. The building is divided into two units with separate entrances and contain approximately 1,150 square feet on each side. Each side features a reception area, conference room, kitchen/file area, ADA restroom and 3 executive offices. Finishes are Class "A" and include crown molding, granite tops and plenty of storage.

LOCATION OVERVIEW

This new development is located on NW 178th between May and Portland. The development backs up to Rose Creek and features 8 garden style office buildings.



SALE HIGHLIGHTS

- Class "A" Finishes Throughout
- Efficient Floor Plan
- Ample Parking

GREG BANTA

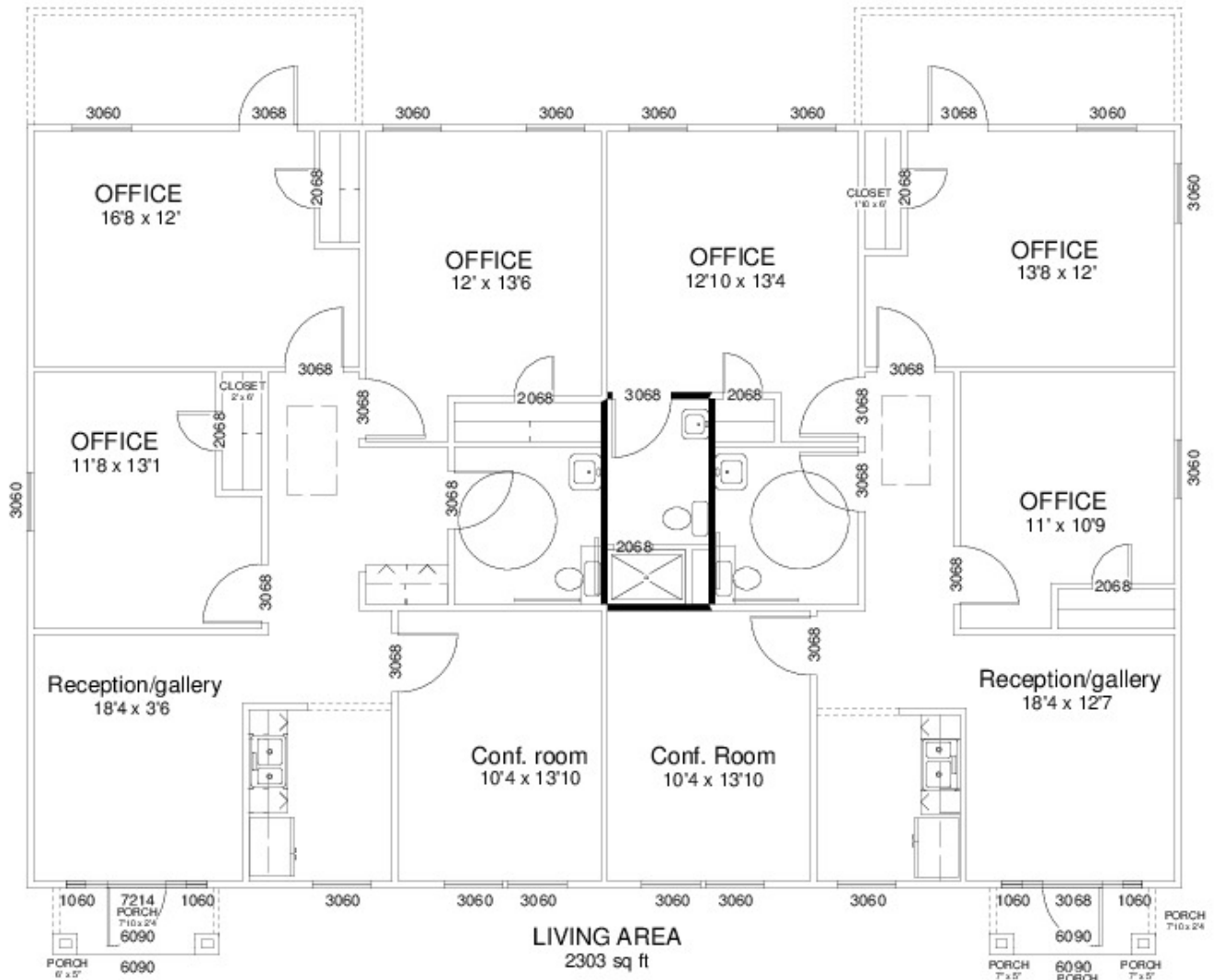
405.840.1600

GBANTA@THEBANTACOMPANIES.COM



3412 NW 178TH - ROSE LAKE OFFICE PARK

3412 NW 178TH, EDMOND, OK 73012



GREG BANTA

405.840.1600

GBANTA@THEBANTACOMPANIES.COM



3412 NW 178TH - ROSE LAKE OFFICE PARK

3412 NW 178TH, EDMOND, OK 73012

GREG BANTA

405.840.1600

GBANTA@THEBANTACOMPANIES.COM

