

FOR LEASE

3412 NW 178TH

EDMOND, OK 73012

FOR MORE INFORMATION

CALL ZACK CONROY

(253) 549-8701



BANTA
Property Group

BANTA PROPERTY GROUP, LLC

405.840.1600

BANTAPROPERTYGROUP.COM

308 SW 25TH, OKLAHOMA CITY, OK 73109

GREG BANTA

405.840.1600

GBANTA@THEBANTACOMPANIES.COM

3412 NW 178TH - ROSE LAKE OFFICE PARK

3412 NW 178TH, EDMOND, OK 73012



OFFERING SUMMARY

Available SF:	Fully Leased
Lease Rate:	Negotiable
Year Built:	2018
Building Size:	2,303 SF
Zoning:	Office
Market:	North
Submarket:	Edmond, Deercreek

PROPERTY OVERVIEW

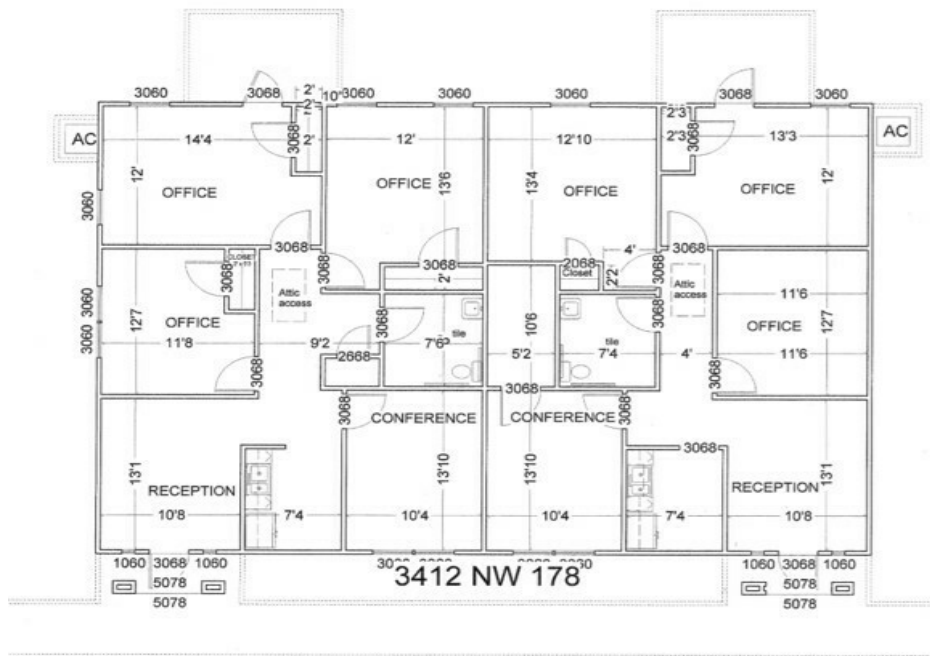
Each side of these well designed buildings features a reception area, conference room, kitchen/file area, ADA restroom and 3 executive offices. Finishes are Class "A" and include crown molding, granite tops and plenty of storage. The building offers a very functional floor plan and will be ready to be occupied by the end of April, 2023.

PROPERTY HIGHLIGHTS

- Efficient Floor Plan
- Ample Parking
- Easy access to the Kilpatrick Turnpike and Lake Hefner Parkway (I-44)

3412 NW 178TH - ROSE LAKE OFFICE PARK

3412 NW 178TH, EDMOND, OK 73012



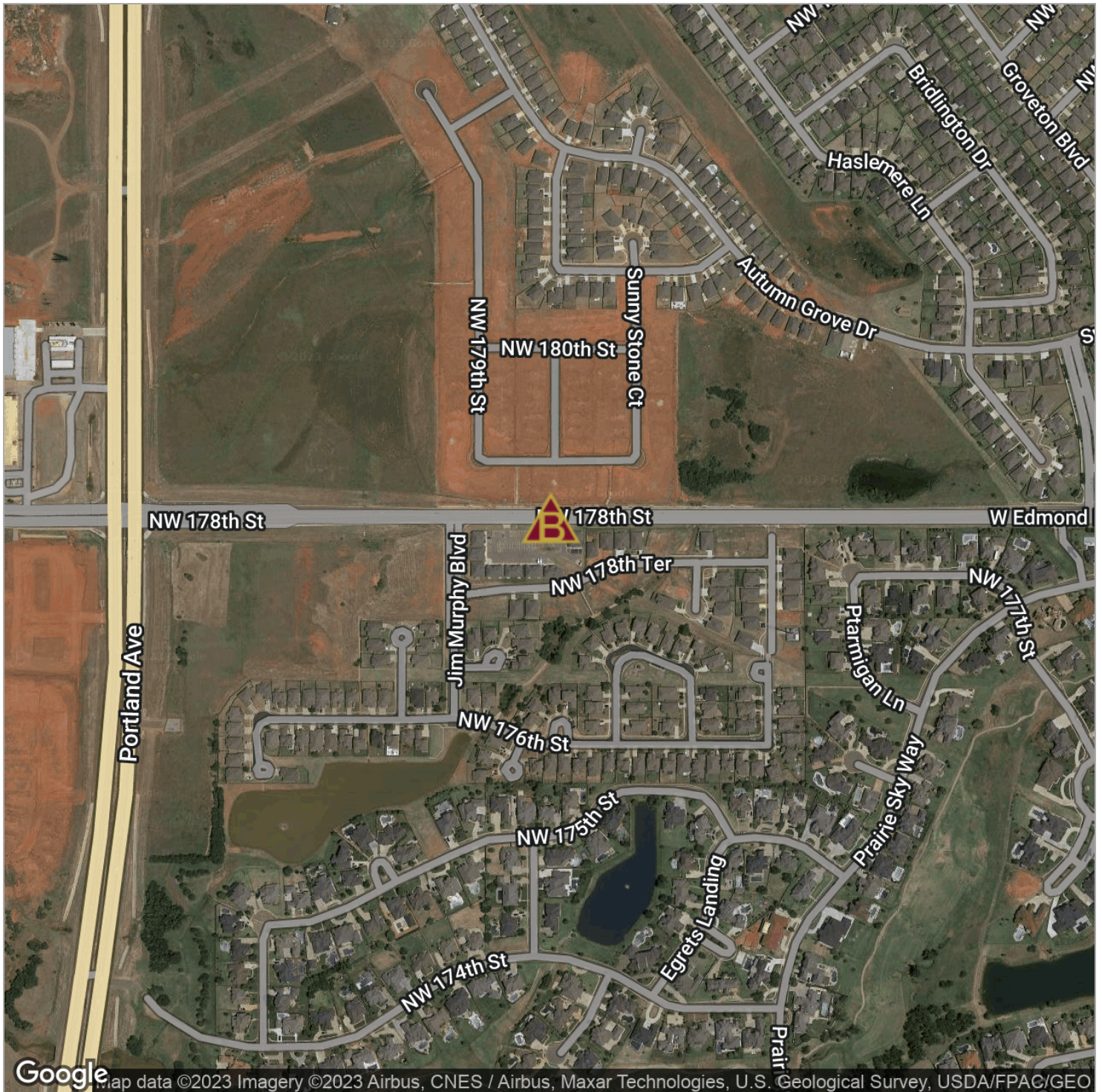
GREG BANTA

405.840.1600

GBANTA@THEBANTACOMPANIES.COM

3412 NW 178TH - ROSE LAKE OFFICE PARK

3412 NW 178TH, EDMOND, OK 73012



GREG BANTA

405.840.1600

GBANTA@THEBANTACOMPANIES.COM