

5353 WAYZATA OFFICE CENTER

5353 WAYZATA BOULEVARD, ST. LOUIS PARK, MN 55416



PROPERTY DESCRIPTION

- Southwest quadrant of Highways 100/I-394 and adjacent to The Shops at West End
- Sheltered Bus Stop On-Site
- Park N' Ride
- Foodsby - food delivery service for the building
- Convenient lodging for your out of town clients and consultants; Hilton Homewood Suites next door
- Associated Bank is anchor tenant
- Web link: <https://buildout.com/website/5353Wayzata-lease>

AREA AMENITIES include over twelve restaurants within walking distance including CRAVE; The Local; The Loop; Raku Sushi & Lounge; Rojo Mexican Grill; Yard house; Jimmy John's; and more Four Hotels: SpringHill Suites, DoubleTree; TownHill Suites and Hilton Homewood Cub Foods/Liquor adjacent to property. Showplace Icon Theatres Costco; Anthropologie; Evereve; Roosters, solidcore and more...

PROPERTY HIGHLIGHTS

- Suite 201 - 991 SF
- Suite 302 - 2,088 SF
- Suite 308 - 3,077 SF (can be combined)
- Suite 310 - 1,627 SF (can be combined)
- Suite 350 - 4,035 SF (can be subdivided and/or combined)
- Suite 600 - 4,074 SF

OFFERING SUMMARY

Lease Rate:	\$14.00 - 16.00 SF/yr (NNN)
Available SF:	991 - 4,074 SF
2024 Tax and Ops:	\$14.39 SF
Building Size:	112,304 SF
Year Built:	1979

BARRY BIRNBERG

952.820.1673

barry.birnberg@northcocommercial.com

The information above has been obtained from services we believe to be reliable, however, we accept no responsibility for its correctness.

5353 WAYZATA OFFICE CENTER

5353 WAYZATA BOULEVARD, ST. LOUIS PARK, MN 55416



BARRY BIRNBERG

952.820.1673

barry.birnberg@northcocommercial.com

The information above has been obtained from services we believe to be reliable, however, we accept no responsibility for its correctness.

5353 WAYZATA OFFICE CENTER

5353 WAYZATA BOULEVARD, ST. LOUIS PARK, MN 55416



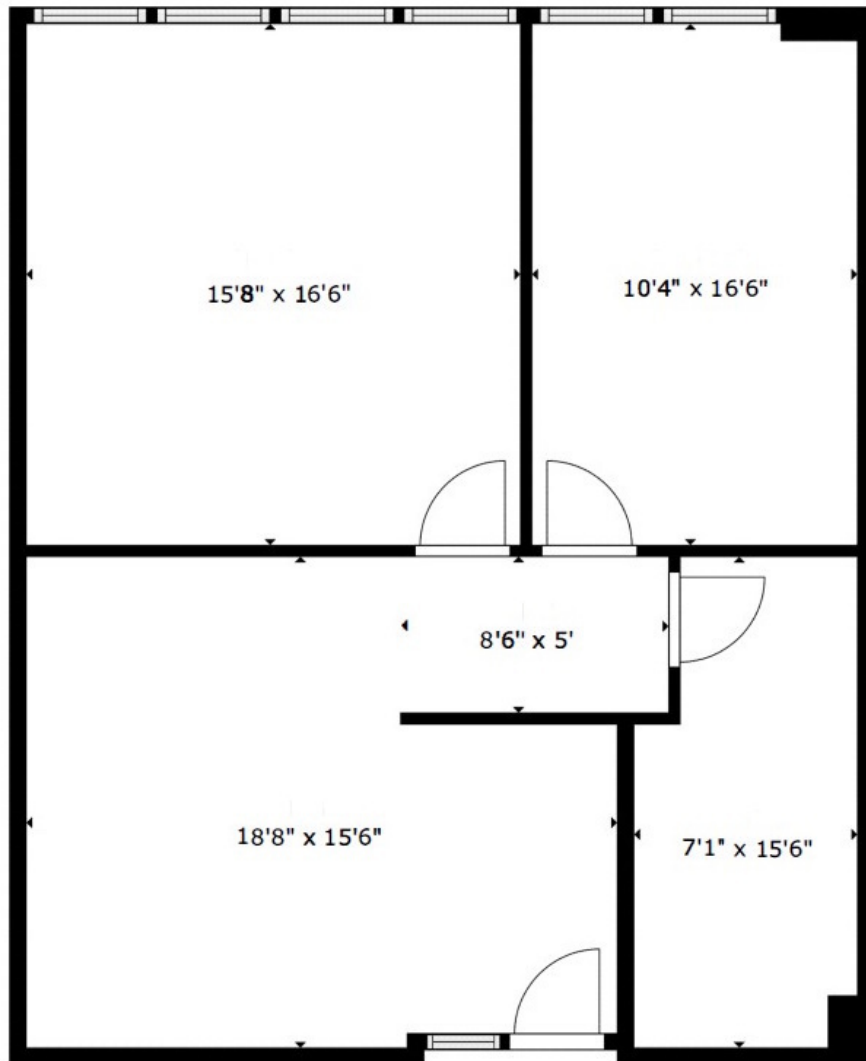
BARRY BIRNBERG

952.820.1673

barry.birnberg@northcocommercial.com

The information above has been obtained from services we believe to be reliable, however, we accept no responsibility for its correctness.

5353 WAYZATA OFFICE CENTER 5353 WAYZATA BOULEVARD, ST. LOUIS PARK, MN 55416



Suite 201
991 SF

SIZES AND DIMENSIONS ARE APPROXIMATE, ACTUAL MAY VARY.

(NOT TO SCALE)



 **Matterport**

BARRY BIRNBERG

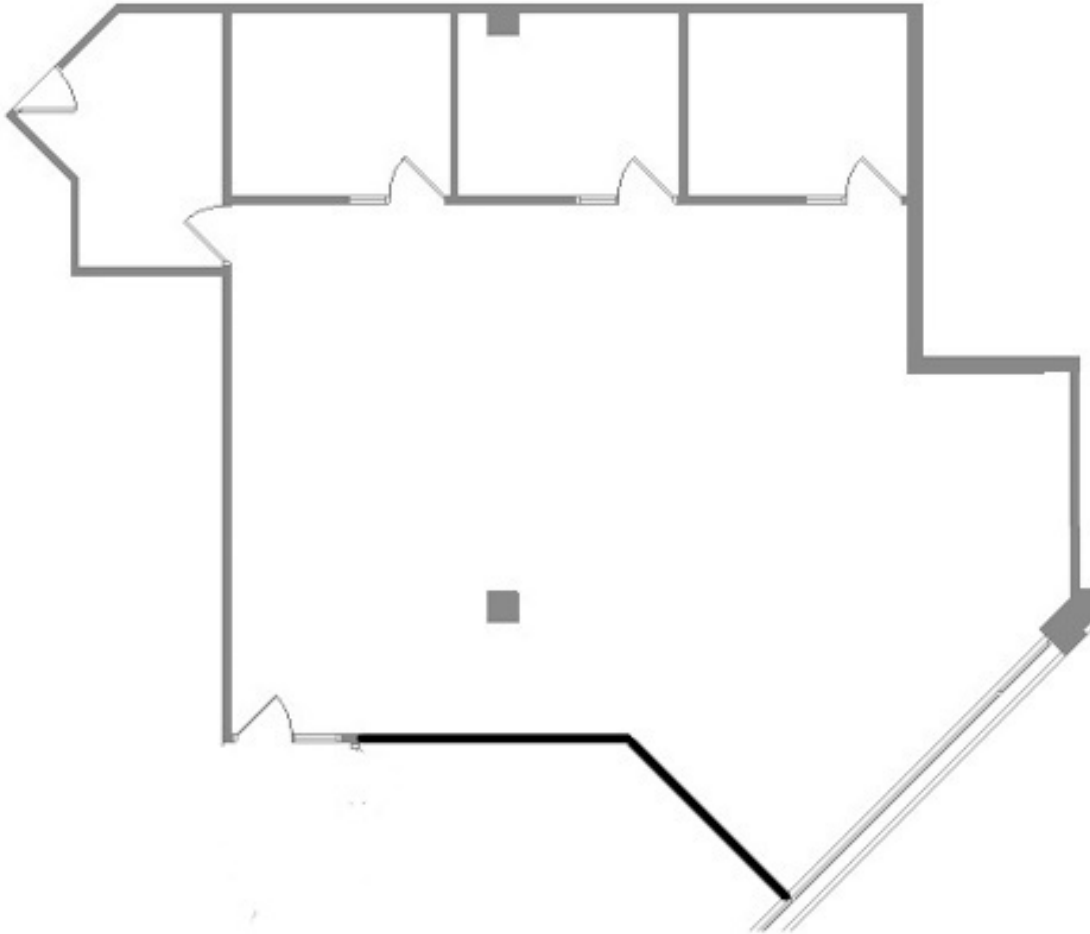
952.820.1673

barry.birnberg@northcocommercial.com

SUITE 201 - 991 SF

The information above has been obtained from services we believe to be reliable, however, we accept no responsibility for its correctness.

5353 WAYZATA OFFICE CENTER
5353 WAYZATA BOULEVARD, ST. LOUIS PARK, MN 55416



Suite 302
2,088 SF



(NOT TO SCALE)

BARRY BIRNBERG

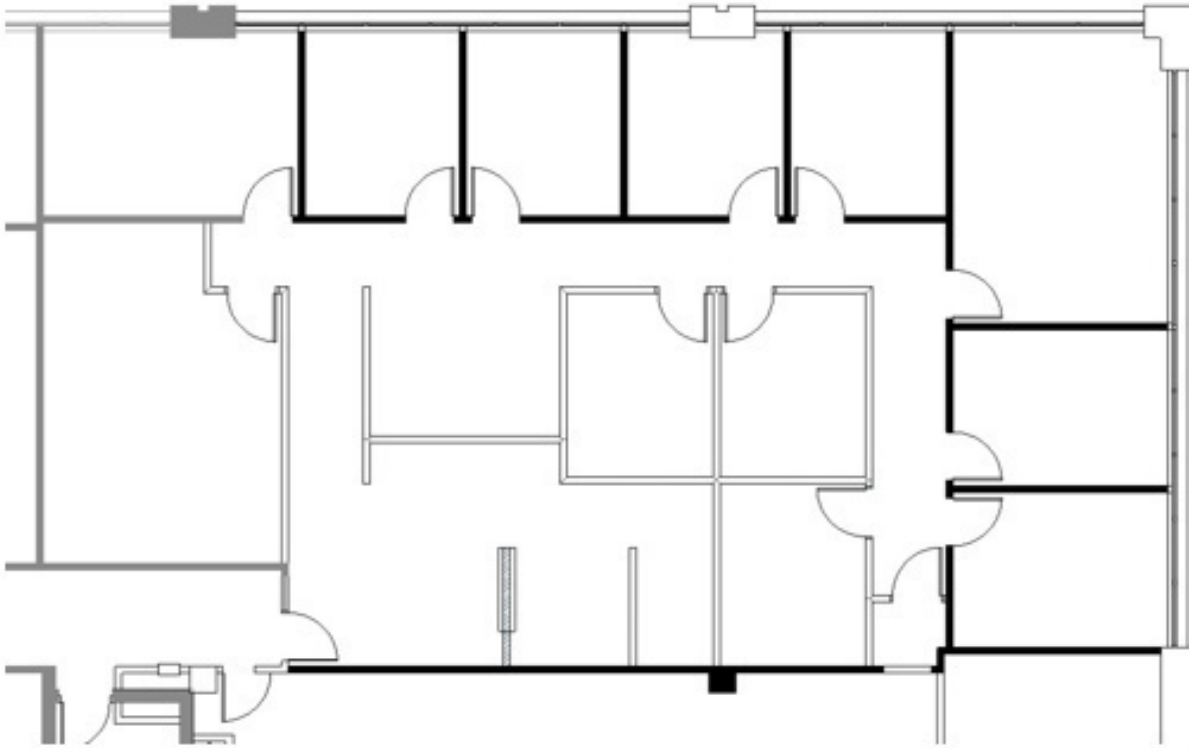
952.820.1673

barry.birnberg@northcocommercial.com

SUITE 302 - 2,088 SF

The information above has been obtained from services we believe to be reliable, however, we accept no responsibility for its correctness.

5353 WAYZATA OFFICE CENTER
5353 WAYZATA BOULEVARD, ST. LOUIS PARK, MN 55416



Suite 308
3,077 SF



(NOT TO SCALE)

BARRY BIRNBERG

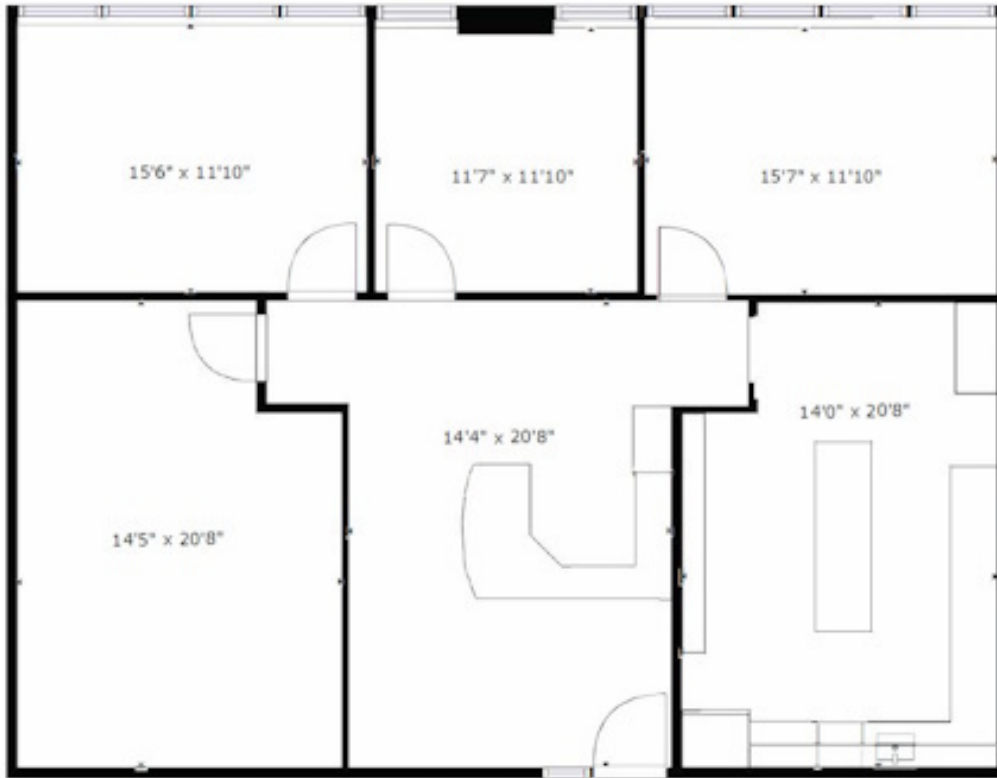
952.820.1673

barry.birnberg@northcocommercial.com

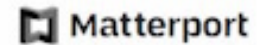
SUITE 308 - 3,088 SF

The information above has been obtained from services we believe to be reliable, however, we accept no responsibility for its correctness.

5353 WAYZATA OFFICE CENTER
5353 WAYZATA BOULEVARD, ST. LOUIS PARK, MN 55416



SILOS AND DIMENSIONS ARE APPROXIMATE, ACTUAL MAY VARY



Suite 310
1,627 SF

(NOT TO SCALE)

BARRY BIRNBERG

952.820.1673

barry.birnberg@northcocommercial.com

SUITE 310 - 1,627 SF

The information above has been obtained from services we believe to be reliable, however, we accept no responsibility for its correctness.

5353 WAYZATA OFFICE CENTER

5353 WAYZATA BOULEVARD, ST. LOUIS PARK, MN 55416



SIZES AND DIMENSIONS ARE APPROXIMATE, ACTUAL MAY VARY.

Suite 350
4,035 RSF



KEY PLAN
LEVEL THREE

(NOT TO SCALE)

1 FLOOR PLAN NAME

Floor Plan Information

BARRY BIRNBERG

952.820.1673

barry.birnberg@northcocommercial.com

SUITE 350 - 4,035 SF

The information above has been obtained from services we believe to be reliable, however, we accept no responsibility for its correctness.

5353 WAYZATA OFFICE CENTER

5353 WAYZATA BOULEVARD, ST. LOUIS PARK, MN 55416



5353 Wayzata Blvd, Suite 600
4,074 RSF

Dimensions are approximate

Suite 600
4,074 SF



BARRY BIRNBERG

952.820.1673

barry.birnberg@northcocommercial.com

SUITE 600 - 4,074 SF

The information above has been obtained from services we believe to be reliable, however, we accept no responsibility for its correctness.