

# PUYALLUP EXECUTIVE PARK (1011)

1011 E Main, Puyallup, WA 98372



## SUMMARY INFORMATION

### Available SF:

**Lease Rate:** N/A

**Lot Size:** 1.45 Acres

**Year Built:** 1989

**Building Size:** 46,775

**Renovated:** 1998

**Zoning:** CB

**Market:** Puyallup

## PROPERTY OVERVIEW

Class A office building in downtown Puyallup. Quality constructed building offers many amenities, including locker room and showers, immediate occupancy and on-site property management.

## PROPERTY HIGHLIGHTS

- 2 Elevators
- On Site Cafe
- Riverwalk Trail Access
- Easy Access to freeways
- Beautiful Views of Mt. Rainier and the River
- Outside deck access from some suites

**KELLER WILLIAMS COMMERCIAL**  
1011 East Main,  
Suite 208  
Puyallup, WA 98372

**RICK BROWN**  
Commercial Broker  
253.840.5574  
rickbrown@kw.com

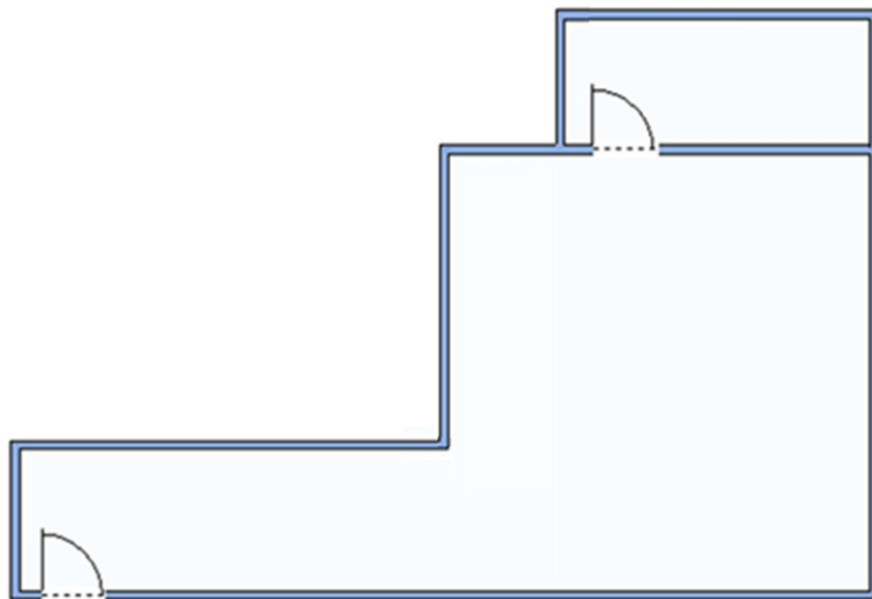
**JONATHAN HARPER**  
Director Of Sales And Leasing  
253.840.5574  
jonathanharper@kw.com  
WA #90048

We obtained the information above from sources we believe to be reliable. However, we have not verified its accuracy and make no guarantee, warranty or representation about it. It is submitted subject to the possibility of errors, omissions, change of price, rental or other conditions, prior sale, lease or financing, or withdrawal without notice. We include projections, opinions, assumptions or estimates for example only, and they may not represent current or future performance of the property. You and your tax and legal advisors should conduct your own investigation of the property and transaction.

<https://kwcpuyallup.com/>

# PUYALLUP EXECUTIVE PARK (1011)

1011 E Main, Puyallup, WA 98372



## LEASE INFORMATION

Lease Type:	-	Lease Term:	Negotiable
Total Space:	-	Lease Rate:	N/A

## AVAILABLE SPACES

SUITE	SIZE (SF)	LEASE TYPE	LEASE RATE	DESCRIPTION
Suite 302	550 SF	NNN	\$18.03 SF/yr	Sublease til 2/28/24 Standard Lease option after sublease ends

**KELLER WILLIAMS COMMERCIAL**  
1011 East Main,  
Suite 208  
Puyallup, WA 98372

**RICK BROWN**  
Commercial Broker  
253.840.5574  
rickbrown@kw.com

**JONATHAN HARPER**  
Director Of Sales And Leasing  
253.840.5574  
jonathanharper@kw.com  
WA #90048

We obtained the information above from sources we believe to be reliable. However, we have not verified its accuracy and make no guarantee, warranty or representation about it. It is submitted subject to the possibility of errors, omissions, change of price, rental or other conditions, prior sale, lease or financing, or withdrawal without notice. We include projections, opinions, assumptions or estimates for example only, and they may not represent current or future performance of the property. You and your tax and legal advisors should conduct your own investigation of the property and transaction.

<https://kwcpuyallup.com/>

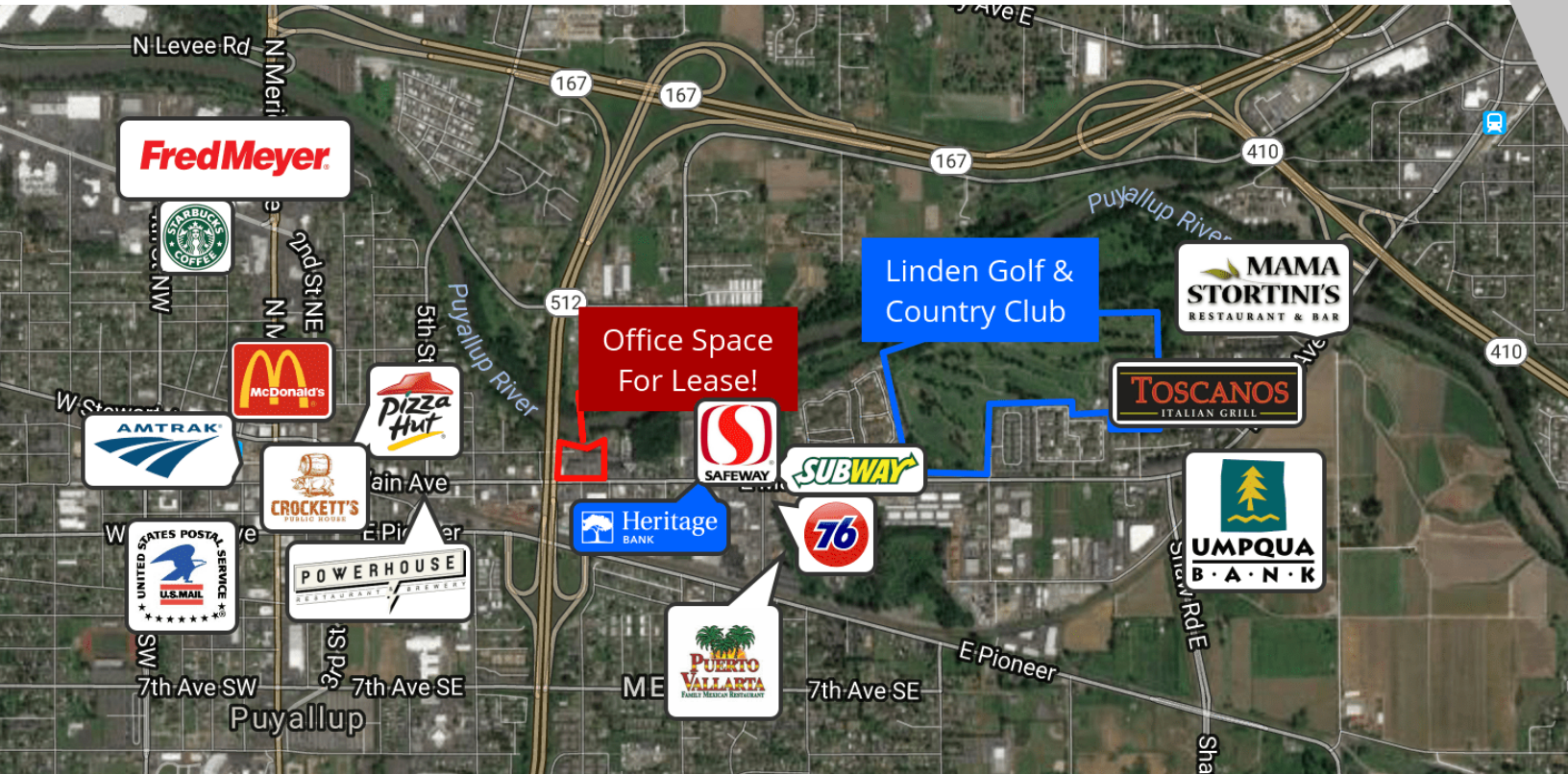


OFFICE FOR LEASE



# PUYALLUP EXECUTIVE PARK (1011)

1011 E Main, Puyallup, WA 98372



## LOCATION OVERVIEW

Located in Puyallup's premium business neighborhood. Walking distance to restaurants and shops. Close to freeway access, transit and services.



**KELLER WILLIAMS COMMERCIAL**  
1011 East Main,  
Suite 208  
Puyallup, WA 98372

**RICK BROWN**  
Commercial Broker  
253.840.5574  
rickbrown@kw.com

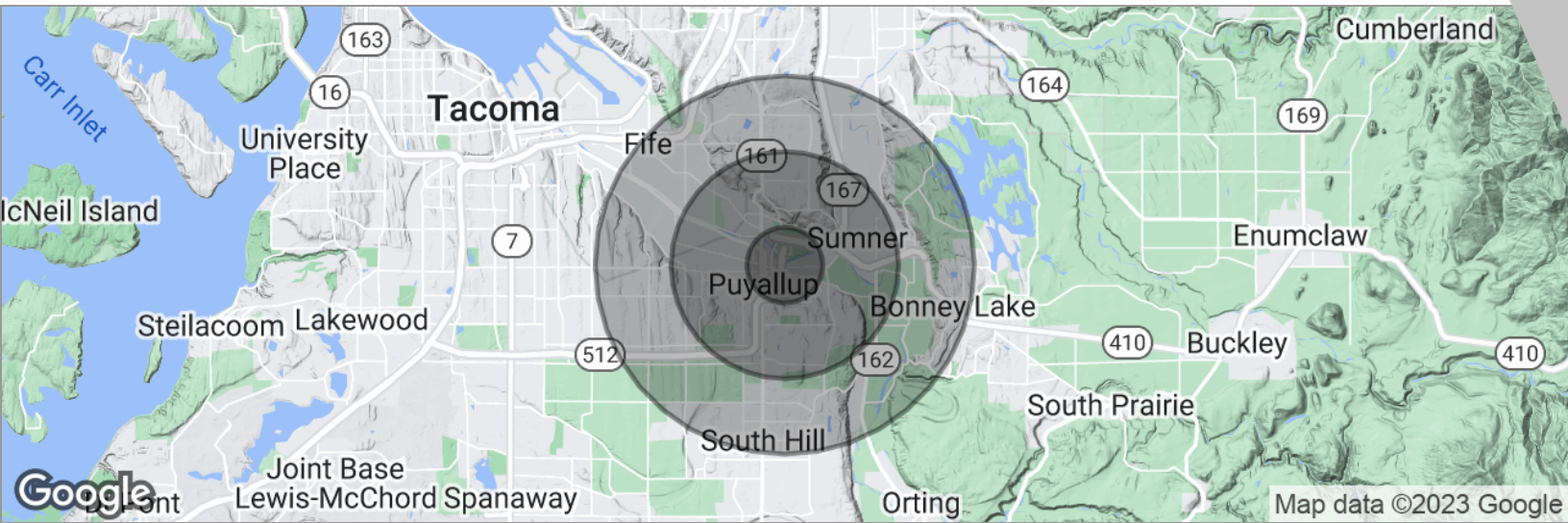
**JONATHAN HARPER**  
Director Of Sales And Leasing  
253.840.5574  
jonathanharper@kw.com  
WA #90048

We obtained the information above from sources we believe to be reliable. However, we have not verified its accuracy and make no guarantee, warranty or representation about it. It is submitted subject to the possibility of errors, omissions, change of price, rental or other conditions, prior sale, lease or financing, or withdrawal without notice. We include projections, opinions, assumptions or estimates for example only, and they may not represent current or future performance of the property. You and your tax and legal advisors should conduct your own investigation of the property and transaction.

<https://kwcpuyallup.com/>

# PUYALLUP EXECUTIVE PARK (1011)

1011 E Main, Puyallup, WA 98372



POPULATION	1 MILE	3 MILES	5 MILES
Total population	7,391	62,732	150,135
Median age	35.9	36.4	36.3
Median age (male)	34.3	35.3	35.5
Median age (Female)	37.3	37.3	36.8
HOUSEHOLDS & INCOME	1 MILE	3 MILES	5 MILES
Total households	3,101	24,817	59,158
# of persons per HH	2.4	2.5	2.5
Average HH income	\$61,158	\$70,845	\$71,907
Average house value	\$237,615	\$332,442	\$332,518

\* Demographic data derived from 2020 ACS - US Census

**KELLER WILLIAMS COMMERCIAL**  
1011 East Main,  
Suite 208  
Puyallup, WA 98372

**RICK BROWN**  
Commercial Broker  
253.840.5574  
rickbrown@kw.com

**JONATHAN HARPER**  
Director Of Sales And Leasing  
253.840.5574  
jonathanharper@kw.com  
WA #90048

We obtained the information above from sources we believe to be reliable. However, we have not verified its accuracy and make no guarantee, warranty or representation about it. It is submitted subject to the possibility of errors, omissions, change of price, rental or other conditions, prior sale, lease or financing, or withdrawal without notice. We include projections, opinions, assumptions or estimates for example only, and they may not represent current or future performance of the property. You and your tax and legal advisors should conduct your own investigation of the property and transaction.

<https://kwcpuyallup.com/>