



OFFICE BUILDING FOR LEASE

2010 W Eau Gallie Blvd #105

2010 W Eau Gallie Blvd #105 Melbourne, FL 32935

UP TO 1,500 SF OF OFFICE SPACE

presented by:

ROB BECKNER, SIOR

Principal

321.722.0707 X11

rob@teamlbr.com

EXECUTIVE SUMMARY

• 2010 W Eau Gallie Blvd #105 Melbourne, FL 32935



OFFERING SUMMARY

Available SF: 1,500 SF

Lease Rate: \$16.00 SF/yr (Gross)

Building Size: 1,500 SF

PROPERTY OVERVIEW

Office Shell
Build-out allowance to qualified tenants with 5-year lease
+/- 1500 SF

LOCATION OVERVIEW

Located directly on Eau Gallie Blvd near Croton Rd Intersection.
Close to both US 1 & a straight shot from I-95

ROB BECKNER, SIOR

Principal
321.722.0707 X11
rob@teamlbr.com

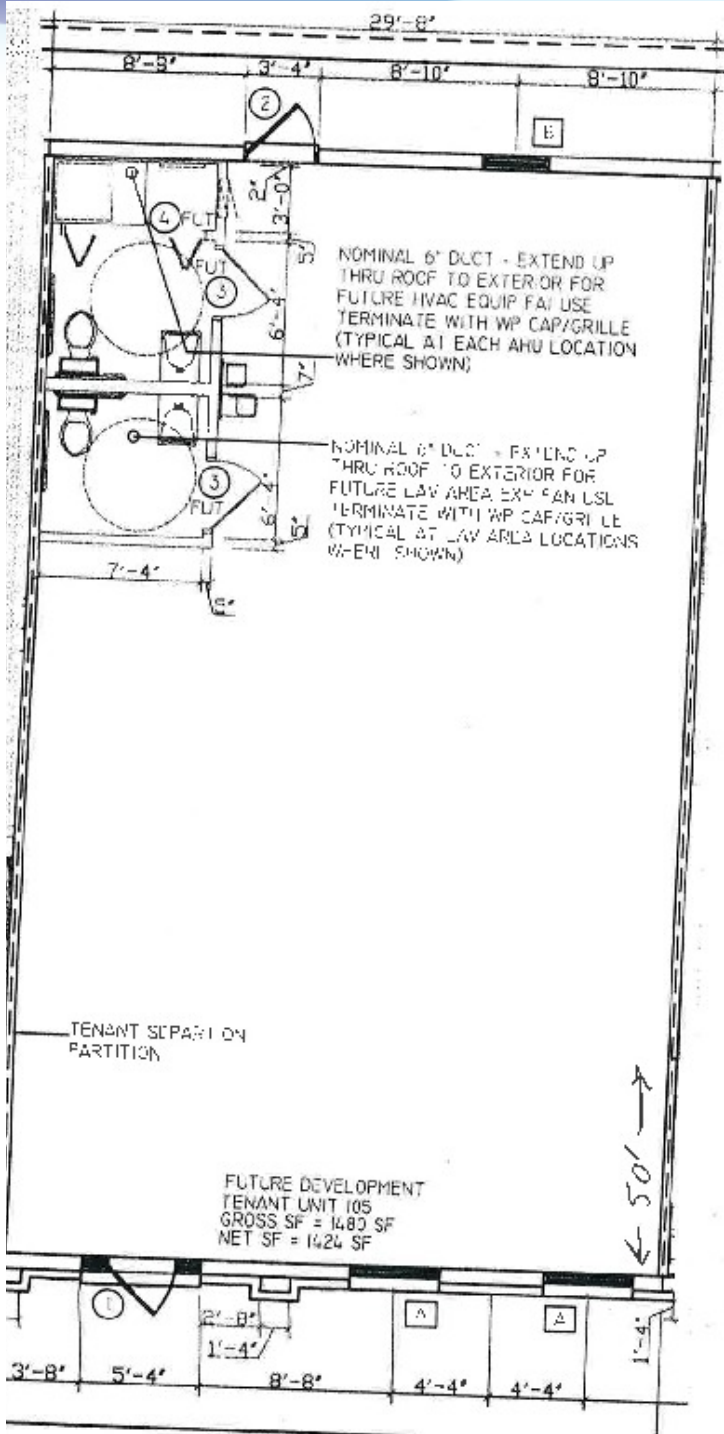
Lightle Beckner Robison, Inc.

321.722.0707 • teamlbr.com
70 W. Hibiscus Blvd.,
Melbourne, FL 32901

Information contained herein has been obtained through sources deemed reliable but cannot be guaranteed as to its accuracy. A purchaser or lessee is expected to verify all information to his/her own satisfaction. Zoning information subject to change and not warranted. Always confirm current requirements with local governing agencies.

ADDITIONAL PHOTOS

• 2010 W Eau Gallie Blvd #105 Melbourne, FL 32935



ROB BECKNER, SIOR

Principal
321.722.0707 X11
rob@teamlbr.com

Lightle Beckner Robison, Inc.

321.722.0707 • teamlbr.com
70 W. Hibiscus Blvd.,
Melbourne, FL 32901

Information contained herein has been obtained through sources deemed reliable but cannot be guaranteed as to its accuracy. A purchaser or lessee is expected to verify all information to his/her own satisfaction. Zoning information subject to change and not warranted. Always confirm current requirements with local governing agencies.

LOCATION MAPS

• 2010 W Eau Gallie Blvd #105 Melbourne, FL 32935



ROB BECKNER, SIOR

Principal
321.722.0707 X11
rob@teamlbr.com

Lightle Beckner Robison, Inc.

321.722.0707 • teamlbr.com
70 W. Hibiscus Blvd.,
Melbourne, FL 32901

Information contained herein has been obtained through sources deemed reliable but cannot be guaranteed as to its accuracy. A purchaser or lessee is expected to verify all information to his/her own satisfaction. Zoning information subject to change and not warranted. Always confirm current requirements with local governing agencies.