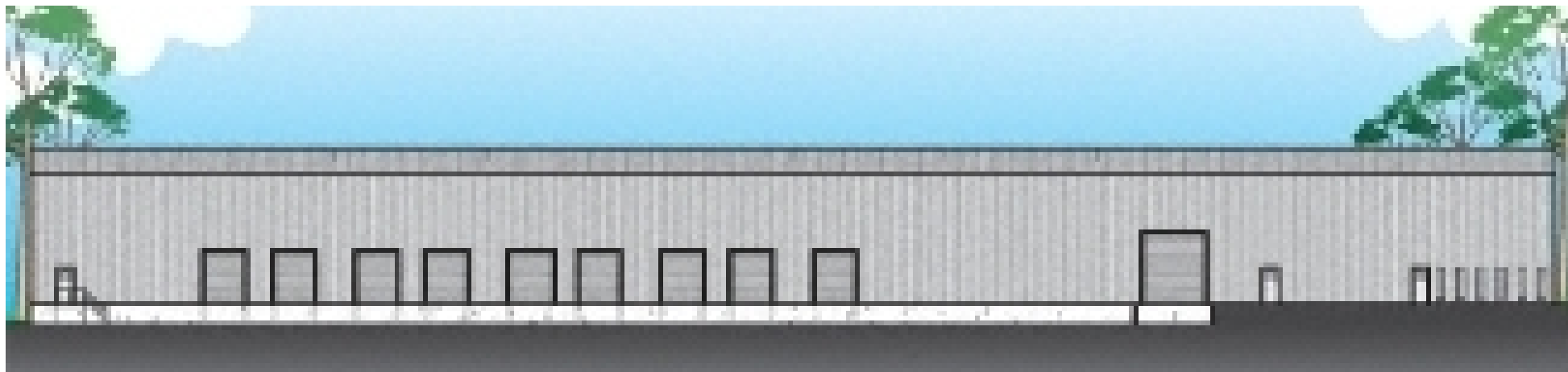


2041 Forward Augusta Dr

Augusta, GA 30906



OFFERING SUMMARY

Available SF: 50,000 - 300,000 SF

Lease Rate: \$6.00 - 6.50 SF/yr
(NNN)

Lot Size: 18.28 Acres

Building Size: 300,000

Submarket: South Richmond
County

PROPERTY OVERVIEW

Forward Augusta is one of the finest Industrial parks in Augusta, Georgia. Every tract in the park has full utilities, curb and gutter and street lights. The property is zoned for Heavy Industry and has rail access. These lots are sub dividable.

This property is on Forward Augusta Drive and is located in Forward Augusta Industrial Park. Forward Augusta is located near the intersection of HWY 56 and Tobacco Road near the Augusta Airport. This property is also conveniently near I-520

PROPERTY HIGHLIGHTS

- Rail access
- Located near I-520 and the Augusta Airport
-

SHERMAN & HEMSTREET REAL ESTATE COMPANY

4316 Washington Road, Evans, GA 30809
shermanandhemstreet.com
706.722.8334

CHARLES HOCK, SIOR, CCIM

charleswhock@aol.com
706.722.8334

2041 Forward Augusta Dr

Augusta, GA 30906



SHERMAN & HEMSTREET REAL ESTATE COMPANY

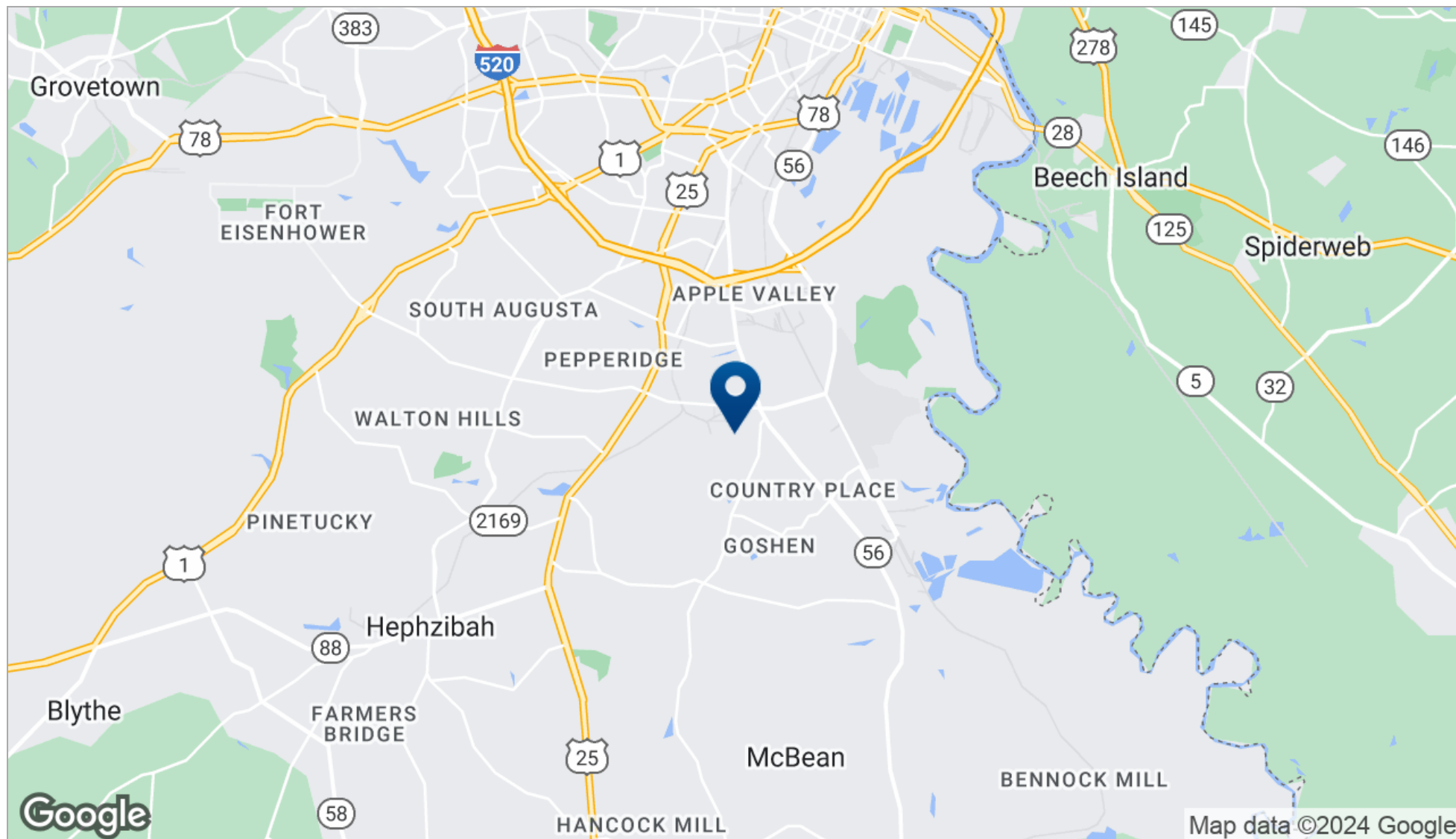
4316 Washington Road, Evans, GA 30809
shermanandhemstreet.com
706.722.8334

CHARLES HOCK, SIOR, CCIM

charleswhock@aol.com
706.722.8334

2041 Forward Augusta Dr

Augusta, GA 30906



SHERMAN & HEMSTREET REAL ESTATE COMPANY

4316 Washington Road, Evans, GA 30809
shermanandhemstreet.com
706.722.8334

CHARLES HOCK, SIOR, CCIM

charleswhock@aol.com
706.722.8334