

1000 W ELM AVE, WASECA, MN 56093

WASECA - LTD OFFICE BUILDING



1000 W ELM AVE, WASECA, MN 56093

WASECA - LTD OFFICE BUILDING

Property Description

Located on the main thoroughfare through Waseca, this well built office building is on Loon Lake. This tranquil setting offers great views of the lake and wildlife. Great visibility from Elm Ave. and professional image both inside and out. Paved paths and parking lot for clients and employees. This is an attractive opportunity for any well established office user seeking versatility in a space.

Property Highlights

- Tranquil location on Loon Lake
- Profession image inside and out
- Ample paved parking lot

**David Schooff CCIM SIOR**

507.625.0985

david@cbcfishergroup.com

www.cbcworldwide.com
**COLDWELL BANKER COMMERCIAL**

FISHER GROUP

1961 PREMIER DRIVE SUITE 404

MANKATO, MN 56001

507-625-4715

1000 W ELM AVE, WASECA, MN 56093

WASECA - LTD OFFICE BUILDING



OFFERING SUMMARY

Available SF: 4,000 - 8,000 SF

Lease Rate: \$4.00 - 7.00 SF/yr (NNN)

Lot Size: 1.9 Acres

Year Built: 1968

Building Size: 32,706 SF

Zoning: Office Transition

AVAILABLE SPACES

SPACE	LEASE RATE	LEASE TYPE	SIZE (SF)	CAM/SF
-------	------------	------------	-----------	--------

DEMOGRAPHICS

	5 MILES	10 MILES	15 MILES
Total Households	6,385	8,258	12,661
Total Population	16,730	21,752	33,089
Average HH Income	\$55,405	\$58,404	\$61,305

**David Schooff CCIM SIOR**

507.625.0985

david@cbcfishergroup.com

1000 W ELM AVE, WASECA, MN 56093

WASECA - LTD OFFICE BUILDING



David Schooff CCIM SIOR

507.625.0985

david@cbcfishergroup.com

1000 W ELM AVE, WASECA, MN 56093

WASECA - LTD OFFICE BUILDING



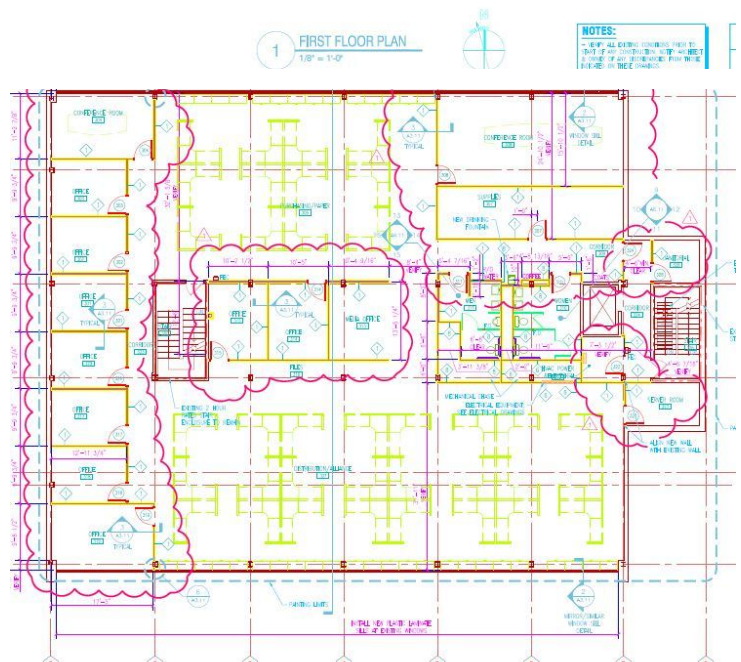
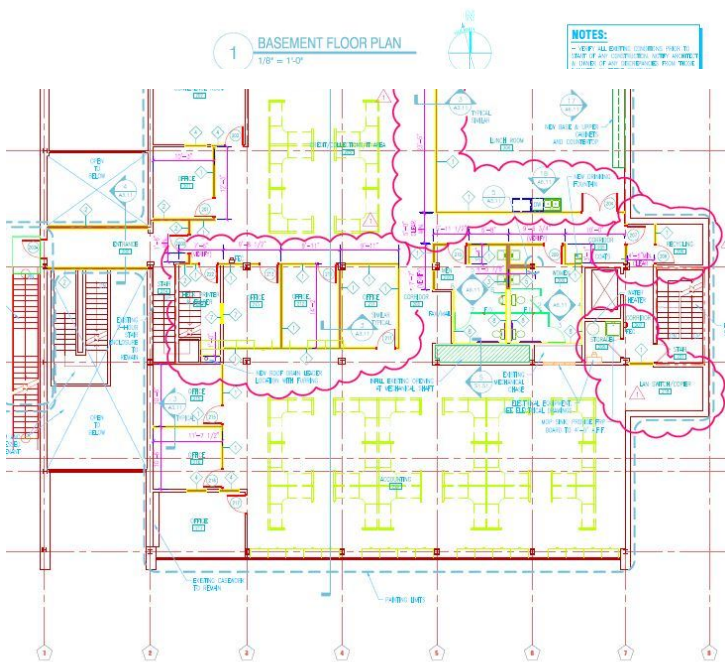
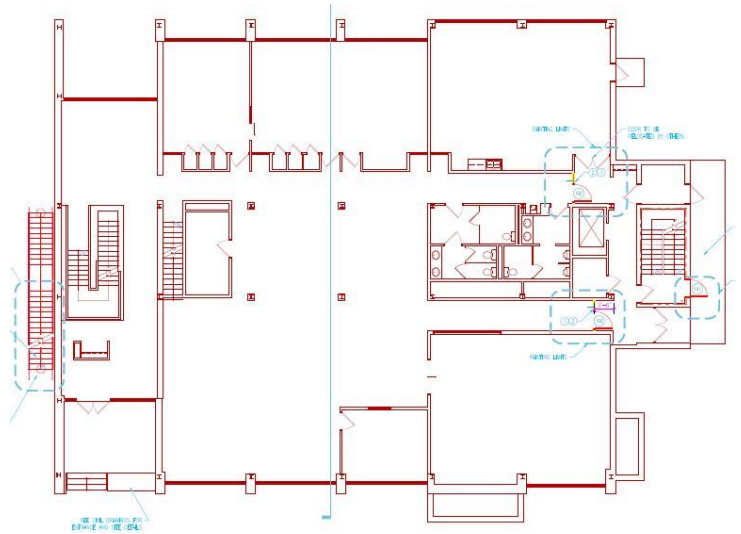
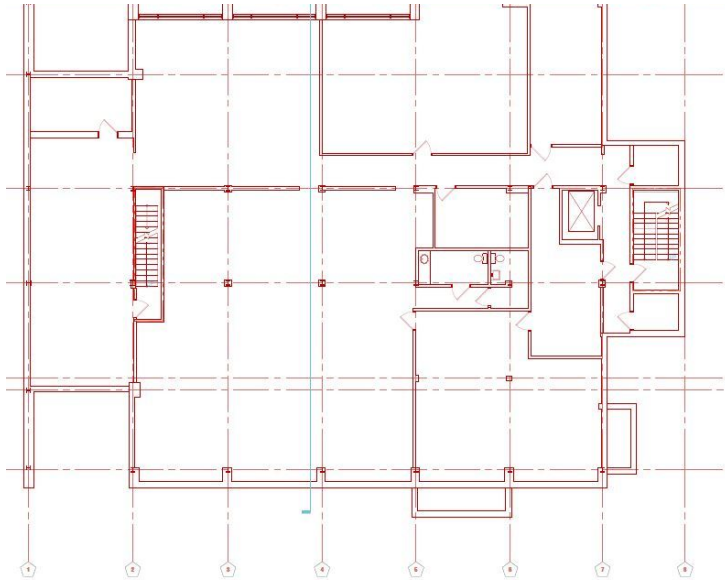
David Schooff CCIM SIOR

507.625.0985

david@cbcfishergroup.com

1000 W ELM AVE, WASECA, MN 56093

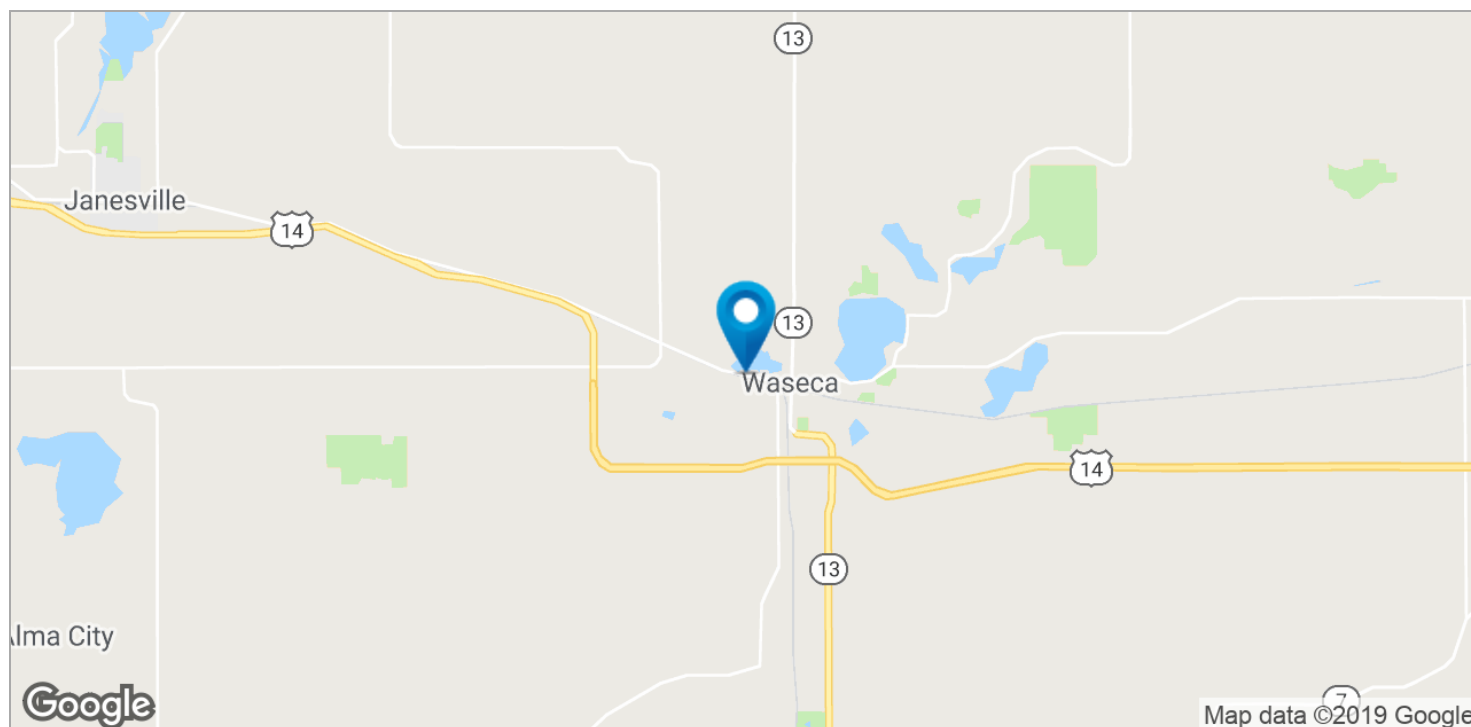
WASECA - LTD OFFICE BUILDING



David Schooff CCIM SIOR
507.625.0985
david@cbcfishergroup.com

1000 W ELM AVE, WASECA, MN 56093

WASECA - LTD OFFICE BUILDING



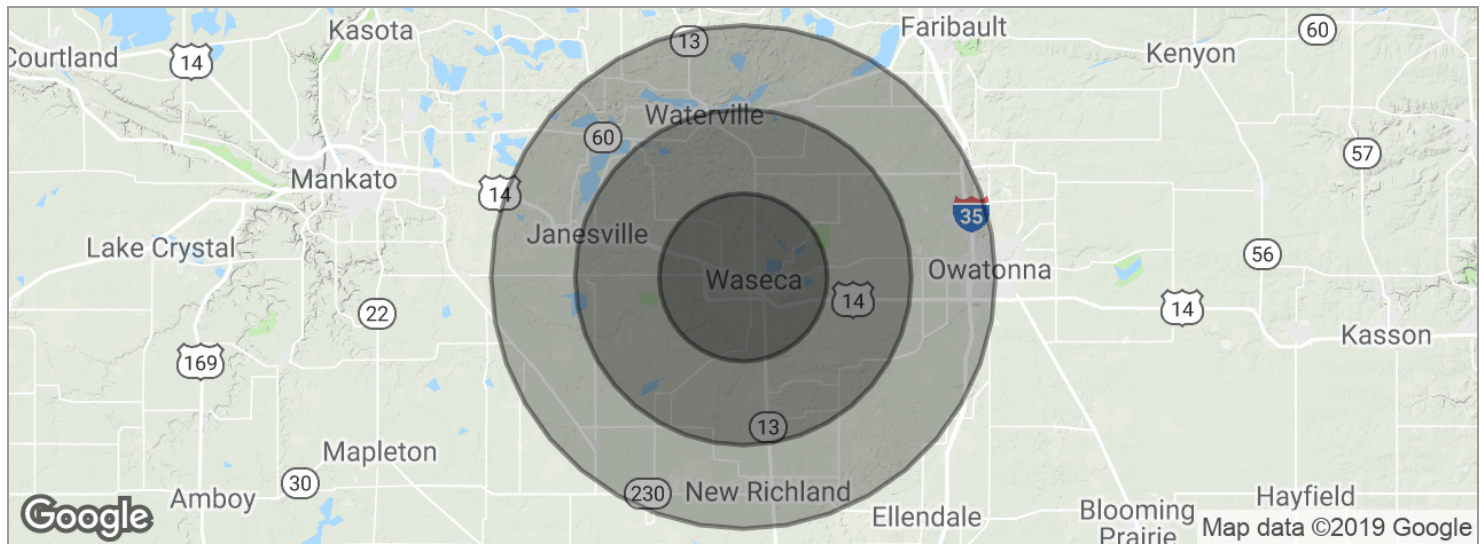
David Schooff CCIM SIOR

507.625.0985

david@cbcfishergroup.com

1000 W ELM AVE, WASECA, MN 56093

WASECA - LTD OFFICE BUILDING



POPULATION	5 MILES	10 MILES	15 MILES
Total population	16,730	21,752	33,089
Median age	38.7	39.3	40.3
Median age (male)	38.8	39.1	39.9
Median age (Female)	38.1	39.2	40.6
HOUSEHOLDS & INCOME	5 MILES	10 MILES	15 MILES
Total households	6,385	8,258	12,661
# of persons per HH	2.6	2.6	2.6
Average HH income	\$55,405	\$58,404	\$61,305
Average house value	\$149,039	\$182,673	\$198,709

* Demographic data derived from 2010 US Census

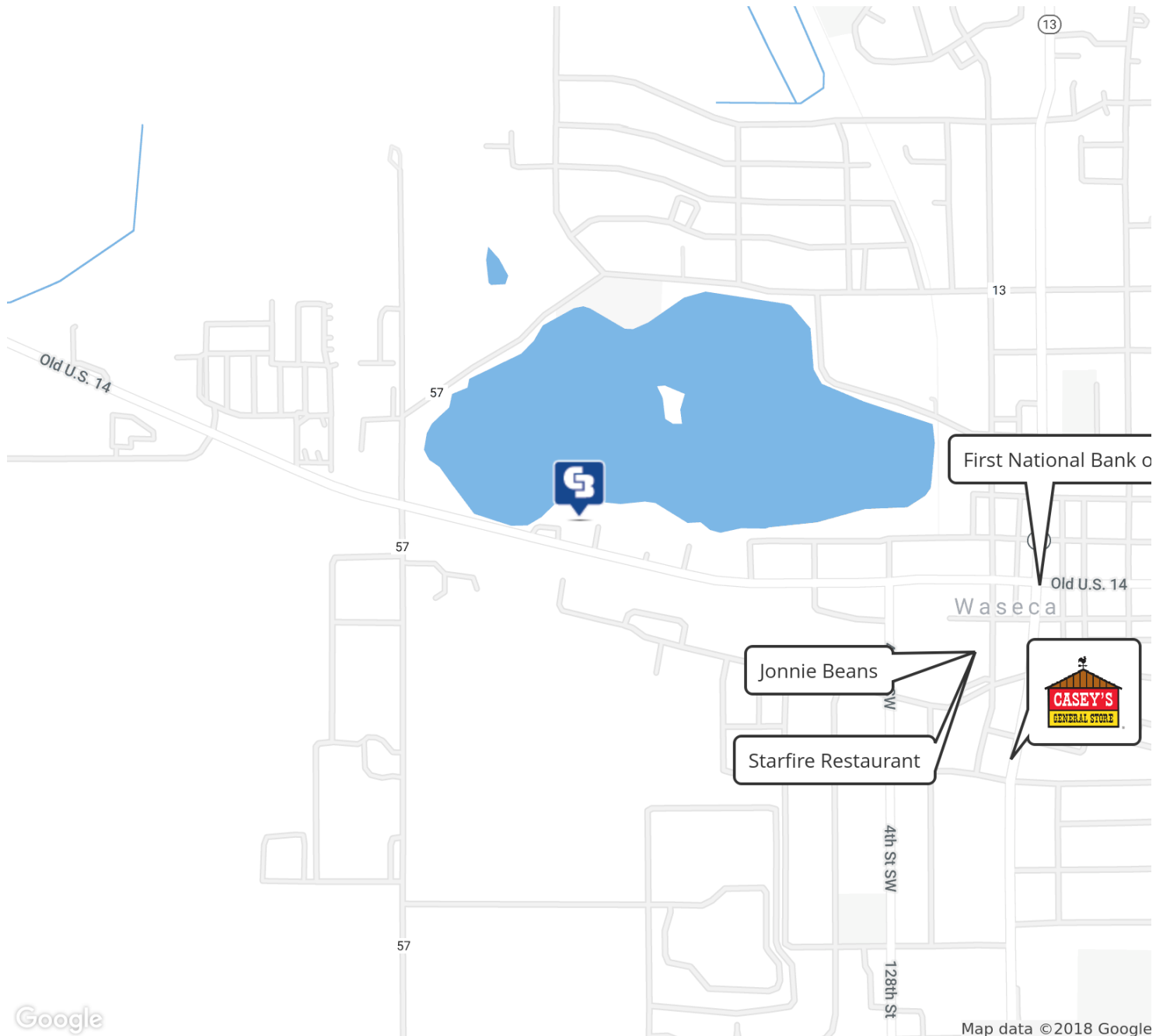
**David Schooff CCIM SIOR**

507.625.0985

david@cbcfishergroup.com

1000 W ELM AVE, WASECA, MN 56093

WASECA - LTD OFFICE BUILDING



David Schooff CCIM SIOR

507.625.0985

david@cbcfishergroup.com