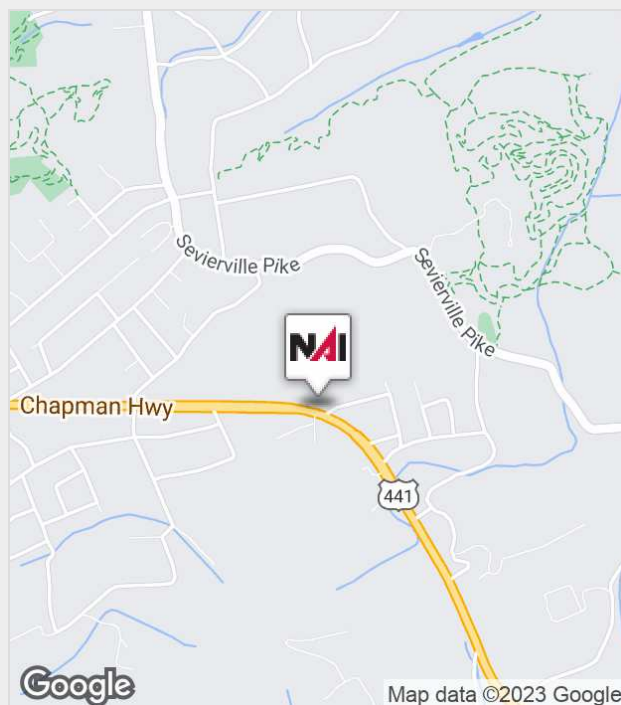


6562 Chapman Hwy

Knoxville, Tennessee 37920

Property Features

- 2 lots offered as a whole on busy Chapman Highway
- Offering 31,000 vehicle trips a day.
- High visibility
- Priced to sell!



For more information:

Michael Moore

+1 865 531 6400 • mmoore@koellamoore.com

NO WARRANTY OR REPRESENTATION, EXPRESS OR IMPLIED, IS MADE AS TO THE ACCURACY OF THE INFORMATION CONTAINED HEREIN, AND THE SAME IS SUBMITTED SUBJECT TO ERRORS, OMISSIONS, CHANGE OF PRICE, RENTAL OR OTHER CONDITIONS, PRIOR SALE, LEASE OR FINANCING, WITHDRAWAL WITHOUT NOTICE, OR ANY SPECIAL LISTING CONDITIONS IMPOSED BY OUR PRINCIPALS. NO WARRANTIES OR REPRESENTATIONS ARE MADE AS TO THE CONDITION OF THE PROPERTY OR ANY HAZARDS CONTAINED THEREIN. UNLESS THERE IS AN AGREEMENT STIPULATING OTHERWISE, THE AFFILIATE BROKERS OR BROKERS NAMED WITHIN REPRESENT THE OWNER OR LANDLORD.

NAI Koella | RM Moore
255 N Peters Road, Suite 101
+1 865 531 6400
www.koellamoore.com

For Sale

High Visibility Chapman Highway Parcel



Property Summary

Sale Price:	\$100,000
Lot Size:	0.87 Acres
APN #:	124ID008 & 124ID007
Zoning:	C-3
Market:	Knoxville
Sub Market:	Seymour

Property Overview

2 parcels totaling .87 acres with C-3 zoning providing a multitude of use options. A small billboard provides income of approximately \$158.00/month and could remain or be removed.

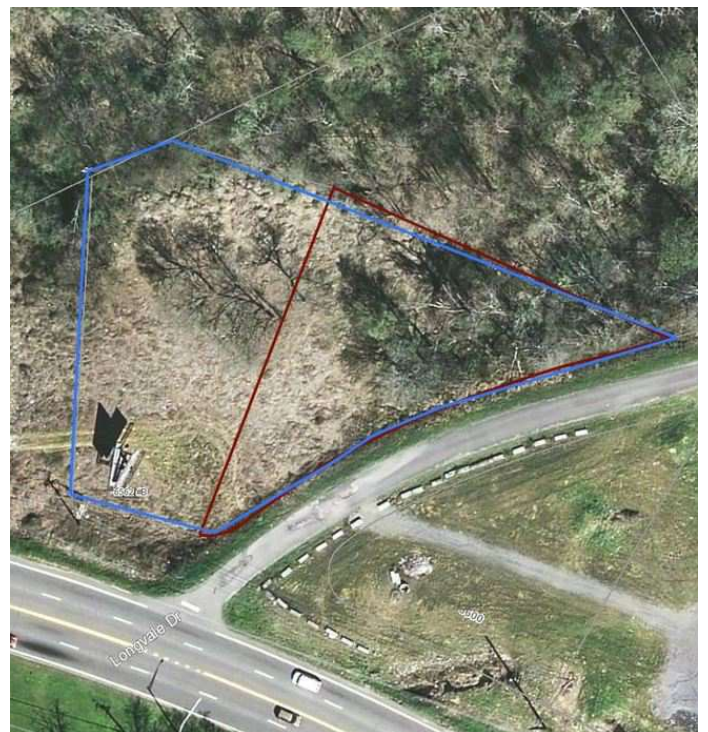
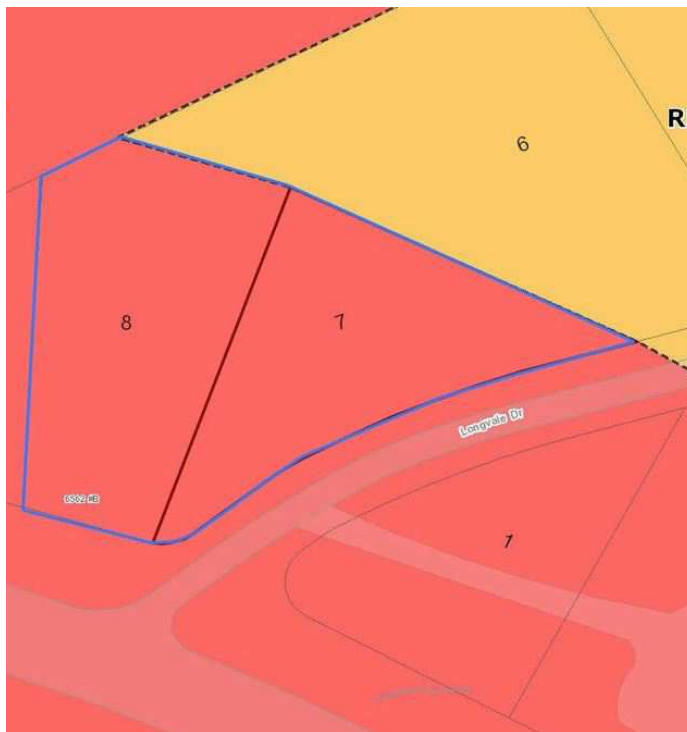
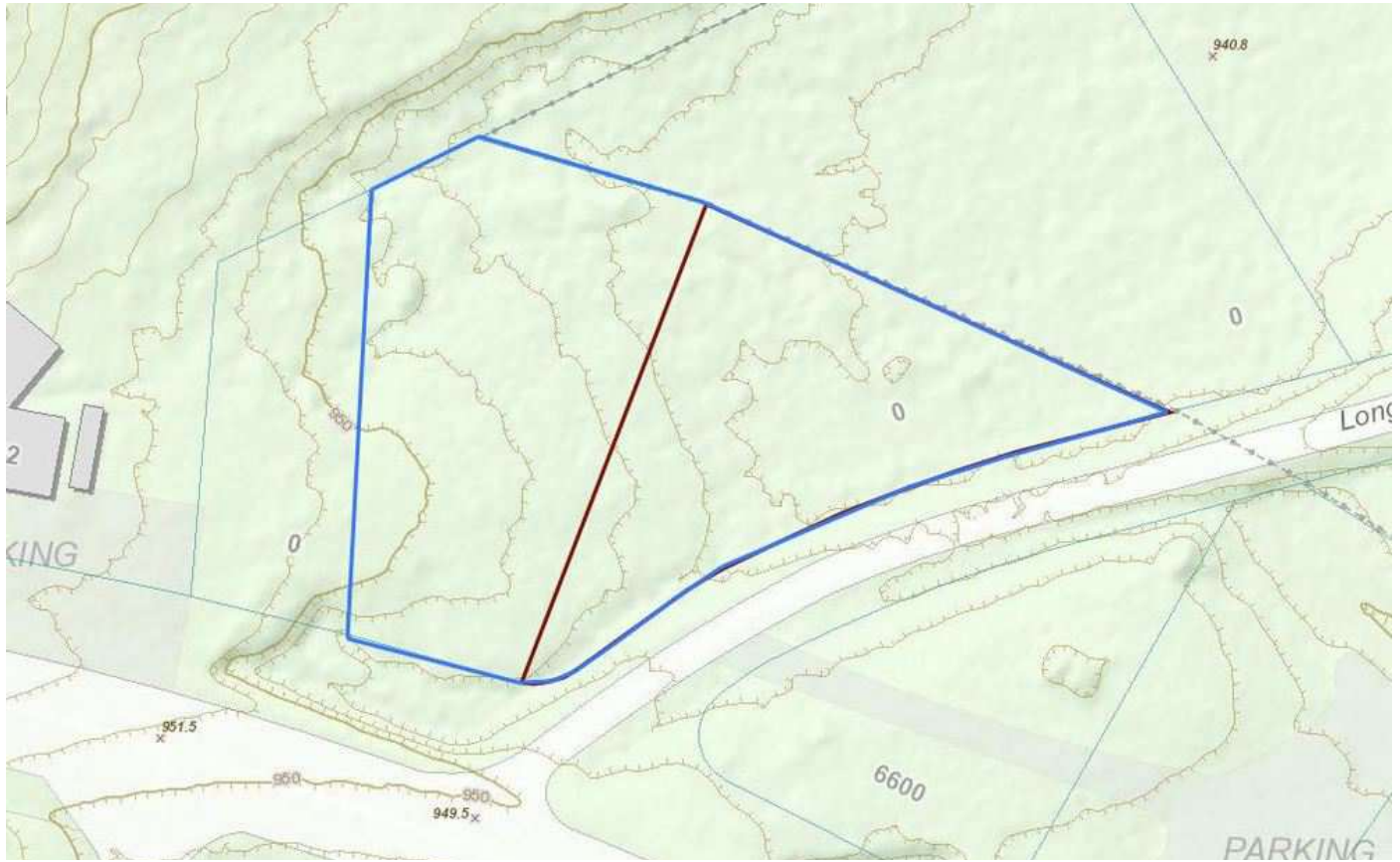
Excellent visibility on busy Chapman Highway and priced to sell further highlight this parcel.

Location Overview

A vacant lot with good visibility on busy Chapman Highway (31,000 cars a day +/-).

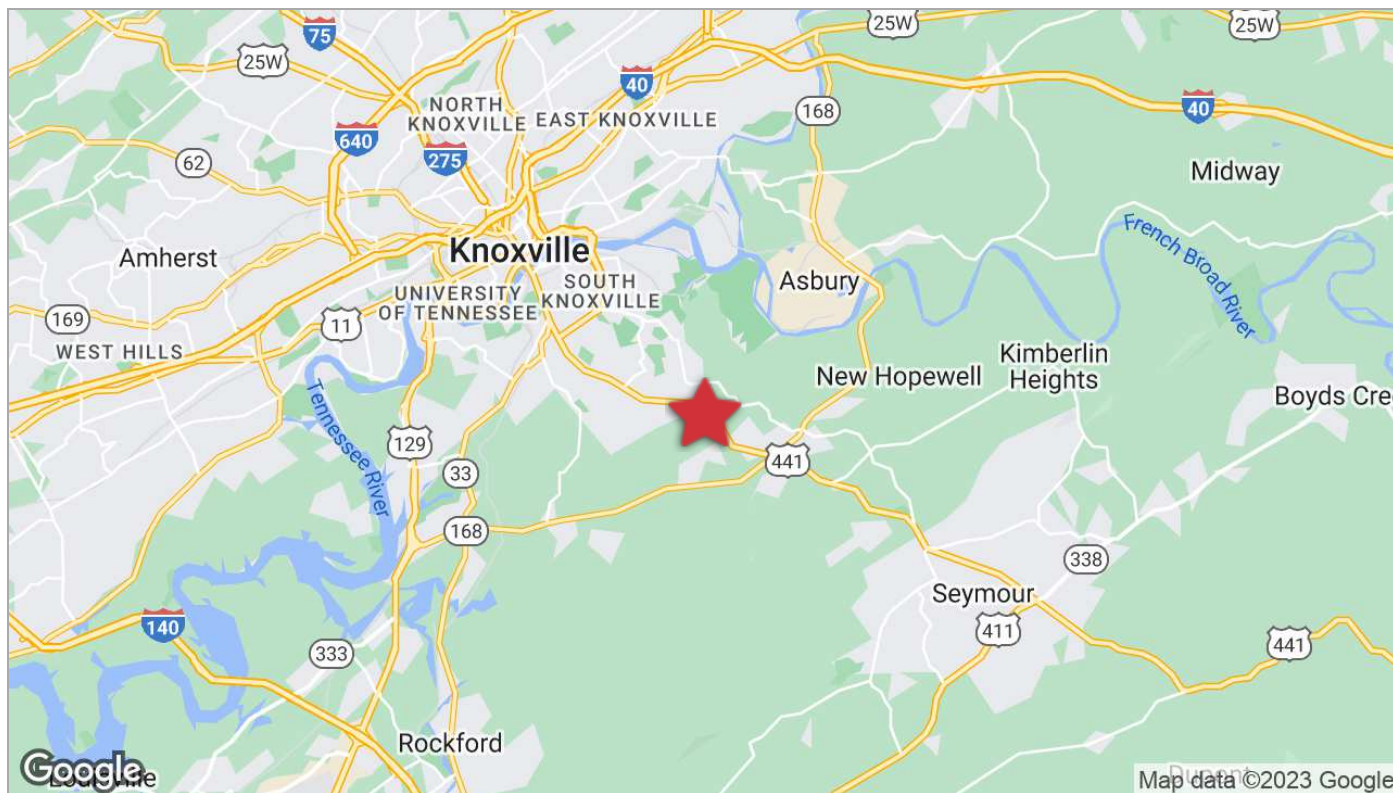
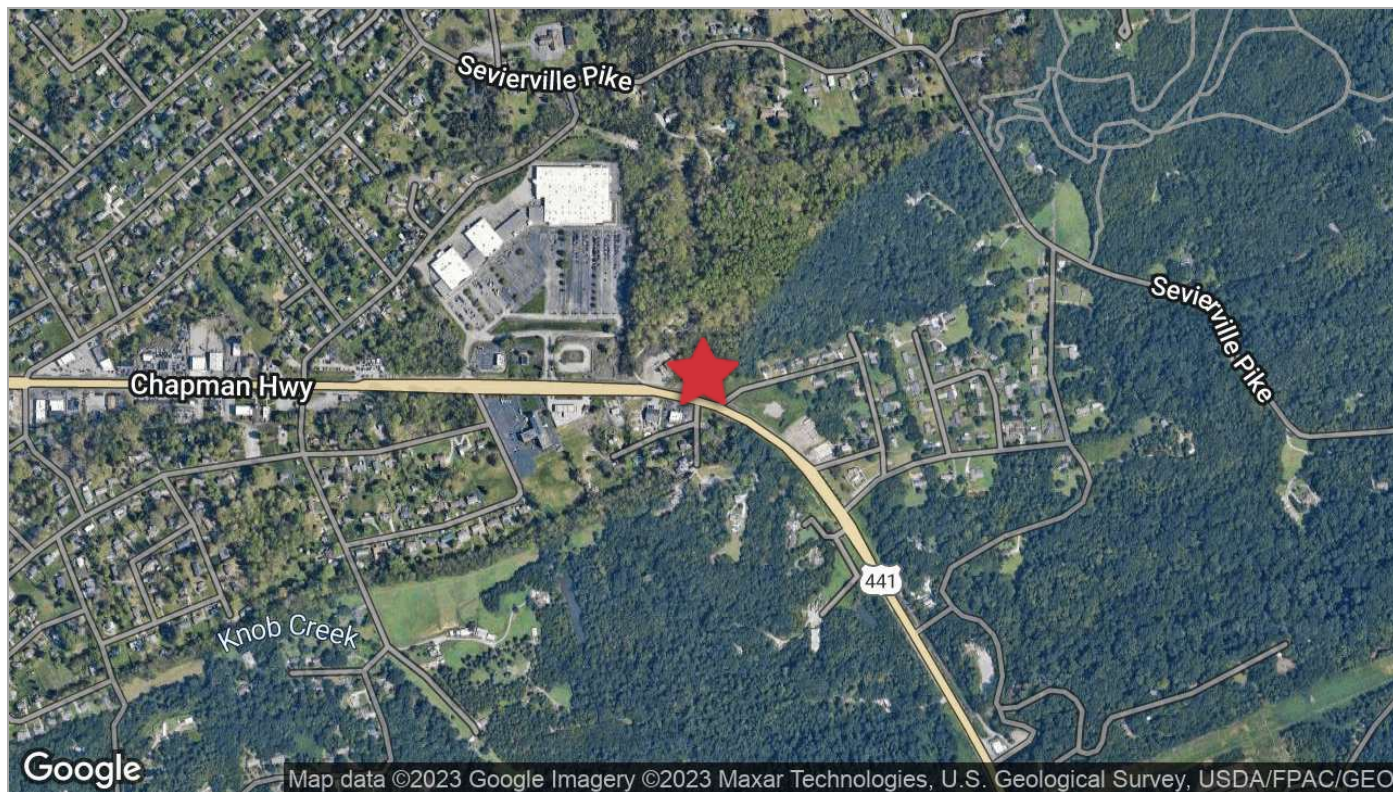
For Sale

High Visibility Chapman Highway Parcel



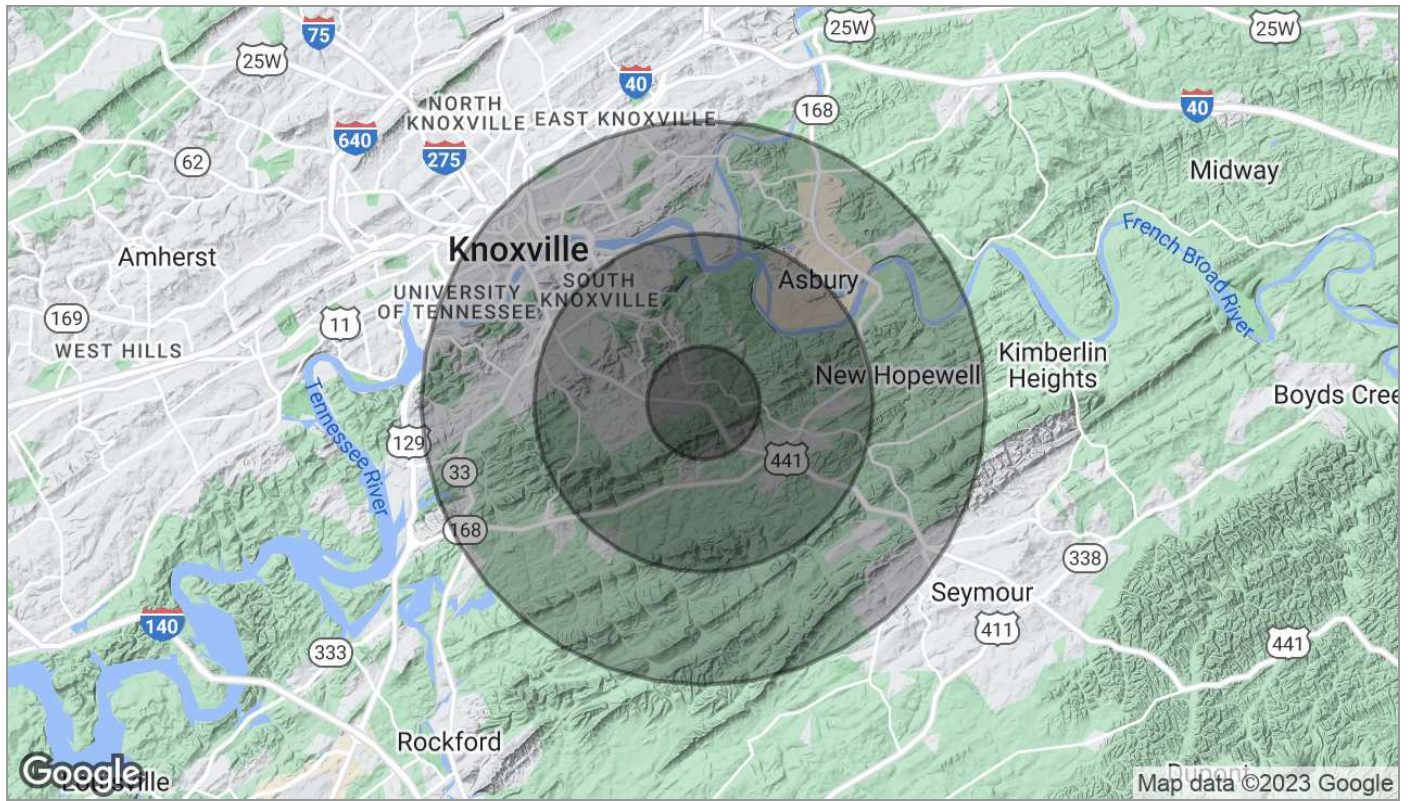
For Sale

High Visibility Chapman Highway Parcel



For Sale

High Visibility Chapman Highway Parcel



Population	1 Mile	3 Miles	5 Miles
TOTAL POPULATION	2,095	18,656	56,564
MEDIAN AGE	41.1	40.2	35.2
MEDIAN AGE (MALE)	40.2	38.6	34.1
MEDIAN AGE (FEMALE)	41.5	41.5	36.5
Households & Income	1 Mile	3 Miles	5 Miles
TOTAL HOUSEHOLDS	977	8,614	24,383
# OF PERSONS PER HH	2.1	2.2	2.3
AVERAGE HH INCOME	\$49,565	\$47,134	\$40,732
AVERAGE HOUSE VALUE	\$144,550	\$138,148	\$159,002

* Demographic data derived from 2020 ACS - US Census