

LAKE CRYSTAL - MAIN ST. - 145 S. PRICE REDUCED TO SETTLE ESTATE NOW ONLY \$23,500!!!



145 S. MAIN STREET, LAKE CRYSTAL, MN 56055

Property Description

PRICE REDUCED TO SETTLE ESTATE! This charming building is located on Main Street in Lake Crystal. Formerly a hair salon, it is also ideal as a retail or office space. There is a full basement that can be utilized as additional storage. The building is clean and in good condition with updated roof in 2012. The main building is 720 SQ FT and car port is 480 SQ FT. Call today for walk-thru!

Property Highlights

- Along main thoroughfare of Lake Crystal
- Open floor plan with a full basement for storage
- Charming historic building



Rosie Brunmeier
507.340.2463
rosie@cbcfishergroup.com

145 S. MAIN STREET, LAKE CRYSTAL, MN 56055

LAKE CRYSTAL - MAIN ST. - 145 S.



OFFERING SUMMARY

Sale Price:	\$23,500
Lot Size:	0.06 Acres
Year Built:	1910
Building Size:	720 SF
Zoning:	Commercial
Sale Price / SF:	\$32.64

DEMOGRAPHICS

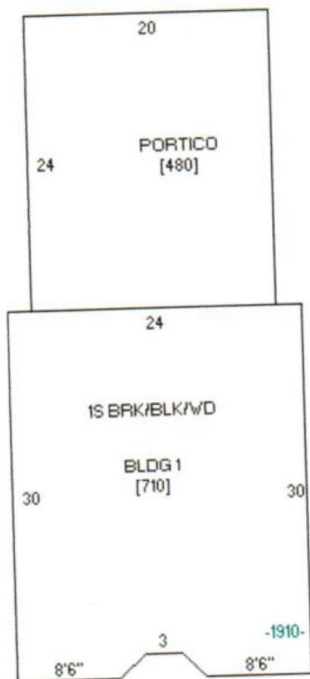
	5 MILES	10 MILES	15 MILES
Total Households	1,580	4,005	16,971
Total Population	3,889	9,951	42,938
Average HH Income	\$68,046	\$67,553	\$67,254



Rosie Brunmeier
507.340.2463
rosie@cbcfishergroup.com

145 S. MAIN STREET, LAKE CRYSTAL, MN 56055

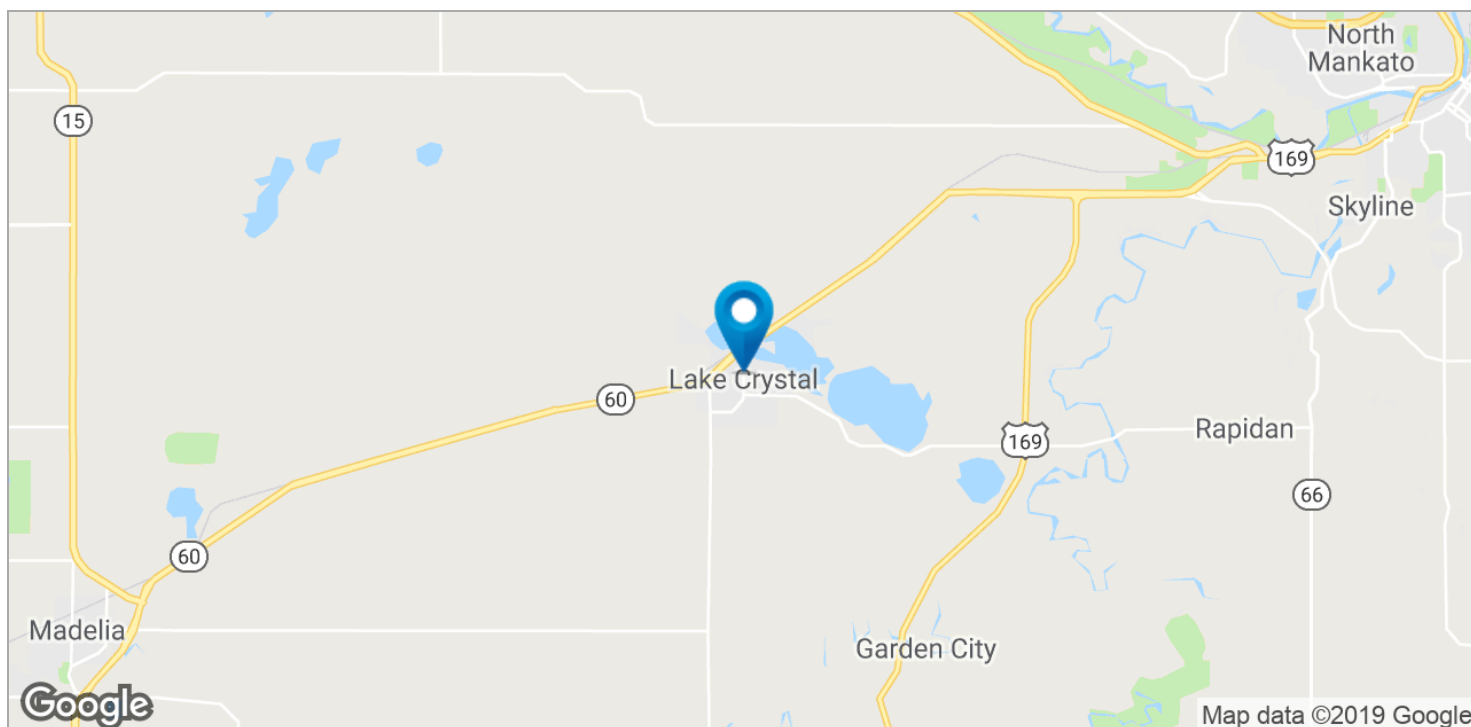
LAKE CRYSTAL - MAIN ST. - 145 S.



Rosie Brunmeier
507.340.2463
rosie@cbcfishergroup.com

145 S. MAIN STREET, LAKE CRYSTAL, MN 56055

LAKE CRYSTAL - MAIN ST. - 145 S.



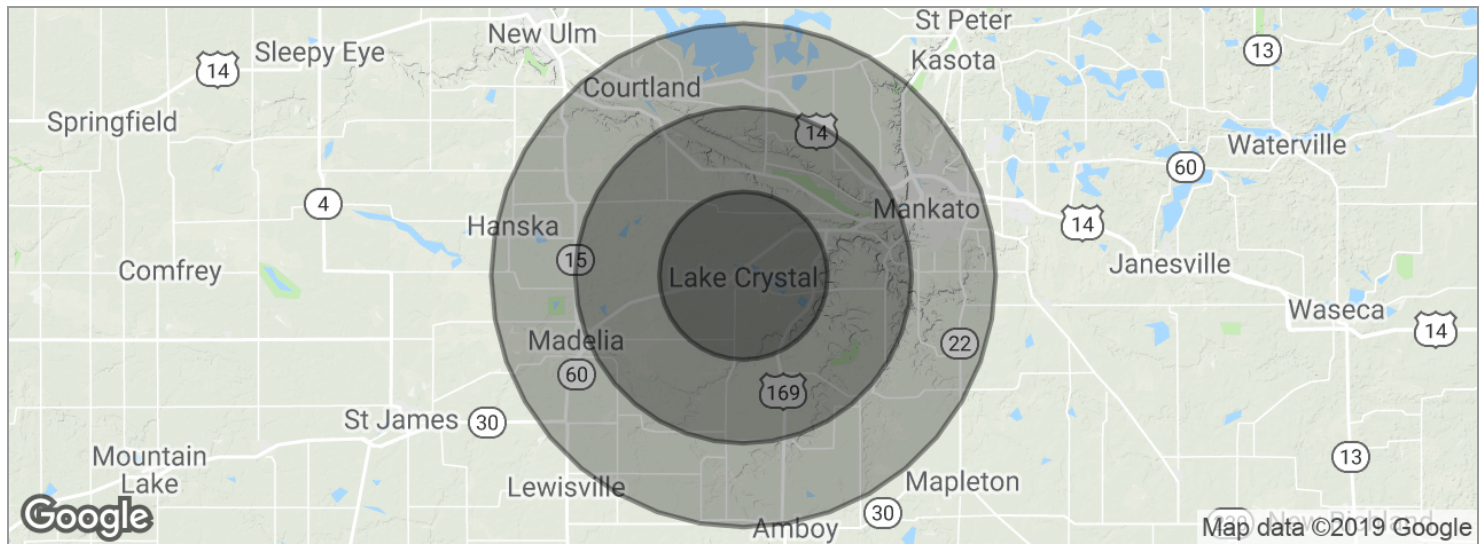
Rosie Brunmeier

507.340.2463

rosie@cbcfishergroup.com

145 S. MAIN STREET, LAKE CRYSTAL, MN 56055

LAKE CRYSTAL - MAIN ST. - 145 S.



POPULATION	5 MILES	10 MILES	15 MILES
Total population	3,889	9,951	42,938
Median age	37.3	39.5	35.9
Median age (male)	37.2	39.3	35.2
Median age (Female)	36.5	39.3	37.3
HOUSEHOLDS & INCOME	5 MILES	10 MILES	15 MILES
Total households	1,580	4,005	16,971
# of persons per HH	2.5	2.5	2.5
Average HH income	\$68,046	\$67,553	\$67,254
Average house value	\$183,949	\$190,846	\$192,130

* Demographic data derived from 2010 US Census

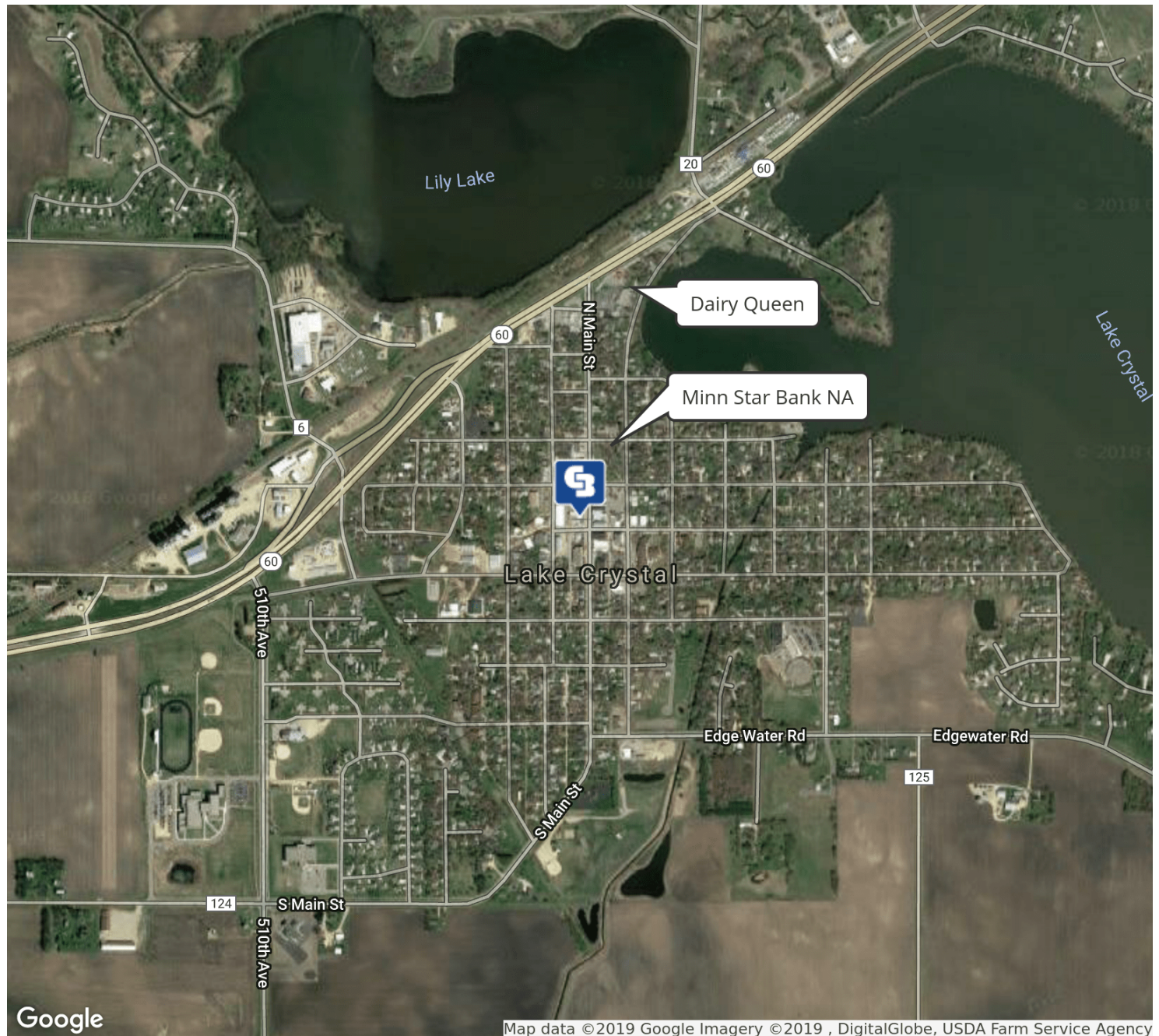
**Rosie Brunmeier**

507.340.2463

rosie@cbcfishergroup.com

145 S. MAIN STREET, LAKE CRYSTAL, MN 56055

LAKE CRYSTAL - MAIN ST. - 145 S.



Rosie Brunmeier

507.340.2463

rosie@cbcfishergroup.com