

FOR LEASE

## Former Walgreens - Long Beach, CA

5400 Cherry Avenue | Long Beach, CA



**13,680 SF**  
Freestanding  
Building Available

## Overview

## LEASE RATE

Contact Broker

## AVAILABLE SF

13,680 SF



## Description

High profile freestanding building with drive through in established retail corridor

- Term available through 2/28/2034.
- For more information visit [WAGDISPO.com](http://WAGDISPO.com)

## Nearby Retailers

**SUPERIOR**  
GROCERS

**ROSS**  
DRESS FOR LESS

**FOOD 4 LESS**

**CVS**  
pharmacy

**WSS**  
Shoes. Style. Selection.

**WinCo**  
FOODS

## Demographics

	1 MILE	3 MILES	5 MILES
Income	\$69,201	\$79,558	\$78,281
Households	37,249	246,318	710,481
Daytime Population	6,360	79,078	223,881

Year: 2018 | Source: Esri

## Contact

## TERRISON QUINN

949.698.1107 | [terrison.quinn@srsre.com](mailto:terrison.quinn@srsre.com)  
CA License No. 01789657

## ADAM HANDFIELD

949.698.1109 | [adam.handfield@srsre.com](mailto:adam.handfield@srsre.com)  
CA License No. 01959419

## Traffic Counts

Cherry Avenue	approx. 31,600 cars per day VPD
Market Street	approx. 13,800 cars per day VPD

Year: 2017 | Source: Costar

**SRS REAL ESTATE PARTNERS** | 610 Newport Center Drive, Suite 1500 | Newport Beach, CA 92660 | 949.698.1100

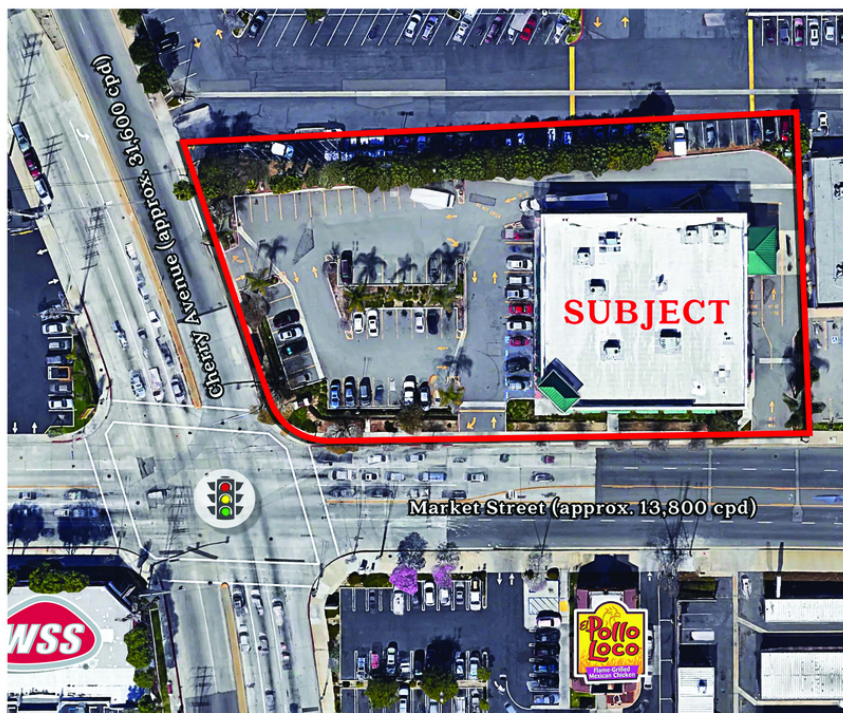
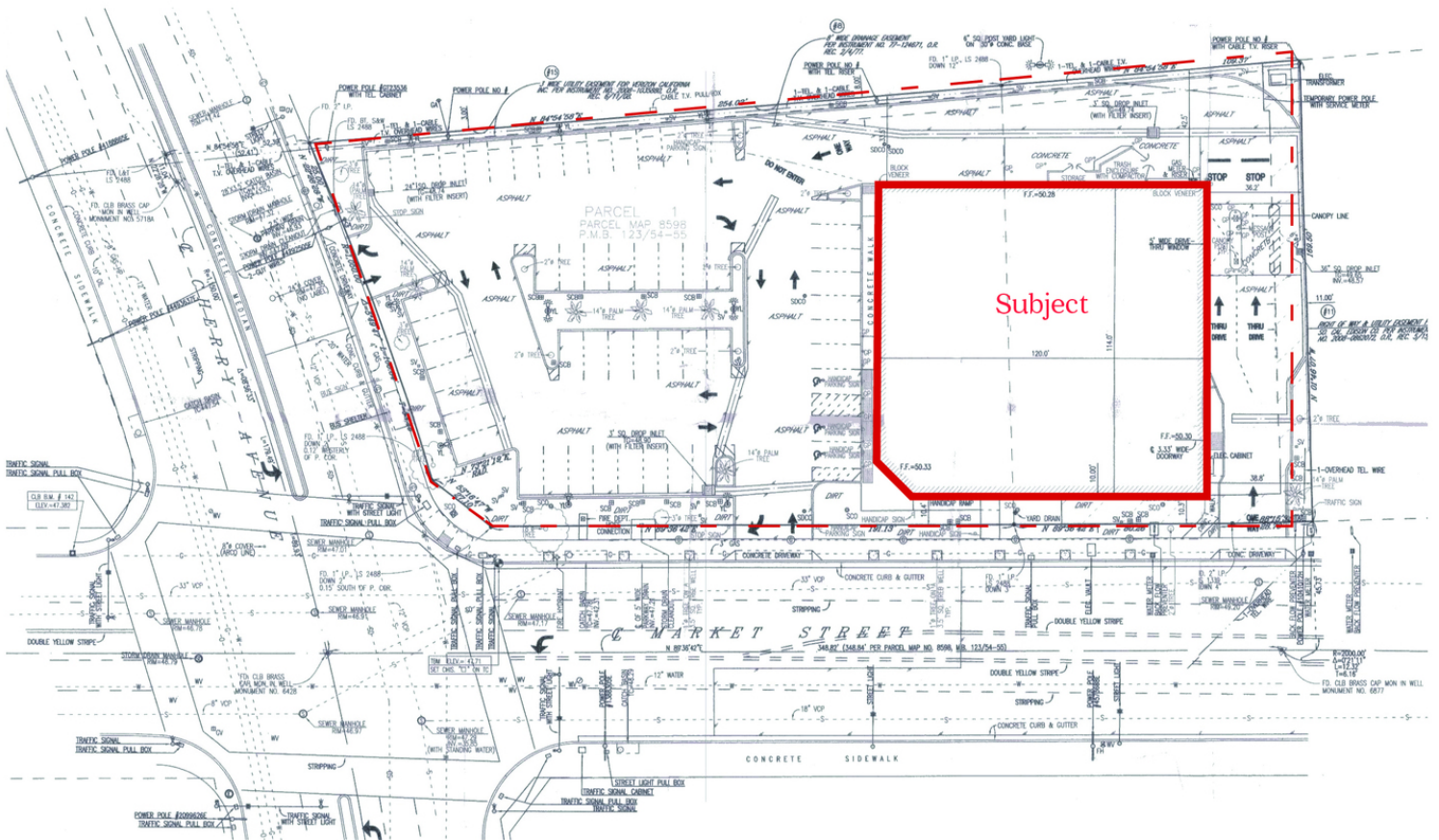
This information contained herein was obtained from sources deemed to be reliable; however SRS Real Estate Partners makes no guarantees, warranties or representations as to the completeness or accuracy thereof.

**SRSRE.COM**



# Former Walgreens - Long Beach, CA

5400 Cherry Avenue | Long Beach, CA



Parcel: 7157-015-026  
Land: 1.21 AC, 52,816 SF  
GLA: 13,680SF



# Former Walgreens - Long Beach, CA

5400 Cherry Avenue | Long Beach, CA

