

For Sale

Special Purpose

30,000 SF



3700 N Robison Rd

Texarkana, Texas 75503

Property Description

Beautiful church facility in prime retail location;

30,000 sf building situated on 2.58 acres;

Includes main facility, ample parking, gym, and children's play area;

Neighboring businesses include Central Mall, Arby's, CVS, Walgreen's, Grandy's, McDonald's, Subway, and Albertson's;

OFFERING SUMMARY

Sale Price	\$1,600,000
Lot Size	2.58 Acres
Building Size	30,000 SF

DEMOGRAPHICS

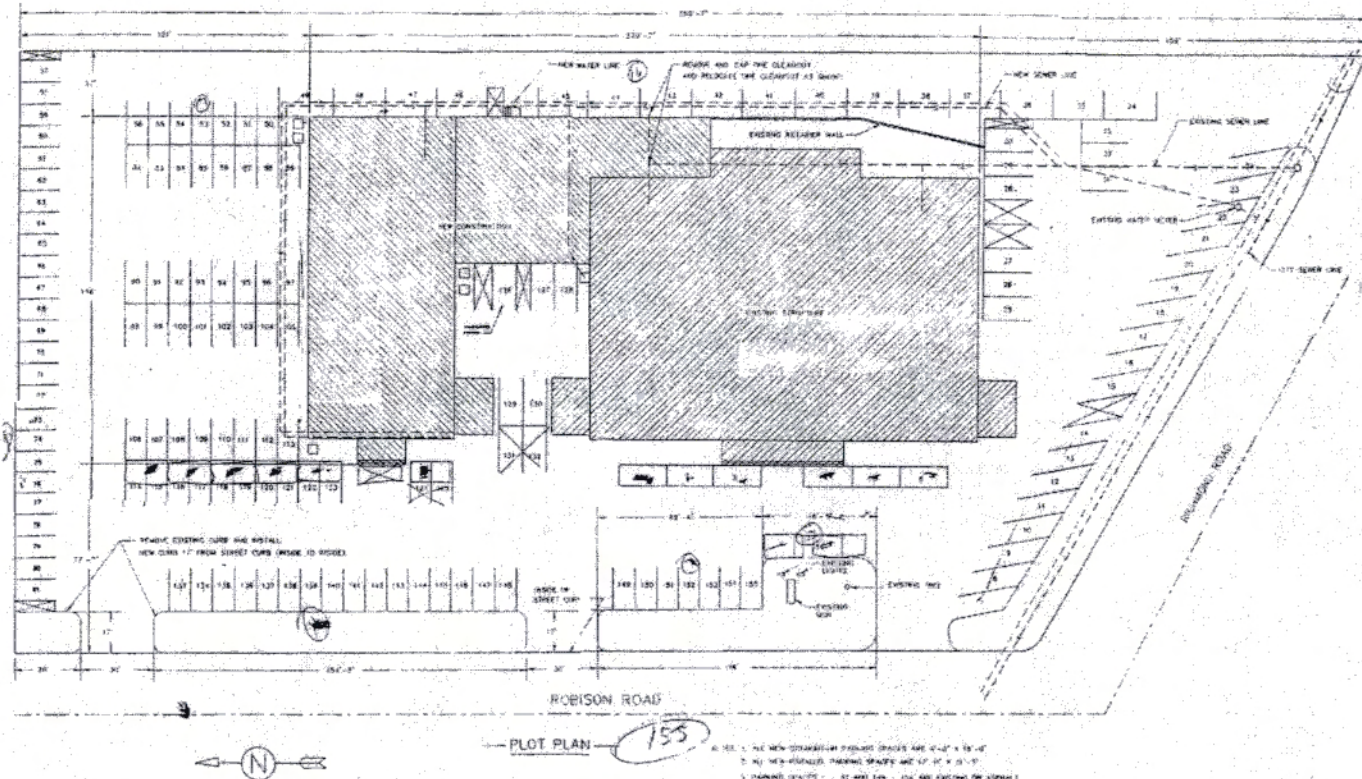
Stats	Population	Avg. HH Income
1 Mile	5,348	\$50,538
3 Miles	39,425	\$50,869
5 Miles	77,107	\$51,872

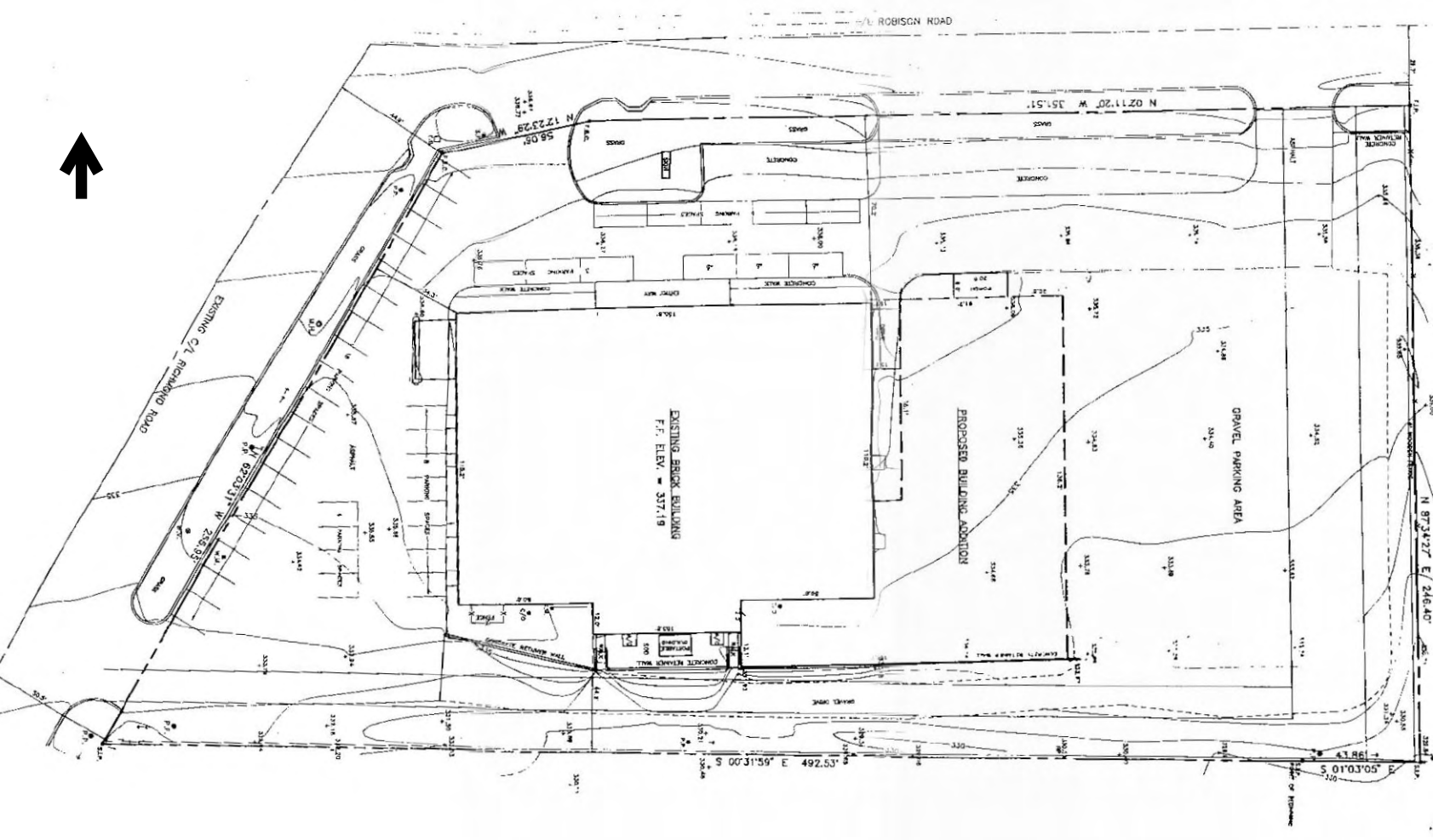
For more information

Jerry Brewer

O: 903 793 2666
jerry@amreal.com

PLAT

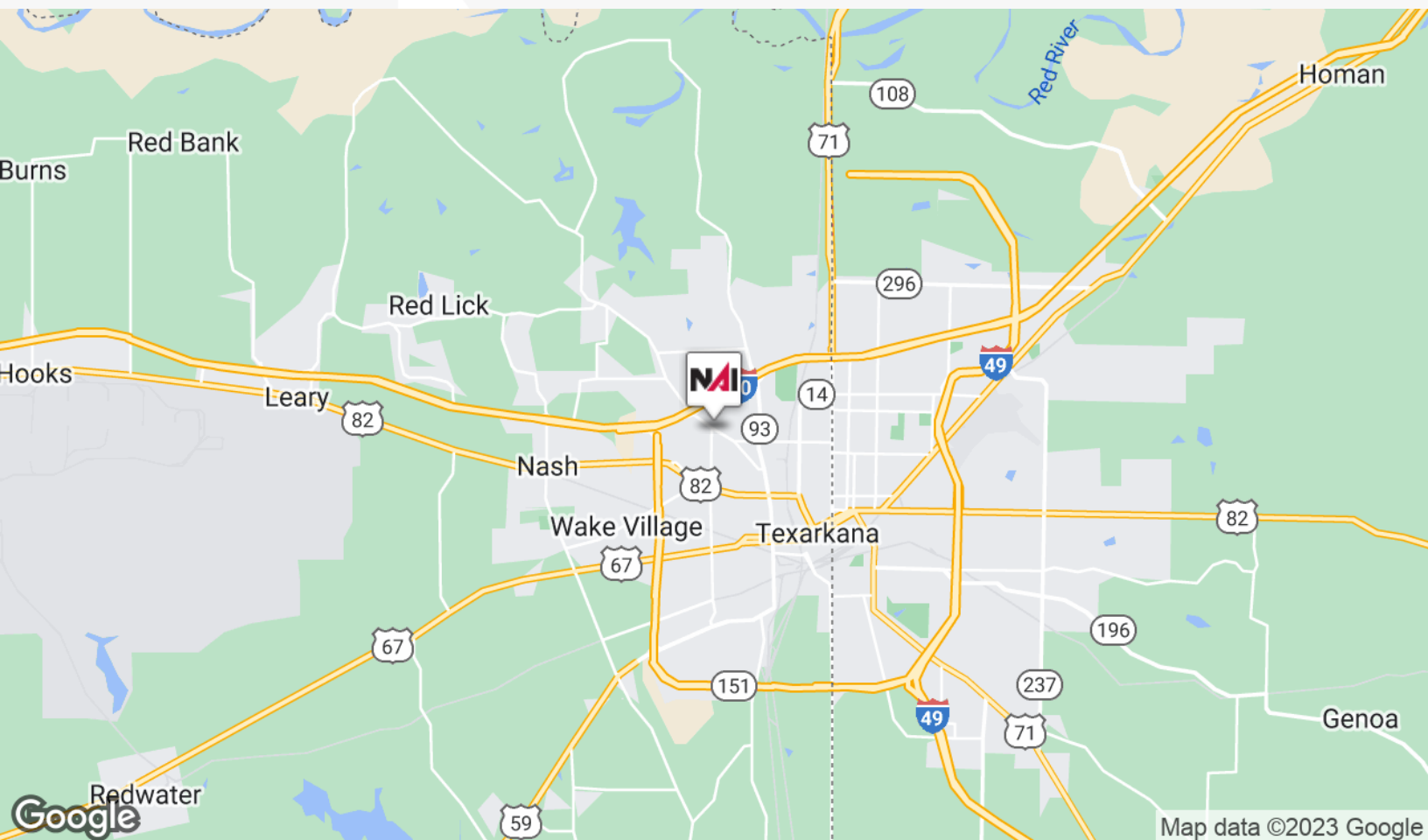
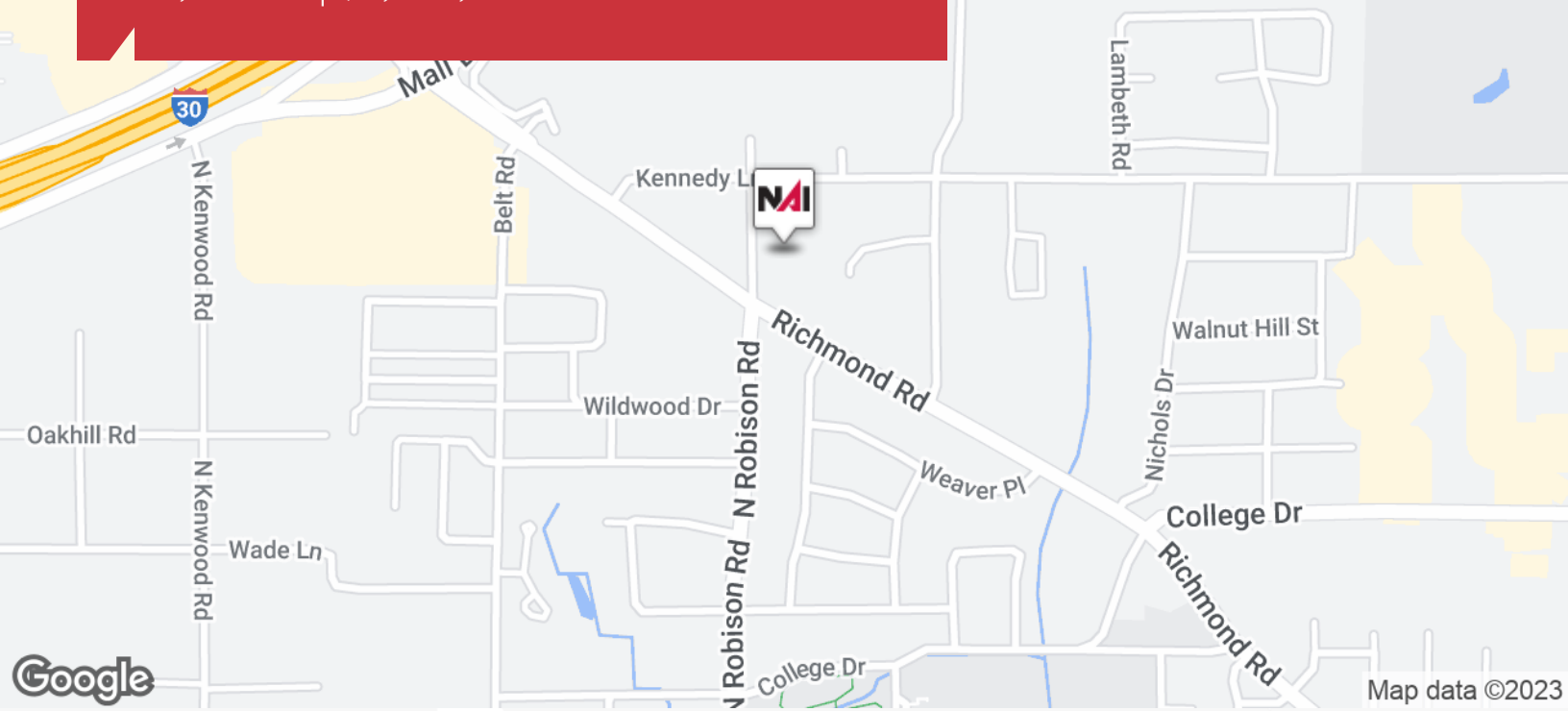




For Sale

Special Purpose Property

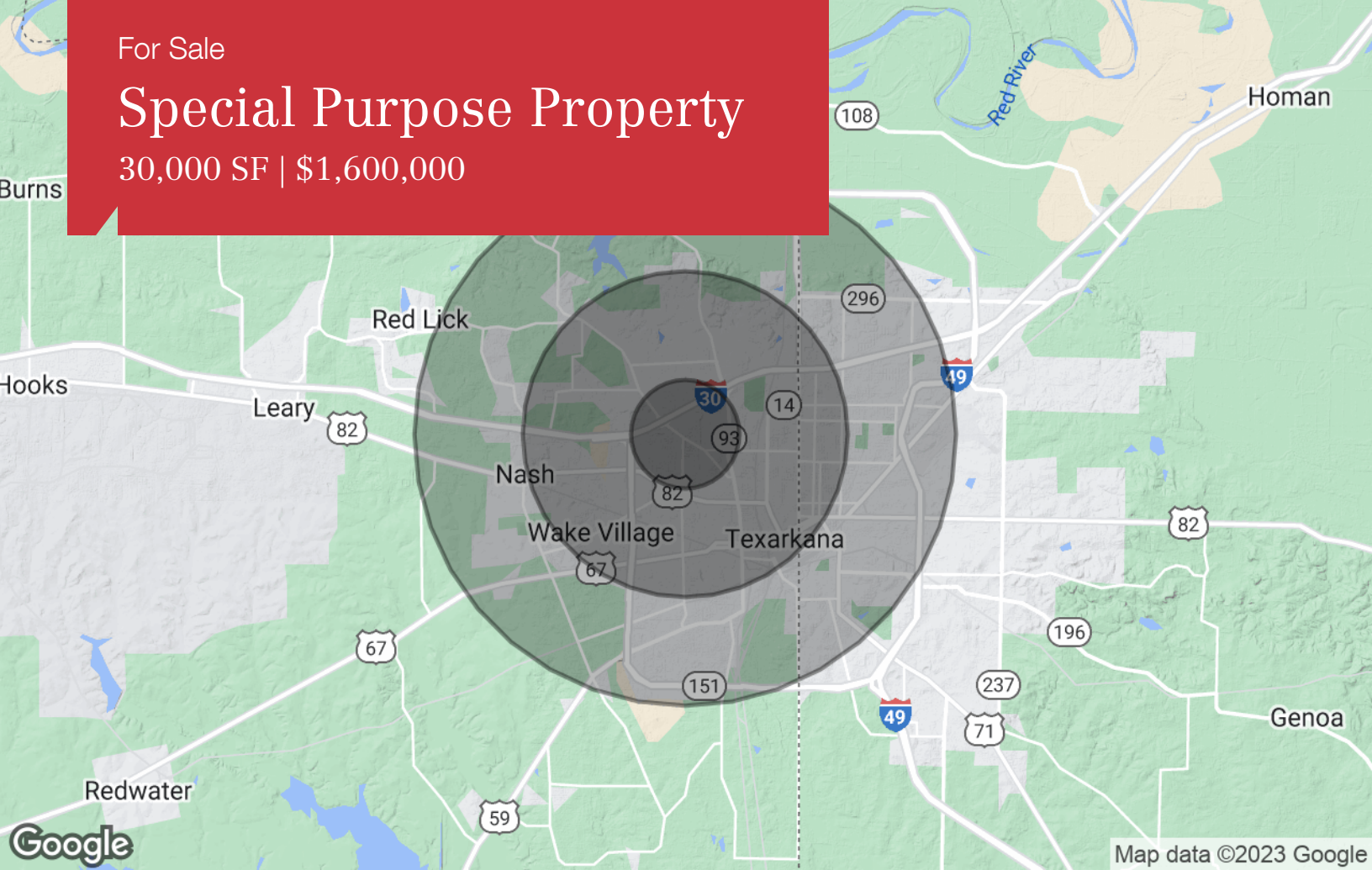
30,000 SF | \$1,600,000



For Sale

Special Purpose Property

30,000 SF | \$1,600,000



Population

	1 Mile	3 Miles	5 Miles
TOTAL POPULATION	5,348	39,425	77,107
MEDIAN AGE	36.5	35.1	35.3
MEDIAN AGE (MALE)	31.2	31.5	32.7
MEDIAN AGE (FEMALE)	40.0	38.7	38.2

Households & Income

	1 Mile	3 Miles	5 Miles
TOTAL HOUSEHOLDS	2,212	15,532	29,495
# OF PERSONS PER HH	2.4	2.5	2.6
AVERAGE HH INCOME	\$50,538	\$50,869	\$51,872
AVERAGE HOUSE VALUE	\$123,198	\$130,493	\$123,558

Race

	1 Mile	3 Miles	5 Miles
% WHITE	56.9%	58.8%	60.4%
% BLACK	34.3%	36.4%	35.7%
% ASIAN	0.4%	0.5%	0.7%
% HAWAIIAN	0.0%	0.0%	0.1%
% INDIAN	0.8%	0.6%	0.6%
% OTHER	7.6%	3.6%	2.6%

Ethnicity

	1 Mile	3 Miles	5 Miles
% HISPANIC	5.9%	5.9%	5.5%

* Demographic data derived from 2020 ACS - US Census

Nearby Businesses

