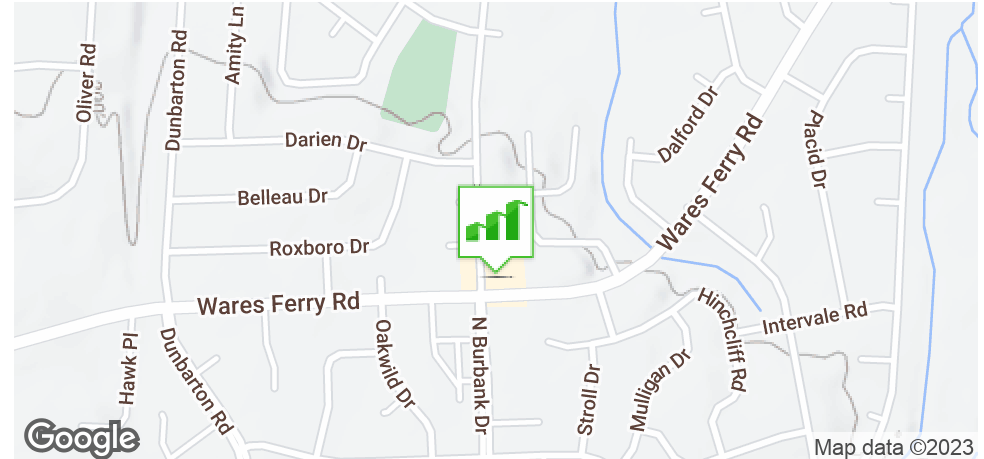


# 6001 WARES FERRY ROAD

6001 WARES FERRY RD, MONTGOMERY, AL 36117

## Executive Summary



### OFFERING SUMMARY

Available SF:	Fully Leased
Lease Rate:	N/A
Lot Size:	0.52 Acres
Year Built:	1980
Building Size:	5,650
Zoning:	B-4 Planned Commercial (local)
Price / SF:	-

### PROPERTY HIGHLIGHTS

- GREAT RETAIL AND RESTURANT SPACE AVAILABLE
- ON-SITE PARKING FOR EMPLOYEES & CUSTOMERS
- 0.8± MILE FROM ATLANTA HWY
- 0.8± MILE FROM EASTERN BLVD
- 2.75 MILE FROM I-85
- THIS IS A CENTRALLY LOCATED FAMILY ATMOSPHERE RETAIL STRIP CENTER. LOCATED AT THE INTERSECTION OF WARES FERRY ROAD AND BURBANK DRIVE BEHIND EASTDALE MALL AND CONVENIENT TO THE EASTERN BLVD & ATLANTA HWY.

### DEMOGRAPHICS

	1 MILE	3 MILES	5 MILES
Total Households	3031	15759	40365
Total Population	7009	36150	95599
Average HH Income	\$45,076	\$66,189	\$72,439

### JON MASTERS, CCIM

334.387.2724  
Jmasters@mcrmpm.com

### MOORE COMPANY REALTY

312 Catoma St #200, Montgomery, AL 36104  
334.262.1958 | moorecompanyrealty.com



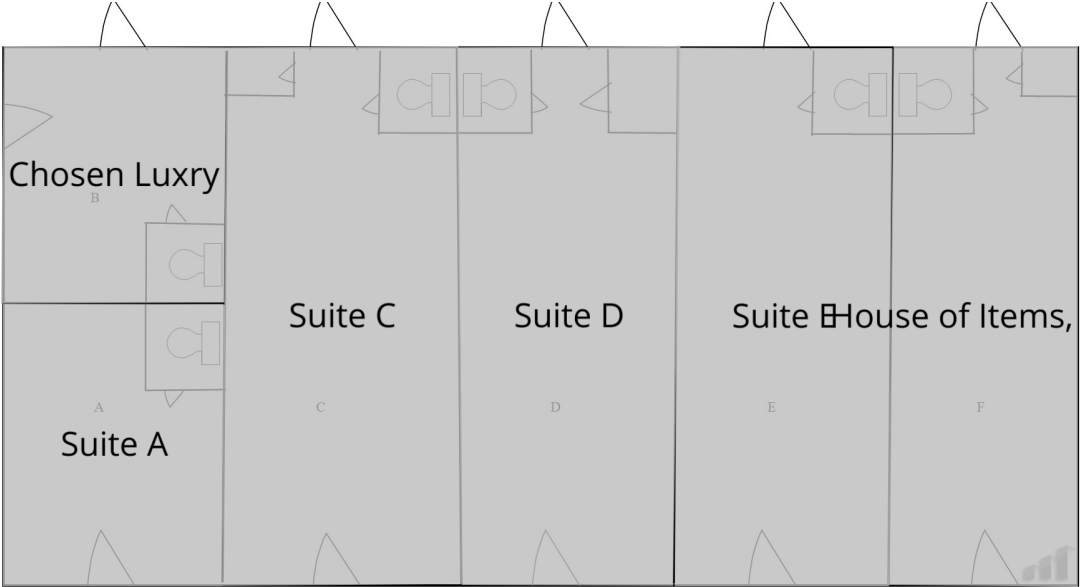
# 6001 WARES FERRY ROAD

6001 WARES FERRY RD, MONTGOMERY, AL 36117

Available Spaces

LEASED

LEASE TYPE | -  
TOTAL SPACE | Fully Leased  
LEASE TERM | Negotiable  
LEASE RATE | N/A



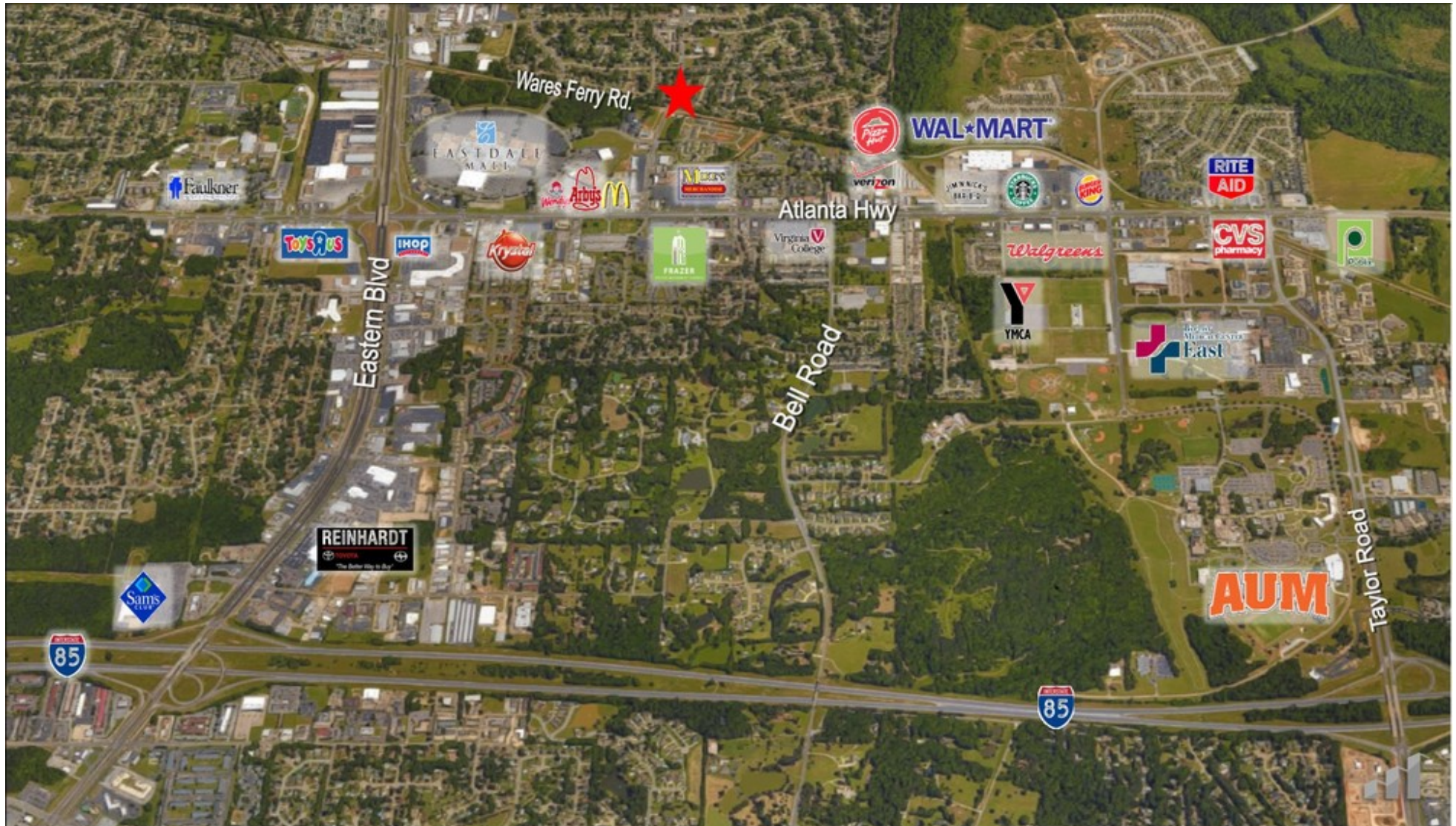
SUITE	TENANT	SIZE	TYPE	RATE	DESCRIPTION
-------	--------	------	------	------	-------------



# 6001 WARES FERRY ROAD

6001 WARES FERRY RD, MONTGOMERY, AL 36117

Retail Map



JON MASTERS, CCIM

334.387.2724

Jmasters@mcrmpm.com

MOORE COMPANY REALTY

312 Catoma St #200, Montgomery, AL 36104

334.262.1958 | moorecompanyrealty.com

