

HIGH VISIBILITY PROFESSIONAL SPACE

1328 SW Baseline Street, Hillsboro, Oregon



PROPERTY DESCRIPTION

AVAILABLE SPACE

4,235 SF

Potentially divisible into two smaller spaces

PARKING

5.8/1,000 SF

ZONING

General Commercial

LEASE RATE

\$18.00/SF NNN



Kevin VandenBrink
503.972.7289
kevinv@macadamforbes.com



**COMMERCIAL
REALTY ADVISORS
NORTHWEST LLC**

Kathleen Healy

503.595.7558

kathleen@cra-nw.com

Ashley Heichelbech

503.595.7577

ashley@cra-nw.com

1800 SW First Avenue, Suite 650 | Portland OR 97201 | WWW.MACADAMFORBES.COM | 503.227.2500

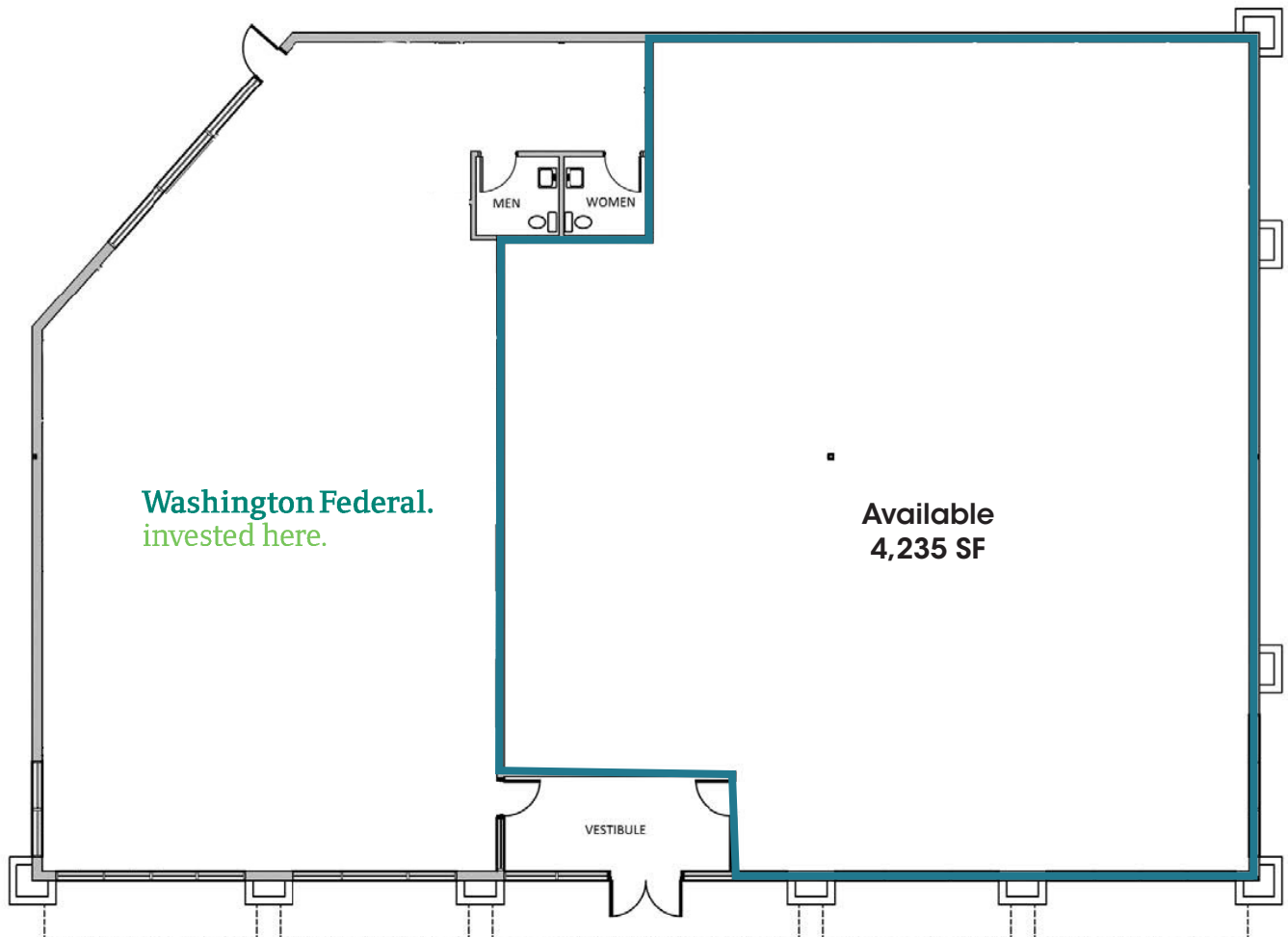
All of the information contained herein was obtained either from the owner or other parties we consider reliable. We have no reason to doubt its accuracy, however we do not guarantee it.

1328 SW Baseline Street

Hillsboro, Oregon

FOR LEASE

Space Plan



FEATURES

- Anchored by Washington Federal
- High visibility location at the intersection of SW Oak Street and SW Baseline Street in the heart of Hillsboro
- Traffic Count at SW Oak St. & SW Baseline St.: 32,115 ADT
- Ample parking



Kevin VandenBrink
503.972.7289
kevinv@macadamforbes.com



Kathleen Healy
503.595.7558
kathleen@cra-nw.com

Ashley Heichelbech
503.595.7577
ashley@cra-nw.com

1328 SW Baseline Street

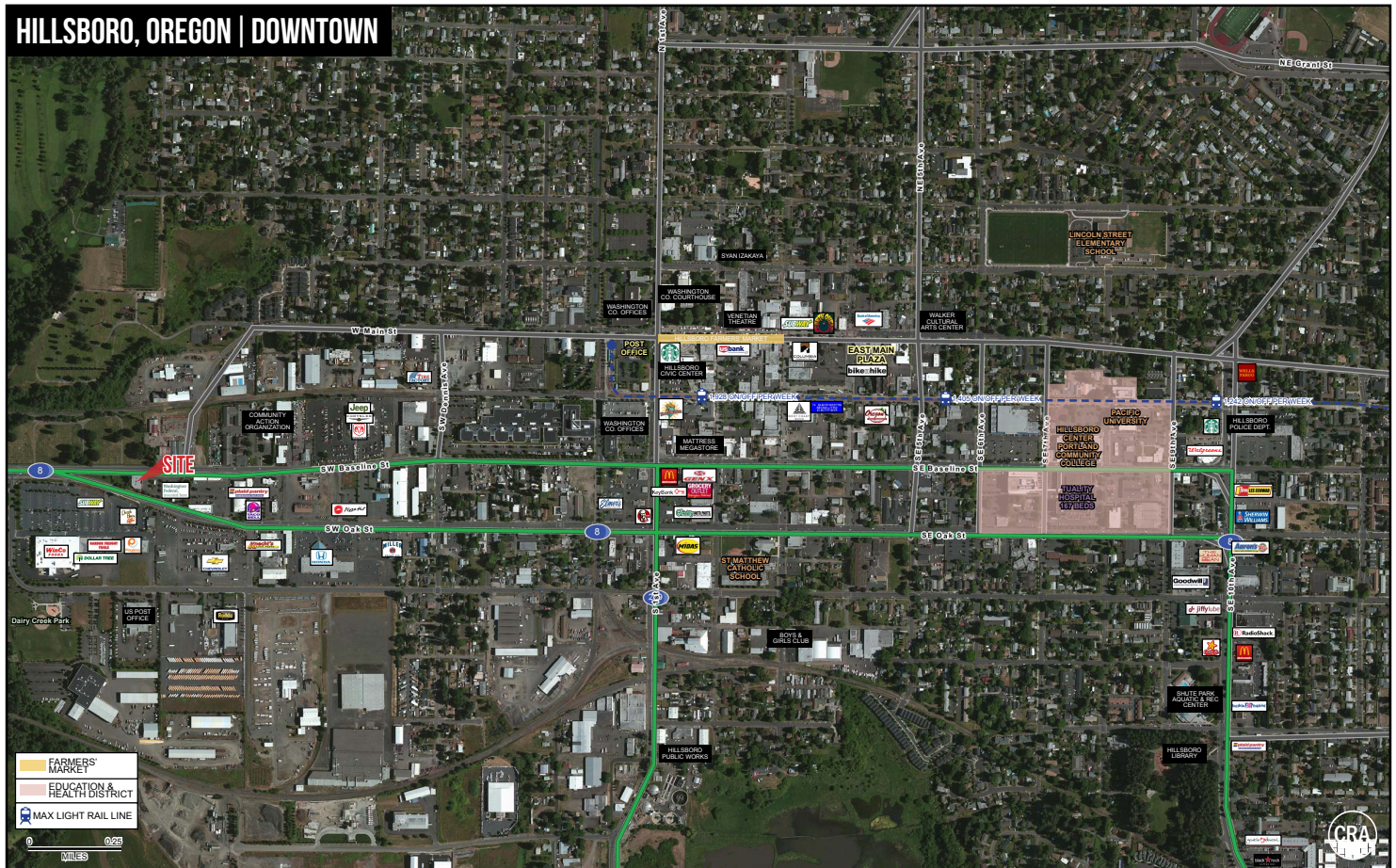
Hillsboro, Oregon

FOR LEASE



DEMOGRAPHICS

	1 Mile	3 Miles
Population	5,896	62,244
Households	1,862	20,027
Median HH Income	\$42,688	\$63,249
Pop. Growth '16-'21	↑6.4%	↑6.0%
HH Growth '16-'21	↑6.5%	↑6.0%



Kevin VandenBrink
503.972.7289
kevinv@macadamforbes.com



COMMERCIAL
REALTY ADVISORS
NORTHWEST LLC

Kathleen Healy
503.595.7558
kathleen@cra-nw.com
Ashley Heichelbech
503.595.7577
ashley@cra-nw.com