

For Lease: 1,552 SF
Restaurant



23725 John R

Hazel Park, Michigan 48030

Property Highlights

- Great Restaurant Space
- Fantastic Opportunity In the Heart of the Successful Hazel Park Culinary District
- Across From a New Four Story Mixed Use Development to Start Late Summer 2023
- 1,552 SF Available For Lease, with an Additional 1,500 SF Patio or Building Addition Possible
- Steps Away from Popular Mabel Gray and FRAMEBar
- 24 Exclusive Onsite Parking Spots
- Lease Rate: \$3,950 Per Month plus NNN



For more information

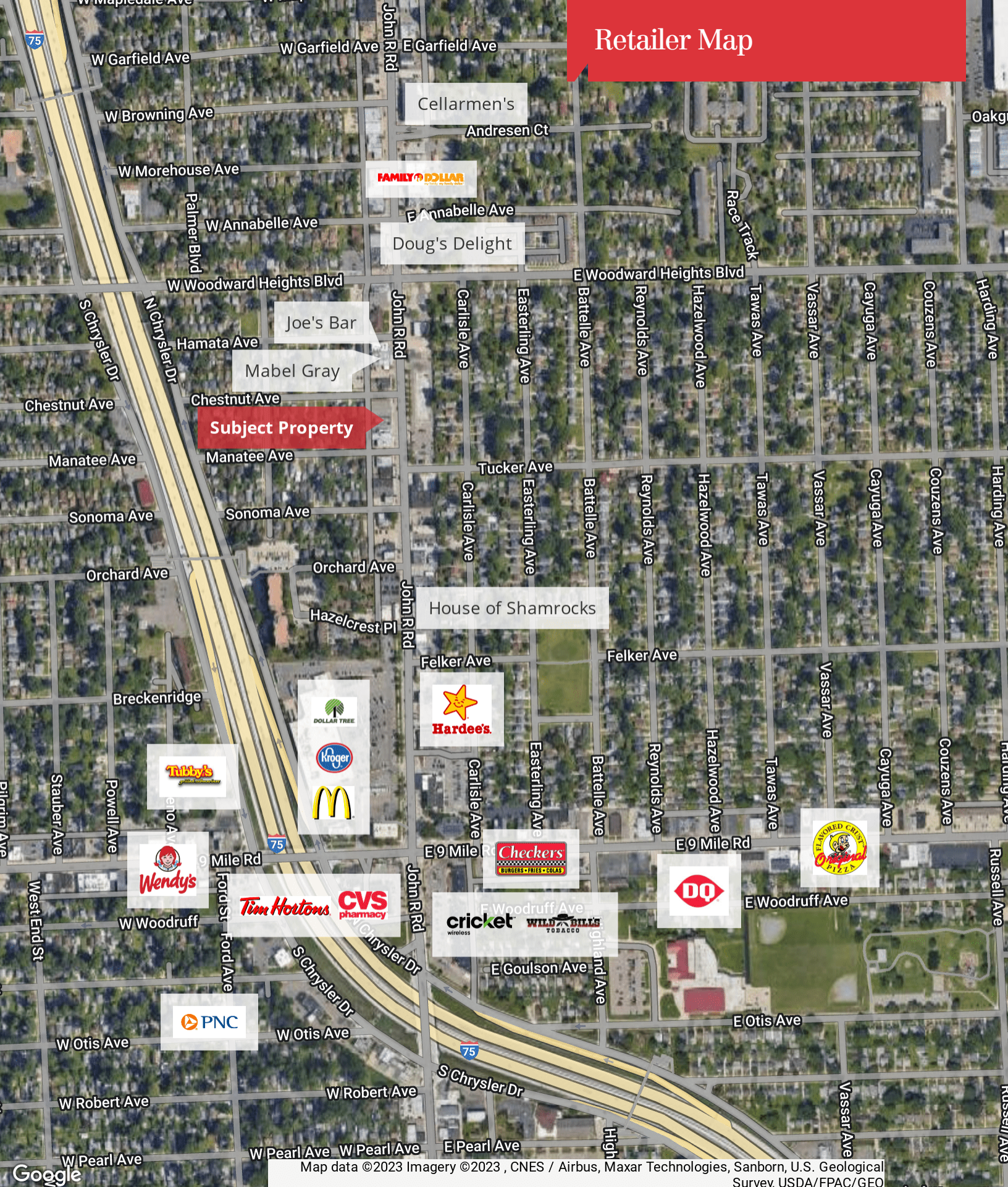
Rick Ax

O: 248 351 6319
ax@farbman.com

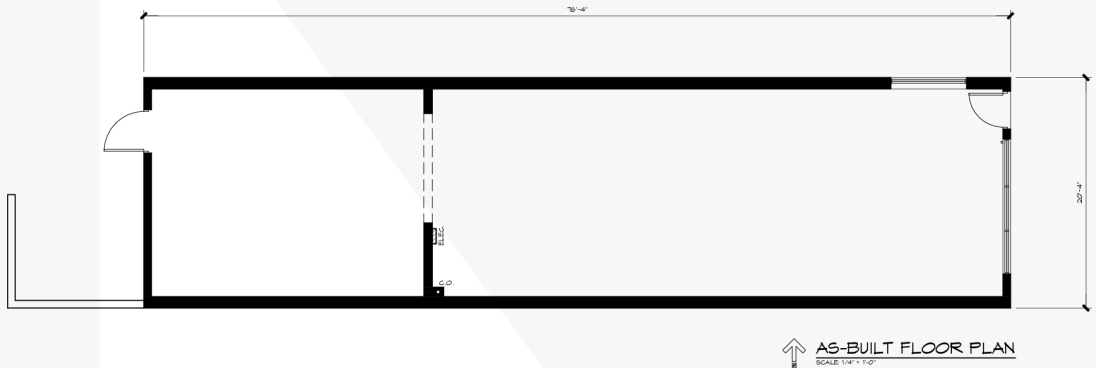
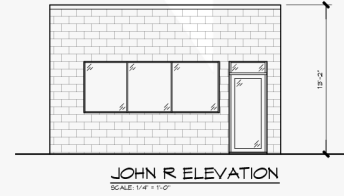
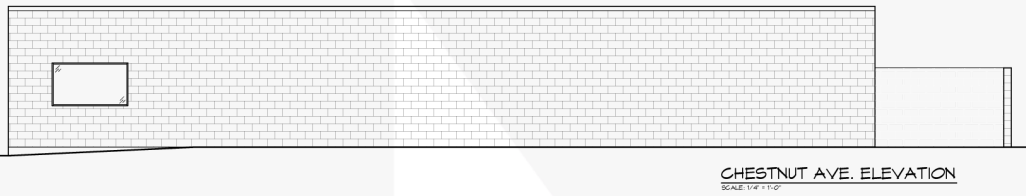
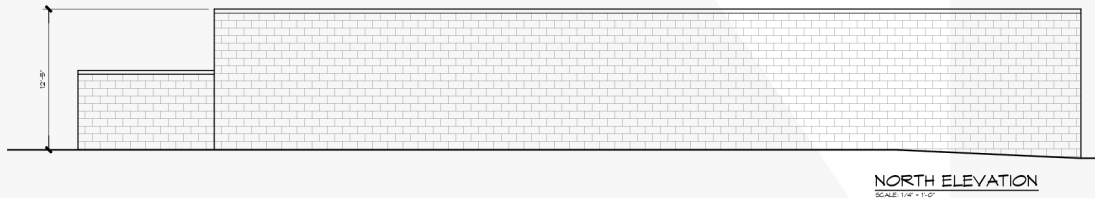
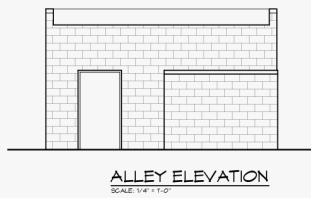
Additional Photos



Retail Map



Map data ©2023 Imagery ©2023, CNES / Airbus, Maxar Technologies, Sanborn, U.S. Geological Survey, USDA/FPAC/GEO



REVISION	01/08/2020
01/08/2020	01/08/2020



PROJECT LOCATION	23125 JOHN R. RD. HAZEL PARK, MI 48030
DRAWING TITLE	AS-BUILT FLOOR PLAN
DRAWN	RZ
CHECKED	SCD/JPM
APPROVED	SCD/JPM
DO NOT SCALE THIS PRINT USE FIGURED DIMENSIONS ONLY	
PROJECT NUMBER	DE012115
SHEET NUMBER	AS-1