

# SHERWOOD WEST OFFICE PLAZA II

20015 SW Pacific Highway, Sherwood, Oregon



## PROPERTY DESCRIPTION

### BUILDING SIZE

24,300 SF located on three floors

### AVAILABLE SPACE

Third Floor: 8,100 RSF, divisible to  $\pm$  3,000 SF

### LEASE RATE

Call for Rates

### LOAD FACTOR

12% Load Factor



**Kevin VandenBrink**

503.972.7289

kevinv@macadamforbes.com

**Brian Mitchell**

503.972.7284

brian@macadamforbes.com

1800 SW First Avenue, Suite 650 | Portland OR 97201 | [WWW.MACADAMFORBES.COM](http://WWW.MACADAMFORBES.COM) | 503.227.2500

All of the information contained herein was obtained either from the owner or other parties we consider reliable. We have no reason to doubt its accuracy, however we do not guarantee it.

# 20015 SW Pacific Highway

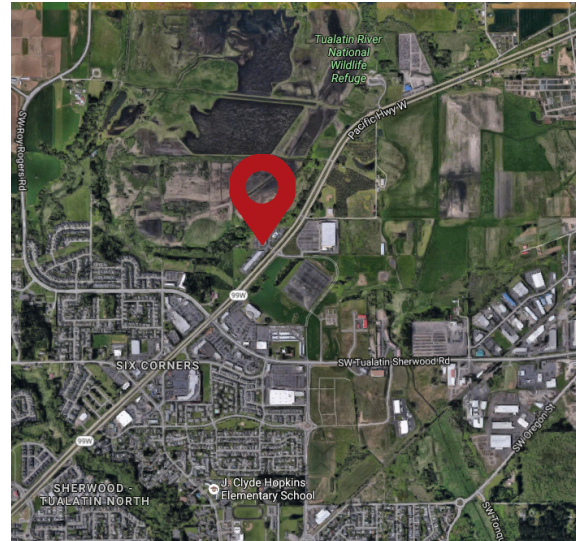
Sherwood, Oregon

# FOR LEASE

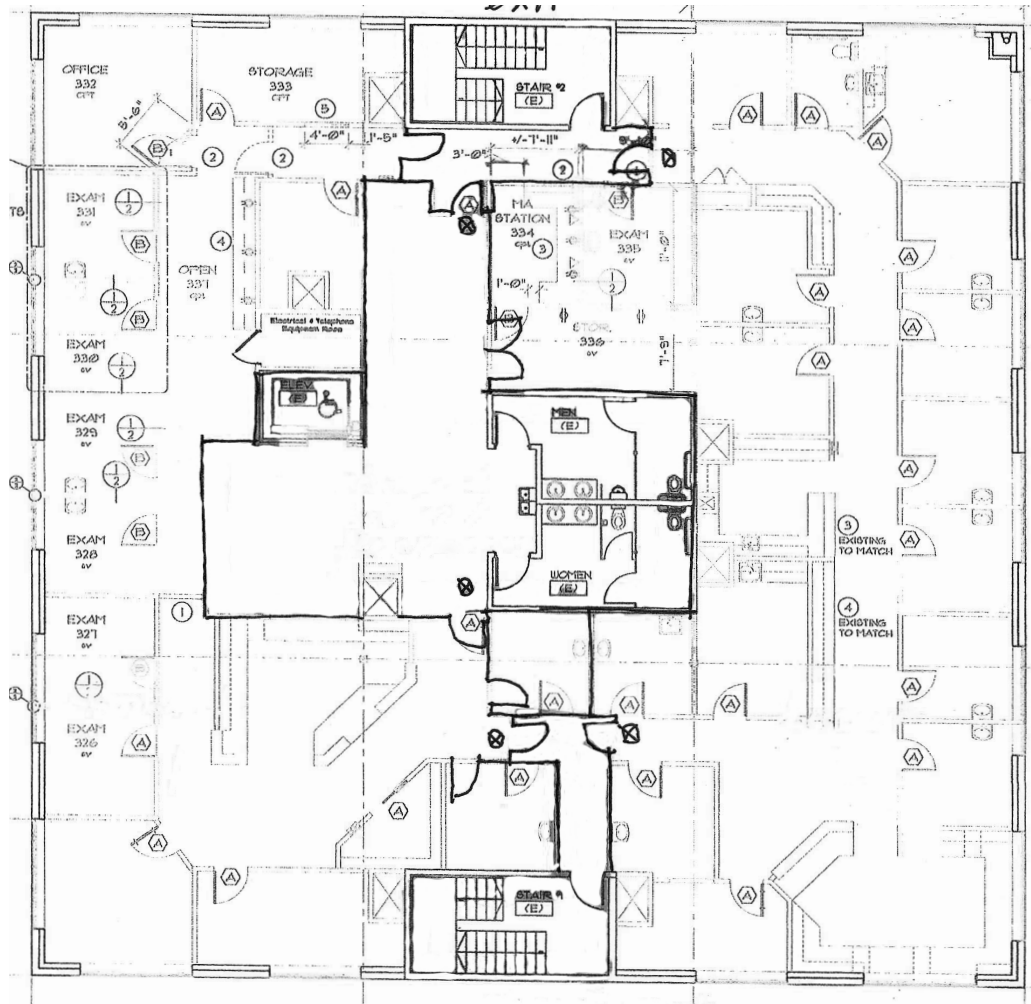


## FEATURES

- Great access to Highway 99W & Tualatin-Sherwood Road
- Overlooks Tualatin Valley Wildlife Refuge
- Building signage on Highway 99W may be available
- Located on signalized intersection; across from Sherwood Home Depot



## FLOOR PLAN



**Kevin VandenBrink**  
503.972.7289  
kevinv@macadamforbes.com

**Brian Mitchell**  
503.972.7284  
brian@macadamforbes.com