

9.13 Acre Site in Sherwood

9710 SW Day Road, Sherwood, Oregon



PROPERTY DESCRIPTION

IMPROVEMENTS

House: 2,750 SF

SITE

9.13 Acres (on two tax lots)

ZONING

FD-20

Inside Urban Growth Boundary.
May be annexed to City of Wilsonville
in the future.

UTILITIES

Water, Storm Water, Sewer, Electricity, Gas

2017-2018 TAXES

\$7,205.31

SALE PRICE

\$3,000,000

COMMENTS

- Significant frontage on SW Day Road
- Immediate access to I-5



Joe Kappler
503.972.7294
joek@macadamforbes.com

Stu Peterson, SIOR
503.972.7288
stu@macadamforbes.com

1800 SW First Avenue, Suite 650 | Portland OR 97201 | WWW.MACADAMFORBES.COM | 503.227.2500

9710 SW Day Road




Sherwood, Oregon

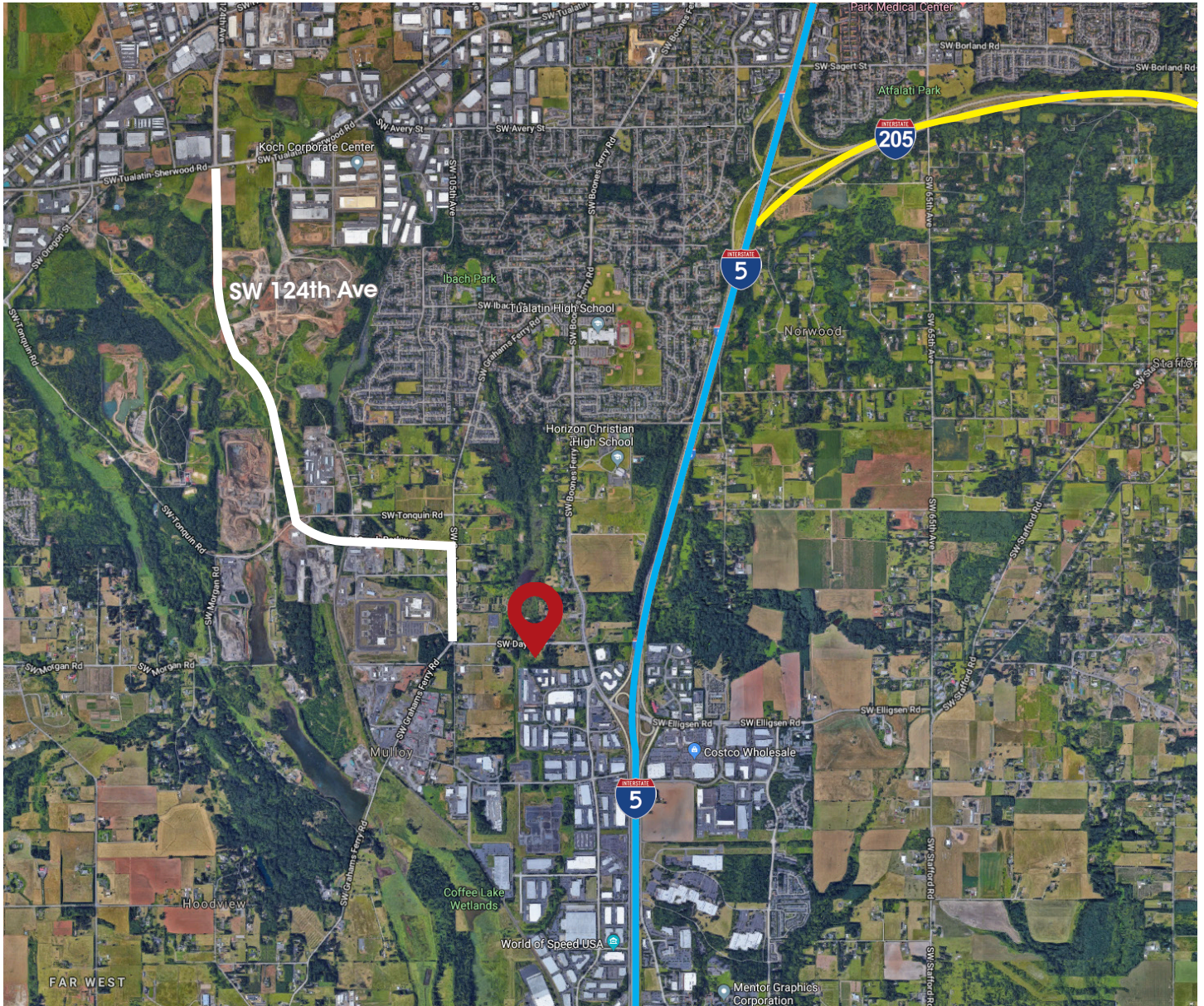
FOR SALE



LOCATION

DRIVE DISTANCES

	I-5:	1.0 Mile
	I-205:	3.5 Miles
	SW Tualatin-Sherwood Road (via SW 124th Ave Project):	3.0 Miles



Joe Kappler
503.972.7294
joek@macadamforbes.com

Stu Peterson, SIOR
503.972.7288
stu@macadamforbes.com