

# THE HOOD BUILDING

3611 SW Hood Avenue, Portland, Oregon



## PROPERTY DESCRIPTION

### BUILDING SIZE

Office Building: 9,487 SF  
Garage: 2,706 SF

### LAND AREA

13,068 SF

### PARKING

9 exterior parking stalls  
9 secure interior parking stalls

### ZONING

Co2 - Office Commercial 2  
As of May 2018 zoning will be:  
CM2, Commercial Mixed Use 2

### SALE PRICE

\$3,250,000

**FOR SALE**



1800 SW First Avenue, Suite 650 | Portland OR 97201 | [WWW.MACADAMFORBES.COM](http://WWW.MACADAMFORBES.COM) | 503.227.2500

**Colin Russell**  
503.972.7295  
[colin@macadamforbes.com](mailto:colin@macadamforbes.com)

**Greg Burpee**  
503.972.7282  
[burpee@macadamforbes.com](mailto:burpee@macadamforbes.com)

3611 SW Hood Avenue

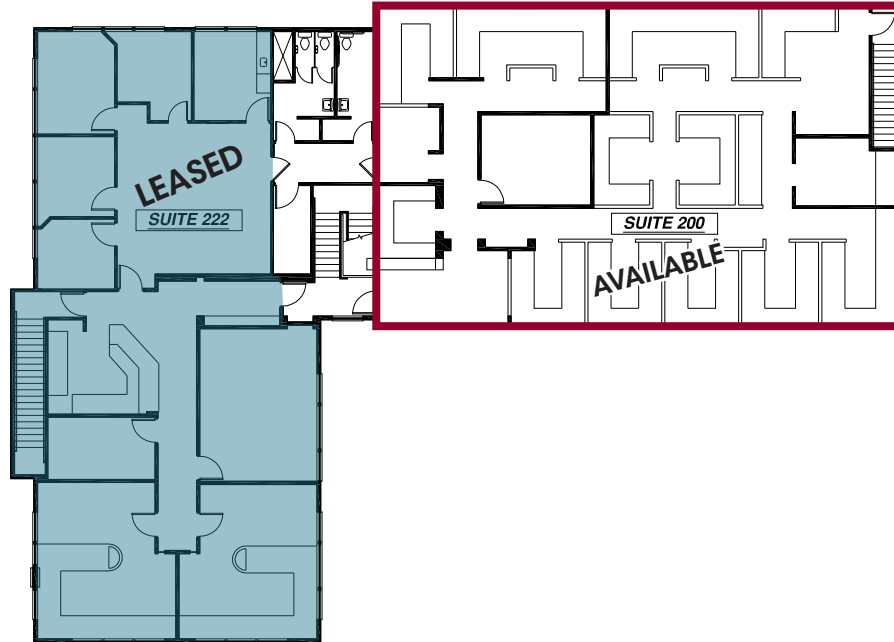
Portland, Oregon

FOR SALE

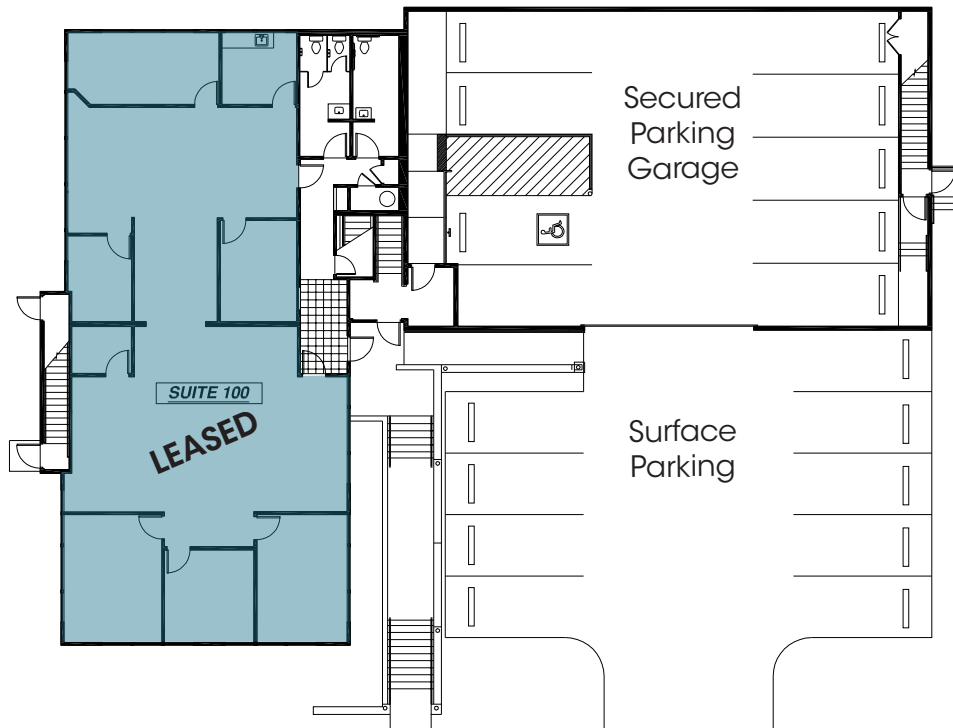


## FLOOR PLANS

### Second Floor



### Ground Floor



**Colin Russell**  
503.972.7295  
colin@macadamforbes.com

**Greg Burpee**  
503.972.7282  
burpee@macadamforbes.com

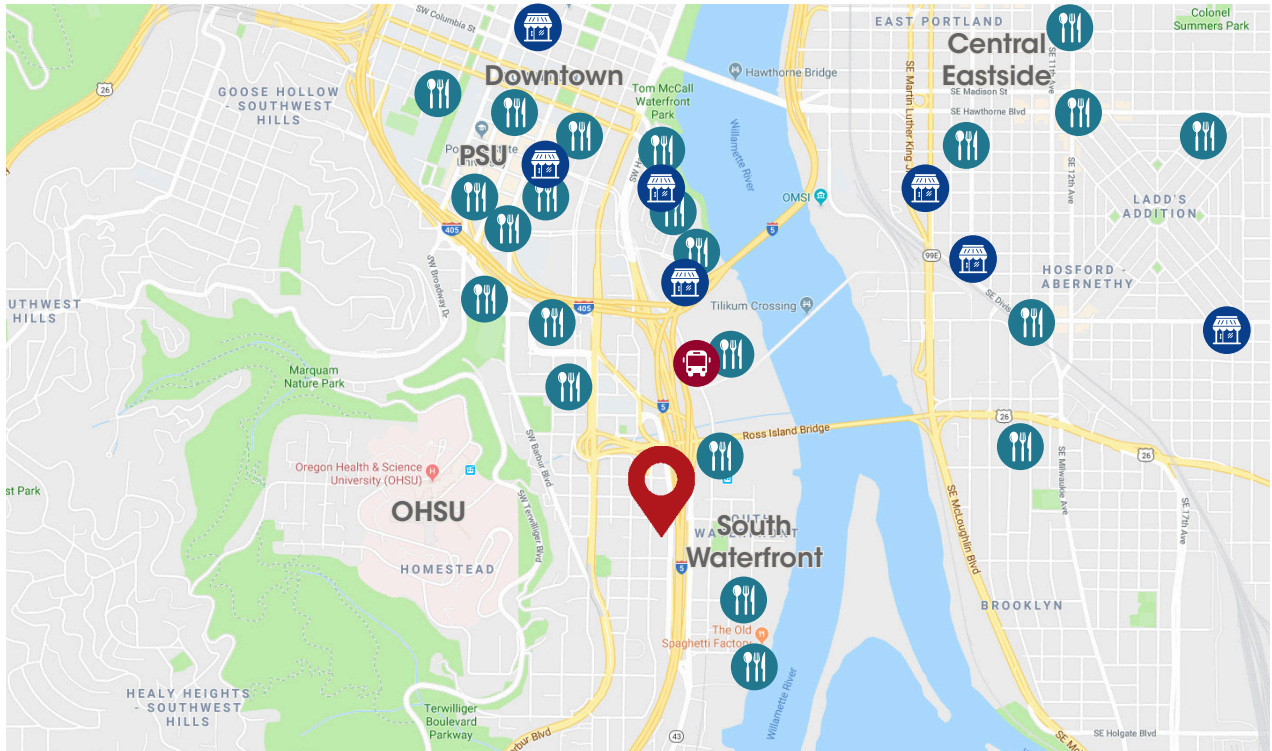
# 3611 SW Hood Avenue

Portland, Oregon

# FOR SALE



## LOCATION



## DEMOGRAPHICS

	1 Mile	3 Miles
Population	13,964	179,054
Households	7,870	92,915
Median HH Income	\$69,350	\$63,098
Pop. Growth '17-'22	↑7.2%	↑6.7%
HH Growth '17-'22	↑7.4%	↑6.9%



**Colin Russell**  
503.972.7295  
colin@macadamforbes.com

**Greg Burpee**  
503.972.7282  
burpee@macadamforbes.com