

# ARCTIC COMMONS, BUILDING A

6020 SW Arctic Drive, Beaverton, Oregon



FOR  
SUBLEASE



## PROPERTY DESCRIPTION

### AVAILABLE SPACE

Suite A: 4,492 SF office  
\$5,989 NNN

### PARKING

19 surface spaces

### ESTIMATED NNN'S

\$0.35/SF

Tenant is responsible for own utilities which are metered separately

### YEAR BUILT

2006

Exterior of building recently painted and parking lot recoated and striped July 2017

### LEASE EXPIRATION

Master lease for Suite A expires September 2020



1800 SW First Avenue, Suite 650 | Portland OR 97201 | [WWW.MACADAMFORBES.COM](http://WWW.MACADAMFORBES.COM) | 503.227.2500

**Brett Bayne**

503.972.7280

[bayne@macadamforbes.com](mailto:bayne@macadamforbes.com)

**Stu Peterson, SIOR**

503.972.7288

[stu@macadamforbes.com](mailto:stu@macadamforbes.com)

6020 SW Arctic Drive

Beaverton, Oregon

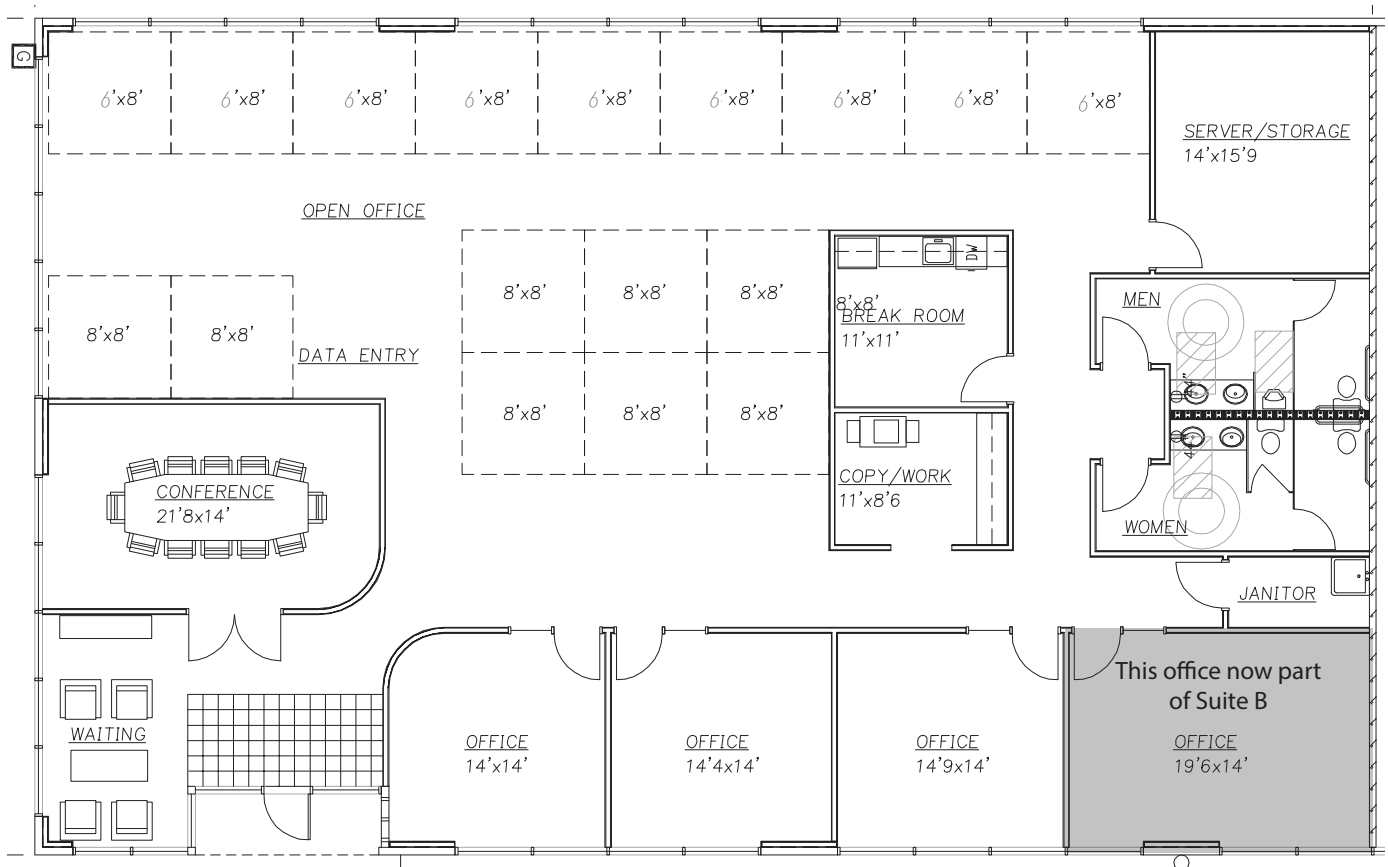
FOR **SUBLEASE**



## FEATURES

- Available space includes beautifully built out work areas including privates, conference rooms, ADA restrooms and a breakroom
- Cubicles and furniture included with Suite B
- Potential plug-n-play with existing office furniture and cubicles with Suite A
- Open floor plan configuration includes some private offices
- High ceilings and abundant glass line
- Located in a quality business park

### Suite A - 4,492 SF



**Brett Bayne**  
503.972.7280  
bayne@macadamforbes.com

**Stu Peterson, SIOR**  
503.972.7288  
stu@macadamforbes.com



# 6020 SW Arctic Drive

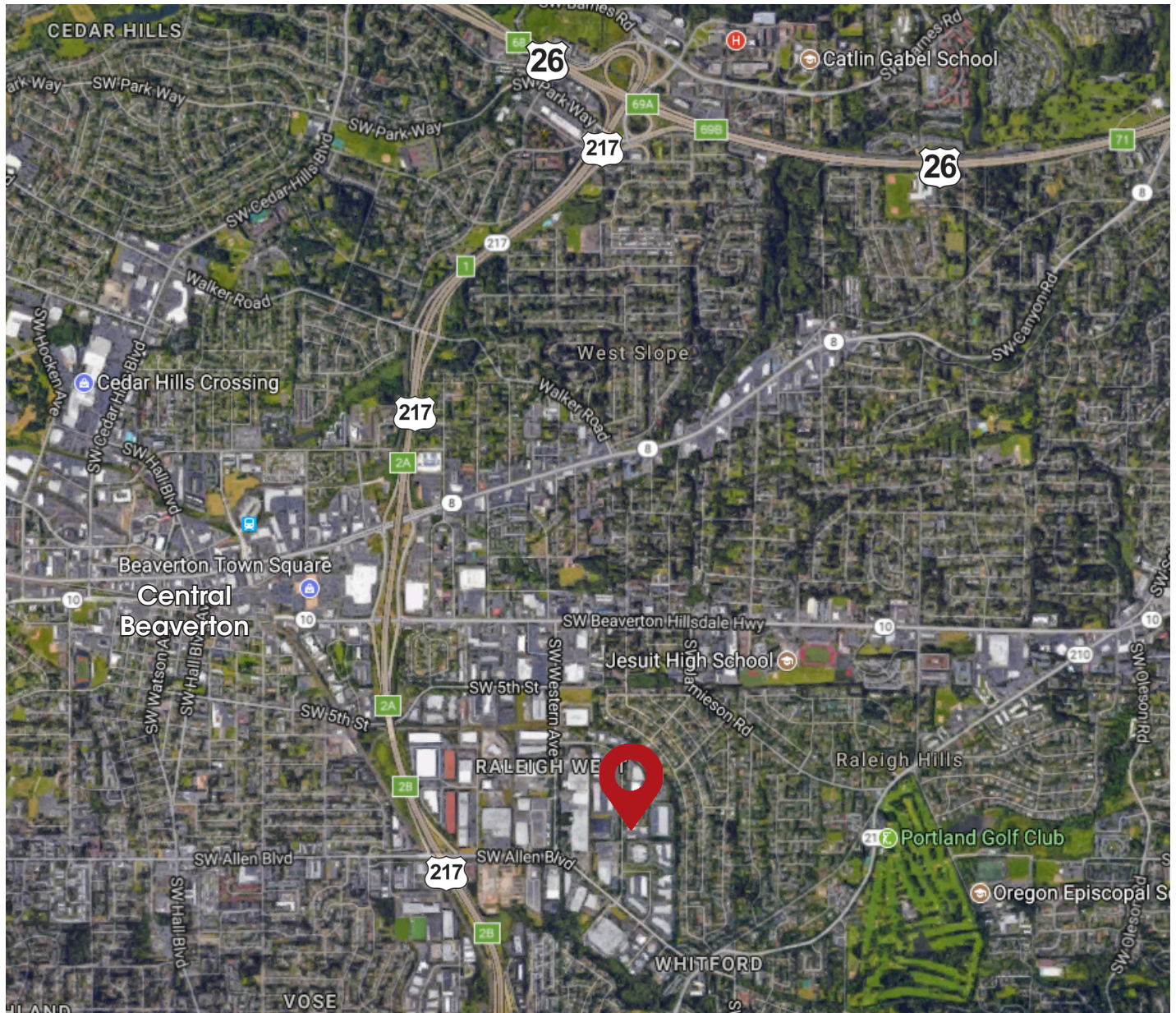
Beaverton, Oregon

# FOR SUBLEASE



## LOCATION

- Easy access to Highway 217 and Highway 26 via Allen Blvd.
- Close to amenities in Central Beaverton



**Brett Bayne**  
503.972.7280  
bayne@macadamforbes.com

**Stu Peterson, SIOR**  
503.972.7288  
stu@macadamforbes.com