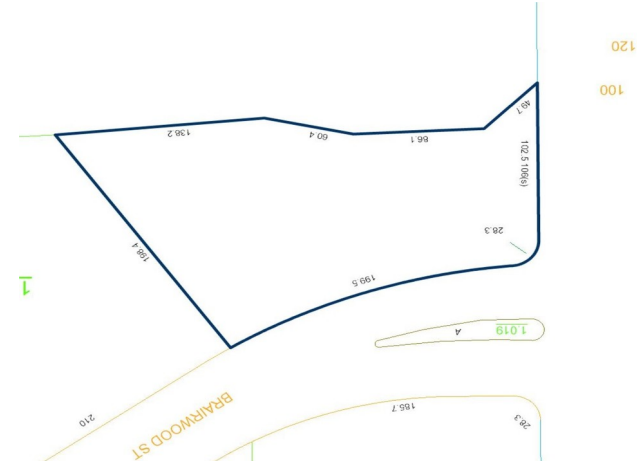


MCQUEEN SMITH RD. & BRAIRWOOD

481 MCQUEEN SMITH RD, PRATTVILLE, AL 36066

Executive Summary



OFFERING SUMMARY

Sale Price: \$199,500

Lot Size: 0.8 Acres

Zoning: Commercial Office

Price / Acres: \$249,375

PROPERTY HIGHLIGHTS

- PRICE REDUCED
- 0.3 MILE FROM COBBS FORD RD.
- 1.3 MILES FROM HWY 14
- 2.0 MILES FROM I-65
- GREAT VISIBILITY
- A GREAT LOCATION FOR RETAIL OR OFFICE
- TRAFFIC COUNTS 18,100± AADT

DEMOGRAPHICS

	1 MILE	3 MILES	5 MILES
Total Households	1846	9995	18507
Total Population	4909	26470	49289
Average HH Income	\$72,925	\$67,211	\$65,704

STEVE HUGHES, CCIM

334.386.2437
Steve@moorecompanyrealty.com

MOORE COMPANY REALTY

312 Catoma St #200, Montgomery, AL 36104
334.262.1958 | moorecompanyrealty.com

SITE SOURCE
REAL ESTATE NETWORK

MOORE
MANAGEMENT | BROKERAGE | CONSULTING

MCQUEEN SMITH RD. & BRAIRWOOD

481 MCQUEEN SMITH RD, PRATTVILLE, AL 36066

Retail Map



STEVE HUGHES, CCIM

334.386.2437

Steve@moorecompanyrealty.com

MOORE COMPANY REALTY

312 Catoma St #200, Montgomery, AL 36104

334.262.1958 | moorecompanyrealty.com

