

For Sale

Land

5.185 Acres | \$1,700,000

Miccosukee Hills

Greater Brandt Hills

Hi-Lo/Ty Ty

Meadowbrook

Mahan Drive

Capital Circle NE

Perkins

verizon

Publix

Academy
Sports & Outdoors

Meat

Jimmy
John's

BURGER
KING

WELLS
FARGO

BIG
LOTS!

LAZARUS
Telcel

McDonald's

Applebees

COSTCO
WHOLESALE

Best
Buy

Walmart
Save money. Live better.

Mahan Drive & Riggins

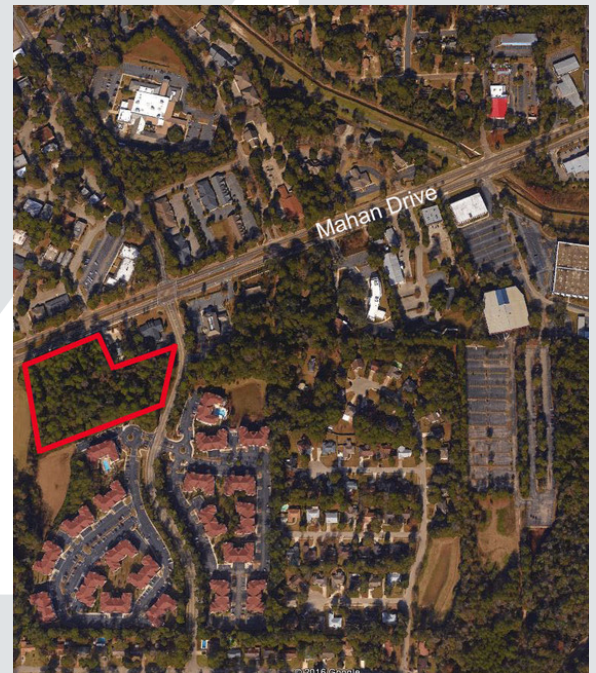
Tallahassee, Florida 32308

Property Highlights

Property Description

This property has 300' +/- of frontage on Mahan Drive and 268' +/- on Riggins Road.

Sale Price: \$1,700,000



For more information

E. Edward Murray, Jr., SIOR, CCIM

O: 850 224 2300 | C: 850 224 2300
murray@talcor.com

John W. McNeill, SIOR

O: 850 224 2300 | C: 850 251 5504
jmcneill@talcor.com



NO WARRANTY OR REPRESENTATION, EXPRESS OR IMPLIED, IS MADE AS TO THE ACCURACY OF THE INFORMATION CONTAINED HEREIN, AND THE SAME IS SUBMITTED SUBJECT TO ERRORS, OMISSIONS, CHANGE OF PRICE, RENTAL OR OTHER CONDITIONS, PRIOR SALE, LEASE OR FINANCING, OR WITHDRAWAL WITHOUT NOTICE, AND OF ANY SPECIAL LISTING CONDITIONS IMPOSED BY OUR PRINCIPALS. NO WARRANTIES OR REPRESENTATIONS ARE MADE AS TO THE CONDITION OF THE PROPERTY OR ANY HAZARDS CONTAINED THEREIN ARE ANY TO BE IMPLIED.

1018 Thomasville Road, Suite 200A,
Tallahassee, FL 32303

850 224 2300 tel

talcor.com



Parcel Map

