

# FLOOR PLAN

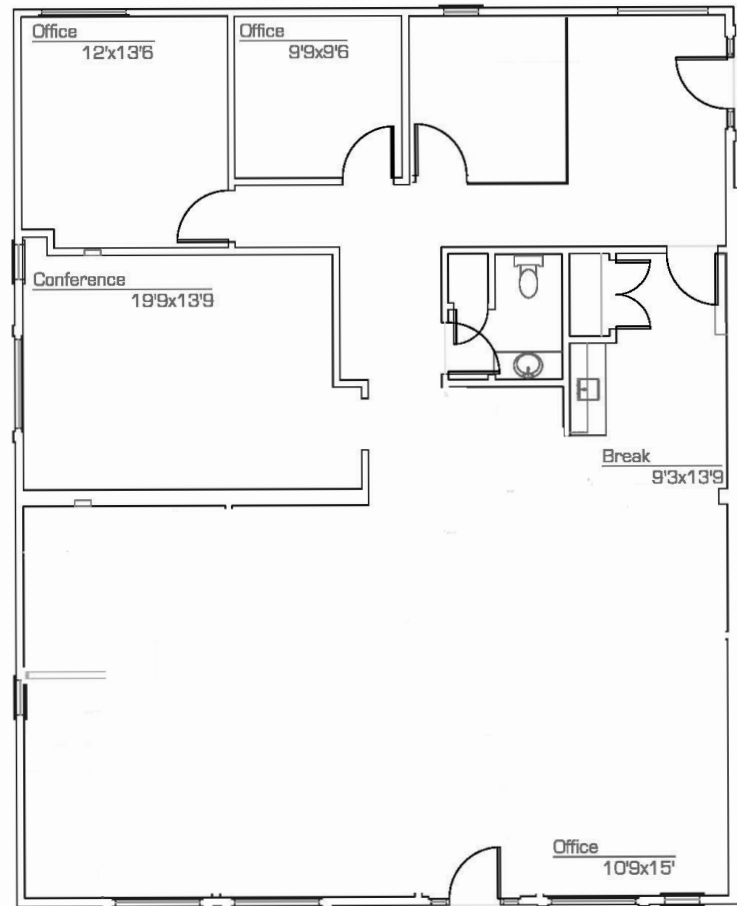
Suite 200 ±2,258 SF

**LEVROSE**  
COMMERCIAL REAL ESTATE

TCN  
COMMERCIAL  
REAL ESTATE SERVICES

4300 N MILLER COURT, SCOTTSDALE, AZ 85251

## SPECULATIVE FLOOR PLAN



### Chris Hunter

Advisor  
602.900.0597  
chunter@levrose.com

### Jason Reddington

Partner  
480.289.4504  
jreddington@levrose.com

### Keri Davies

Partner  
480.294.6572  
kdavies@levrose.com