

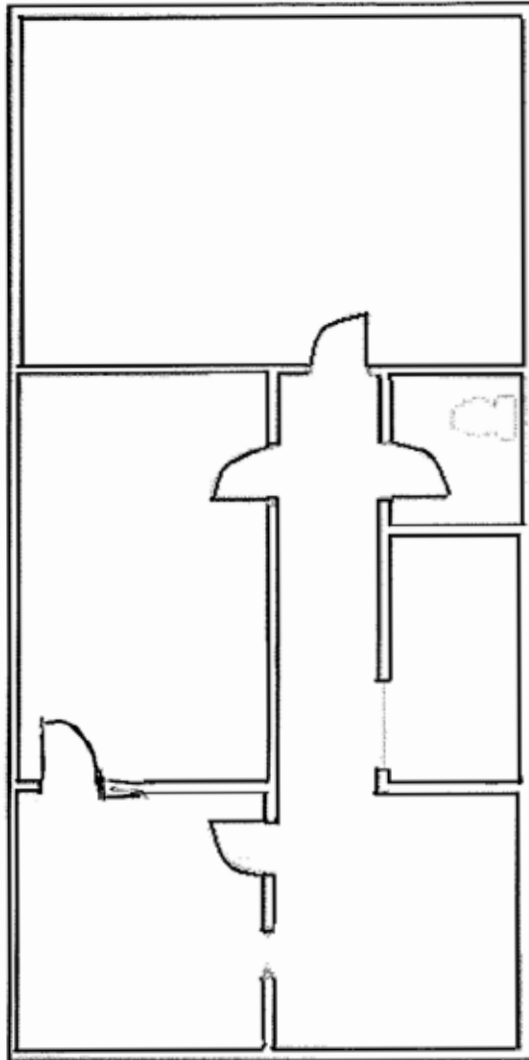
FLOOR PLAN

Suite 232 ±723 SF

LEV ROSE
COMMERCIAL REAL ESTATE

TCN
COMMERCIAL
REAL ESTATE SERVICES

4300 N MILLER COURT, SCOTTSDALE, AZ 85251



Keri Davies

Partner
480.294.6572
kdavies@levrose.com

Jason Reddington

Vice President
480.289.4504
jreddington@levrose.com

This information has been secured from sources believed to be reliable, but no representations or warranties are made, expressed or implied, as to the accuracy of the information. References to square footage are approximate. Buyer and tenant must verify the information and bears all risk for any inaccuracies. All quoted prices are subject to change without notice.