

# Berliner Law Building

224 MAIN STREET, NEVADA CITY, CA 95959

**FOR LEASE**

Office Building



## Features

- Beautifully renovated professional office building
- Ground level 450sf office suite: 2 offices & private restrooms \$950/mo
- Historic downtown Nevada City
- Spectacular Court House & downtown views
- Rents including utilities
- Parking and Comcast available at tenant cost

## Units Available

SPACE	SIZE (SF)	LEASE RATE
244 Main St, Ground Level	450 SF	\$950 per month



HIGHLAND COMMERCIAL

[www.SperryCGA.com](http://www.SperryCGA.com)



**Lock Richards**

PRESIDENT/BROKER

530.470.1740

[lock@highlandcre.com](mailto:lock@highlandcre.com)

CalDRE #01302767

Each office independently owned and operated.

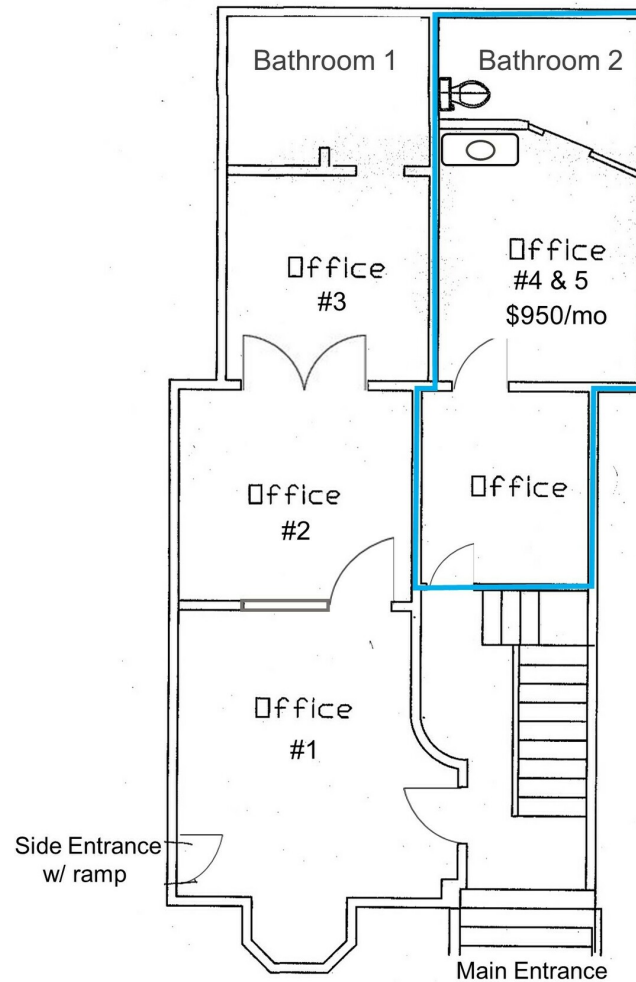
We obtained the information above from sources we believe to be reliable. However, we have not verified its accuracy and make no guarantee, warranty or representation about it. It is submitted subject to the possibility of errors, omissions, change of price, rental or other conditions, prior sale, lease or financing, or withdrawal without notice. We include projections, opinions, assumptions or estimates for example only, and they may not represent current or future performance of the property. You and your tax and legal advisors should conduct your own investigation of the property and transaction.

# Berliner Law Building

224 MAIN STREET, NEVADA CITY, CA 95959

## FOR LEASE

Office Building



Street Level



HIGHLAND COMMERCIAL

[www.SperryCGA.com](http://www.SperryCGA.com)



**Lock Richards**  
PRESIDENT/BROKER  
530.470.1740  
[lock@highlandcre.com](mailto:lock@highlandcre.com)  
CalDRE #01302767

Each office independently owned and operated.

We obtained the information above from sources we believe to be reliable. However, we have not verified its accuracy and make no guarantee, warranty or representation about it. It is submitted subject to the possibility of errors, omissions, change of price, rental or other conditions, prior sale, lease or financing, or withdrawal without notice. We include projections, opinions, assumptions or estimates for example only, and they may not represent current or future performance of the property. You and your tax and legal advisors should conduct your own investigation of the property and transaction.