

FOR LEASE

## Former Walgreens

27714 Clinton Keith Road | Murrieta, CA



## Overview

## LEASE RATE

Contact Broker

## AVAILABLE SF

14,550 SF



## Description

High visibility standalone building located along on outparcel leading to Target Shopping Center

- Term available through 10/31/2034.
- For more information visit WAGDISPO.com

## Nearby Retailers



## Demographics

	1 MILE	2 MILE	3 MILE
Income	\$134,403	\$114,566	\$105,258
Households	10,325	31,829	80,170

Year: 2019 | Source: Esri

## Contact

## TERRISON QUINN

949.698.1107 | terrison.quinn@srsre.com  
CA License No. 01789657

## ADAM HANDFIELD

949.698.1109 | adam.handfield@srsre.com  
CA License No. 01959419

## Traffic Counts

Clinton Keith Road	approx. 27,300 cars per day VPD
I-215 Freeway	approx. 90,000 cars per day VPD

Year: 2018 | Source: Costar

SRS REAL ESTATE PARTNERS | 610 Newport Center Drive, Suite 1500 | Newport Beach, CA 92660 | 949.698.1100

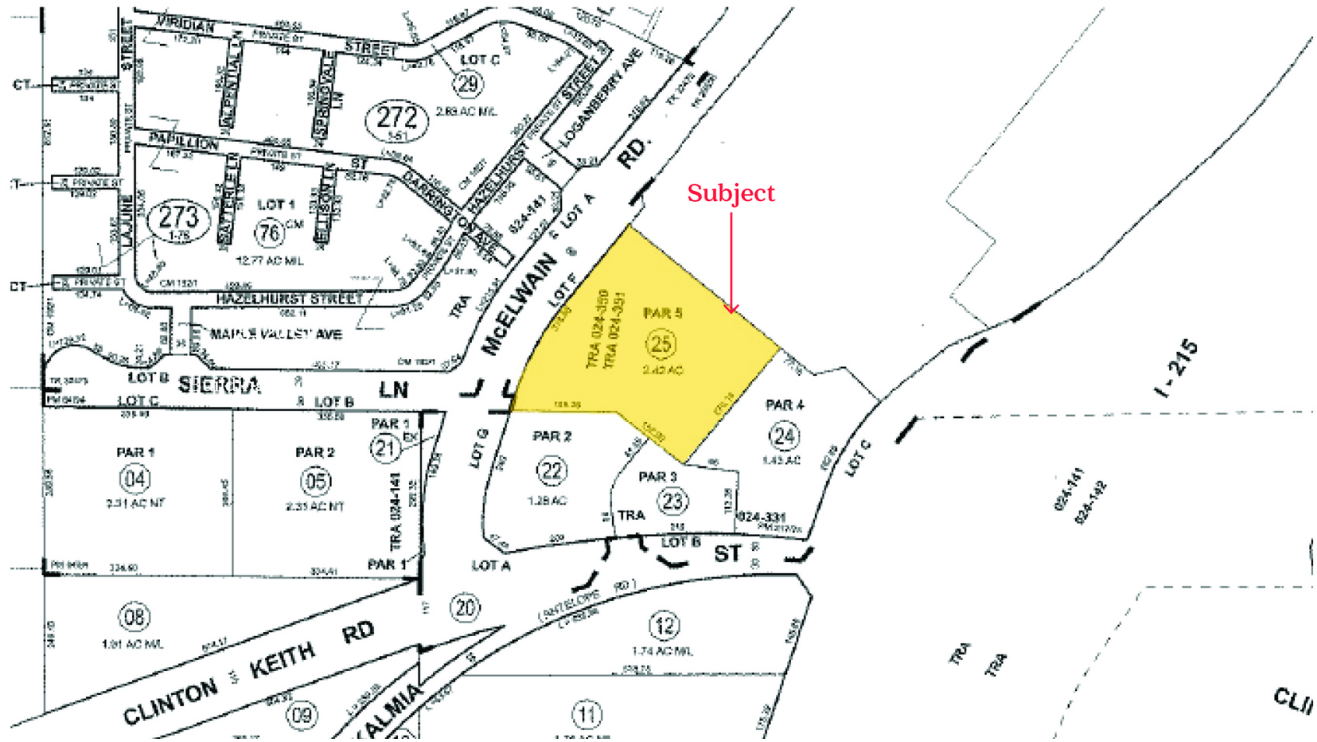
This information contained herein was obtained from sources deemed to be reliable; however SRS Real Estate Partners makes no guarantees, warranties or representations as to the completeness or accuracy thereof.

SRSRE.COM

# Former Walgreens

27714 Clinton Keith Road | Murrieta, CA

Parcel: 392-270-034  
Land: 1.54 AC, 67,082 SF  
GLA: 14,550 SF





# Former Walgreens

27714 Clinton Keith Road | Murrieta, CA

