

HOLLYWOOD STATION

4224 NE Halsey Street, Portland, Oregon



FOR LEASE



PROPERTY DESCRIPTION

AVAILABLE SPACE

Suite 340: 3,670 SF

AVAILABLE

September 1, 2018

PARKING

3/1,000 SF

LEASE RATE

\$30/SF Full Service



FEATURES

- Class A office space with above standard finishes
- Mixed-Use Development anchored by 24 Hour Fitness
- Free parking in a four story parking garage
- Other tenants in building include Century Link, and physical therapy and dental practices



Kevin VandenBrink

503.972.7289

kevinv@macadamforbes.com

Seth Platsman

503.416.0091

seth@macadamforbes.com

1800 SW First Avenue, Suite 650 | Portland OR 97201 | WWW.MACADAMFORBES.COM | 503.227.2500

4224 NE Halsey Street

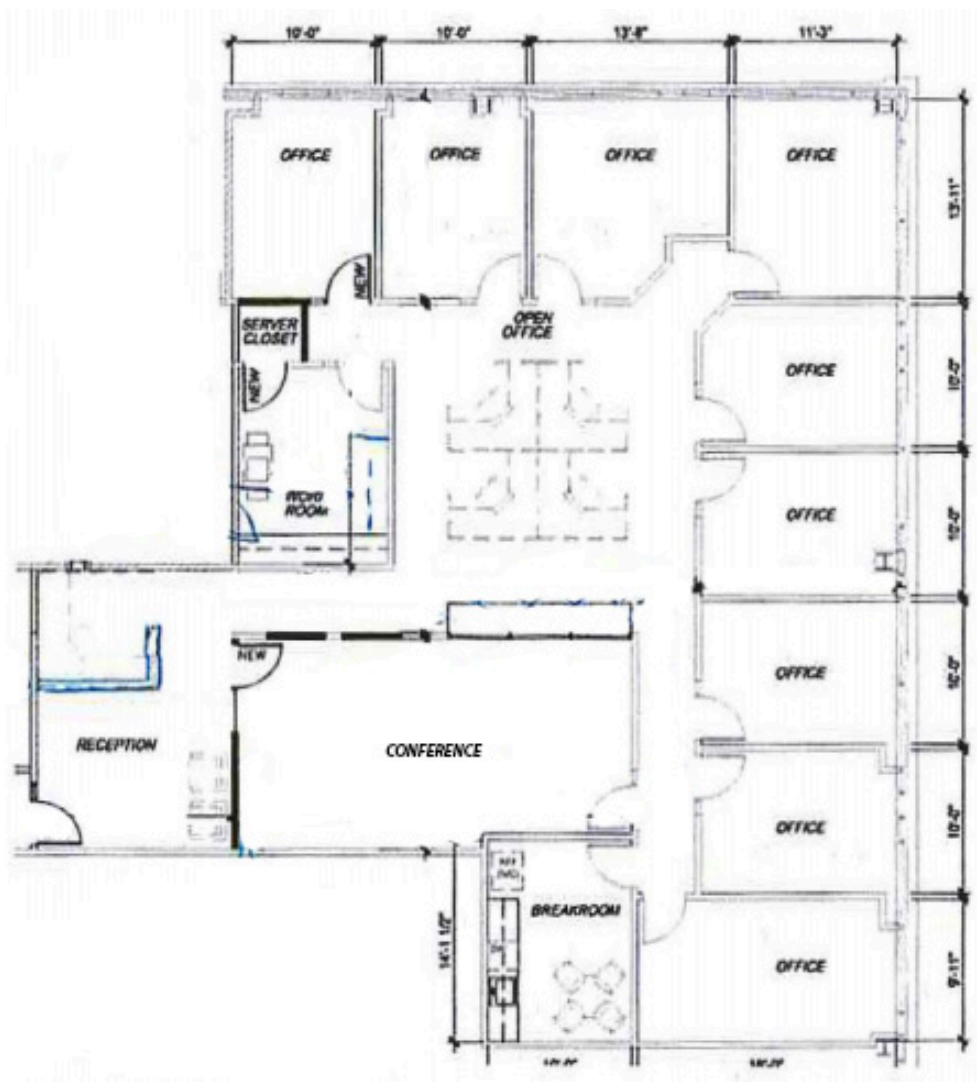
Portland, Oregon

FOR LEASE

BUILD OUT

- 9 private offices
- Conference room
- Breakroom
- IT room
- Reception area
- Open work area for 4-6 cubes

FLOOR PLAN



Kevin VandenBrink
503.972.7289
kevinv@macadamforbes.com

Seth Platsman
503.416.0091
seth@macadamforbes.com

4224 NE Halsey Street

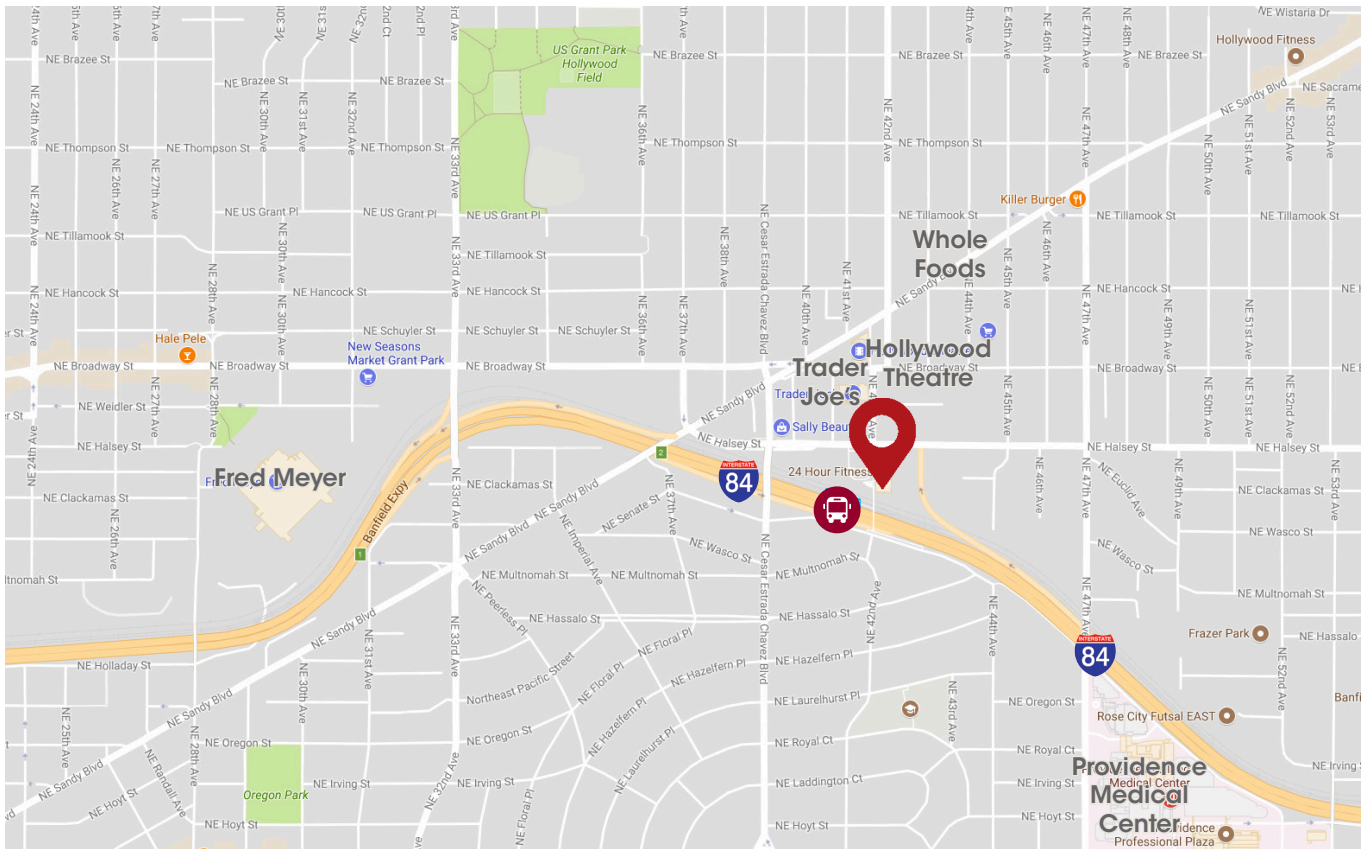
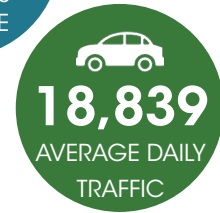
Portland, Oregon

FOR LEASE



LOCATION

- Located in the heart of Portland's Hollywood District
- Minutes away from Downtown Portland and the Portland Airport
- Immediate access to I-84
- Adjacent to Hollywood Transit Center with quick access to the MAX Red, Blue and Green Lines and TriMet buses
- Surrounded by shopping and restaurant amenities
- Close proximity to Providence Medical Center



Kevin VandenBrink
503.972.7289
kevinv@macadamforbes.com

Seth Platsman
503.416.0091
seth@macadamforbes.com