

FOR LEASE



ATLANTA WEST BUSINESS CENTER | ± 2,144 - 3,534 SF | 1064

- ## LOCATION OVERVIEW

A Google Map of Atlanta, Georgia, showing a blue location pin in the central business district. The map includes major highways like I-75, I-285, and I-20, and labels for areas like Smyrna, Vinings, Buckhead, and Midtown. The Google logo and "Map data ©2024 Google" are visible at the bottom.



BULLREALTY.COM

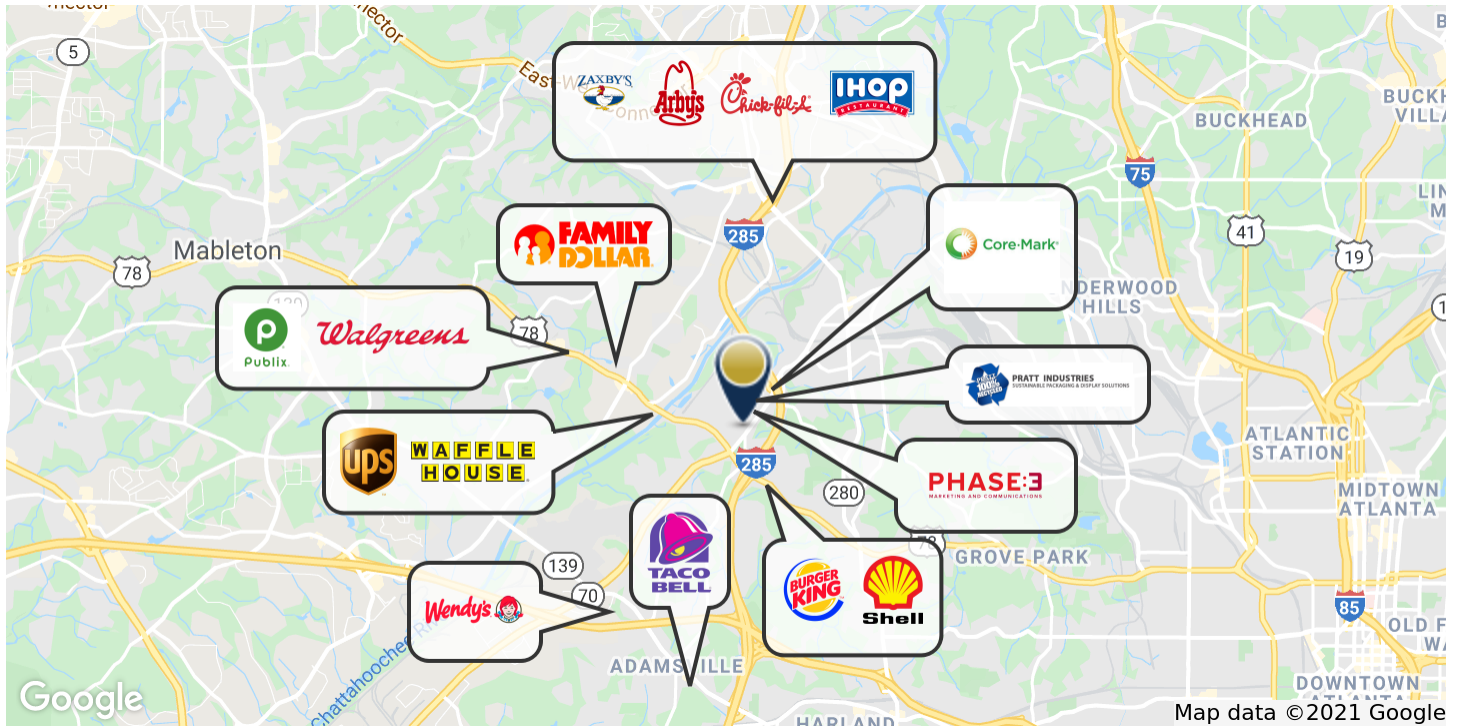
Information contained herein may have been provided by the seller, landlord or other outside sources. While deemed reliable, it may be estimated, projected, limited in scope and is subject to change or inaccuracies. Pertinent information should be independently confirmed prior to lease or purchase offer or within an applicable due diligence period.

ATLANTA WEST BUSINESS CENTER | ± 4,270 - 26,019 SF

3201 ATLANTA INDUSTRIAL PKWY NW

ATLANTA, GA 30331

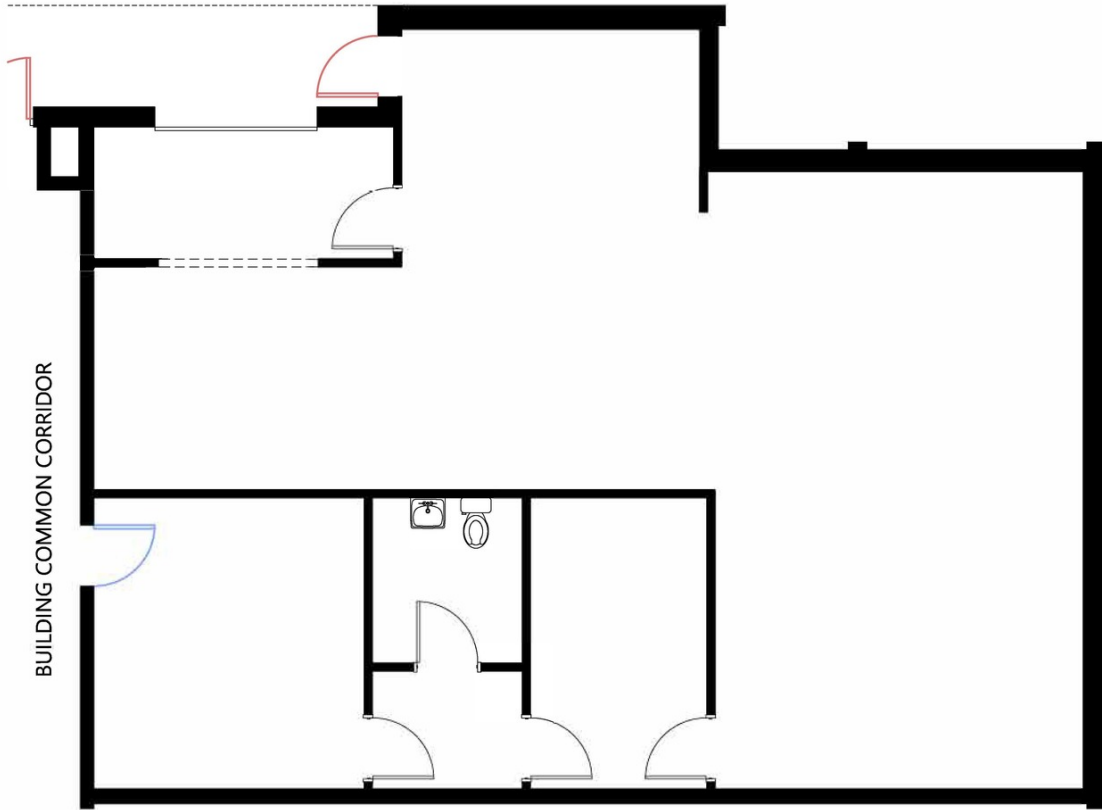
FOR LEASE



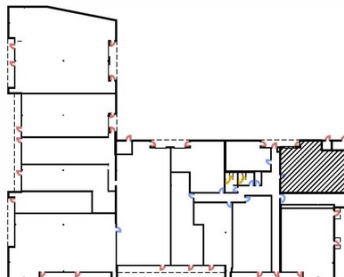
ATLANTA WEST BUSINESS CENTER | ± 2,144 - 5,678 SF
3201 ATLANTA INDUSTRIAL PKWY NW
ATLANTA, GA 30331

FOR LEASE

ATLANTA WEST BUSINESS CENTER | ± 2,144 - 5,678 SF | Georgia | 304



0 4' 8' 16'
2,144 RSF
10/10/2022



SEAN WILLIAMS | 404-876-1640 x126 | Sean@BullRealty.com

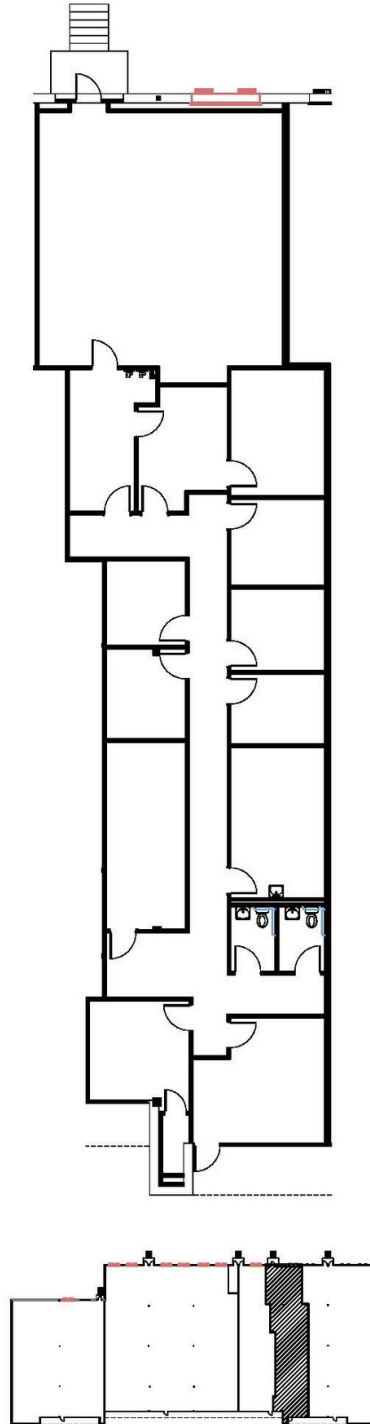
BULLREALTY.COM

Information contained herein may have been provided by the seller, landlord or other outside sources. While deemed reliable, it may be estimated, projected, limited in scope and is subject to change or inaccuracies. Pertinent information should be independently confirmed prior to lease or purchase offer or within an applicable due diligence period.

ATLANTA WEST BUSINESS CENTER | ± 2,144 - 5,678 SF
3201 ATLANTA INDUSTRIAL PKWY NW
ATLANTA, GA 30331

FOR LEASE

ATLANTA WEST BUSINESS CENTER | ± 2,144 - 5,678 SF | Georgia | 404



0 4' 8' 16'
3,534 RSF
10/10/2022



SEAN WILLIAMS | 404-876-1640 x126 | Sean@BullRealty.com

BULLREALTY.COM

Information contained herein may have been provided by the seller, landlord or other outside sources. While deemed reliable, it may be estimated, projected, limited in scope and is subject to change or inaccuracies. Pertinent information should be independently confirmed prior to lease or purchase offer or within an applicable due diligence period.