

FOR LEASE

## Former Rite Aid - Kennesaw Due W Rd, Kennesaw, GA

1550 Kennesaw Due West Rd NW | Kennesaw, GA



## Overview

BUILDING SIZE	Fully Leased
LEASE END DATE	11/30/2024
RATE	Contact Broker



## Description

Former Rite Aid building

- Close proximity between 4 grade schools
- Located at lighted intersection
- Average income is \$128,394 within a 1 mile radius

## Demographics

	1 MILE	3 MILES	5 MILES
Median HH Income	\$101,591	\$84,735	\$79,229
Average HH Income	\$128,394	\$111,789	\$104,335
Households	2,438	18,745	54,453
Current Population	7,562	51,812	148,726

Year: 2018 | Source: ESRI

## Contact

SCOTT TIERNAN

678.420.1385 | scott.tiernan@srsre.com

## Traffic Counts

Kennesaw Due W Rd	16,100 VPD
Stilesboro Rd	27,800 VPD

Year: 2016 | Source: GDOT

SRS REAL ESTATE PARTNERS | 3445 Peachtree Road NE, Suite 950 | Atlanta, GA 30326 | 404.231.2232

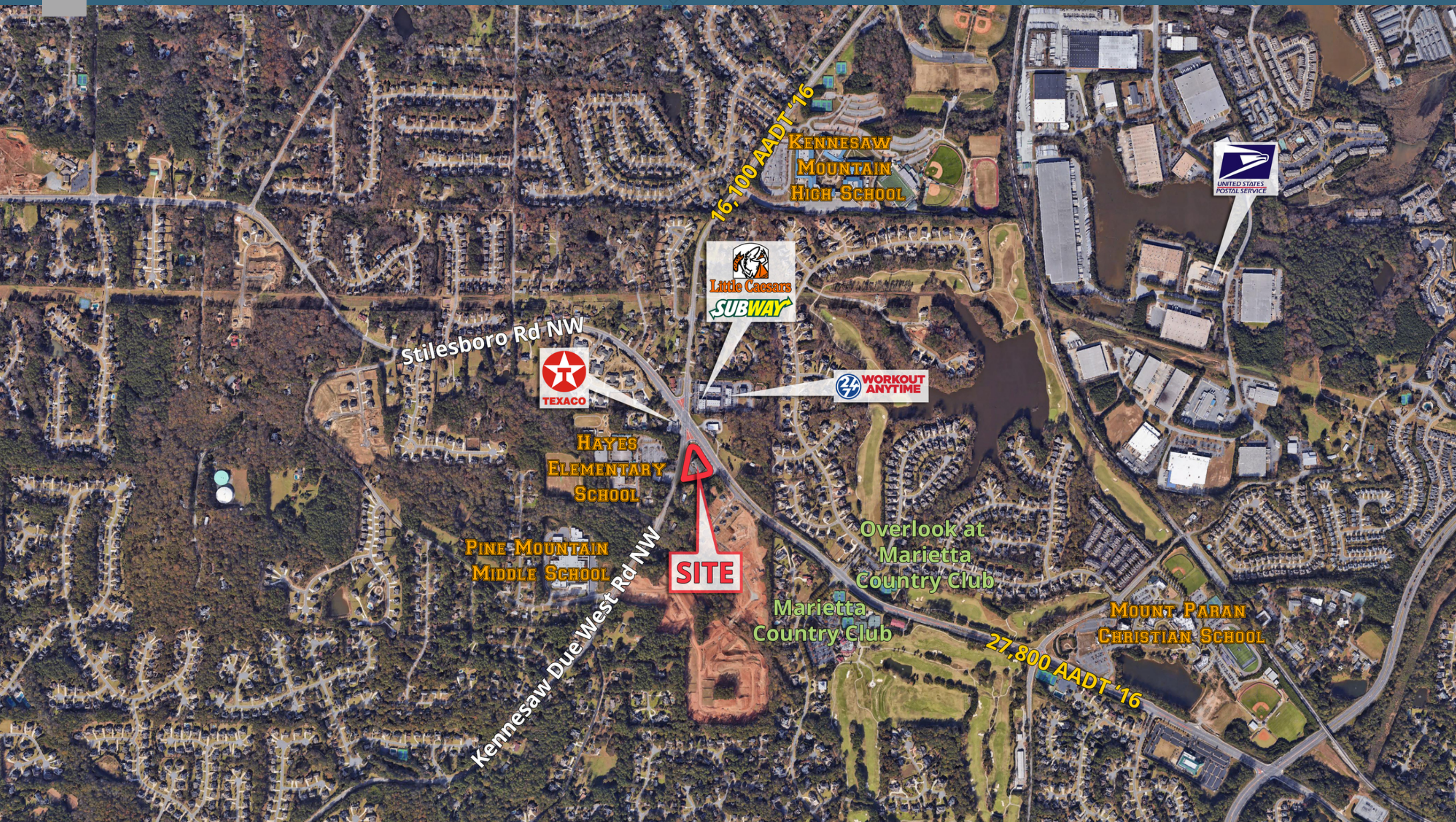
This information contained herein was obtained from sources deemed to be reliable; however SRS Real Estate Partners makes no guarantees, warranties or representations as to the completeness or accuracy thereof.

SRSRE.COM



# Former Rite Aid - Kennesaw Due W Rd, Kennesaw, GA

1550 Kennesaw Due West Rd NW | Kennesaw, GA





## Former Rite Aid - Kennesaw Due W Rd, Kennesaw, GA

1550 Kennesaw Due West Rd NW | Kennesaw, GA



## Former Rite Aid - Kennesaw Due W Rd, Kennesaw, GA

1550 Kennesaw Due West Rd NW | Kennesaw, GA



	1 mile	3 miles	5 miles
<b>Population</b>			
2018 Population	7,562	51,812	148,726
2000 Population	4,745	33,725	97,386
2010 Population	6,402	46,235	133,954
2023 Population	8,249	55,274	158,193
2000-2010 Annual Rate	3.04%	3.21%	3.24%
2010-2018 Population: Annual Growth Rate	2.04%	1.39%	1.28%
2018-2023 Population: Annual Growth Rate	1.75%	1.30%	1.24%
2018 Median Age	37.6	38.3	36.6
<b>Households</b>			
2000 Households	1,520	11,575	35,795
2010 Households	2,075	16,795	49,159
2018 Total Households	2,438	18,745	54,453
2023 Total Households	2,650	19,949	57,875
2000-2010 Annual Rate	3.16%	3.79%	3.22%
2010-2018 Households: Annual Growth Rate	1.97%	1.34%	1.25%
2018-2023 Households: Annual Growth Rate	1.68%	1.25%	1.23%
2018 Average Household Size	3.09	2.75	2.66
<b>Housing Units</b>			
2018 Total Housing Units	2,468	19,408	56,427
2018 Owner Occupied Housing Units	2,058	13,669	37,245
2018 Renter Occupied Housing Units	380	5,075	17,208
2018 Vacant Housing Units	30	663	1,974
<b>Race and Ethnicity</b>			
2018 White Alone	71.7%	68.8%	66.8%
2018 Black Alone	15.7%	17.8%	20.7%
2018 American Indian/Alaska Native Alone	0.2%	0.3%	0.3%
2018 Asian Alone	6.3%	5.8%	5.7%
2018 Pacific Islander Alone	0.0%	0.0%	0.0%
2018 Hispanic Origin (Any Race)	8.4%	9.8%	8.8%
<b>Income</b>			
2018 Median Household Income	\$101,591	\$84,735	\$79,229
2018 Average Household Income	\$128,394	\$111,789	\$104,335
Per Capita Income	\$42,743	\$40,708	\$38,925
<b>2018 Population 25+ by Educational Attainment</b>			
Total	5,114	35,482	99,146
High School Graduate	13.6%	16.4%	15.7%
GED/Alternative Credential	2.0%	1.7%	2.3%
Some College, No Degree	13.1%	18.7%	20.7%
Associate Degree	5.7%	7.7%	8.1%
Bachelor's Degree	38.2%	32.5%	32.1%
Graduate/Professional Degree	20.0%	16.6%	15.9%
<b>Data for all businesses in area</b>			
Total Businesses:	121	1,977	6,377
Total Employees:	1,359	24,778	83,689
Total Residential Population:	7,562	51,812	148,726
Employee/Residential Population Ratio:	0.18:1	0.48:1	0.56:1
2018 Total Daytime Population	5,014	49,211	158,545
Workers	1,454	25,304	91,258
Residents	3,560	23,907	67,287