

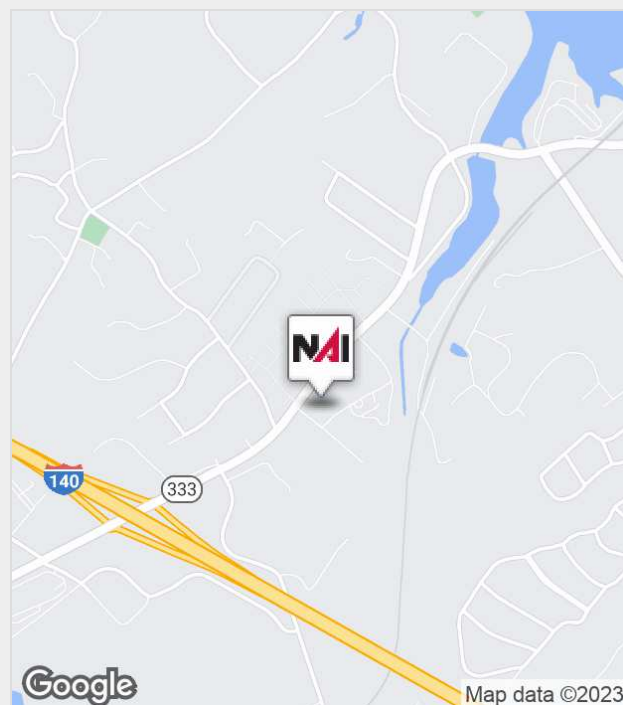


000 Central Park Blvd

Louisville, Tennessee 37777

Property Features

- Priced to sell
- Outstanding major arterial access
- Level lot
- Centrally located



For more information:

Michael Moore

+1 865 531 6400 • mmoore@koellamoore.com

NO WARRANTY OR REPRESENTATION, EXPRESS OR IMPLIED, IS MADE AS TO THE ACCURACY OF THE INFORMATION CONTAINED HEREIN, AND THE SAME IS SUBMITTED SUBJECT TO ERRORS, OMISSIONS, CHANGE OF PRICE, RENTAL OR OTHER CONDITIONS, PRIOR SALE, LEASE OR FINANCING, WITHDRAWAL WITHOUT NOTICE, OR ANY SPECIAL LISTING CONDITIONS IMPOSED BY OUR PRINCIPALS. NO WARRANTIES OR REPRESENTATIONS ARE MADE AS TO THE CONDITION OF THE PROPERTY OR ANY HAZARDS CONTAINED THEREIN. UNLESS THERE IS AN AGREEMENT STIPULATING OTHERWISE, THE AFFILIATE BROKERS OR BROKERS NAMED WITHIN REPRESENT THE OWNER OR LANDLORD.

NAI Koella | RM Moore
255 N Peters Road, Suite 101
+1 865 531 6400
www.koellamoore.com

For Sale

Quick Pellissippi Parkway Access-Affordable



Property Summary

Sale Price:	\$100,000
Lot Size:	0.83 Acres
APN #:	008164.01
Zoning:	GB-E City of Alcoa
Market:	Knoxville
Sub Market:	Blount County
Cross Streets:	Central Park and Topside

Property Overview

.83 Acres located less than 1/2 mile from Pellissippi Parkway-Topside Road exit sitting in the City of Alcoa General Business E zoning. Office, retail and light yard space uses would be ideal.

Location Overview

Centrally located lightly level topography on undeveloped acreage offered at an affordable price.

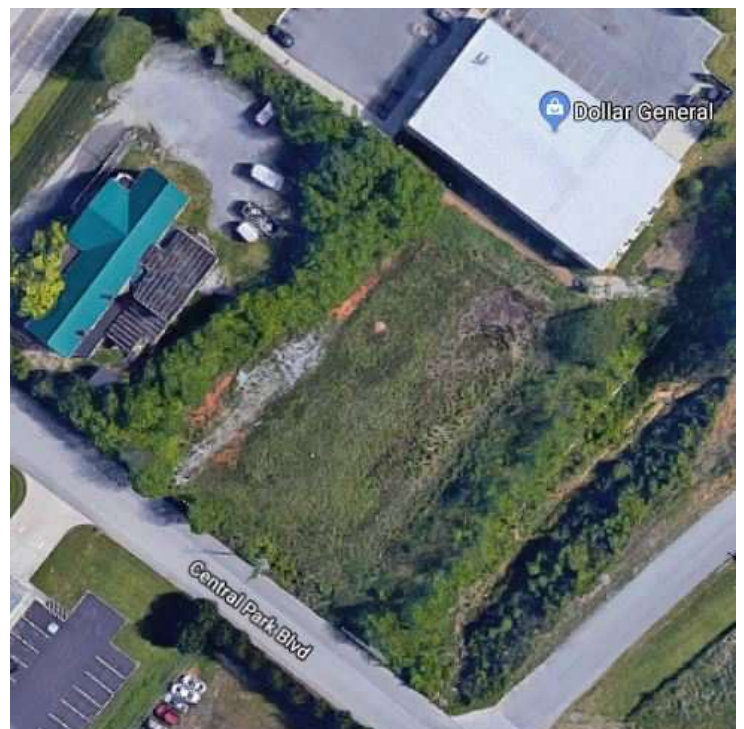
For Sale

Quick Pellissippi Parkway Access-Affordable



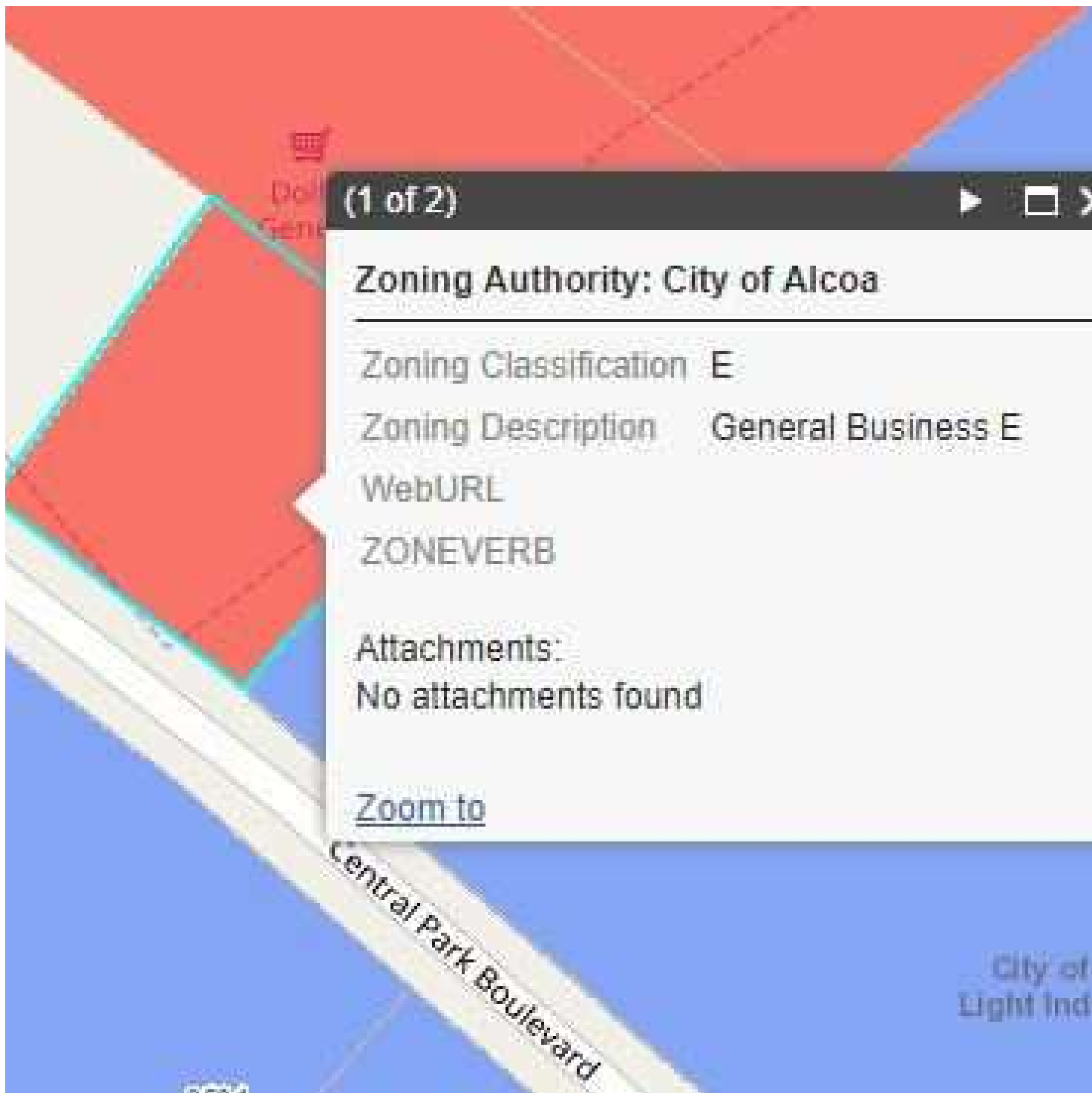
For Sale

Quick Pellissippi Parkway Access-Affordable



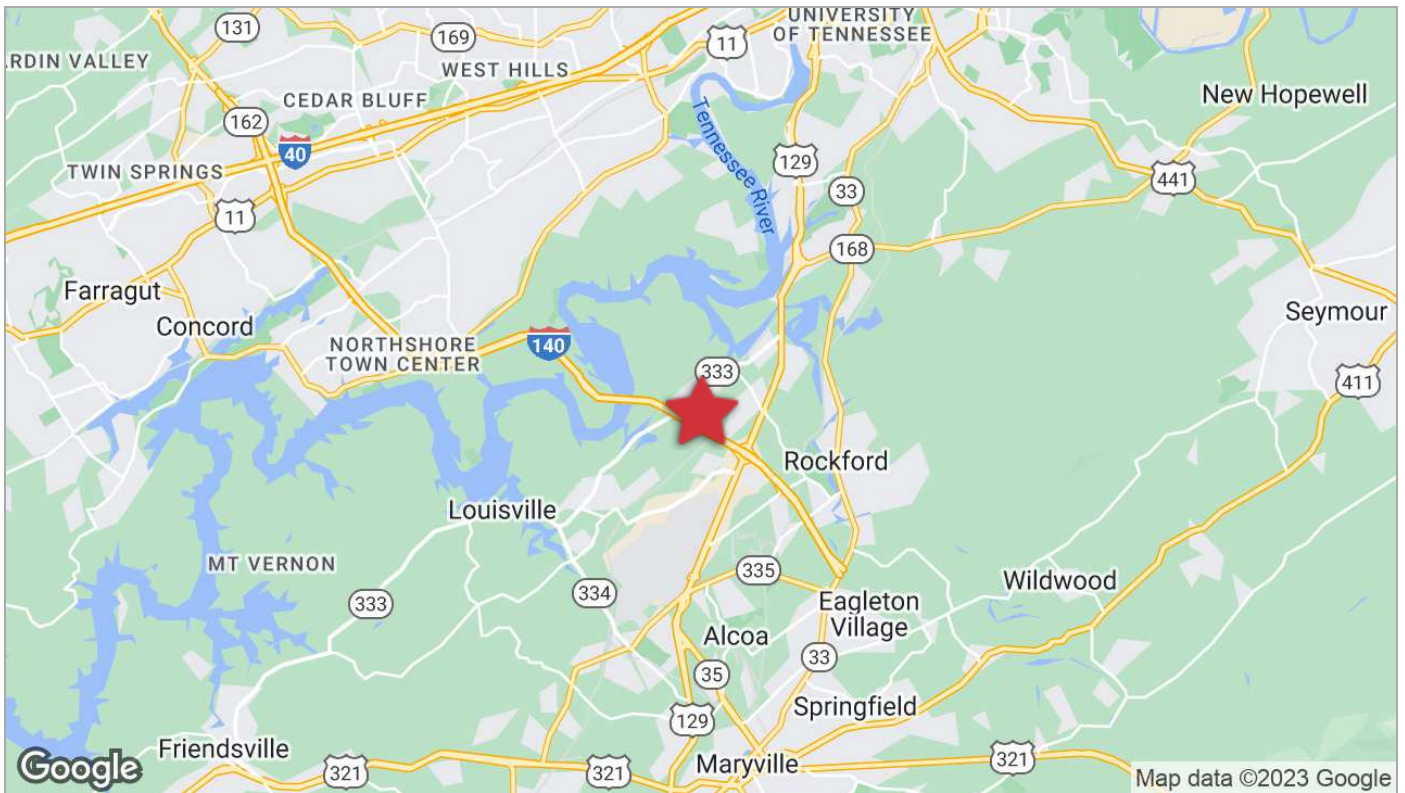
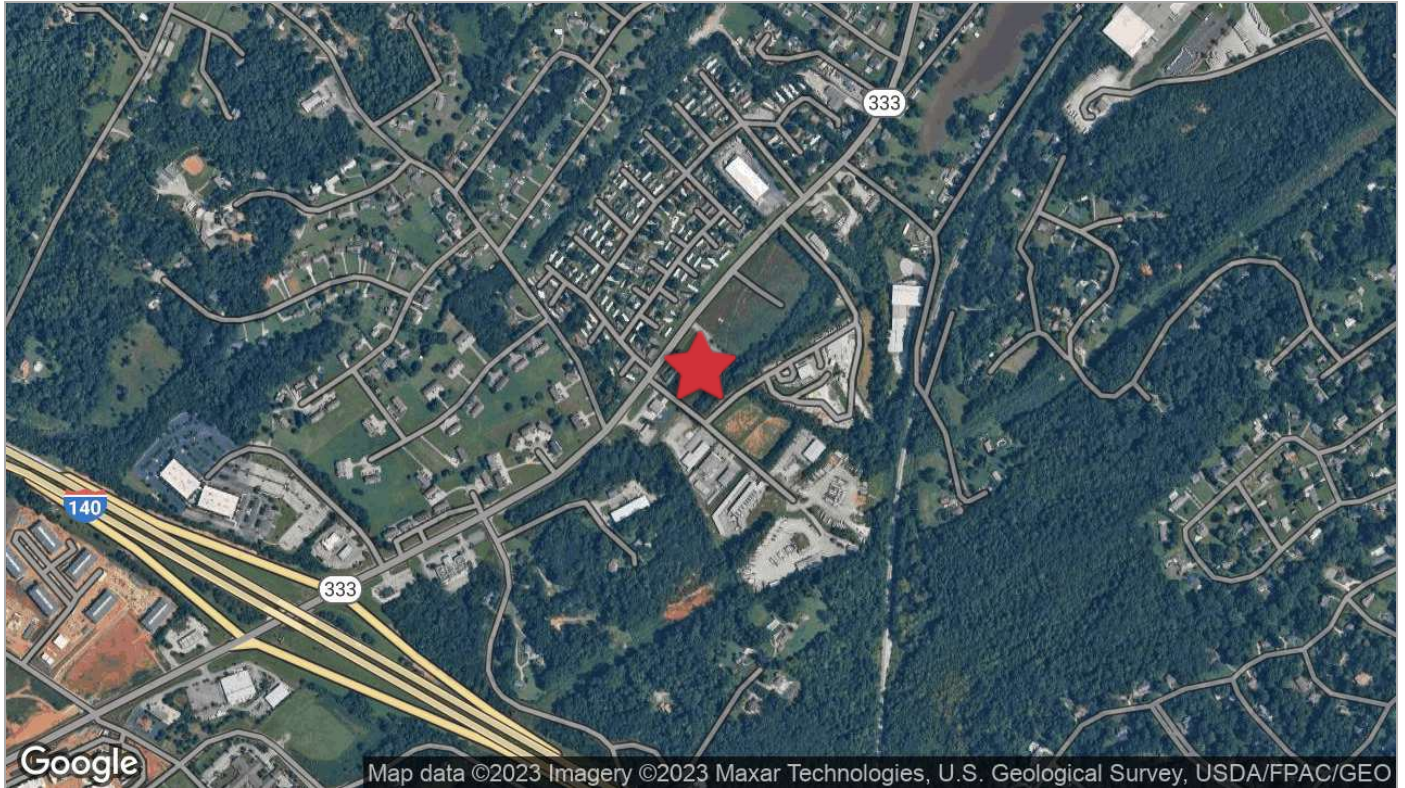
For Sale

Quick Pellissippi Parkway Access-Affordable



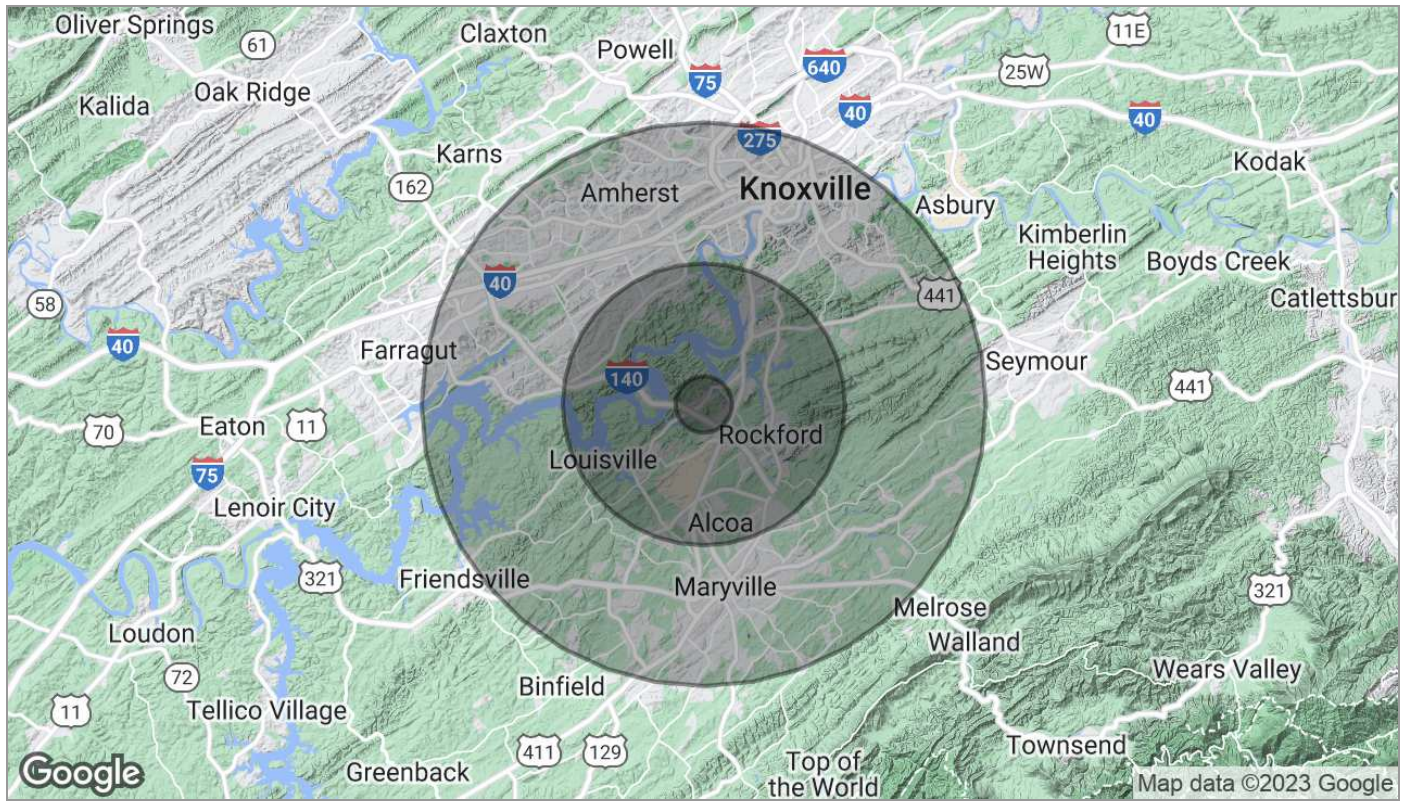
For Sale

Quick Pellissippi Parkway Access-Affordable



For Sale

Quick Pellissippi Parkway Access-Affordable



Population	1 Mile	5 Miles	10 Miles
TOTAL POPULATION	1,941	39,168	302,393
MEDIAN AGE	34.0	39.1	35.8
MEDIAN AGE (MALE)	34.1	38.5	35.0
MEDIAN AGE (FEMALE)	34.0	39.8	36.6
Households & Income	1 Mile	5 Miles	10 Miles
TOTAL HOUSEHOLDS	759	15,864	126,470
# OF PERSONS PER HH	2.6	2.5	2.4
AVERAGE HH INCOME	\$54,230	\$82,479	\$64,506
AVERAGE HOUSE VALUE	\$193,248	\$209,872	\$209,414

* Demographic data derived from 2020 ACS - US Census