

FOR SALE

3306 OLD MCDUFFIE ROAD

3306 Old McDuffie Road, Augusta, GA 30906



CONNIE WILSON, CCIM

Sr. VP, Associate Broker

cwilson@shermanandhemstreet.com

706.722.8334 x202

**SHERMAN &
HEMSTREET**
Real Estate Company

3306 Old McDuffie Road

3306 Old McDuffie Road, Augusta, GA 30906



PROPERTY DESCRIPTION

Ideal corner lot with frontage down both Barton Chapel and Old McDuffie roads. Perfect location to develop a small strip center or gas station. Property is located In between Deans Bridge and Gordon highway making it perfect distance for a smaller business both the local traffic and the daily commuters passing from home to work.

PROPERTY HIGHLIGHTS

- Good frontage on both Barton Chapel & Old McDuffie
- Great location for strip center, gas station or convenience store
- Corner location with good drainage
- Established hardwood trees on back of property

OFFERING SUMMARY

Sale Price:	\$96,000
Lot Size:	1.57 Acres

DEMOGRAPHICS

	1 MILE	3 MILES	5 MILES
Total Households	1,713	14,739	46,116
Total Population	5,107	40,754	120,992
Average HH Income	\$38,626	\$44,710	\$52,174

SHERMAN & HEMSTREET REAL ESTATE COMPANY

4316 Washington Road, Evans, GA 30809
shermanandhemstreet.com
706.722.8334

CONNIE WILSON, CCIM

cwilson@shermanandhemstreet.com
706.722.8334 x202

3306 Old McDuffie Road

3306 Old McDuffie Road, Augusta, GA 30906



SHERMAN & HEMSTREET REAL ESTATE COMPANY

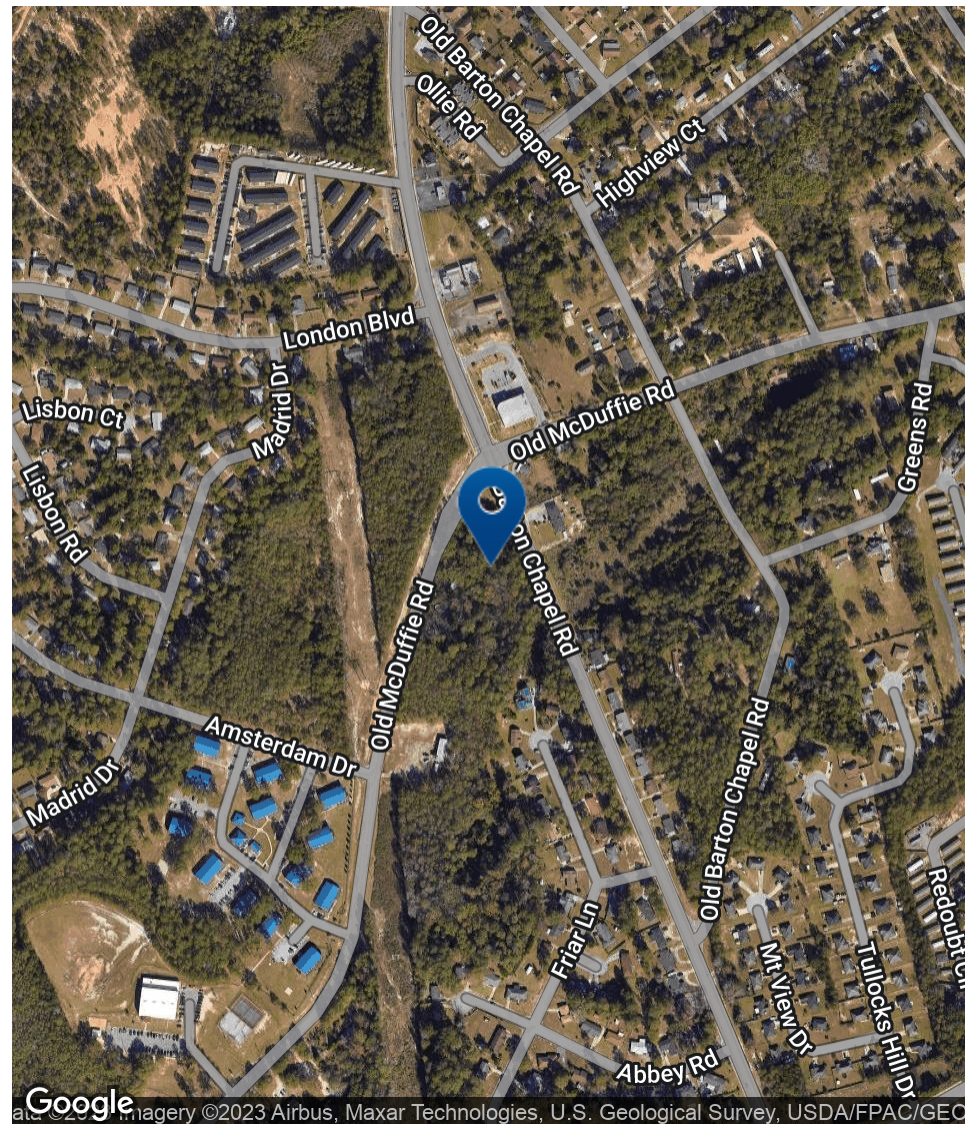
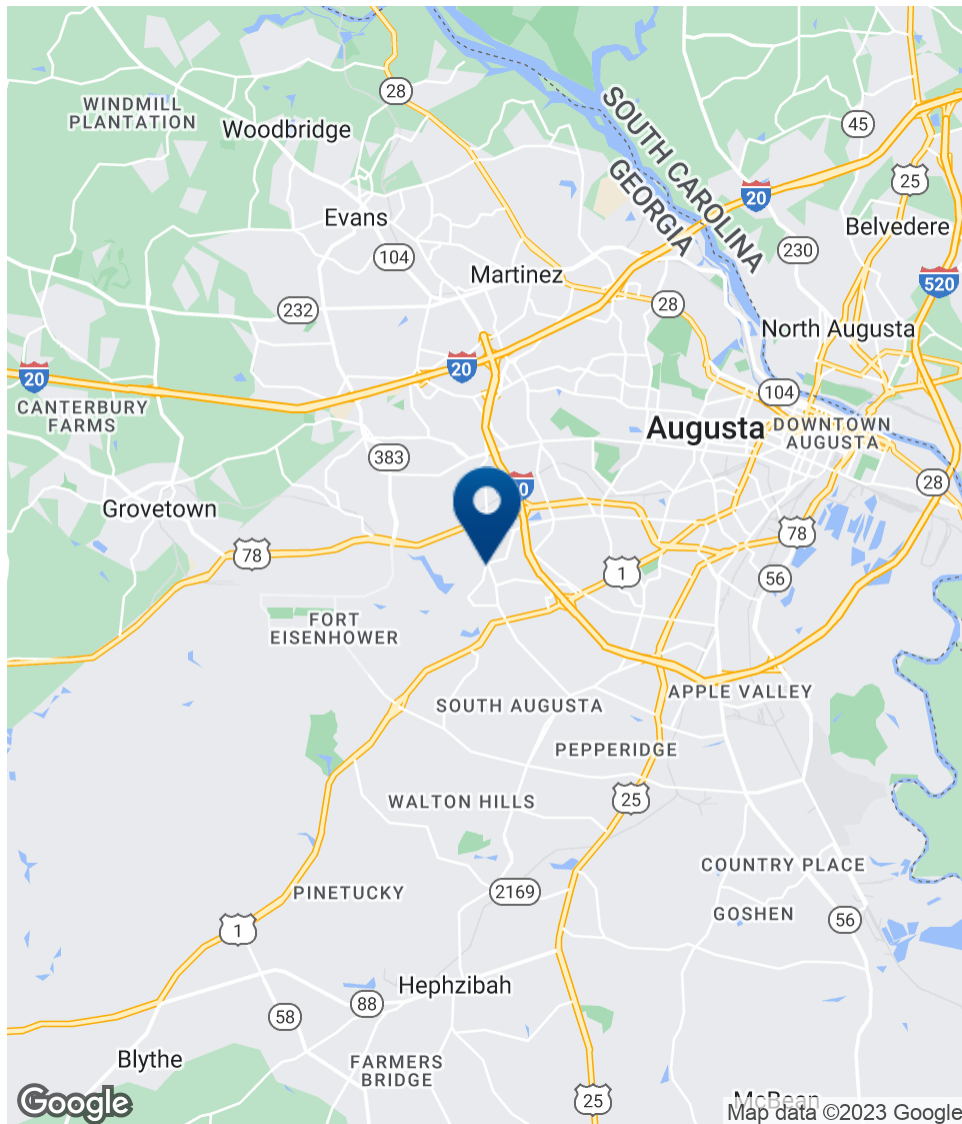
4316 Washington Road, Evans, GA 30809
shermanandhemstreet.com
706.722.8334

CONNIE WILSON, CCIM

cwilson@shermanandhemstreet.com
706.722.8334 x202

3306 Old McDuffie Road

3306 Old McDuffie Road, Augusta, GA 30906



SHERMAN & HEMSTREET REAL ESTATE COMPANY

4316 Washington Road, Evans, GA 30809
shermanandhemstreet.com
706.722.8334

CONNIE WILSON, CCIM

cwilson@shermanandhemstreet.com
706.722.8334 x202