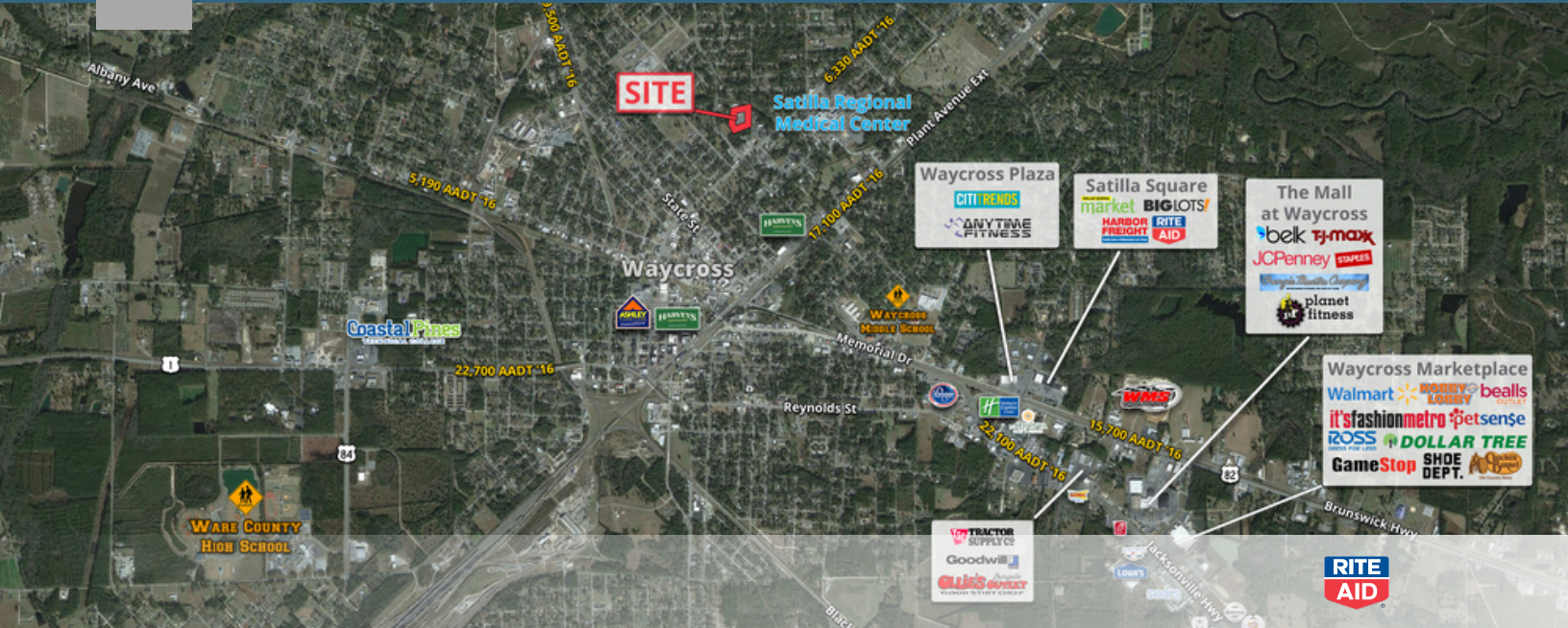


FOR LEASE

Former Rite Aid - Riverside Ave, Waycross, GA

701 Riverside Dr | Waycross, GA

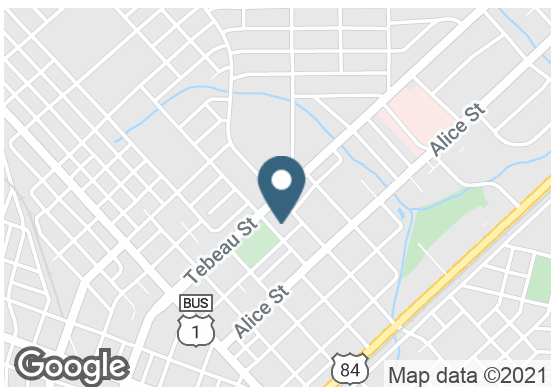


Overview

BUILDING SIZE

LEASE END DATE 12/31/2020

RATE Contact Broker



Description

Former Rite Aid space located in Pinehill Crossing shopping center

Demographics

	1 MILE	3 MILES	5 MILES
Median HH Income	\$28,727	\$33,247	\$36,421
Average HH Income	\$40,480	\$48,410	\$52,160
Households	2,287	8,512	11,859
Current Population	5,457	21,100	31,876

Year: 2018 | Source: ESRI

Contact

ADRIENNE CRAWFORD

678.420.1383 | adrienne.crawford@srsre.com

LILY H. HEIMBURGER

404.231.1335 | lily.heimburger@srsre.com

Traffic Counts

Plant Avenue Ext	17,100 VPD
Memorial Dr	15,700 VPD
Jacksonville Hwy	22,100 VPD

Year: 2016 | Source: GDOT

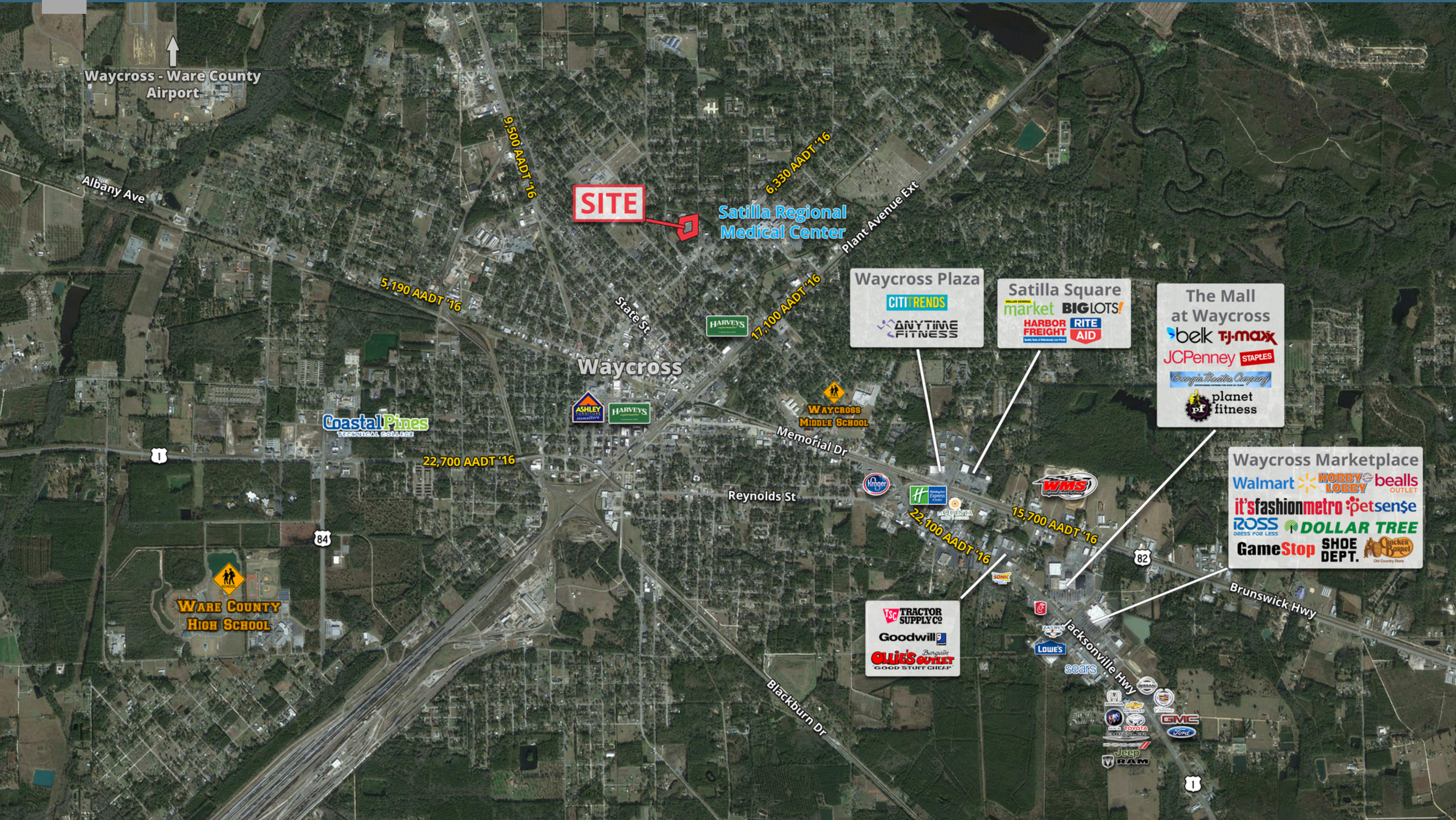
SRS REAL ESTATE PARTNERS | 3445 Peachtree Road NE, Suite 950 | Atlanta, GA 30326 | 404.231.2232

This information contained herein was obtained from sources deemed to be reliable; however SRS Real Estate Partners makes no guarantees, warranties or representations as to the completeness or accuracy thereof.

SRSRE.COM

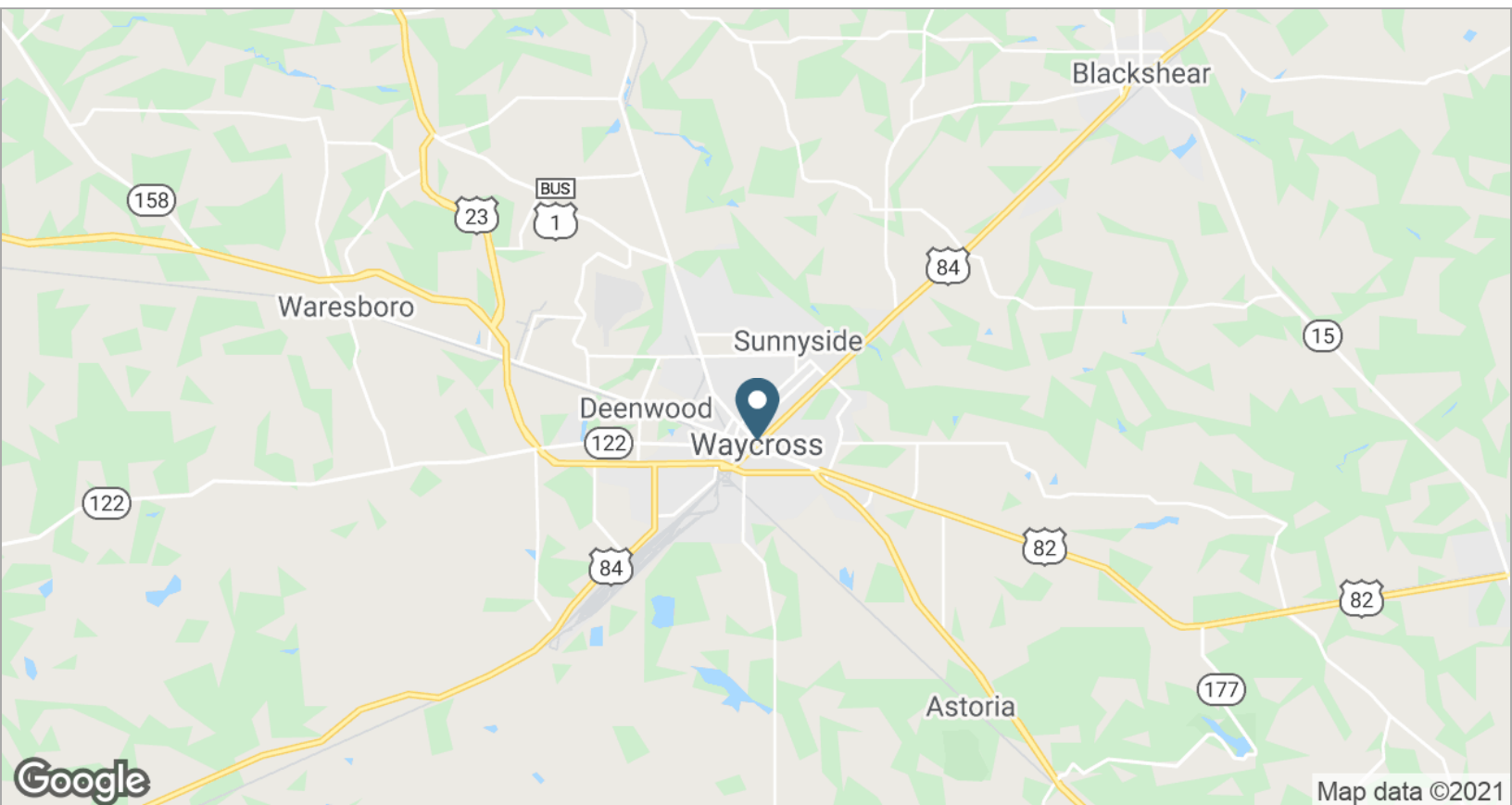
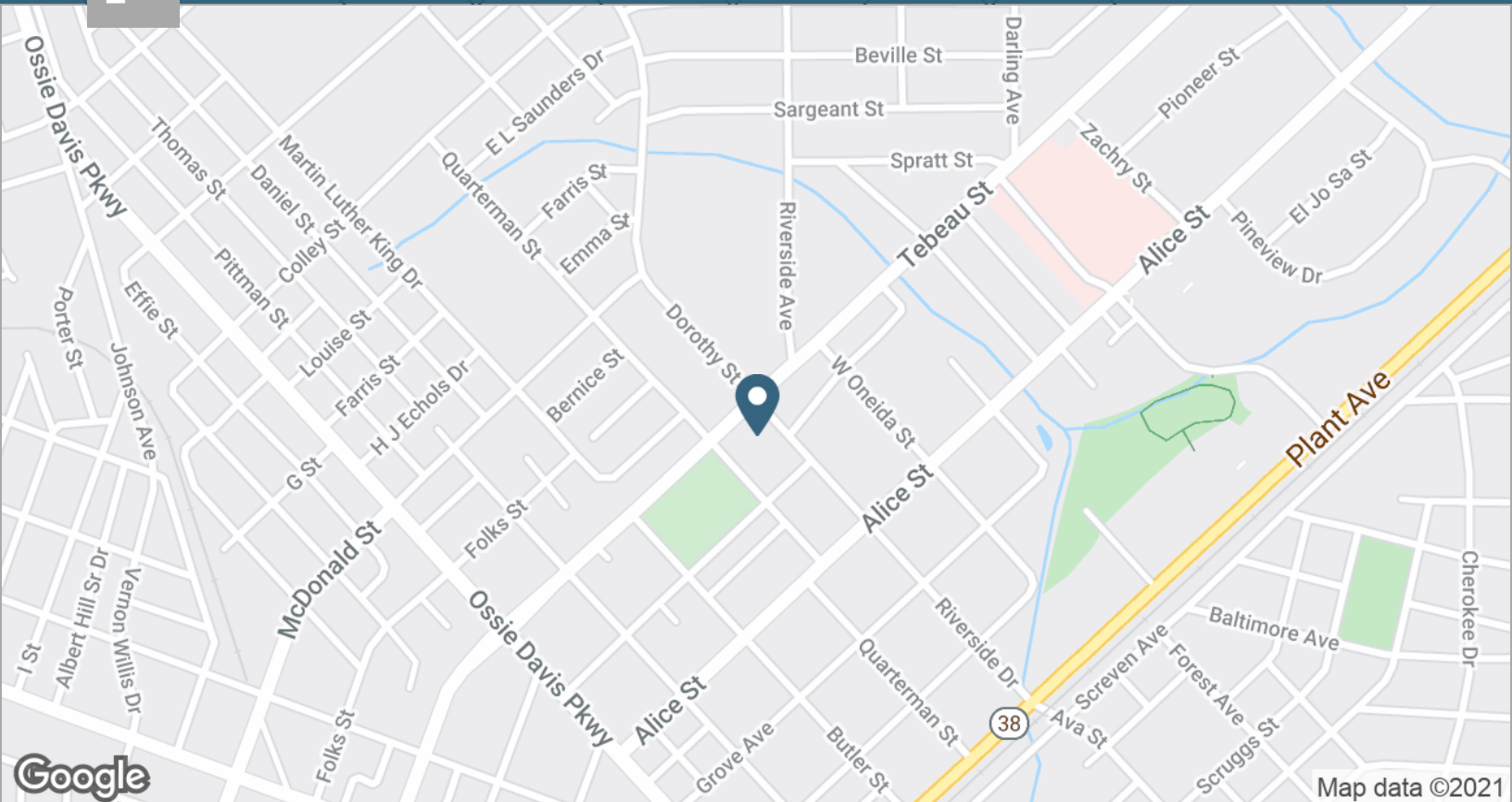
Former Rite Aid - Riverside Ave, Waycross, GA

701 Riverside Dr | Waycross, GA



Former Rite Aid - Riverside Ave, Waycross, GA

701 Riverside Dr | Waycross, GA



	1 mile	3 miles	5 miles
Population			
2018 Population	5,457	21,100	31,876
2000 Population	6,123	21,843	31,069
2010 Population	5,760	21,674	32,421
2023 Population	5,382	20,953	31,812
2000-2010 Annual Rate	-0.61%	-0.08%	0.43%
2010-2018 Population: Annual Growth Rate	-0.65%	-0.32%	-0.21%
2018-2023 Population: Annual Growth Rate	-0.28%	-0.14%	-0.04%
2018 Median Age	42.2	39.4	38.9
Households			
2000 Households	2,582	8,875	11,833
2010 Households	2,434	8,780	12,113
2018 Total Households	2,287	8,512	11,859
2023 Total Households	2,250	8,443	11,812
2000-2010 Annual Rate	-0.59%	-0.11%	0.23%
2010-2018 Households: Annual Growth Rate	-0.75%	-0.38%	-0.26%
2018-2023 Households: Annual Growth Rate	-0.33%	-0.16%	-0.08%
2018 Average Household Size	2.31	2.45	2.55
Housing Units			
2018 Total Housing Units	3,103	10,625	14,426
2018 Owner Occupied Housing Units	1,001	4,472	6,858
2018 Renter Occupied Housing Units	1,286	4,040	5,001
2018 Vacant Housing Units	816	2,113	2,567
Race and Ethnicity			
2018 White Alone	35.8%	53.5%	62.9%
2018 Black Alone	60.0%	40.6%	31.4%
2018 American Indian/Alaska Native Alone	0.5%	0.5%	0.5%
2018 Asian Alone	0.8%	1.3%	1.2%
2018 Pacific Islander Alone	0.1%	0.0%	0.0%
2018 Hispanic Origin (Any Race)	2.5%	3.9%	4.2%
Income			
2018 Median Household Income	\$28,727	\$33,247	\$36,421
2018 Average Household Income	\$40,480	\$48,410	\$52,160
Per Capita Income	\$17,207	\$19,556	\$20,483
2018 Population 25+ by Educational Attainment			
Total	3,785	14,305	21,844
High School Graduate	32.8%	30.1%	30.4%
GED/Alternative Credential	7.9%	7.9%	8.8%
Some College, No Degree	21.2%	23.4%	21.9%
Associate Degree	10.4%	8.1%	7.9%
Bachelor's Degree	7.7%	8.5%	8.4%
Graduate/Professional Degree	5.1%	6.9%	6.4%
Data for all businesses in area			
Total Businesses:	446	1,206	1,410
Total Employees:	5,623	14,191	17,762
Total Residential Population:	5,457	21,100	31,876
Employee/Residential Population Ratio:	1.03:1	0.67:1	0.56:1
2018 Total Daytime Population	9,081	26,968	36,044
Workers	5,726	14,784	18,856
Residents	3,355	12,184	17,188