



OAKHOLLOW BUSINESS PARK- FLEX 1220 CORPORATE DR. W.

1220 WEST CORPORATE DRIVE
ARLINGTON, TX 76006

David Dunn, CCIM, SIOR

Executive Director

O: 817.640.9964

david.dunn@svn.com

TX #0375841

Courtney Stanford, CCIM

Managing Director

O: 817.640.9964

courtney.stanford@svn.com

TX #704141

Property Summary



OFFERING SUMMARY

Available SF:	
Lease Rate:	N/A
Lot Size:	5.53 Acres
Year Built:	1975
Building Size:	16,312 SF
Zoning:	Light Industrial
Market:	GSW Industrial
Submarket:	Arlington

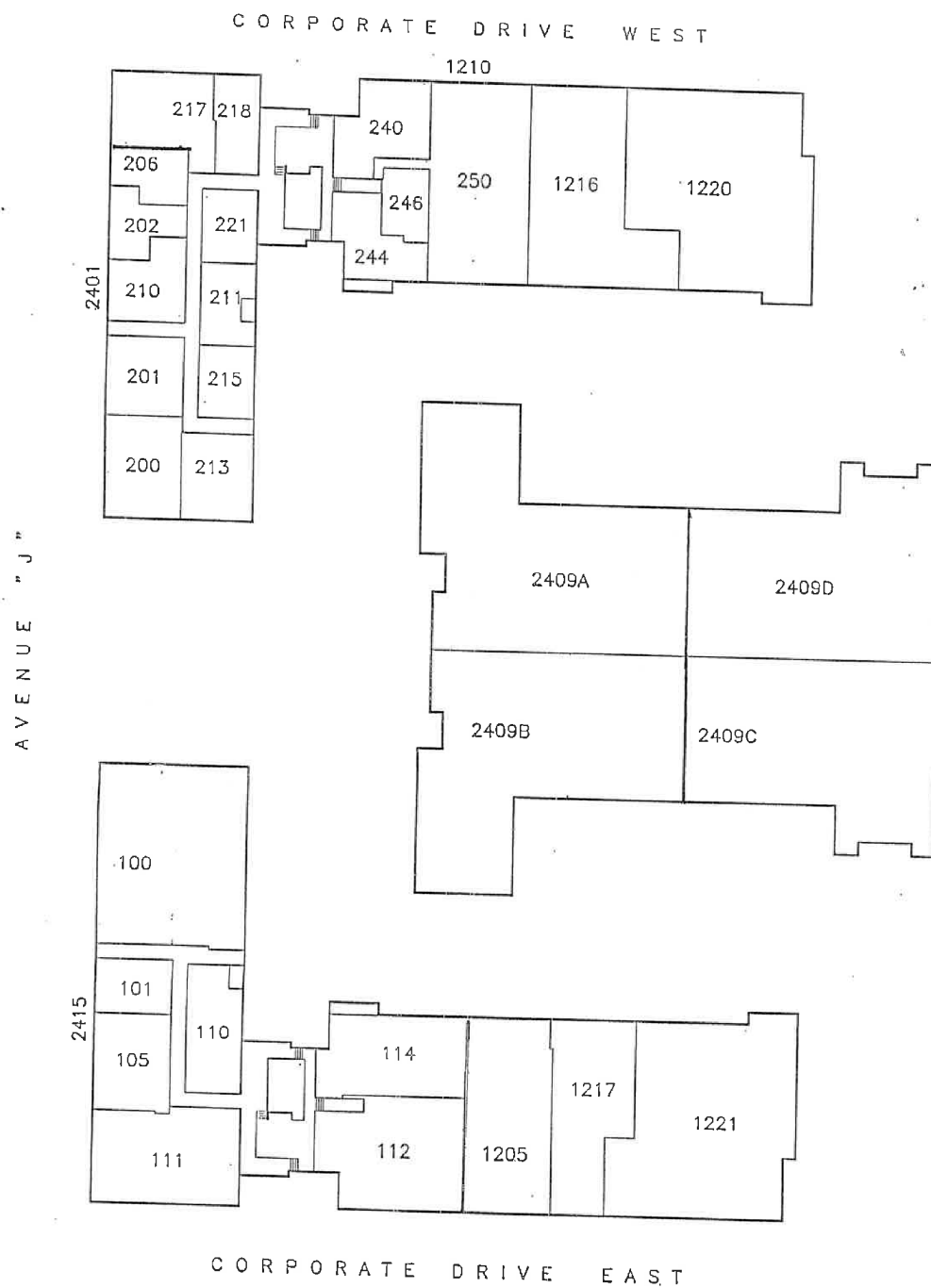
PROPERTY OVERVIEW

Well located business park in the heart of DFW. Close to I-30 and Hwy 360. Well maintained with property management and leasing onsite. This is a pride of ownership property that you must see.

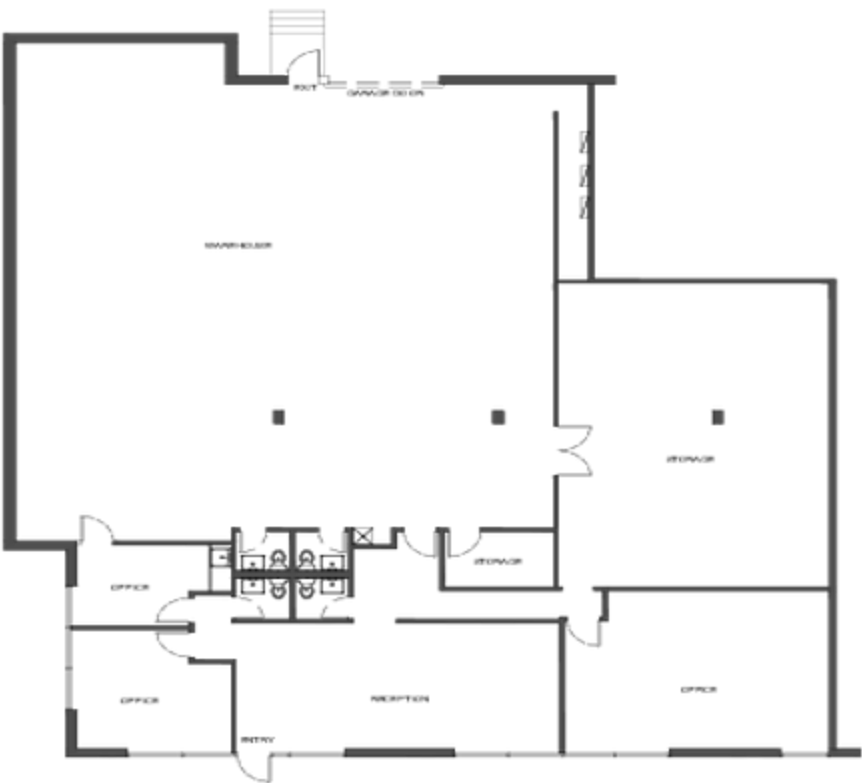
PROPERTY HIGHLIGHTS

- 100% AC
- Dock High doors
- Independently metered spaces
- Rear load
- Meticulously landscaped and maintained

Site Plan



1220 Corporate Drive West Floor Plan





**SUITE 1220
FLOOR PLAN**
SCALE: 1/16" = 1'-0"
© 2015 SVN LLC

1210 CORPORATE DR W ARLINGTON, TX 76008	
OFFICE AREA: 2,854 SQFT	TOTAL AREA: 5,647 SQFT
WAREHOUSE AREA: 2,993 SQFT	



Available Spaces



LEASE RATE:	N/A	TOTAL SPACE:	-
LEASE TYPE:	-	LEASE TERM:	Negotiable

SPACE	SPACE USE	LEASE RATE	LEASE TYPE	SIZE	TERM	COMMENTS
1220 Corporate Drive West	Flex Space	\$9.00 SF/yr	Modified Gross	5,647 SF	36 months	Former athletic training facility. Updated with wood flooring and many other amenities. 2 Dock high doors and heavy power. 5397 SF available 100% AC 2 dock high doors corner space at end of building 38 parking spaces 4 bathrooms within unit

Location Maps

