

FOR LEASE

Former Rite Aid - Abercorn St, Savannah, GA

10402 Abercorn St | Savannah, GA



Overview

BUILDING SIZE

LEASE END DATE 11/30/2022

RATE \$14.00 SF/yr (MG)

Description

- Former Rite Aid building
- Located along the main retail corridor of Abercorn
- Lighted intersection
- All offers are subject to approval by Walgreens Real Estate Committee



Demographics

	1 MILE	3 MILES	5 MILES
Median HH Income	\$41,314	\$46,086	\$45,705
Average HH Income	\$52,256	\$61,188	\$63,212
Households	5,547	19,040	41,483
Current Population	13,162	48,579	108,798

Year: 2018 | Source: ESRI

Contact

ADRIENNE CRAWFORD

678.420.1383 | adrienne.crawford@srsre.com

LILY H. HEIMBURGER

404.231.1335 | lily.heimburger@srsre.com

Traffic Counts

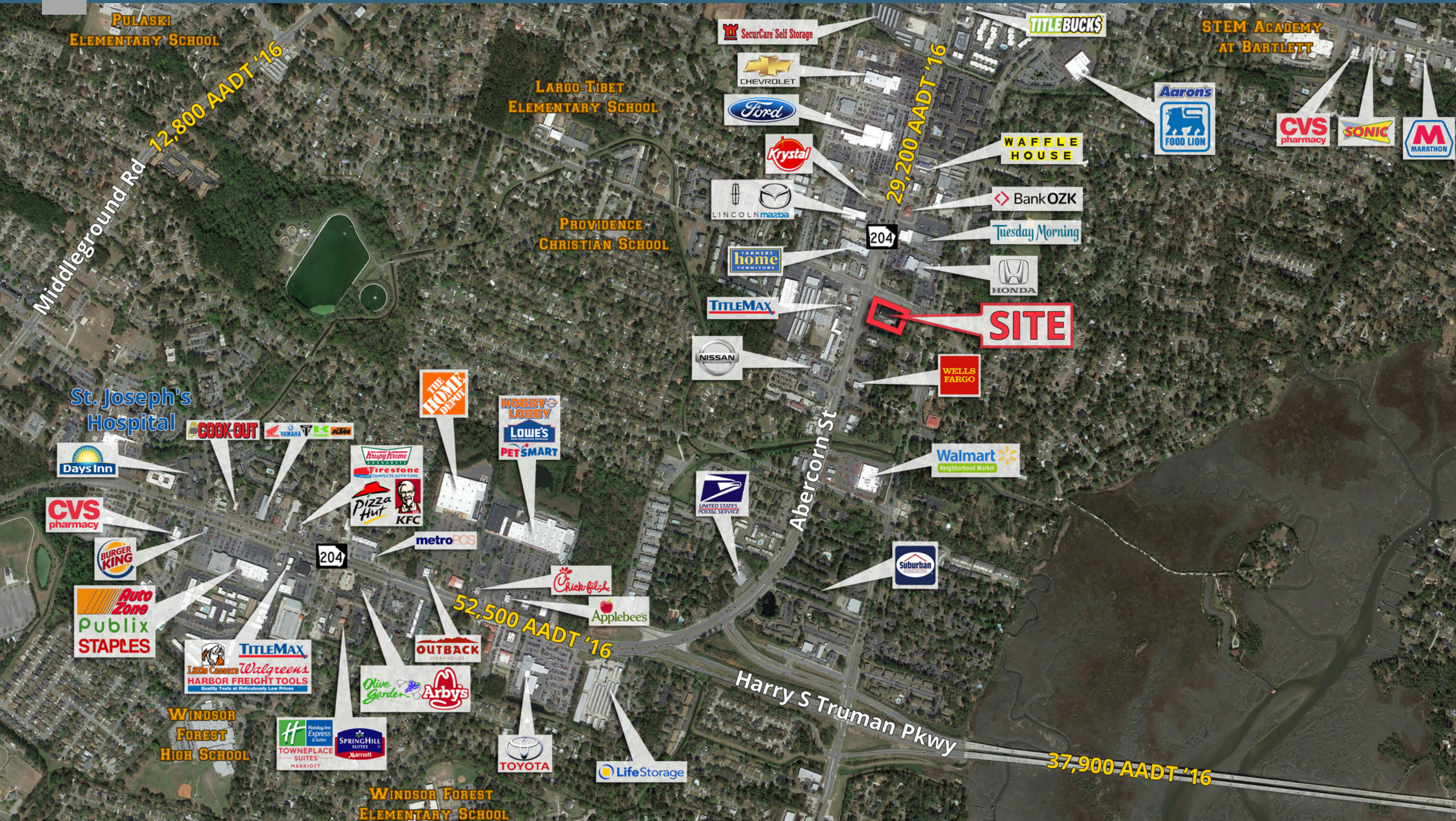
Abercorn St	29,200 VPD
Harry S Truman Pkwy	52,500 VPD
Middleground Rd	12,800 VPD

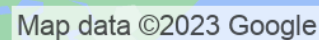
Year: 2016 | Source: GDOT

SRS REAL ESTATE PARTNERS | 3445 Peachtree Road NE, Suite 950 | Atlanta, GA 30326 | 404.231.2232

This information contained herein was obtained from sources deemed to be reliable; however SRS Real Estate Partners makes no guarantees, warranties or representations as to the completeness or accuracy thereof.

SRSRE.COM





Former Rite Aid - Abercorn St, Savannah, GA

10402 Abercorn St | Savannah, GA



	1 mile	3 miles	5 miles
Population			
2018 Population	13,162	48,579	108,798
2000 Population	13,150	47,586	103,429
2010 Population	12,408	46,373	103,092
2023 Population	13,723	50,342	112,756
2000-2010 Annual Rate	-0.58%	-0.26%	-0.03%
2010-2018 Population: Annual Growth Rate	0.72%	0.56%	0.66%
2018-2023 Population: Annual Growth Rate	0.84%	0.72%	0.72%
2018 Median Age	31.3	33.6	34.8
Households			
2000 Households	5,553	18,640	40,263
2010 Households	5,261	18,344	39,887
2018 Total Households	5,547	19,040	41,483
2023 Total Households	5,771	19,689	42,931
2000-2010 Annual Rate	-0.54%	-0.16%	-0.09%
2010-2018 Households: Annual Growth Rate	0.64%	0.45%	0.48%
2018-2023 Households: Annual Growth Rate	0.79%	0.67%	0.69%
2018 Average Household Size	2.36	2.42	2.47
Housing Units			
2018 Total Housing Units	6,531	21,519	47,064
2018 Owner Occupied Housing Units	1,525	8,720	21,174
2018 Renter Occupied Housing Units	4,022	10,320	20,308
2018 Vacant Housing Units	984	2,479	5,581
Race and Ethnicity			
2018 White Alone	36.5%	50.1%	44.7%
2018 Black Alone	49.5%	37.3%	46.6%
2018 American Indian/Alaska Native Alone	0.4%	0.3%	0.2%
2018 Asian Alone	3.8%	4.0%	2.6%
2018 Pacific Islander Alone	0.5%	0.3%	0.2%
2018 Hispanic Origin (Any Race)	12.5%	10.0%	6.6%
Income			
2018 Median Household Income	\$41,314	\$46,086	\$45,705
2018 Average Household Income	\$52,256	\$61,188	\$63,212
Per Capita Income	\$22,104	\$25,284	\$25,618
2018 Population 25+ by Educational Attainment			
Total	8,468	31,795	71,100
High School Graduate	21.6%	20.1%	20.9%
GED/Alternative Credential	4.6%	4.5%	4.6%
Some College, No Degree	34.5%	28.2%	26.9%
Associate Degree	8.0%	7.2%	6.8%
Bachelor's Degree	13.1%	18.1%	18.3%
Graduate/Professional Degree	7.8%	10.3%	11.2%
Data for all businesses in area			
Total Businesses:	487	2,911	4,711
Total Employees:	5,769	36,784	61,877
Total Residential Population:	13,162	48,579	108,798
Employee/Residential Population Ratio:	0.44:1	0.76:1	0.57:1
2018 Total Daytime Population	11,934	65,553	122,770
Workers	5,717	40,959	65,124
Residents	6,217	24,594	57,646