

FOR LEASE

Former Rite Aid - Knight Ave, Waycross, GA

1803 Knight Ave | Waycross, GA



Overview

BUILDING SIZE

LEASE END DATE 10/31/2025

RATE \$6.00 SF/yr (MG)



Description

- Former Rite Aid space
- Located in Satilla Square Shopping Center
- Neighboring tenants: Big Lots, Dollar General Market and Harbor Freight Tools
- Intersection serviced by traffic light
- All offers are subject to approval by Walgreens Real Estate Committee

Demographics

	1 MILE	3 MILES	5 MILES
Median HH Income	\$50,641	\$38,096	\$35,308
Average HH Income	\$81,060	\$57,118	\$51,100
Households	430 Mile	5,236	10,703
Current Population	945 Mile	12,642	26,821

Year: 2018 | Source: ESRI

Contact

ADRIENNE CRAWFORD

678.420.1383 | adrienne.crawford@srsre.com

LILY H. HEIMBURGER

404.231.1335 | lily.heimburger@srsre.com

Traffic Counts

Memorial Dr	15,700 VPD
Jacksonville Hwy	22,100 VPD
Plant Ave Ext	17,100 VPD
HWY - 1	22,700 VPD

Year: 2016 | Source: GDOT

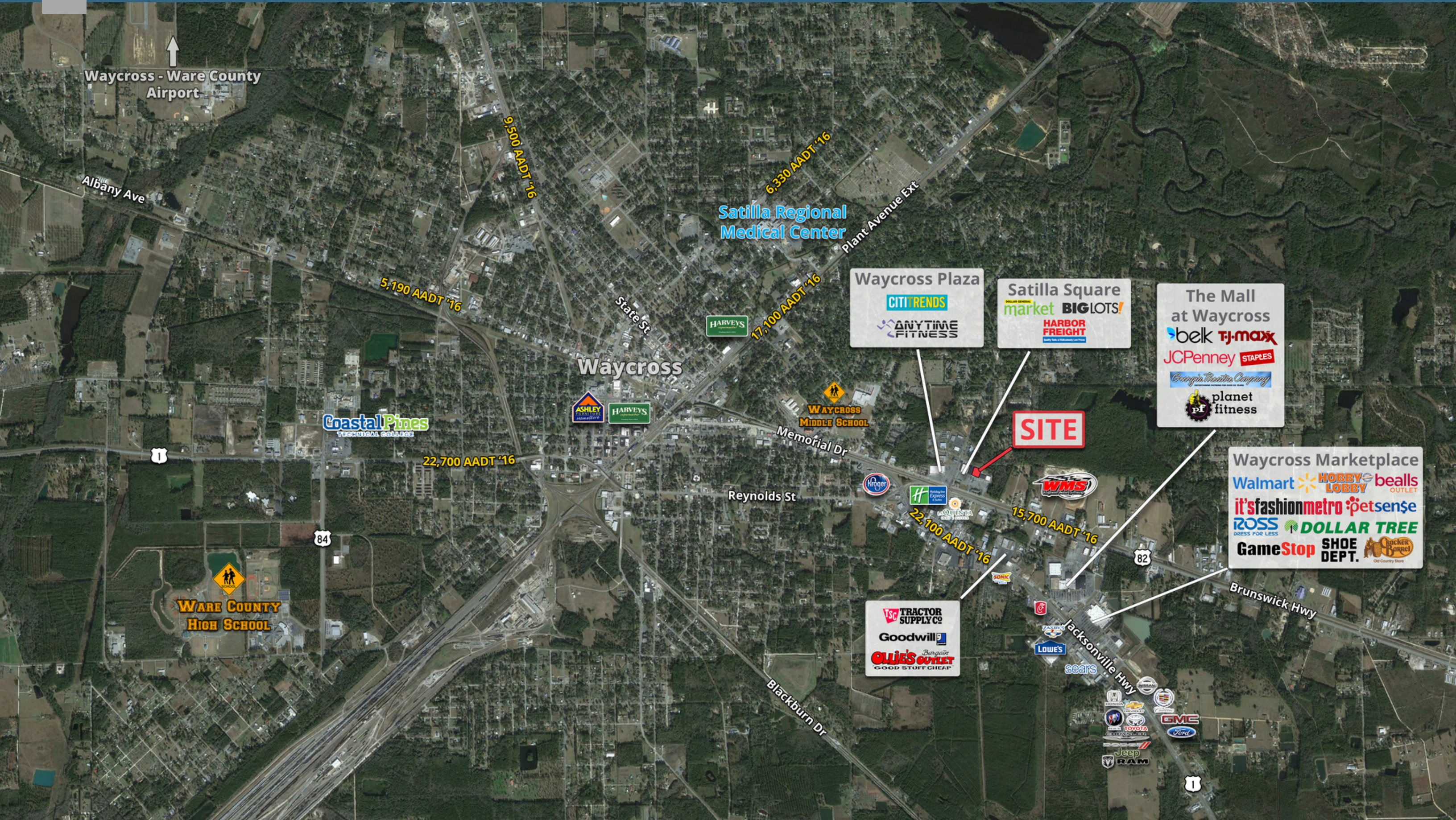
SRS REAL ESTATE PARTNERS | 3445 Peachtree Road NE, Suite 950 | Atlanta, GA 30326 | 404.231.2232

This information contained herein was obtained from sources deemed to be reliable; however SRS Real Estate Partners makes no guarantees, warranties or representations as to the completeness or accuracy thereof.

SRSRE.COM

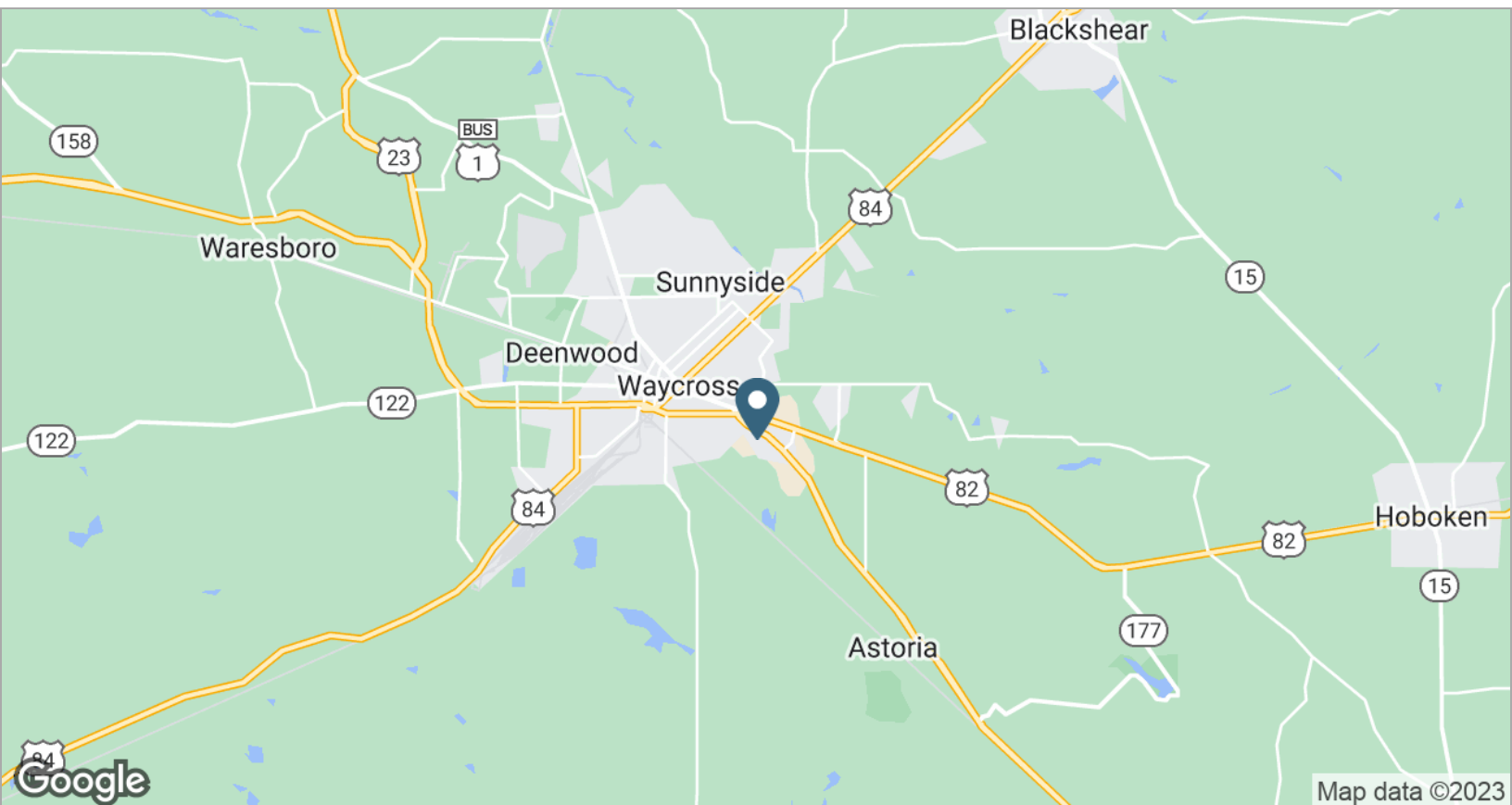
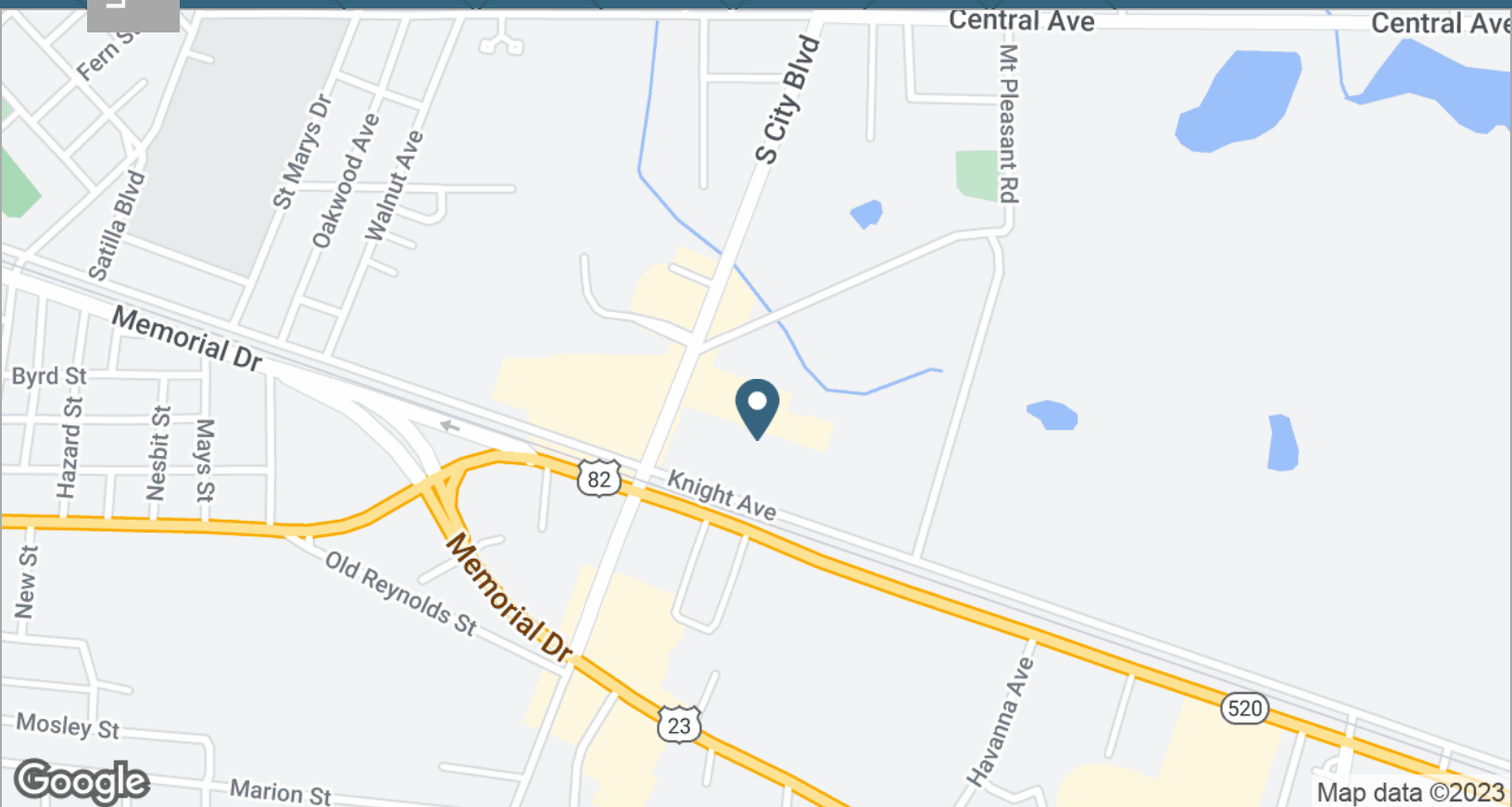
Former Rite Aid - Knight Ave, Waycross, GA

1803 Knight Ave | Waycross, GA



Former Rite Aid - Knight Ave, Waycross, GA

1803 Knight Ave | Waycross, GA



Former Rite Aid - Knight Ave, Waycross, GA

1803 Knight Ave | Waycross, GA



	1 mile	3 miles	5 miles
Population			
2018 Population	945	12,642	26,821
2000 Population	907	13,061	26,940
2010 Population	961	12,913	27,373
2023 Population	939	12,560	26,703
2000-2010 Annual Rate	0.58%	-0.11%	0.16%
2010-2018 Population: Annual Growth Rate	-0.20%	-0.26%	-0.25%
2018-2023 Population: Annual Growth Rate	-0.13%	-0.13%	-0.09%
2018 Median Age	43.2	39.7	39.6
Households			
2000 Households	396	5,408	10,809
2010 Households	437	5,379	10,978
2018 Total Households	430	5,236	10,703
2023 Total Households	428	5,195	10,639
2000-2010 Annual Rate	0.99%	-0.05%	0.16%
2010-2018 Households: Annual Growth Rate	-0.20%	-0.33%	-0.31%
2018-2023 Households: Annual Growth Rate	-0.09%	-0.16%	-0.12%
2018 Average Household Size	2.20	2.40	2.49
Housing Units			
2018 Total Housing Units	489	6,314	13,083
2018 Owner Occupied Housing Units	273	2,979	6,072
2018 Renter Occupied Housing Units	158	2,257	4,631
2018 Vacant Housing Units	59	1,078	2,380
Race and Ethnicity			
2018 White Alone	76.6%	63.1%	61.0%
2018 Black Alone	15.6%	30.5%	33.1%
2018 American Indian/Alaska Native Alone	0.6%	0.6%	0.6%
2018 Asian Alone	4.1%	2.2%	1.3%
2018 Pacific Islander Alone	0.0%	0.0%	0.0%
2018 Hispanic Origin (Any Race)	2.4%	3.4%	4.1%
Income			
2018 Median Household Income	\$50,641	\$38,096	\$35,308
2018 Average Household Income	\$81,060	\$57,118	\$51,100
Per Capita Income	\$34,380	\$23,389	\$20,466
2018 Population 25+ by Educational Attainment			
Total	676	8,590	18,250
High School Graduate	24.6%	29.1%	30.8%
GED/Alternative Credential	8.0%	6.3%	7.4%
Some College, No Degree	19.4%	22.5%	22.9%
Associate Degree	8.1%	7.8%	8.2%
Bachelor's Degree	13.3%	10.9%	8.2%
Graduate/Professional Degree	18.8%	10.5%	7.3%
Data for all businesses in area			
Total Businesses:	177	948	1,321
Total Employees:	2,434	11,326	15,174
Total Residential Population:	945	12,642	26,821
Employee/Residential Population Ratio:	2.58:1	0.9:1	0.57:1
2018 Total Daytime Population	4,052	18,845	31,090
Workers	3,581	11,710	15,771
Residents	471	7,135	15,319