



HENDRIX  
COLLEGE

# Southern Hospitality

WELCOMING FUTURE STUDENTS TO HENDRIX





# Rolling Out The Orange Carpet



To successfully recruit the best and brightest students and provide ample space for all guests to access the campus, Hendrix needs a new front door that is as friendly and inviting as our community.

The Hendrix Admission and Financial Aid offices are now housed in historic 101-year-old Ellis Hall, which is inadequate to support the thousands of visitors Hendrix hosts each year. A new campus Welcome Center is needed for Hendrix to make a warm and polished first

impression on future students and their families. Rolling out the orange carpet in a vibrant, modern 21st century space will ensure that Hendrix remains competitive as we seek to fulfill the recruiting goals of our new strategic plan.

All Hendrix students will pass through the new Welcome Center at the beginning of their Hendrix experience, a life-changing journey that prepares them to make a difference in the world.





HENDRIX  
COLLEGE

MARY ANN &  
DAVID DAWKINS

# WELCOME CENTER

## Naming Opportunities

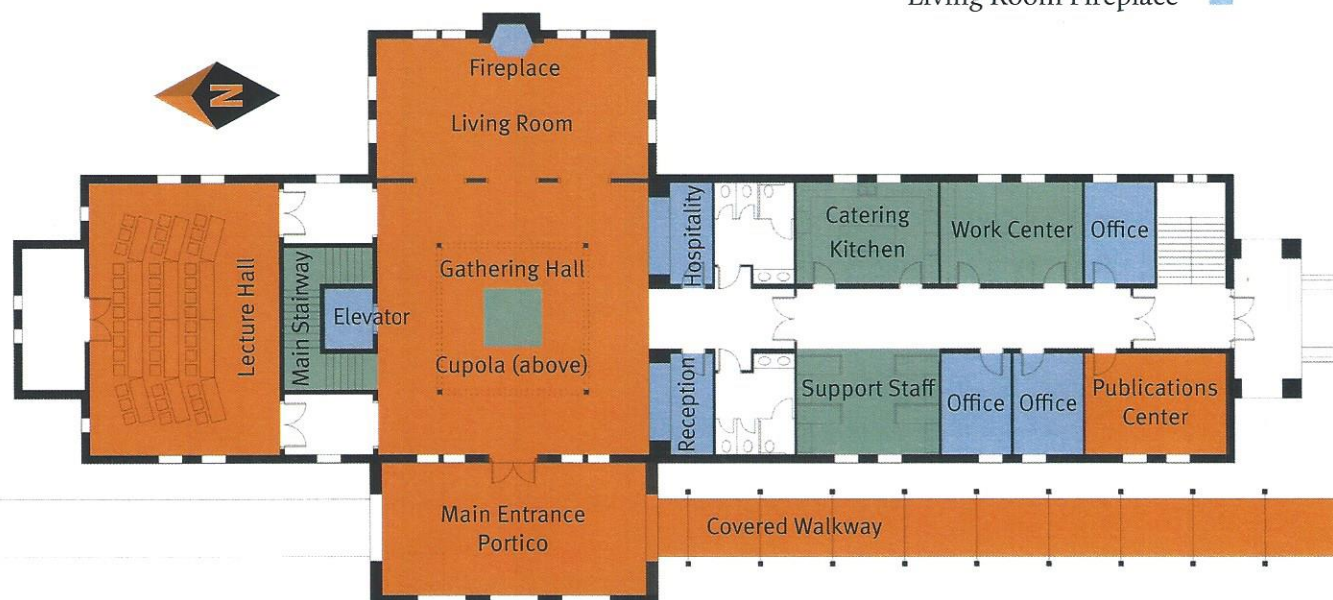
### EXTERIOR

- Main Entrance Portico ■
- Covered Walkway ■
- Cupola ■



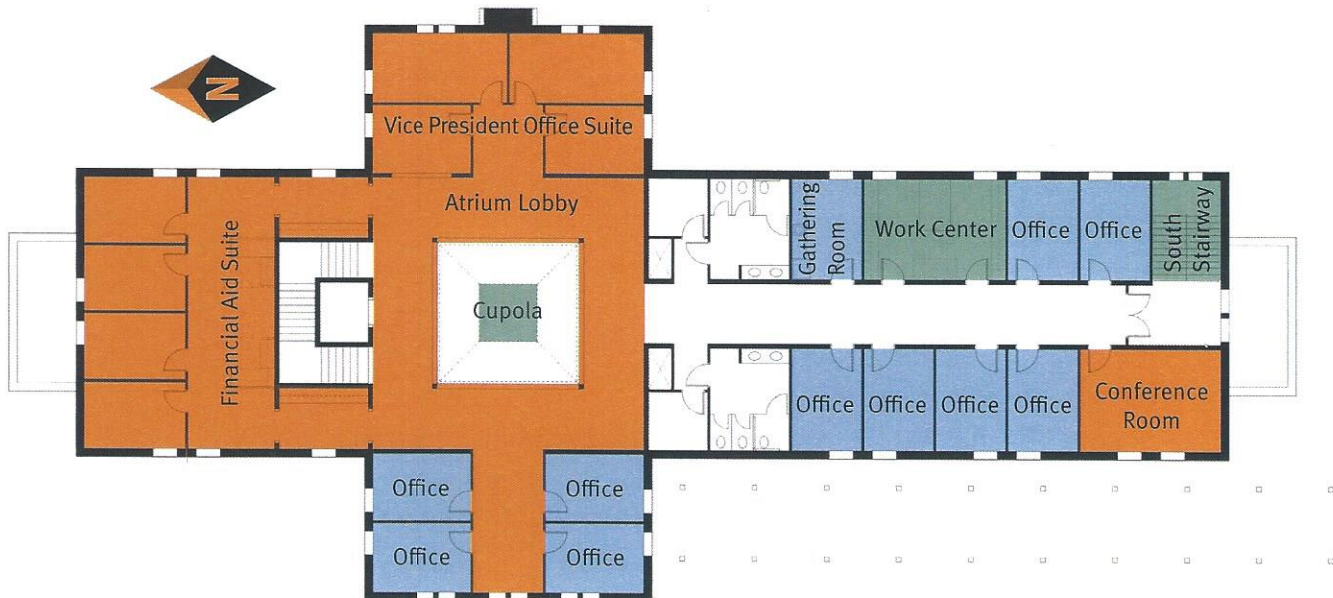
### FIRST FLOOR

- |                       |                    |                         |
|-----------------------|--------------------|-------------------------|
| Gathering Hall ■      | Main Stairway ■    | Reception ■             |
| Lecture Hall ■        | Support Staff ■    | Hospitality Center ■    |
| Living Room ■         | Work Center ■      | Elevator ■              |
| Publications Center ■ | Catering Kitchen ■ | Offices (3x) ■          |
|                       |                    | Living Room Fireplace ■ |



## SECOND FLOOR

- |                             |   |                |   |
|-----------------------------|---|----------------|---|
| Financial Aid Suite         | ■ | South Stairway | ■ |
| Vice President Office Suite | ■ | Work Center    | ■ |
| Atrium Lobby                | ■ | Gathering Room | ■ |
| Conference Room             | ■ | Offices (10x)  | ■ |



## PEDESTRIAN BRIDGE ■

### GIFT AMOUNTS

- |                       |   |
|-----------------------|---|
| \$100,000 – \$500,000 | ■ |
| \$50,000 – \$99,000   | ■ |
| \$15,000 – \$49,000   | ■ |



For more information, contact: Reverend J. Wayne Clark '84  
Associate Vice President of Development  
501.450.1223, [clark@hendrix.edu](mailto:clark@hendrix.edu)





## THE MABEE CHALLENGE

At a cost of \$7 million, the new Welcome Center represents the lead capital project to launch the College's new strategic vision and comprehensive campaign.

The new center will be named the Mary Ann and David Dawkins Welcome Center to honor the extraordinary generosity of Mary Ann Dawkins. Her bequest was the largest in the College's history and will support scholarships for current and future generations of Hendrix students.

Hendrix has received a \$1 million challenge grant from the J.E. and L.E. Mabee Foundation. To successfully meet the Mabee Challenge, Hendrix must raise \$2 million in gifts and pledges needed for the Welcome Center by September 30, 2016.

### BUILDING FEATURES:

- 16,800 square feet of space designed to comfortably accommodate the 5000+ students and families who visit our campus each year
- Architecture features inspired by Hulen Hall, including the dormers, fireplace, roof, and windows
- Large, flexible, media-rich space at the heart of the building including lecture space (1,025 sq. ft.), gathering hall (1,320 sq. ft.), and reception hall (800 sq. ft.) that flows into a covered back porch
- Lecture, gathering and reception space that can be combined to host receptions, performances, and other campus events
- Green building, constructed to LEED standards
- Convenient guest parking
- Covered walkway from parking area offering easy access in inclement weather
- Private spaces for families to meet with counselors and financial aid officers





## BRINGING CAMPUS TOGETHER

Between the new Welcome Center and the Student Life and Technology Center, the metal pedestrian bridge that has spanned Harkrider Street for decades will be refurbished and upgraded to complement the historic architecture of the Hendrix campus as well as the new Welcome Center. The revitalized bridge between the east and west sides of campus will better connect our academic, residential, student life, and wellness and athletics facilities.

**Help us meet the Mabee Challenge!**

For more information, contact:

Reverend J. Wayne Clark '84  
Associate Vice President of Development  
501.450.1223, [clark@hendrix.edu](mailto:clark@hendrix.edu)



### OFFICE OF ADVANCEMENT

1600 Washington Avenue  
Conway, Arkansas  
72032-3080

[www.hendrix.edu/giving](http://www.hendrix.edu/giving)