

SPACE AVAILABLE IN HIGH VISIBILITY TIGARD OFFICE BUILDING

11560 SW 67th Avenue, Tigard, Oregon



FOR LEASE

FOR MORE INFORMATION, CONTACT:

Seth Platsman

503.416.0091

seth@macadamforbes.com

1800 SW First Avenue, Suite 650 | Portland OR 97201 | WWW.MACADAMFORBES.COM | 503.227.2500

**MACADAM
FORBES**
COMMERCIAL REAL ESTATE SERVICES



PROPERTY FEATURES

AVAILABLE SPACE

First Floor West: 2,394 SF

First Floor East: 1,710 SF

Third Floor West: 2,394 SF

Third Floor East: 2,394 SF

TOTAL RSF

First Floor: 4,892 RSF

Third Floor: 4,892 RSF

PARKING

3.88/1,000 SF

LEASE RATE

First Floor: \$24/SF Modified Gross

Third Floor: \$26/SF Modified Gross



FEATURES

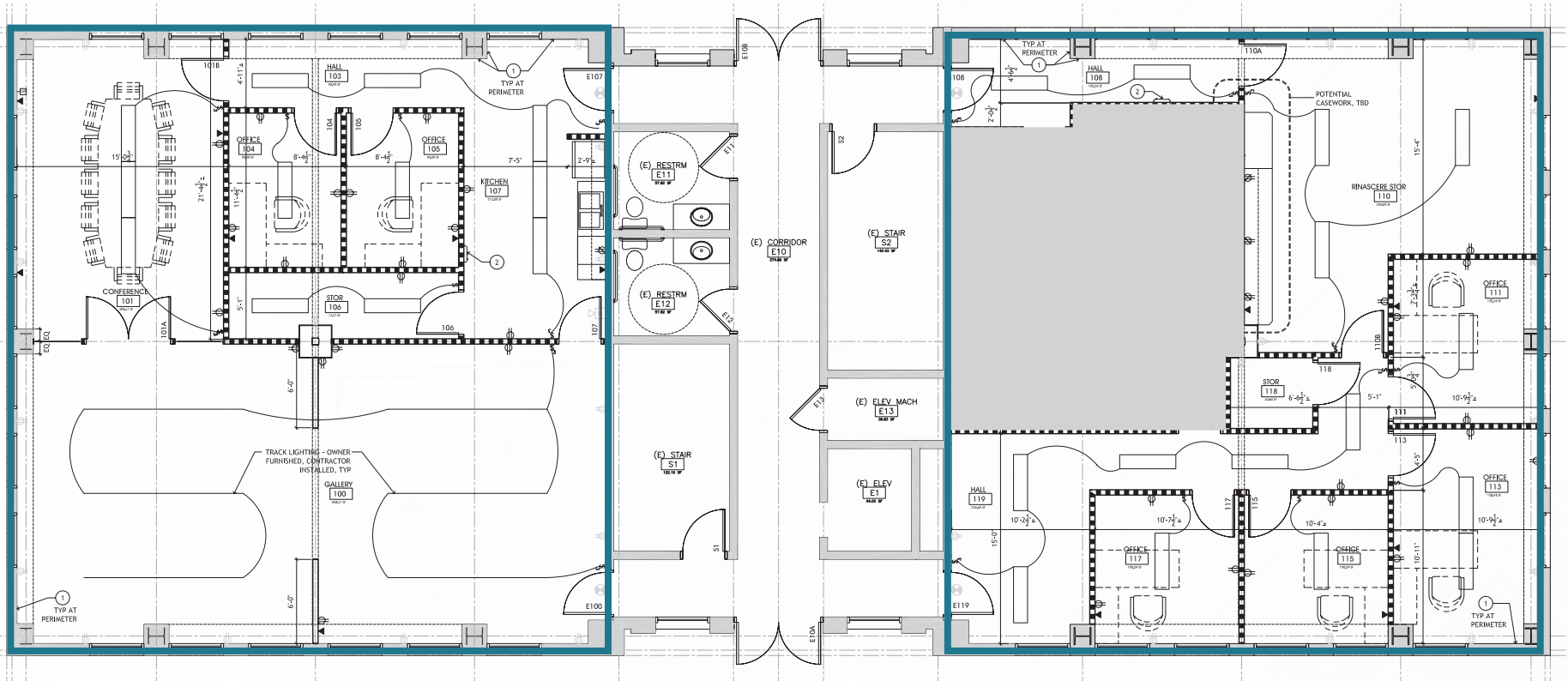
- Immediate access to I-5, Highway 217, and Highway 99W
- Close to amenities in the Tigard Triangle
- Class A finishes throughout
- Located in Washington County
- High ceilings
- Kitchenette/Breakroom
- Flexible layout
- Elevator served and ADA accessible



FIRST FLOOR PLAN

First Floor West - 2,394 SF

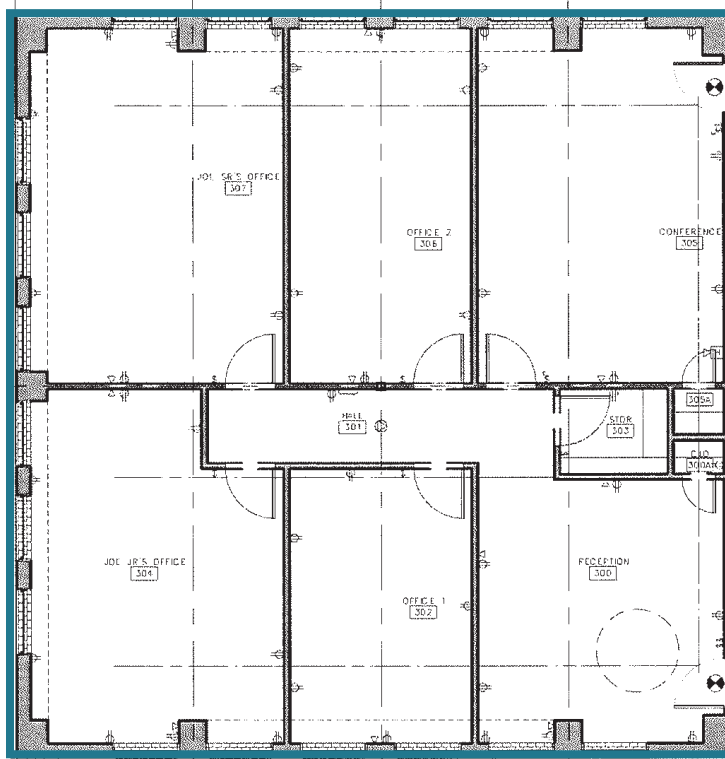
First Floor East - 1,710 SF



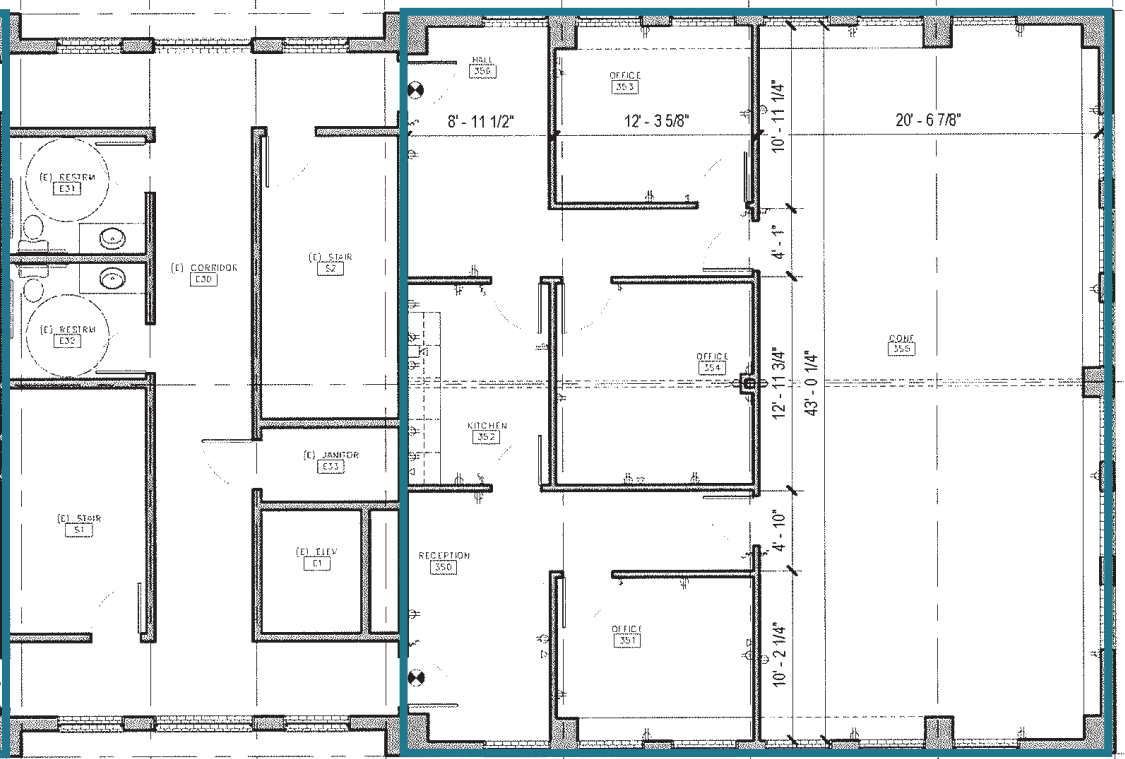


THIRD FLOOR PLAN

Third Floor West - 2,394 SF



Third Floor East - 2,394 SF





Downtown Portland:	12 Minutes
Kruse Way:	8 Minutes
Washington Square:	10 Minutes

Washington Square: 10 Minutes