

2761 Baseline Street

Cornelius, Oregon



PROPERTY DESCRIPTION

LOT SIZE

43,966 SF Total on 3 tax lots

IMPROVEMENTS

3,989 SF Retail building

FRONTAGE

775' on Baseline Street

SALE PRICE - LAND VALUE

\$950,000

FEATURES

- High exposure property with additional land
- Average Daily Traffic at Baseline: 33,200

ZONING

C2 - Highway Commercial, City of Cornelius

Permitted uses include: Service commercial; Auto sales, repairs and rentals; General office; Medical/dental; Restaurants; Motels and inns

FOR SALE



Joe Kappler
503.972.7294
joek@macadamforbes.com

1800 SW First Avenue, Suite 650 | Portland OR 97201 | WWW.MACADAMFORBES.COM | 503.227.2500

2761 Baseline Street

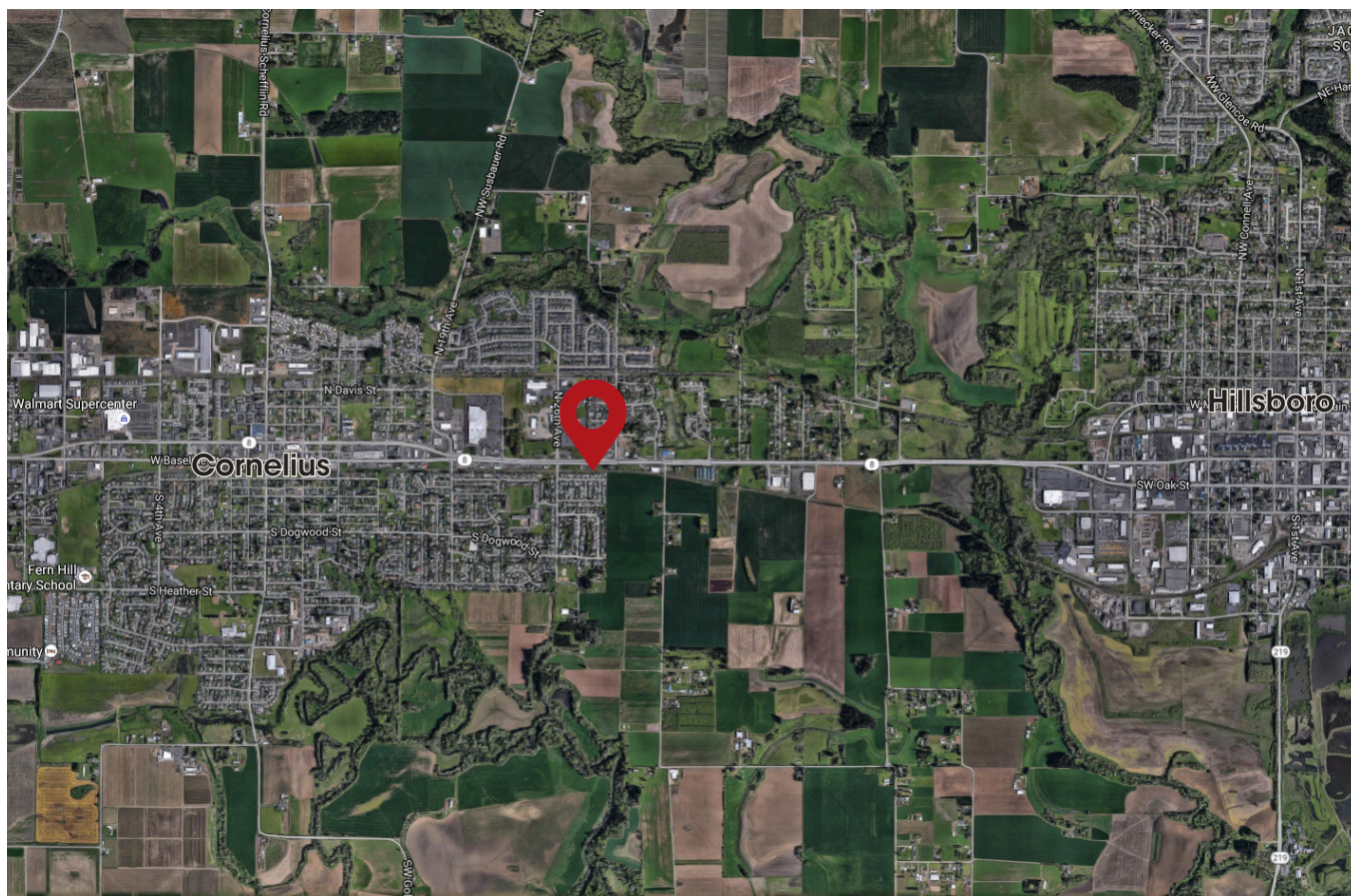
Cornelius, Oregon

FOR SALE



DEMOGRAPHICS

	1 Mile	3 Miles
Population	7,826	37,437
Households	2,315	12,178
Median HH Income	\$64,271	\$56,096
Pop. Growth '17-'22	↑6.6%	↑6.9%
HH Growth '17-'22	↑7.0%	↑7.1%



Joe Kappler
503.972.7294
joek@macadamforbes.com