

Industrial/Office Space

For Lease

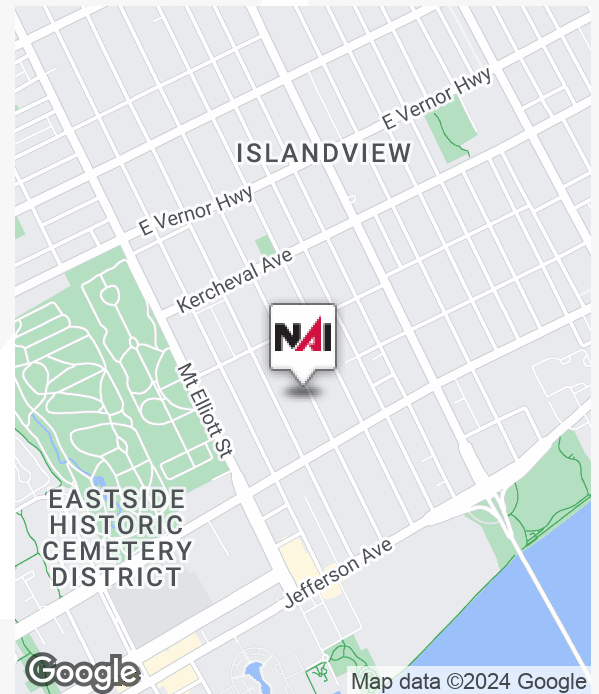


## Belt Line Center

1111 Bellevue, Detroit, Michigan 48207

### Property Highlights

- 152 SF Office Space Available
- 10,000-17,000 SF Industrial/Flex Space Available
- Overhead Door and Loading Dock Access
- Detroit's Newest Green Roof
- Onsite Secured Parking Lots and Several Amenities
- Ideal for Small-Medium Businesses
- Recently Redeveloped and Historic Albert Kahn Building
- Located on the Future Belt Line Greenway in the Islandview Neighborhood Near Belle Isle
- Contact Broker for Details



For more information

**Ryan DiCarlo**

O: 248 914 2582  
dicarlo@farbman.com

**Dan Callaway**

O: 313 202 2243  
callaway@farbman.com



# Lease Spaces

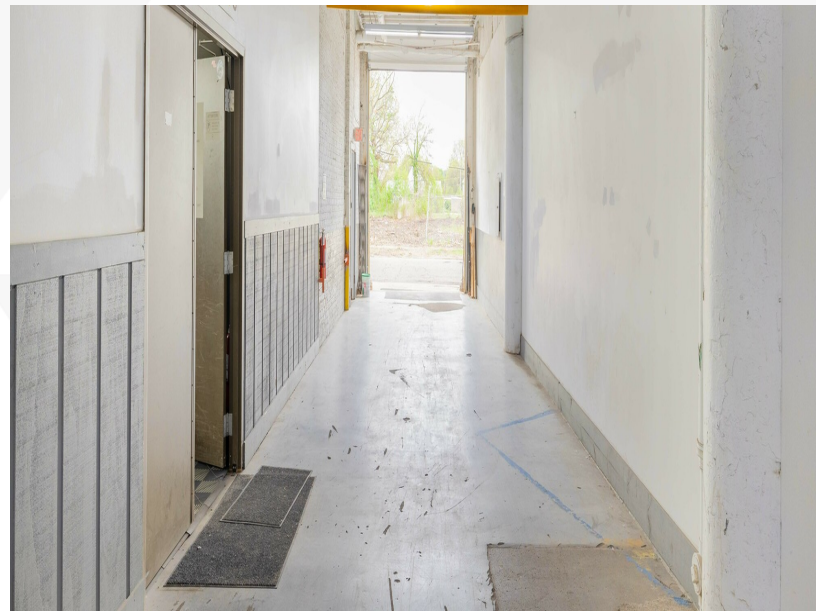
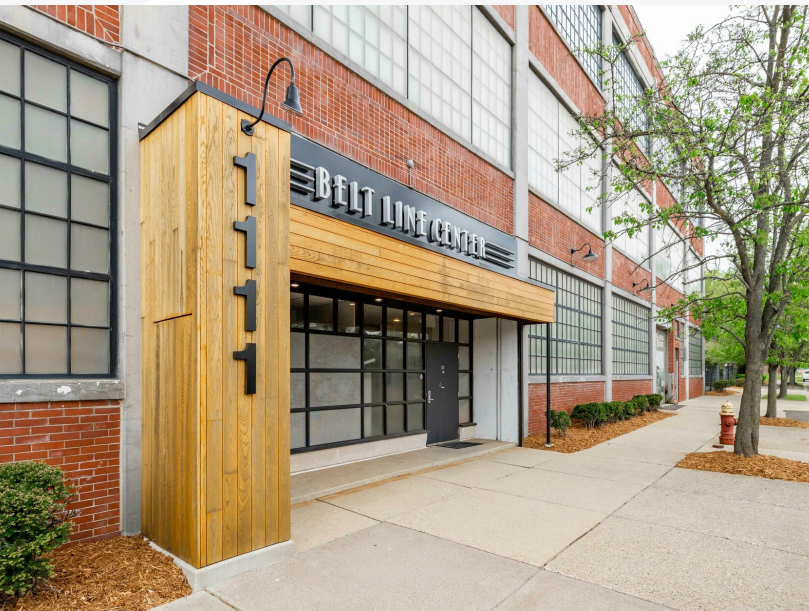


## AVAILABLE SPACES

SUITE	SIZE (SF)	LEASE TYPE	LEASE RATE	DESCRIPTION
Suite 230	152 SF	Full Service Gross	\$700 per month	Access to amenities such as: conference room, kitchenette, includes on-site secure parking, etc.
Suite CB	10,000-17,000 SF	Gross	Contact Listing Agent(s)	High-clear crane bay with drive-in ability, truck dock access, and additional mezzanine space. Can accommodate a variety of different users from industrial to quasi-retail.



## Additional Photos



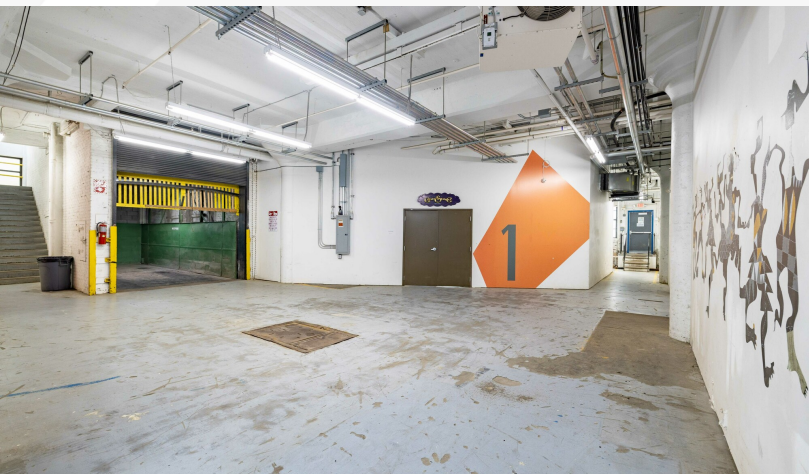
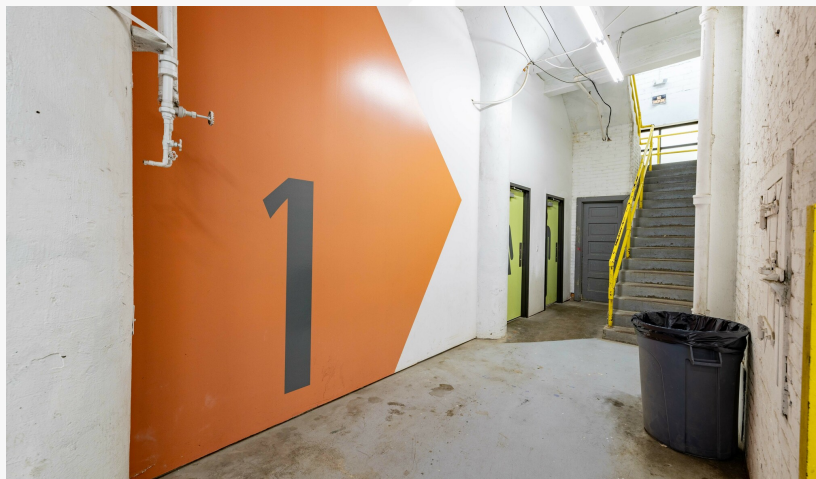
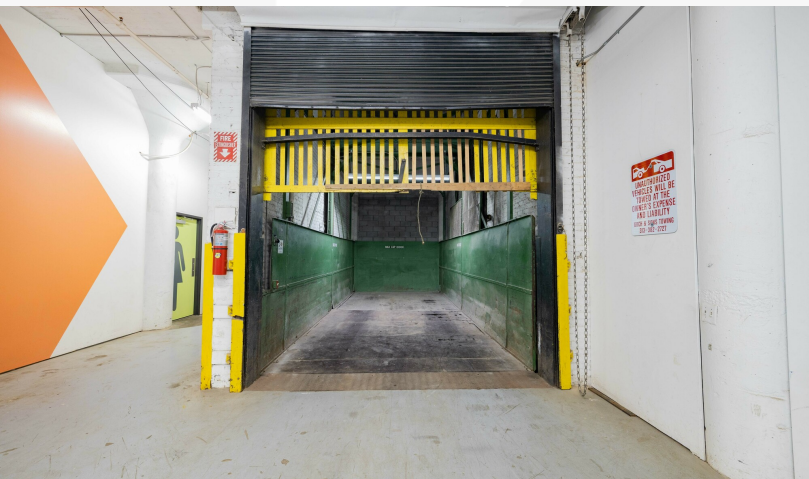


## Additional Photos





## Additional Photos





## Location Maps

