

# EXECUTIVE OFFICES "VILLAGE SUITES" CO-OFFICING

27 RAHLING CIRCLE  
LITTLE ROCK, AR 72223

---

Camme Fell  
Associate Advisor  
O: 501.374.7222  
[camme.fell@svn.com](mailto:camme.fell@svn.com)

# Lease ONE Or ALL Remaining Offices And Cubicles



## OFFERING SUMMARY

Available SF: 169-797 SF

Executive Office

Lease Rate: \$700.00-\$2950  
Monthly  
(Full Service)

Lot Size: 3 Acres

Total Suite Size: 4,000 SF

## PROPERTY OVERVIEW

- LEASE ONE OR TAKE ALL REMAINING TOGETHER!  
-SINGLE Executive suites available in the heart of Chenal Valley!  
-The Village of-Rahling Road on the SE corner of Chenal Parkway/ Rahling Road has been called one of the best corners in the South.

-Executive office suite available with high levels of attention to detail. ALL UTILITIES INCLUDED! FREE WIFI! COMMON CONFERENCE ROOM!UPSCALE FULL KITCHEN BREAKROOM! LARGE RESTROOMS! 24 HOUR ACCESS KEY CARD! COPIER AVAILABLE WITH CODE!

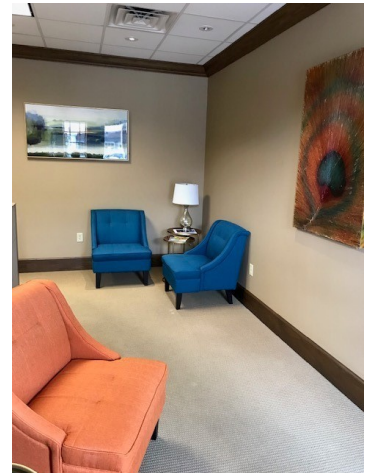
-Anchor tenants include the new Hot Springs sensation "Bones Chophouse Steaks". "Samu" sushi bar. "O Looneys" upscale liquor store specializing in unique wines and beverages. And hot spot lunch and happy hour at "Cantina Cinco DeMayo" restaurant .

-Executive tenants of Insurance, Lawyers, Architect, Title Co, Aesthetics and Beauty, Mortgage, Investments, and Commercial Brokerage.  
-Ample parking and centrally located in the heart of Chenal.

**\*\*CO-OFFICING SCENARIO\*\***



# Additional Photos



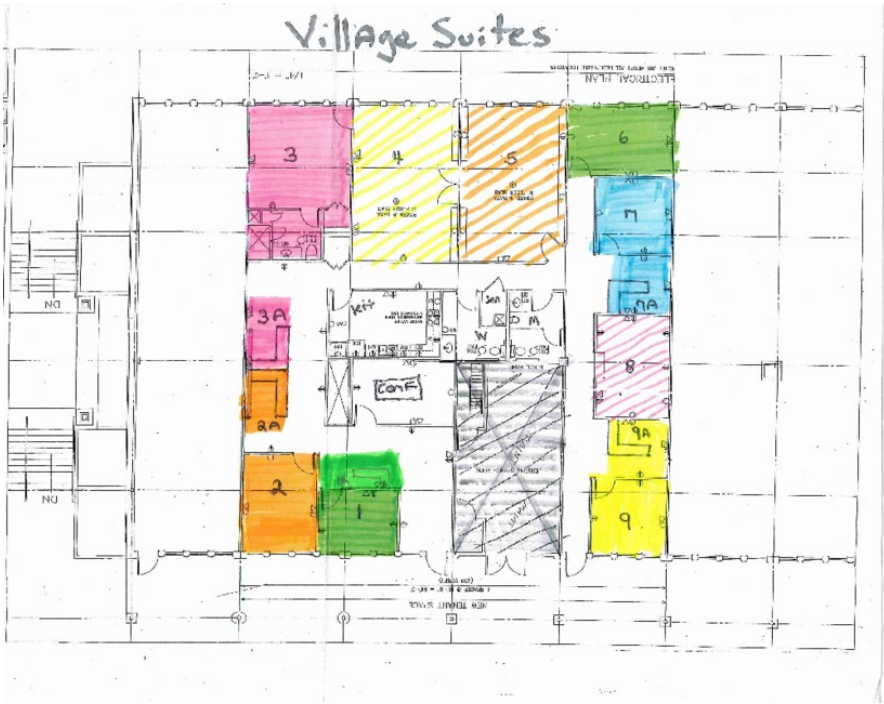
# Available Spaces

LEASE TYPE | -

TOTAL SPACE | Fully Leased

LEASE TERM | Negotiable

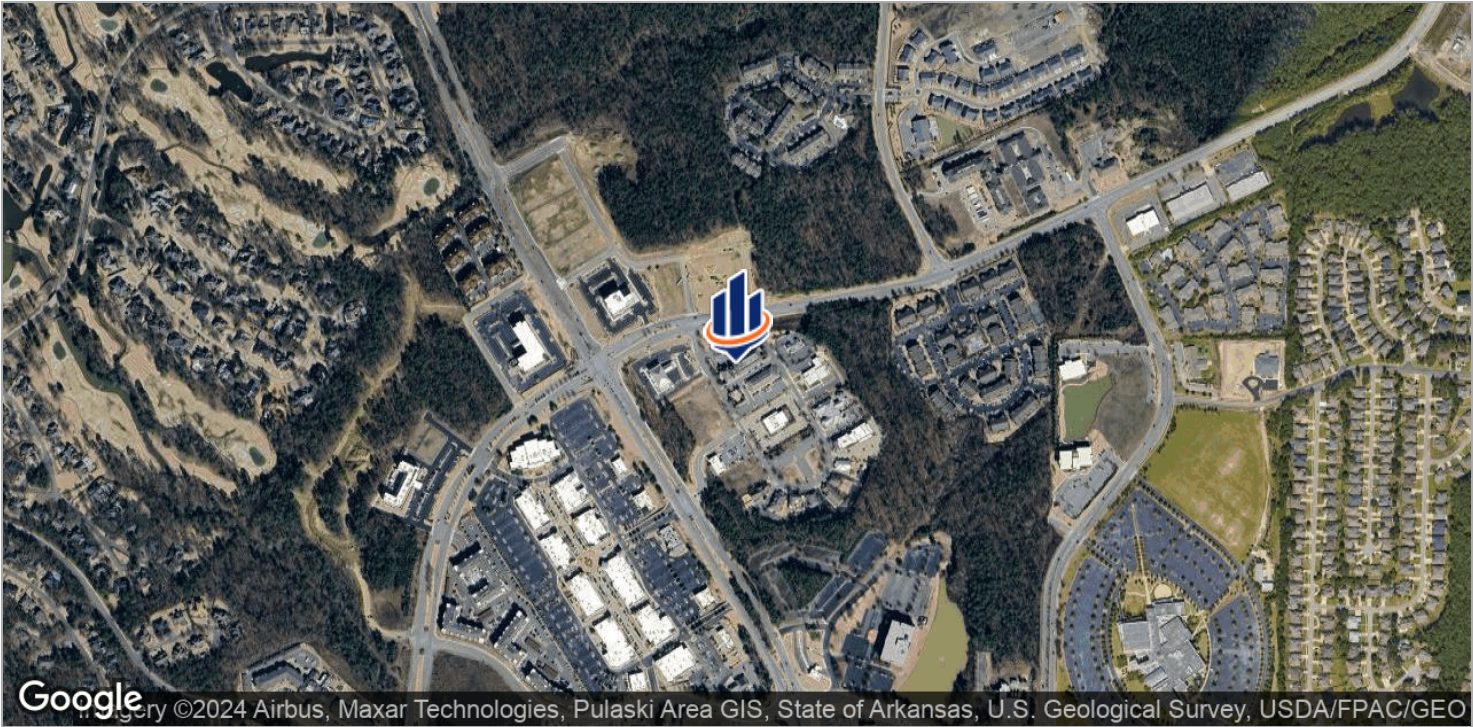
LEASE RATE | Negotiable



SUITE	TENANT	SIZE (SF)	LEASE TYPE	LEASE RATE	DESCRIPTION
VILLAGE SUITES 27 D Rahling Circle Suite 1-1A	Standard Development	169 SF	Full Service	\$750 per month	-
VILLAGE SUITES 27 D Rahling Circle Suite 7-7A	Standard Development Company	226 SF	Full Service	\$750 per month	-
VILLAGE SUITES 27 D Rahling Circle Suite 8	Standard Development Company	176 SF	Full Service	\$700 per month	-



# Location Maps





# Retailer Map



501-499-4739 Camme Fell



**CAMME FELL**

Associate Advisor

camme.fell@svn.com

**Direct:** 501.374.7222 | **Cell:** 501.507.8426

AR #SA00076597

**SVN | ArkBest Realty, LLC**

724 Garland Street  
Little Rock, AR 72201  
501.320.5124