

For Sale

Multifamily

0 SF



Ark Homes

1-A Sherwood Forest Ln
Rockdale, Texas 76567

Property Description

Now available for sale in Rockdale, TX:

Ark Homes & San Gabriel Mobile Home & RV Park.

Two mobile home parks within one mile of the other with recently renovated homes.

Ark Homes sits on 39.516 wooded acres at the intersection of Highways 79 & 77. The park contains 80 developed lots with ample space between homes.

San Gabriel sits on 3.949 acres and has 12 park-owned homes + an RV, storage building, and two container storage units.

Located in Central Texas between Austin and College Station.

OFFERING SUMMARY

Sale Price	\$1,900,000
Lot Size	38 Total Acres

DEMOGRAPHICS

Stats	Population	Avg. HH Income
1 Mile	48	\$68,316
10 Miles	6,195	\$60,459
30 Miles	68,061	\$57,275

For more information

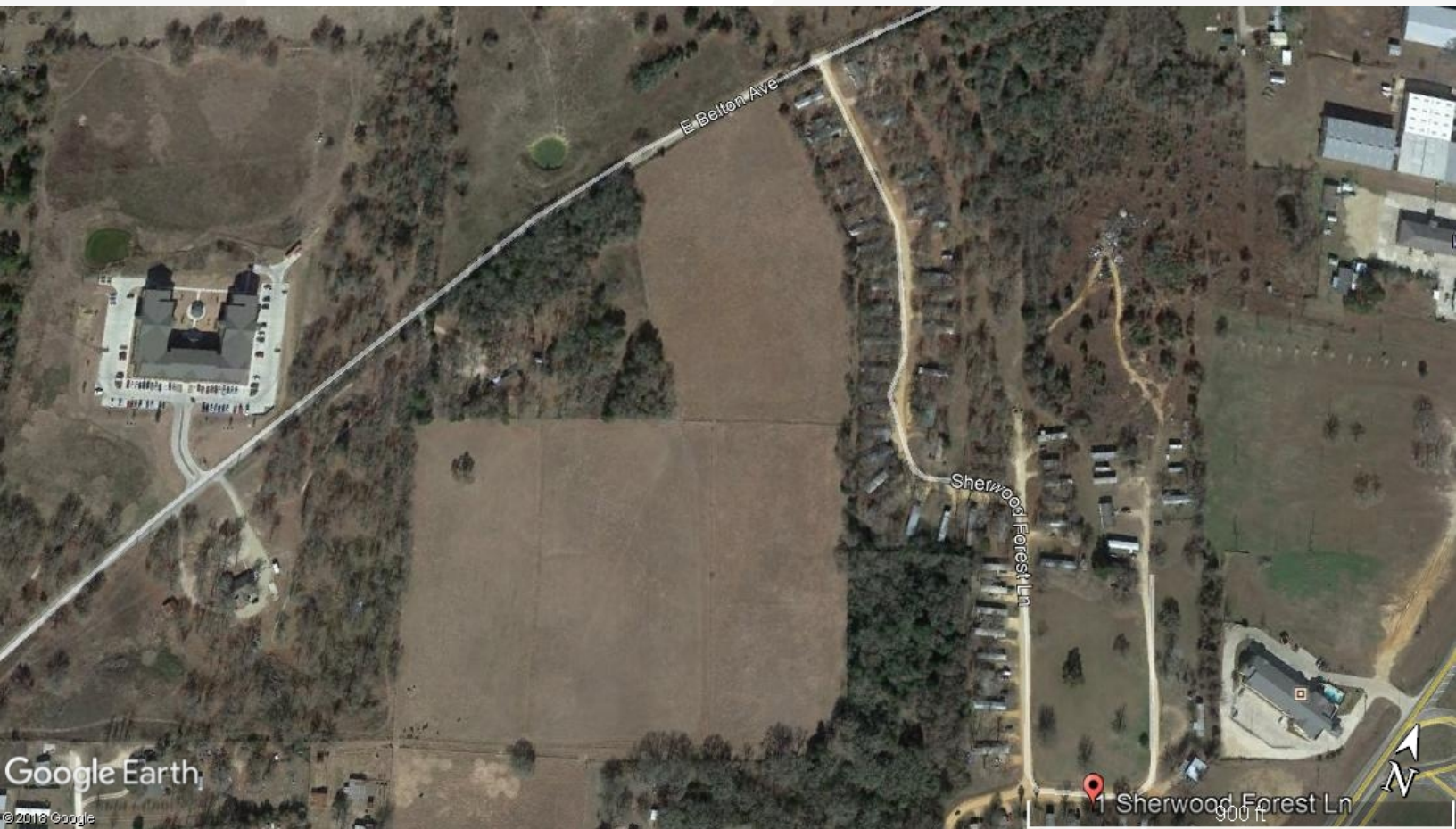
Jerry Brewer

O: 903 793 2666
jerry@amreal.com

Additional Photos



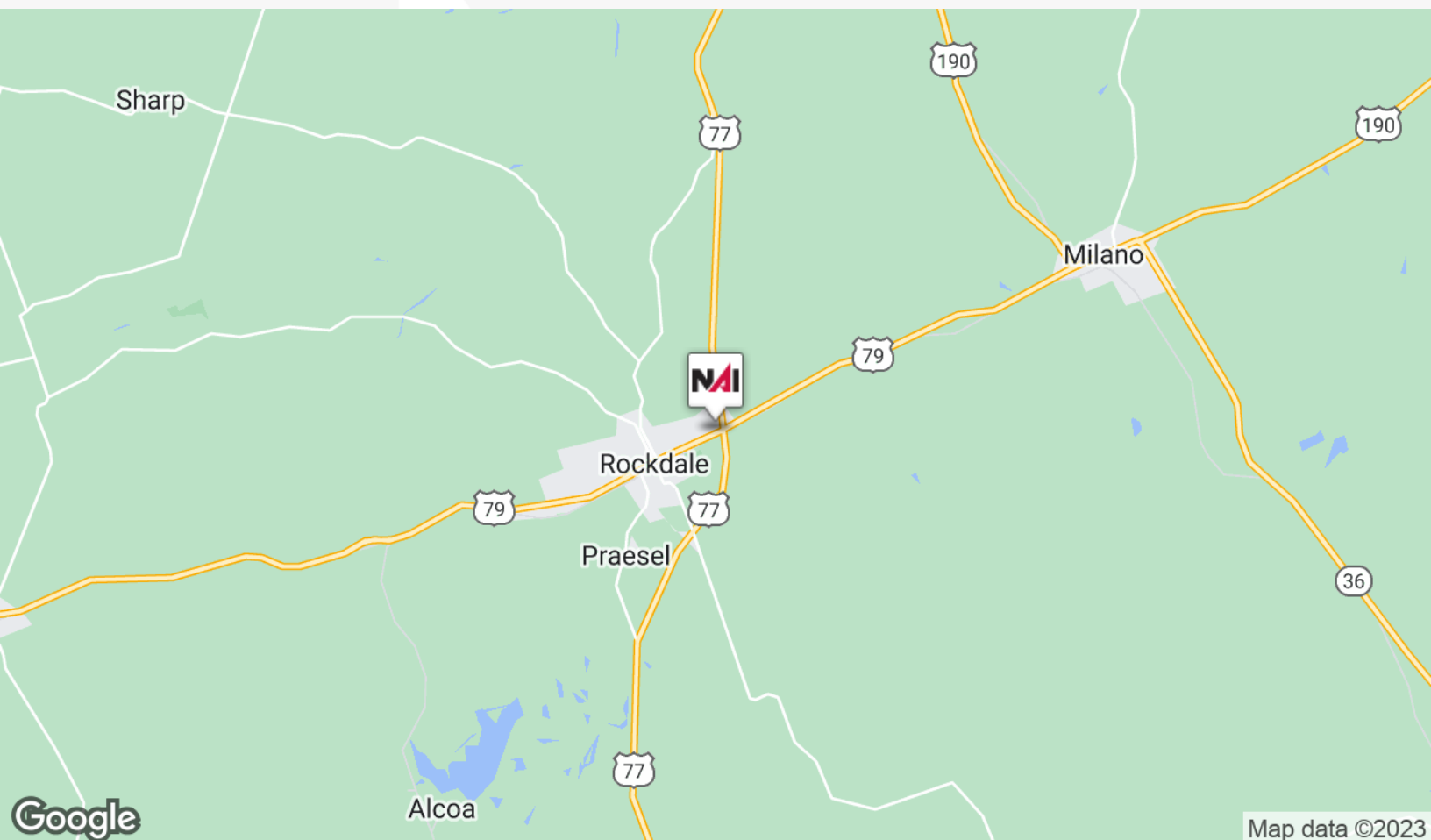
Additional Photos



For Sale

Multifamily Property

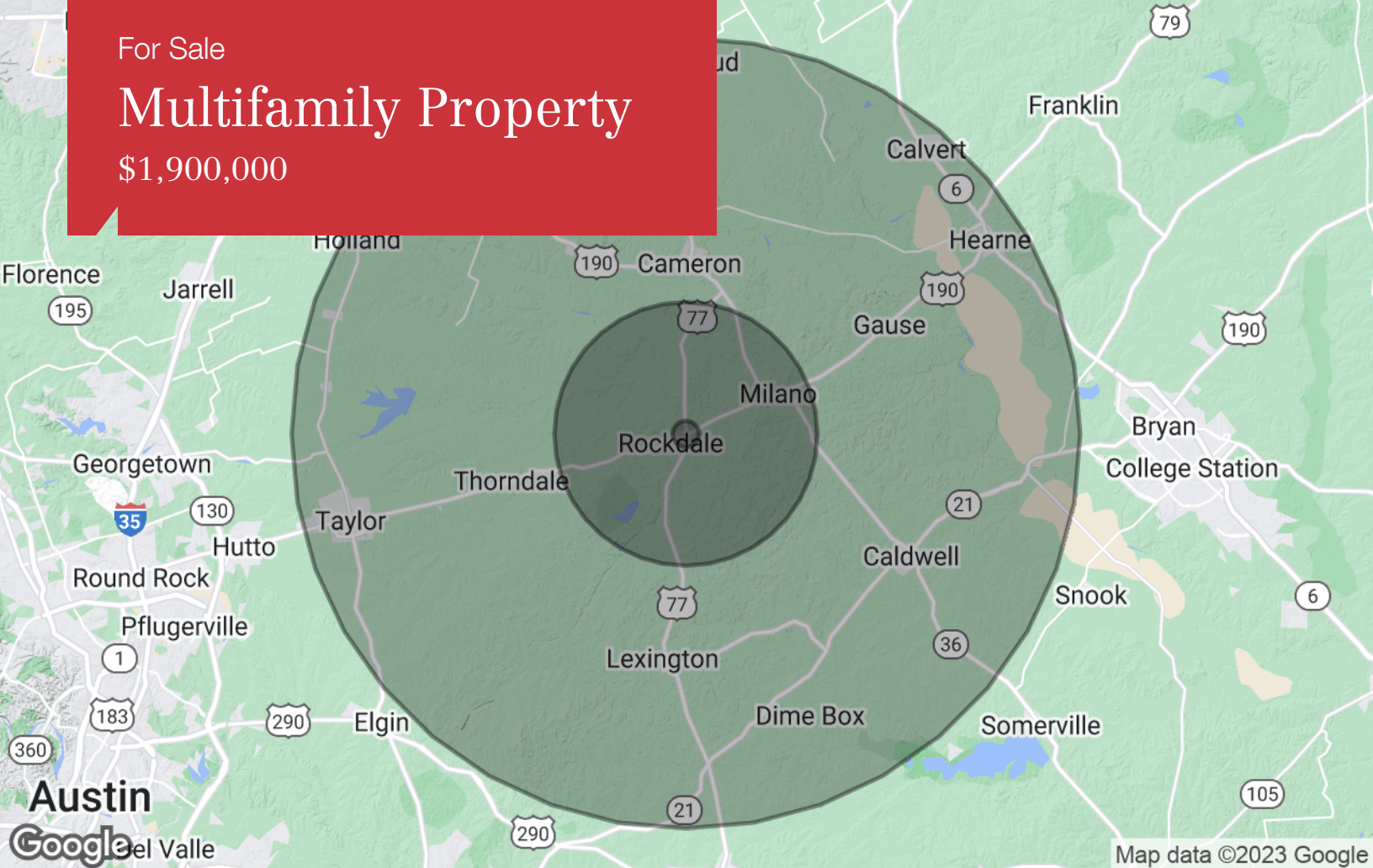
\$1,900,000



For Sale

Multifamily Property

\$1,900,000



Population

	1 Mile	10 Miles	30 Miles
TOTAL POPULATION	48	6,195	68,061
MEDIAN AGE	44.3	41.9	40.5
MEDIAN AGE (MALE)	41.9	40.5	39.2
MEDIAN AGE (FEMALE)	48.3	43.8	41.9

Households & Income

	1 Mile	10 Miles	30 Miles
TOTAL HOUSEHOLDS	18	2,357	25,590
# OF PERSONS PER HH	2.7	2.6	2.7
AVERAGE HH INCOME	\$68,316	\$60,459	\$57,275
AVERAGE HOUSE VALUE	\$149,830	\$148,752	\$138,282

Race

	1 Mile	10 Miles	30 Miles
% WHITE	91.4%	86.2%	82.6%
% BLACK	4.3%	6.8%	10.1%
% ASIAN	0.0%	0.0%	0.2%
% HAWAIIAN	0.0%	0.0%	0.0%
% INDIAN	0.0%	0.1%	0.2%
% OTHER	4.3%	6.9%	6.9%

Ethnicity

	1 Mile	10 Miles	30 Miles
% HISPANIC	16.7%	17.6%	21.2%

* Demographic data derived from 2020 ACS - US Census