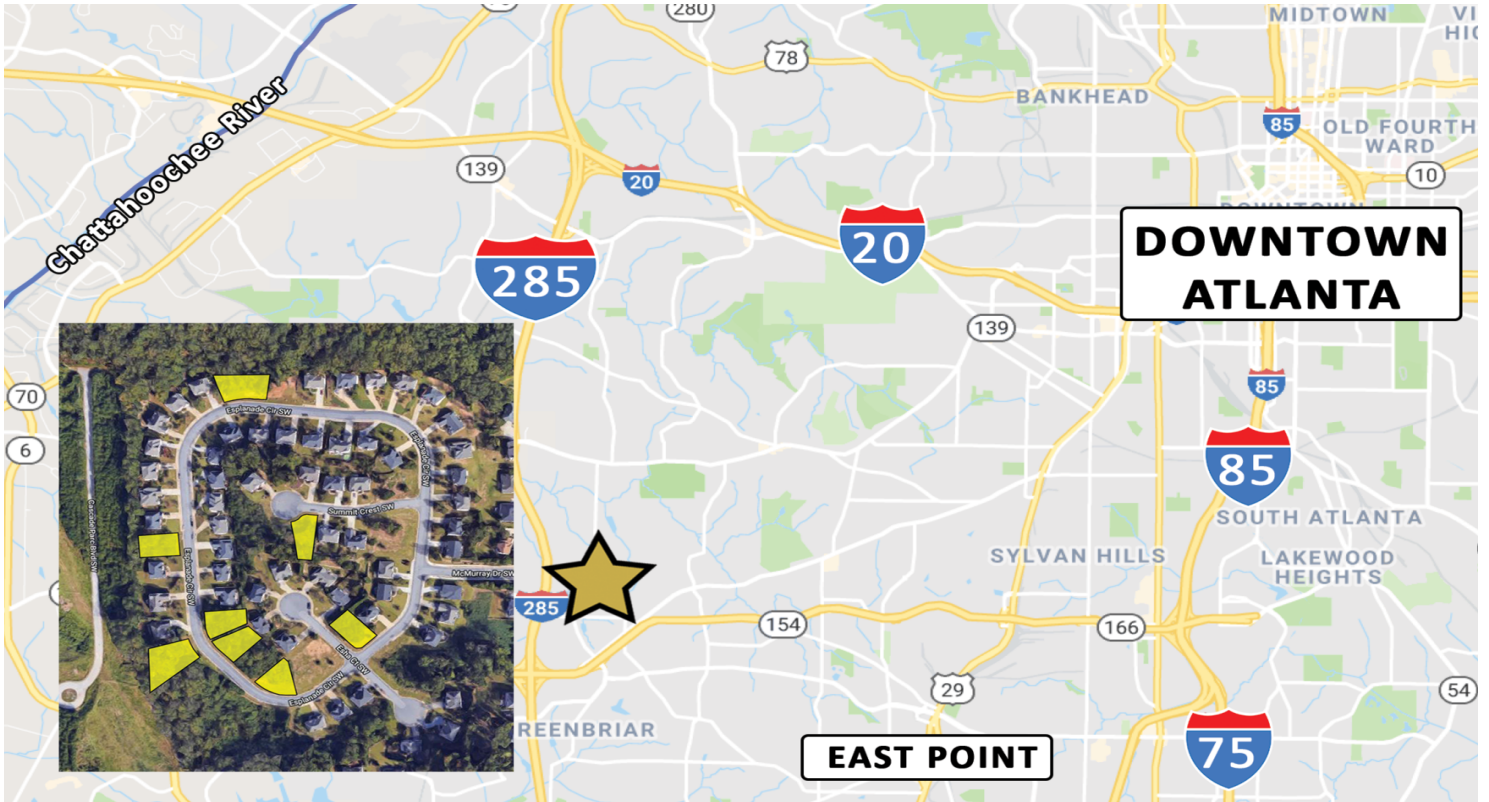


8 RESIDENTIAL LOTS IN WEST ATLANTA

8 LOTS ESHA COURT

ATLANTA, GA 30311

FOR SALE



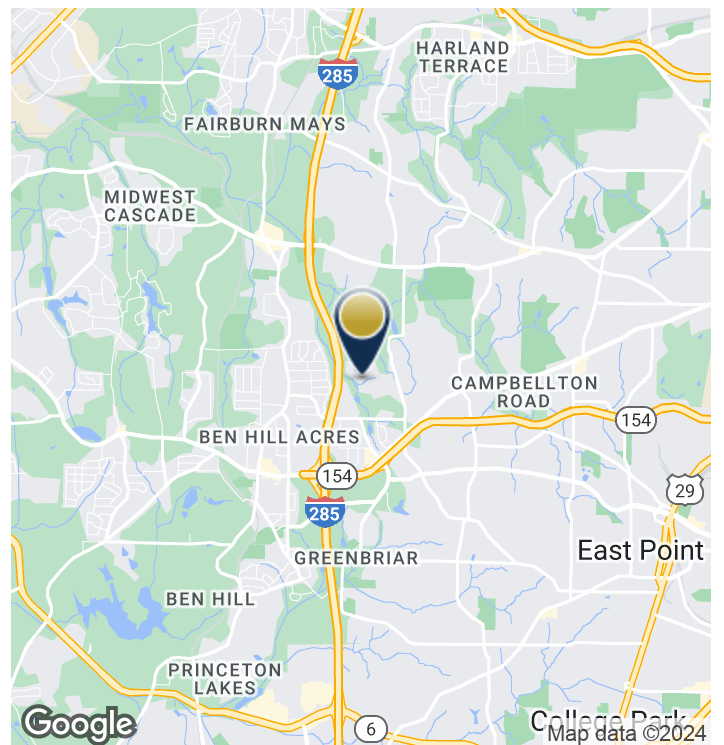
PROPERTY HIGHLIGHTS

- 8 R-3 (residential) zoned lots available
- Offered for sale at \$19,500/developed lot
- Streets and all utilities in place
- Elementary: Kimberly Elementary School
- Middle: Bunche Middle School
- High: Therrell High School

LOCATION OVERVIEW

This property is situated inside the Perimeter, 1 mile from I-285, 5-miles from I-20 and 20 minutes west of Downtown Atlanta.

Covenants, Conditions and Restrictions Document:
<http://ow.ly/A1HA30mCyUX>



PERRY HAYES | 404-876-1640 x135 | Perry@BullRealty.com

BULLREALTY.COM

Information contained herein may have been provided by the seller, landlord or other outside sources. While deemed reliable, it may be estimated, projected, limited in scope and is subject to change or inaccuracies. Pertinent information should be independently confirmed prior to lease or purchase offer or within an applicable due diligence period.

8 RESIDENTIAL LOTS | Georgia | 1 of 3

8 RESIDENTIAL LOTS IN WEST ATLANTA

8 LOTS ESHA COURT ATLANTA, GA 30311

FOR SALE

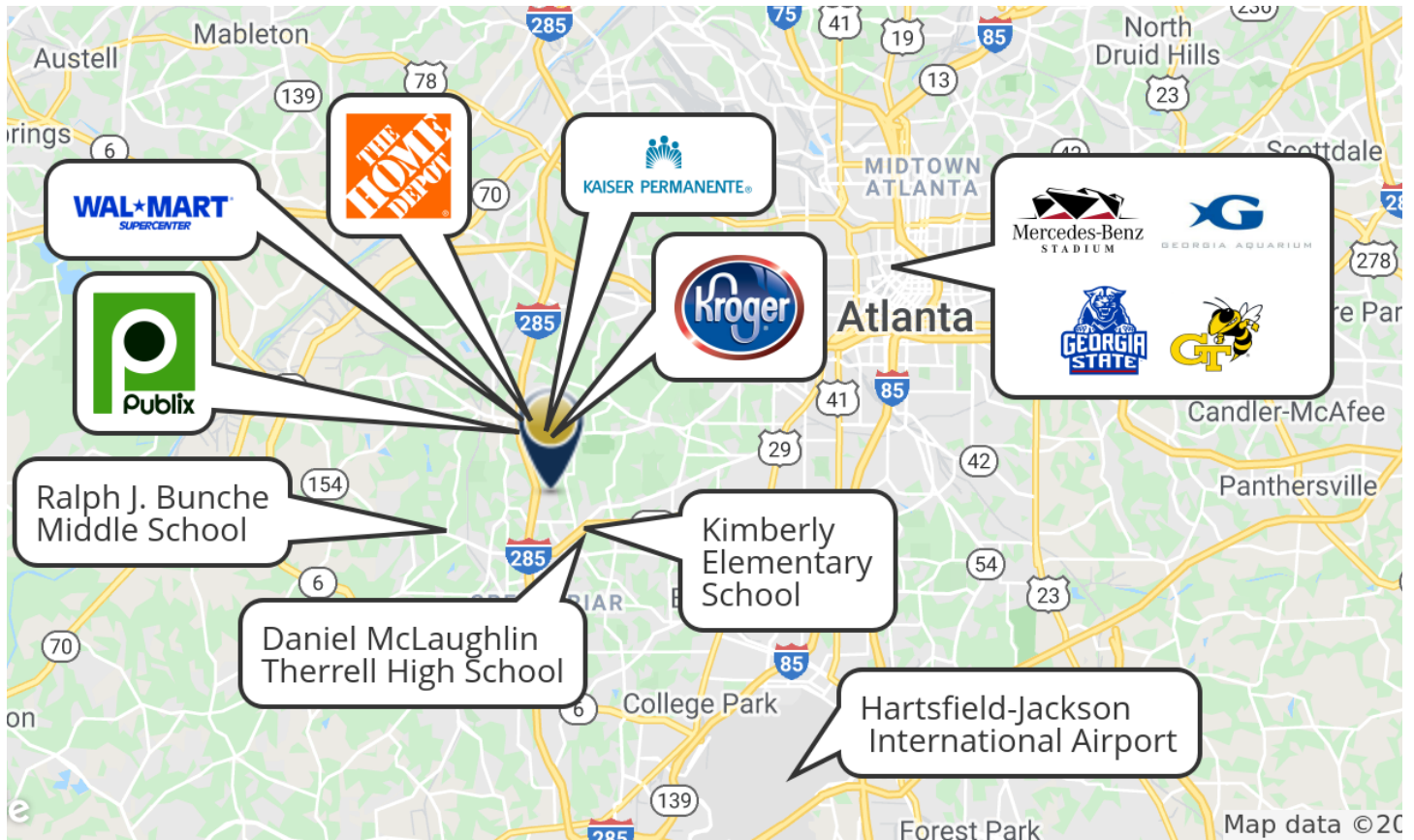
DEMOGRAPHICS

	1 Mile	3 Miles	5 Miles
Total Households:	2,132	22,659	62,191
Total Population:	5,354	56,182	157,277
Average HH Income:	\$55,681	\$53,807	\$48,104

*Data derived from ESRI



IN THE AREA



PERRY HAYES | 404-876-1640 x135 | Perry@BullRealty.com

BULLREALTY.COM

Information contained herein may have been provided by the seller, landlord or other outside sources. While deemed reliable, it may be estimated, projected, limited in scope and is subject to change or inaccuracies. Pertinent information should be independently confirmed prior to lease or purchase offer or within an applicable due diligence period.

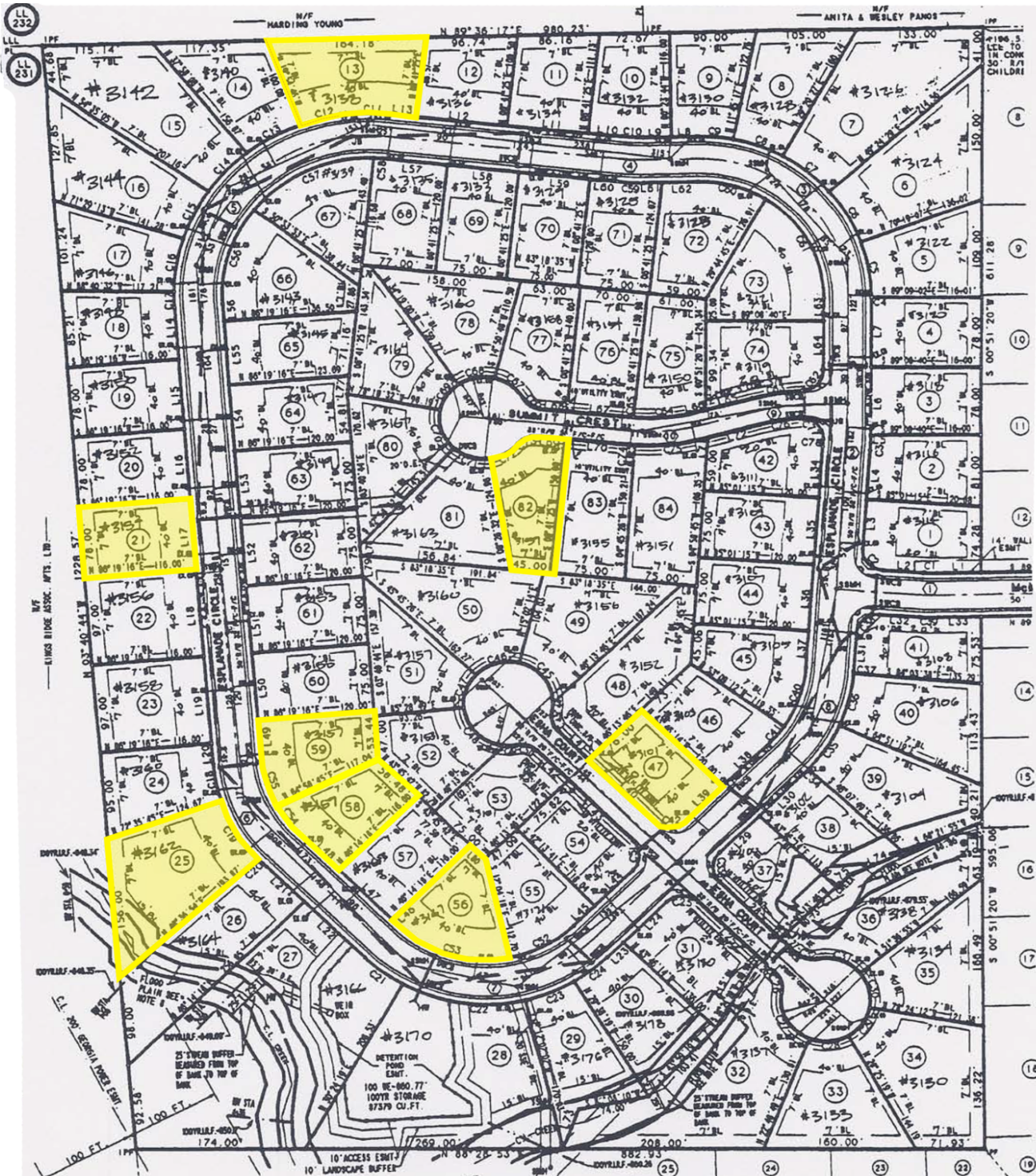
8 RESIDENTIAL LOTS | Georgia | 2 of 3

8 RESIDENTIAL LOTS IN WEST ATLANTA

8 LOTS ESHA COURT

ATLANTA, GA 30311

FOR SALE



8 RESIDENTIAL LOTS | Georgia | 3 of 3



PERRY HAYES | 404-876-1640 x135 | Perry@BullRealty.com

BULLREALTY.COM

Information contained herein may have been provided by the seller, landlord or other outside sources. While deemed reliable, it may be estimated, projected, limited in scope and is subject to change or inaccuracies. Pertinent information should be independently confirmed prior to lease or purchase offer or within an applicable due diligence period.