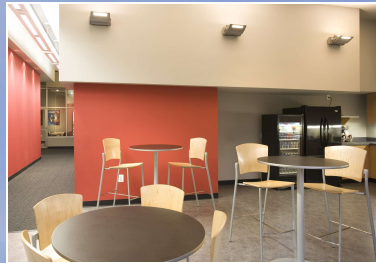


PROPERTY OVERVIEW

HOLLINS FERRY ONE

4730 HOLLINS FERRY ROAD, BALTIMORE, MD 21227



Building Information

- Minutes from I-695, I-95 and I-295
- Located in the Southwest Enterprise Zone
- 42,458 SF building
- One-story brick construction
- 20' clear ceiling height
- 11 docks
- 120/208 volt, 3-phase, 4-wire service
- Gas heat/public utilities
- Public transportation route
- 3½ miles to BWI Airport, Amtrak & Light Rail
- 8 miles to Ft. Meade
- 5 miles to Baltimore's marine terminal
- 0.8 miles to the Halethorpe MARC station
- Baltimore County, MH zoning: manufacturing, warehousing, office



Surrounding Amenities

- ALDI
- Bakery Express
- Bonfire Outdoor Charcoal Grill
- Burger King
- BWI Airport
- Chick-fil-A
- Exxon
- G&M Restaurant
- Guinness Open Gate Brewery
- Hardee's
- Panda Express
- Panera Bread
- Pieces of Eight Restaurant
- R/C Hollywood Cinema 4
- Royal Farms
- The Home Depot
- Walmart Supercenter
- Wawa
- Wendy's

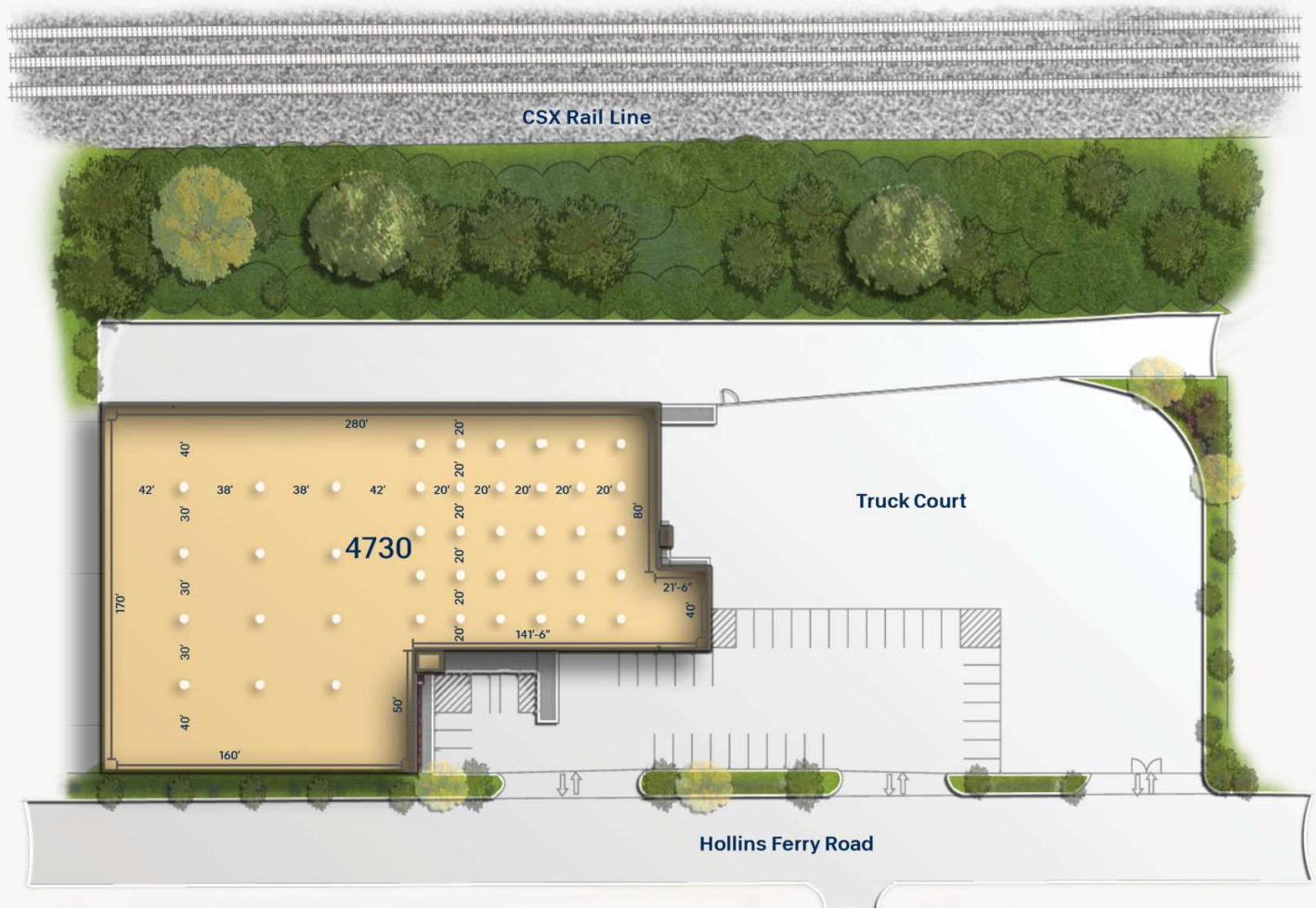
Site Plan

Hollins Ferry One

4730 Hollins Ferry Road

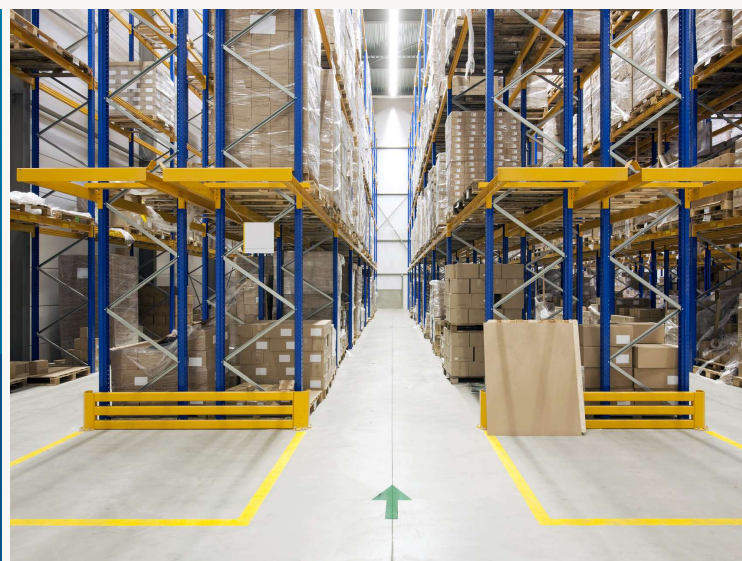
Light Industrial

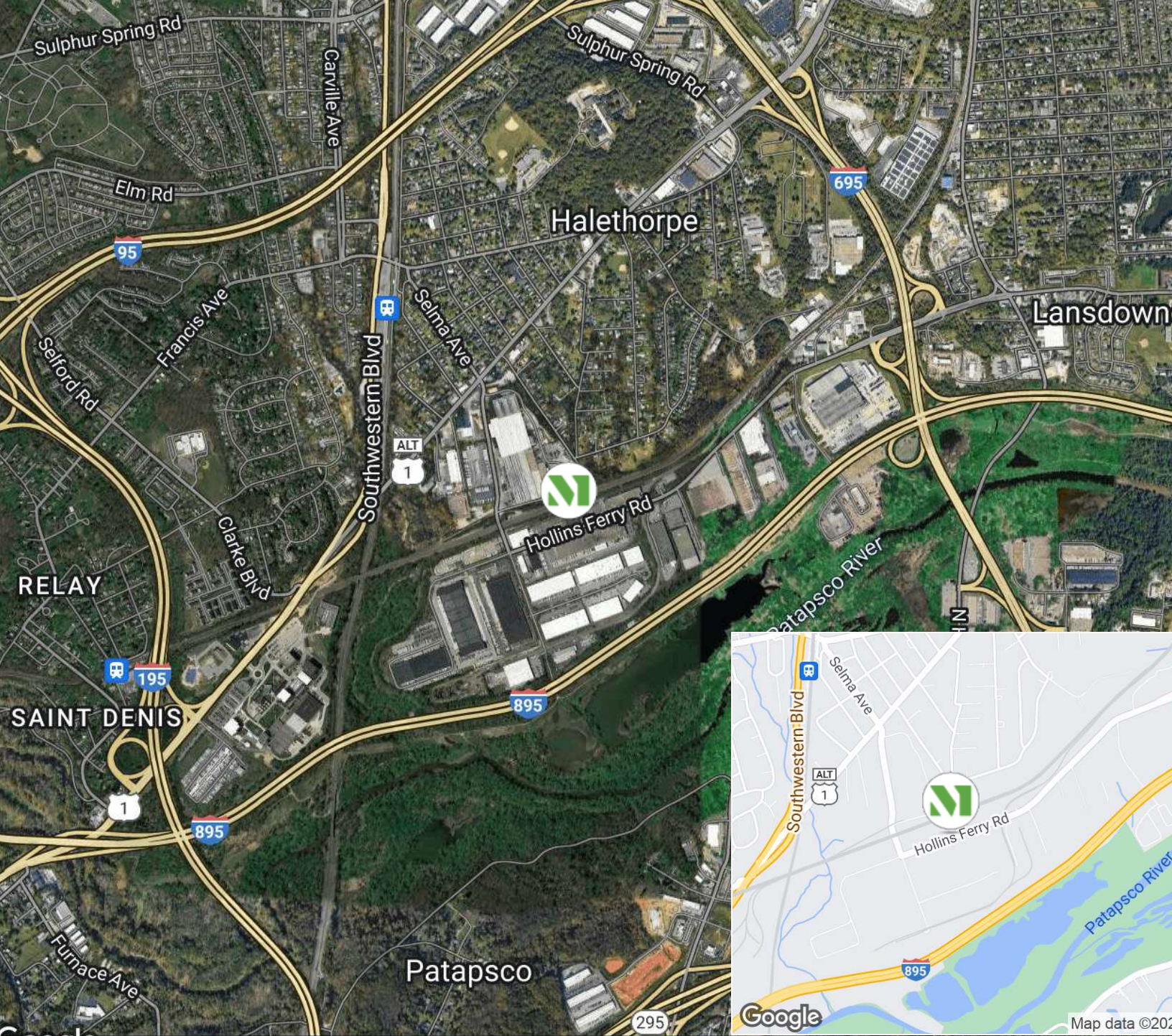
42,458 SF



“As our company grew, Merritt coordinated a seamless transition from a small warehouse to a sophisticated production facility. This flexibility allowed us to serve our clients better and continue our growth. Thank you, Merritt!”

JUDITH E. ANTISDEL
PRESIDENT
ANNE-TISDALE DIRECT





CREATING HOMES FOR BUSINESSES

Established in 1967, Merritt Properties is a privately held commercial real estate company offering over 21 million square feet of Class A office, flex, warehouse, industrial, retail and build-to-suit spaces throughout Maryland, Florida, North Carolina and Virginia. We design, build, lease and manage our properties for the long term with a commitment to providing the highest quality service to all of our customers.

For additional information or to schedule a tour, contact:

Vince Bagli | Elizabeth Allison | Jamie Campbell | Delfina Kelly

merrittproperties.com

MD: 410.298.2600 | VA: 703.858.2725 | NC: 919.526.0070 | FL: 904.515.2030

