

PROPERTY OVERVIEW

ELDERSBURG BUSINESS CENTER

1545 PROGRESS WAY, ELDERSBURG, MD 21784



Building Information

- Easy access to Route 26, Route 32 and I-695
- Stand-alone, 20,000 SF one-story office building with private offices, kitchenette and 7,132 SF of warehouse with ability for expansion
- ADA compliant restrooms
- 73 parking spaces with additional parking/loading available
- Easy school bus access and turnaround
- Playground optional for school and day care use
- One (1) at-grade drive in
- Sprinklered, gas heat and public water and sewer
- Professionally landscaped
- Carroll County, IR zoning



Surrounding Amenities

- ALDI
- Burger King
- Chick-fil-A
- Chili's Grill & Bar
- Chipotle Mexican Grill
- Denny's
- Domino's Pizza
- Dunkin'
- Five Guys
- Glory Days Grill
- Gold's Gym
- Hunan Garden
- J & Y Sushi
- Kohl's
- Ledo Pizza
- Liberatores Ristorante
- Martin's Food
- Noodles and Company
- Oscar's Alehouse
- Panera Bread
- Papa John's
- Pizza Hut
- Popeyes Louisiana Kitchen
- QDOBA Mexican Eats
- Rite Aid
- Roy Rogers
- Safeway
- Smoothie King
- Starbucks
- Subway
- Taco Bell
- The Home Depot
- The UPS Store
- Walgreens

Site Plan

Eldersburg Business Center

1545 Progress Way

1 - Story Special Purpose

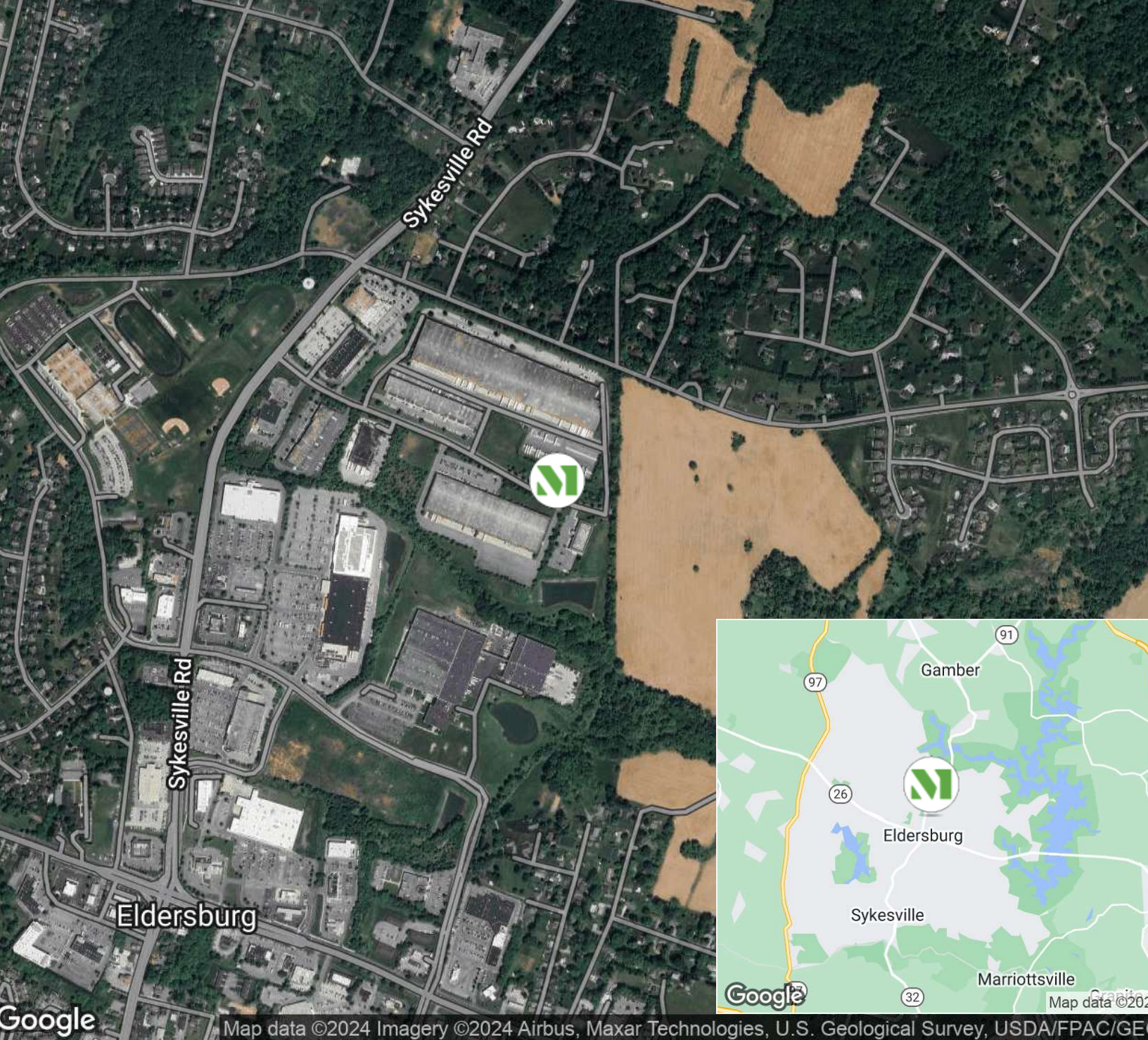
20,000 SF



“Merritt was incredibly accommodating. Doing business with a firm that - like ours - emphasizes integrity, quality and customer service was a pleasure.”

EDWARD J. NEMEC,
MANAGING PARTNER
NEW YORK LIFE





CREATING HOMES FOR BUSINESSES

Established in 1967, Merritt Properties is a privately held commercial real estate company offering over 21 million square feet of Class A office, flex, warehouse, industrial, retail and build-to-suit spaces throughout Maryland, Florida, North Carolina and Virginia. We design, build, lease and manage our properties for the long term with a commitment to providing the highest quality service to all of our customers.

For additional information or to schedule a tour, contact:

Whit Levering | Ashley Reimer | Lauren Lindsay

merrittproperties.com

MD: 410.298.2600 | VA: 703.858.2725 | NC: 919.526.0070 | FL: 904.515.2030

