



SHELL CONDITION MEDICAL OFFICE CONDOMINIUM FOR SALE

1397 GEORGE DIETER SUITE E
EL PASO, TX 79936

Laura Salome, CCIM
Managing Director
O: 915.544.6208
laurasalome@svn.com



Property Summary



OFFERING SUMMARY

Sale Price:	\$214,310
Lot Size:	1.24 Acres
Year Built:	2018
Space E	1478 SF
Zoning:	C1
Market:	East
Submarket:	Far East
Price / SF:	\$145.00

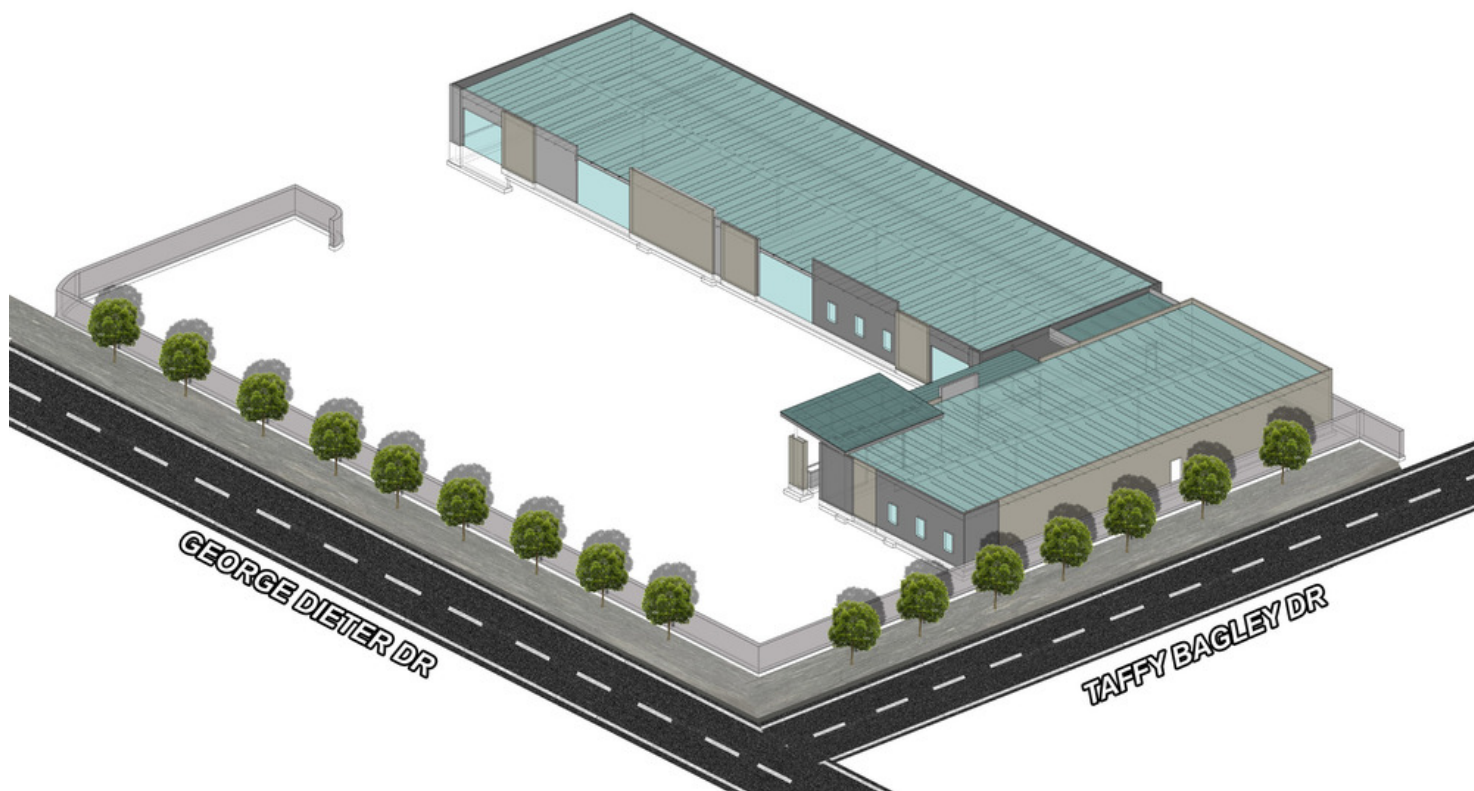
PROPERTY OVERVIEW

Fee Simple sale of newly constructed Medical Office Condominium. Property Owners Association fees will be billed monthly and will include common area utilities, management, parking lot, and landscape services, marquis sign maintenance, reserves, and common area taxes and insurance.

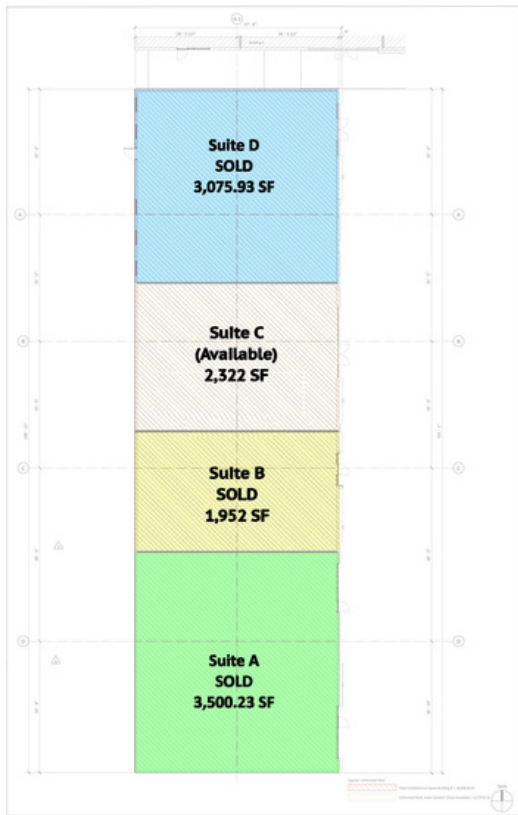
PROPERTY HIGHLIGHTS

- New Construction
- Price includes Grey Shell, Utilities up to building (all separately metered), and single angle roof frames as pre determined locations for HVAC Units
- Owners build Equity in Real Estate
- Medical, Retail, and Rooftops in Immediate Area
- Adjacent Highland Rehab Hospital and Across Foundations Hospital
- In between Del Sol Hospital and Sierra Providence East Hospital
- Minutes from I-10 and Montana
- Affordable Property Owner Association Fees

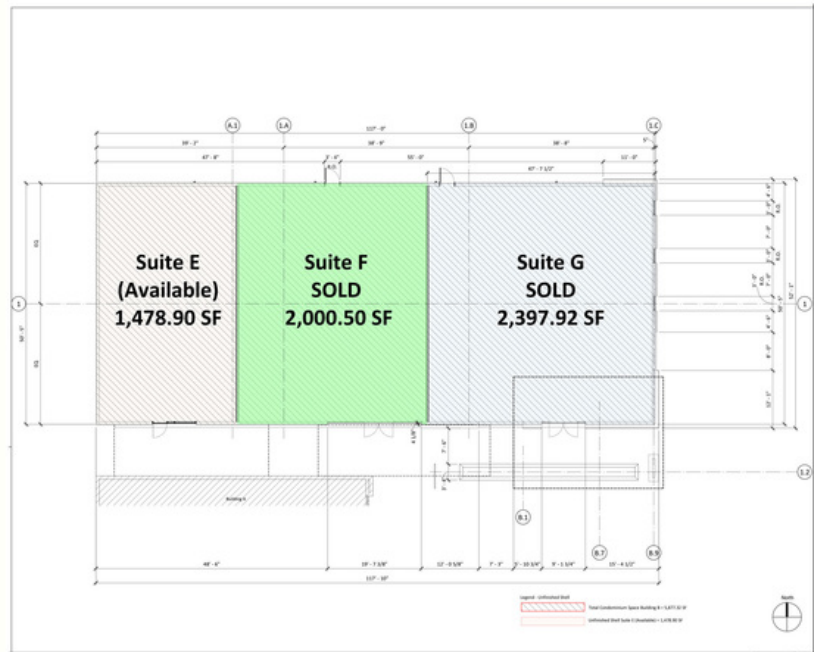
Additional Photos



Floor Plans



**FLOOR PLAN
BUILDING A**



**FLOOR PLAN
BUILDING B**

Additional Photos

