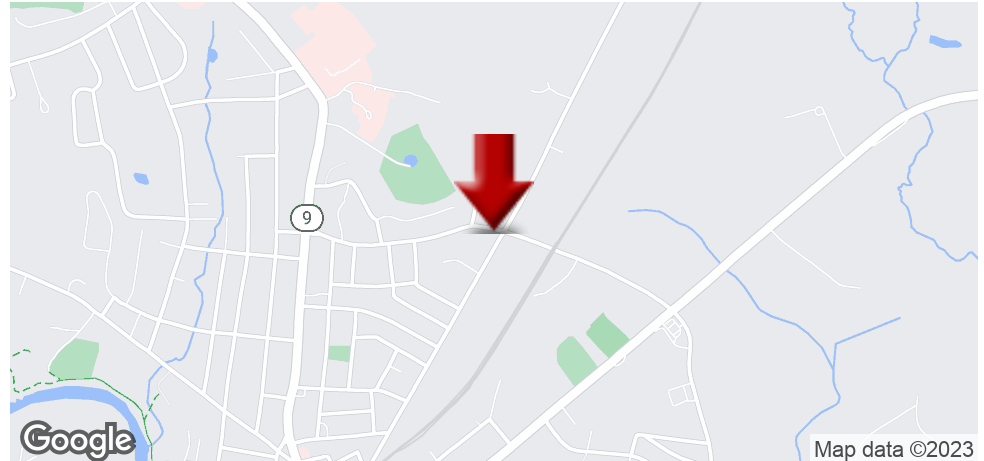


# OFFICE FOR LEASE

142 Broadway Street, Dover, NH 03820



## OFFERING SUMMARY

NUMBER OF UNITS:	1
AVAILABLE SF:	
LEASE RATE:	Negotiable
LOT SIZE:	0.4 Acres
BUILDING SIZE:	1,300
ZONING:	CBD

## PROPERTY OVERVIEW

Office and/or retail available in busy downtown Dover located at intersection of Broadway and Oak Street. In this downtown area, residents enjoy a broad choice of cafes, shops, taverns, and many other small businesses housed in beautifully preserved historic buildings and the central mills. This space is ideal for all types of service related businesses and other office clientele. This lease includes utilities and other expenses and is available for lease immediately.

## PROPERTY HIGHLIGHTS

**KELLER WILLIAMS COASTAL REALTY**  
603.610.8500  
750 Lafayette Rd.,  
Suite 201 - Coastal Land & Commercial Group  
Portsmouth, NH 03801

**DAVE GARVEY**  
Managing Director  
O: 603.610.8523  
C: 603.491.2854  
davegarvey@kwcommercial.com  
NH #004637

**ETHAN ASH**  
Commercial & Investment Specialist, MICP  
O: +16036108500 X1430  
C: 603.707.2319  
ethan.ash@kw.com  
NH #071469

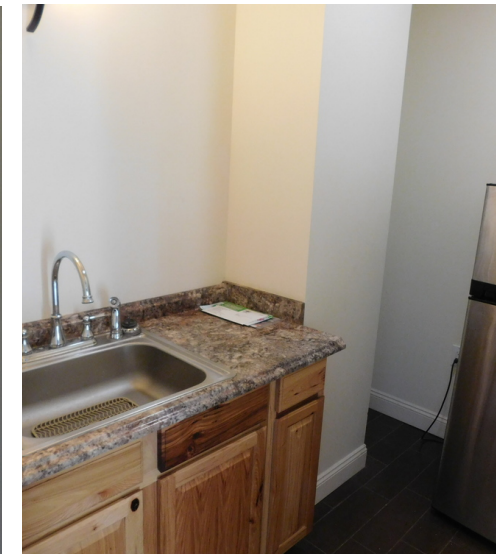
Each Office Independently Owned and Operated [kwclcg.com/](http://kwclcg.com/)

We obtained the information above from sources we believe to be reliable. However, we have not verified its accuracy and make no guarantee, warranty or representation about it. It is submitted subject to the possibility of errors, omissions, change of price, rental or other conditions, prior sale, lease or financing, or withdrawal without notice. We include projections, opinions, assumptions or estimates for example only, and they may not represent current or future performance of the property. You and your tax and legal advisors should conduct your own investigation of the property and transaction.

OFFICE FOR LEASE

# OFFICE FOR LEASE

142 Broadway Street, Dover, NH 03820



**KELLER WILLIAMS COASTAL REALTY**  
603.610.8500  
750 Lafayette Rd.,  
Suite 201 - Coastal Land & Commercial Group  
Portsmouth, NH 03801

**DAVE GARVEY**  
Managing Director  
O: 603.610.8523  
C: 603.491.2854  
davegarvey@kwcommercial.com  
NH #004637

**ETHAN ASH**  
Commercial & Investment Specialist, MICP  
O: +16036108500 X1430  
C: 603.707.2319  
ethan.ash@kw.com  
NH #071469

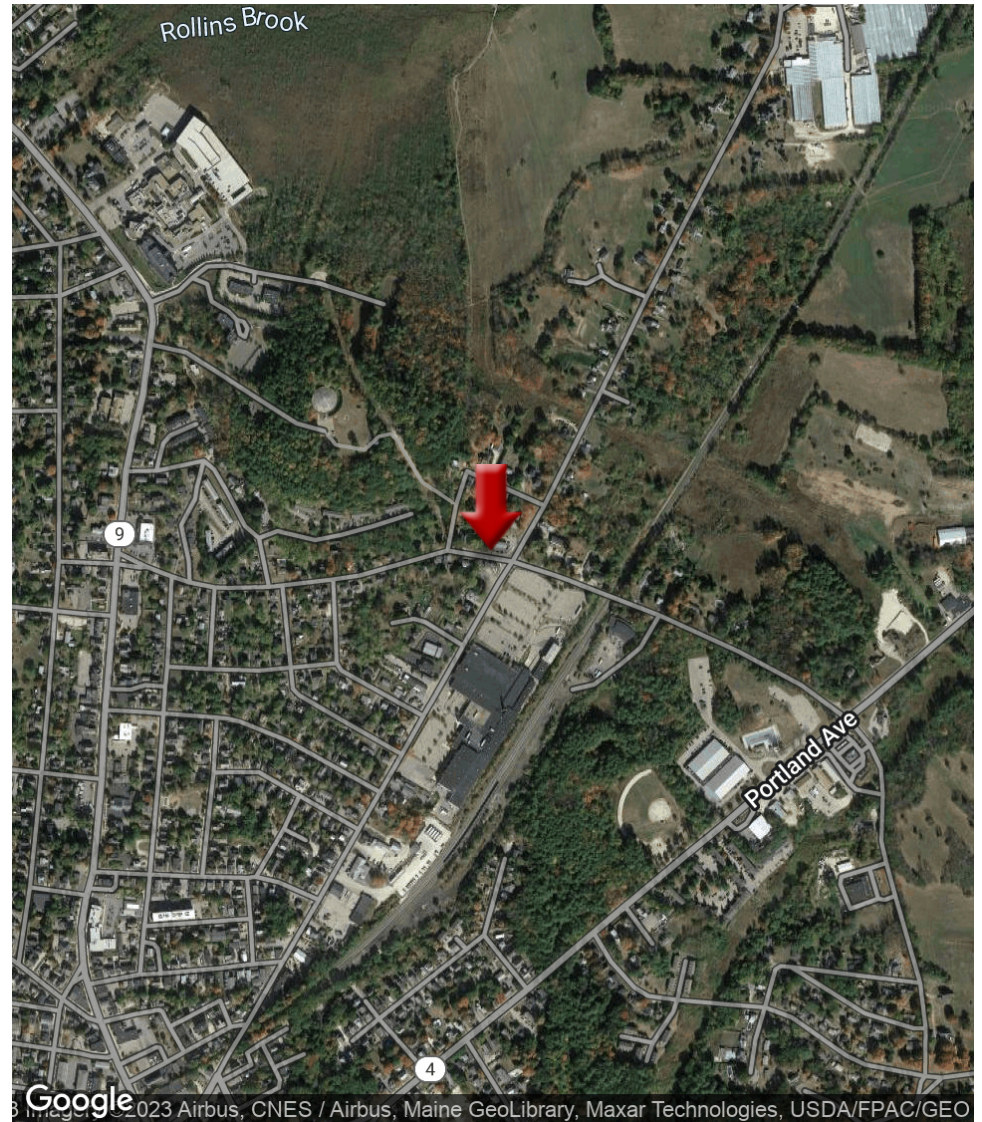
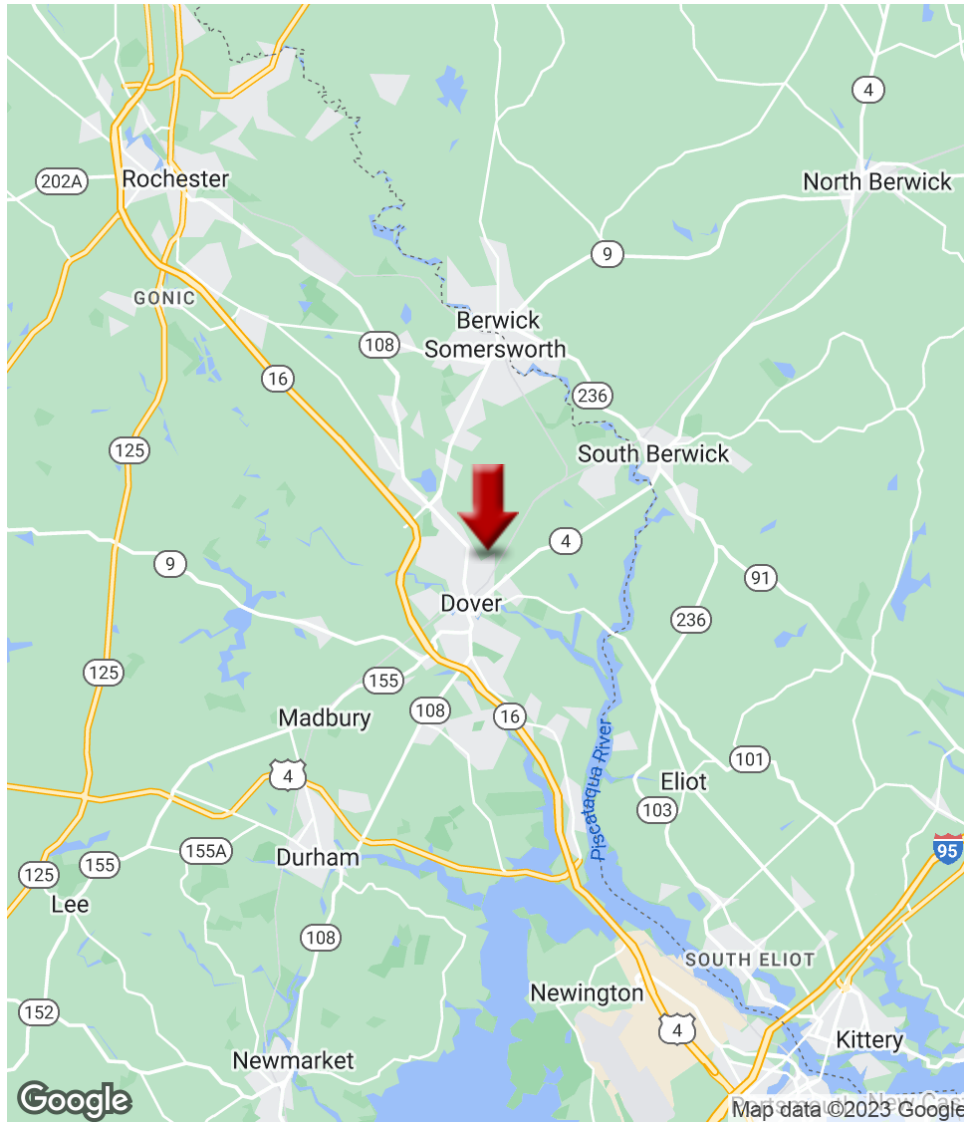
Each Office Independently Owned and Operated [kwclcg.com/](http://kwclcg.com/)

We obtained the information above from sources we believe to be reliable. However, we have not verified its accuracy and make no guarantee, warranty or representation about it. It is submitted subject to the possibility of errors, omissions, change of price, rental or other conditions, prior sale, lease or financing, or withdrawal without notice. We include projections, opinions, assumptions or estimates for example only, and they may not represent current or future performance of the property. You and your tax and legal advisors should conduct your own investigation of the property and transaction.



# OFFICE FOR LEASE

142 Broadway Street, Dover, NH 03820



**KELLER WILLIAMS COASTAL REALTY**  
603.610.8500  
750 Lafayette Rd.,  
Suite 201 - Coastal Land & Commercial Group  
Portsmouth, NH 03801

**DAVE GARVEY**  
Managing Director  
O: 603.610.8523  
C: 603.491.2854  
davegarvey@kwcommercial.com  
NH #004637

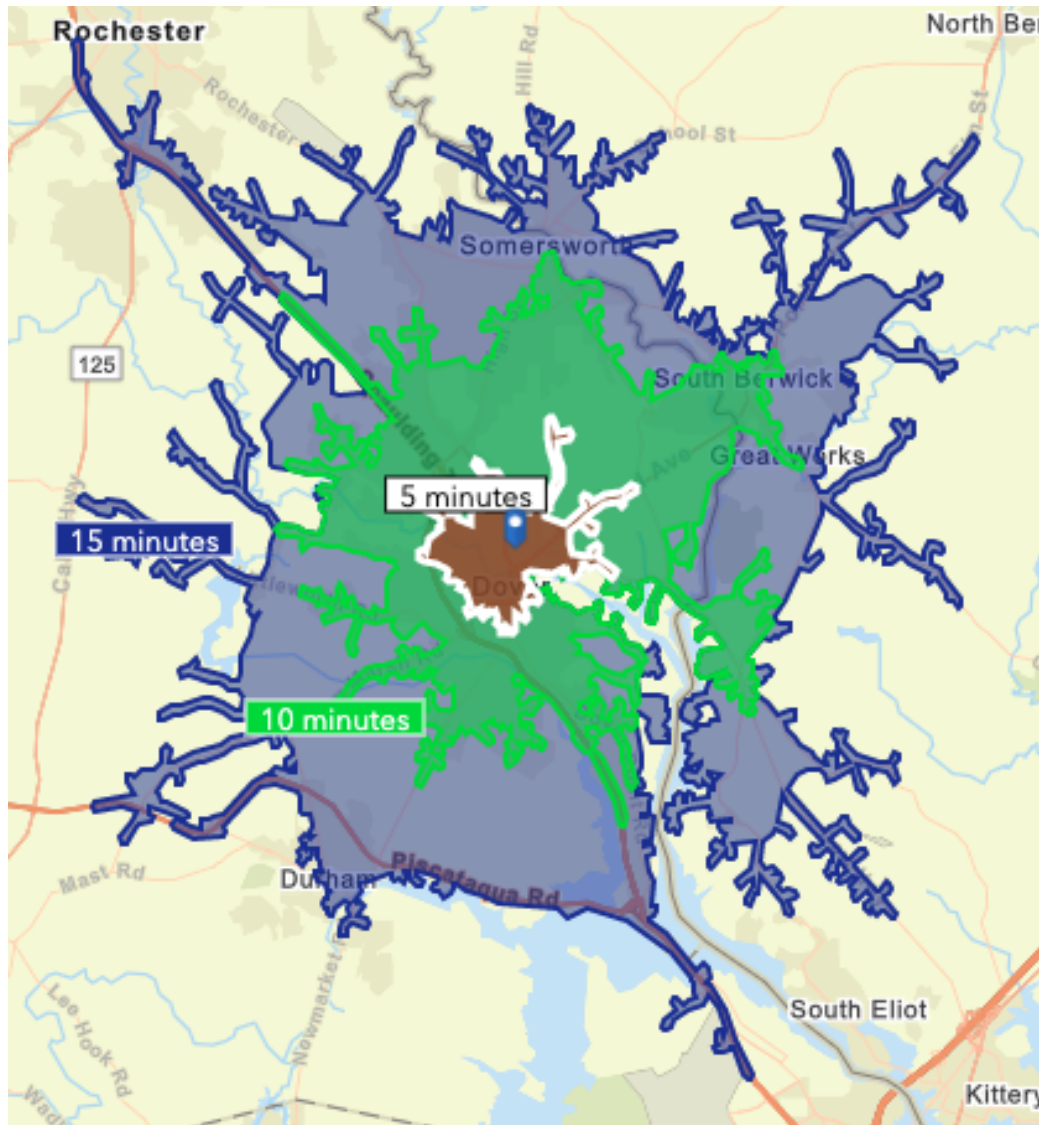
**ETHAN ASH**  
Commercial & Investment Specialist, MICP  
O: +16036108500 X1430  
C: 603.707.2319  
ethan.ash@kw.com  
NH #071469

Each Office Independently Owned and Operated [kwclcg.com/](http://kwclcg.com/)

We obtained the information above from sources we believe to be reliable. However, we have not verified its accuracy and make no guarantee, warranty or representation about it. It is submitted subject to the possibility of errors, omissions, change of price, rental or other conditions, prior sale, lease or financing, or withdrawal without notice. We include projections, opinions, assumptions or estimates for example only, and they may not represent current or future performance of the property. You and your tax and legal advisors should conduct your own investigation of the property and transaction.

# DEMOGRAPHICS MAP

142 Broadway Street, Dover, NH 03820



**KELLER WILLIAMS COASTAL REALTY**  
603.610.8500  
750 Lafayette Rd.,  
Suite 201 - Coastal Land & Commercial Group  
Portsmouth, NH 03801

**DAVE GARVEY**  
Managing Director  
O: 603.610.8523  
C: 603.491.2854  
davegarvey@kwcommercial.com  
NH #004637

**ETHAN ASH**  
Commercial & Investment Specialist, MICP  
O: +16036108500 X1430  
C: 603.707.2319  
ethan.ash@kw.com  
NH #071469

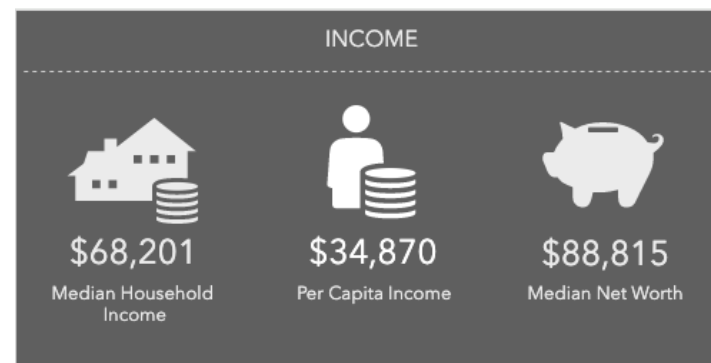
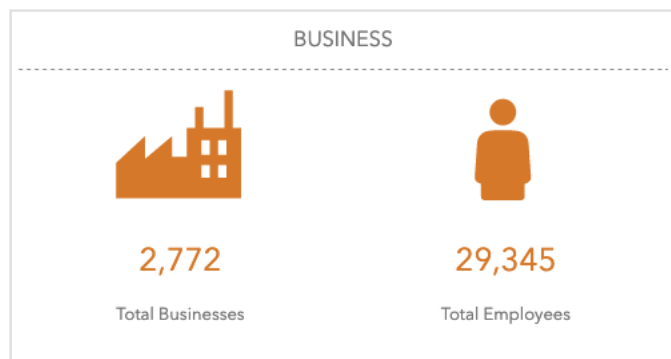
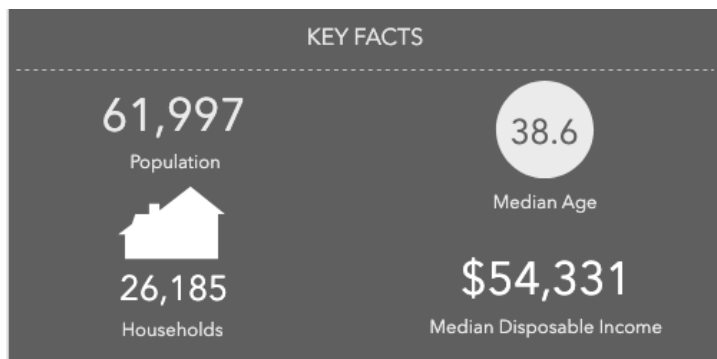
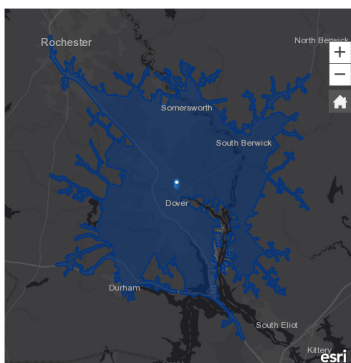
Each Office Independently Owned and Operated [kwclcg.com/](http://kwclcg.com/)

We obtained the information above from sources we believe to be reliable. However, we have not verified its accuracy and make no guarantee, warranty or representation about it. It is submitted subject to the possibility of errors, omissions, change of price, rental or other conditions, prior sale, lease or financing, or withdrawal without notice. We include projections, opinions, assumptions or estimates for example only, and they may not represent current or future performance of the property. You and your tax and legal advisors should conduct your own investigation of the property and transaction.



# 15 MINUTE DEMOGRAPHICS

142 Broadway Street, Dover, NH 03820



#### Tapestry Segments

<b>5B In Style</b> 4,254 households	<b>16.2%</b> of Households	▼
<b>8C Bright Young Professionals</b> 3,105 households	<b>11.9%</b> of Households	▼
<b>8B Emerald City</b> 2,965 households	<b>11.3%</b> of Households	▼



**KELLER WILLIAMS COASTAL REALTY**  
603.610.8500  
750 Lafayette Rd.,  
Suite 201 - Coastal Land & Commercial Group  
Portsmouth, NH 03801

**DAVE GARVEY**  
Managing Director  
O: 603.610.8523  
C: 603.491.2854  
davegarvey@kwcommercial.com  
NH #004637

**ETHAN ASH**  
Commercial & Investment Specialist, MICP  
O: +16036108500 X1430  
C: 603.707.2319  
ethan.ash@kw.com  
NH #071469

Each Office Independently Owned and Operated [kwclcg.com/](http://kwclcg.com/)

We obtained the information above from sources we believe to be reliable. However, we have not verified its accuracy and make no guarantee, warranty or representation about it. It is submitted subject to the possibility of errors, omissions, change of price, rental or other conditions, prior sale, lease or financing, or withdrawal without notice. We include projections, opinions, assumptions or estimates for example only, and they may not represent current or future performance of the property. You and your tax and legal advisors should conduct your own investigation of the property and transaction.