



C04890

Lockwood , Montana 59101

Property Highlights

- FOR SALE \$375,000
- Great Exposure to I-90
- Lockwood Water and Sewer in Old Hardin Road
- 3.069 Acres
- Zoned Highway Commercial

Property Description

Located Just off the Lockwood Exit on I-90

OFFERING SUMMARY

Sale Price	\$375,000
Lot Size	3.069 Acres

DEMOGRAPHICS

Stats	Population	Avg. HH Income
1 Mile	10,049	\$73,842
3 Miles	53,980	\$63,940
5 Miles	89,089	\$62,623

For more information

Brian McDonald

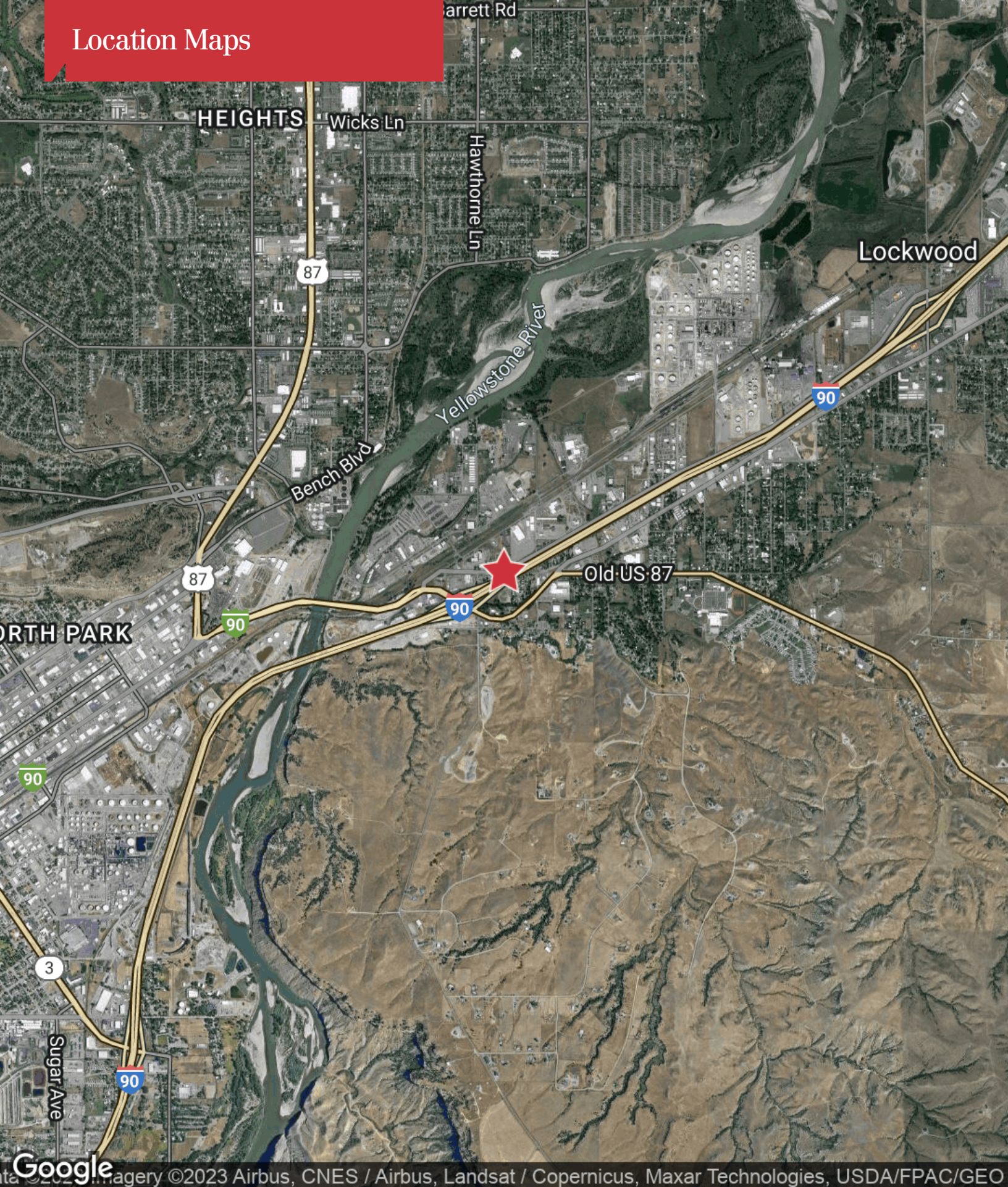
O: 406 294 6303

bmcdonald@naibusinessproperties.com

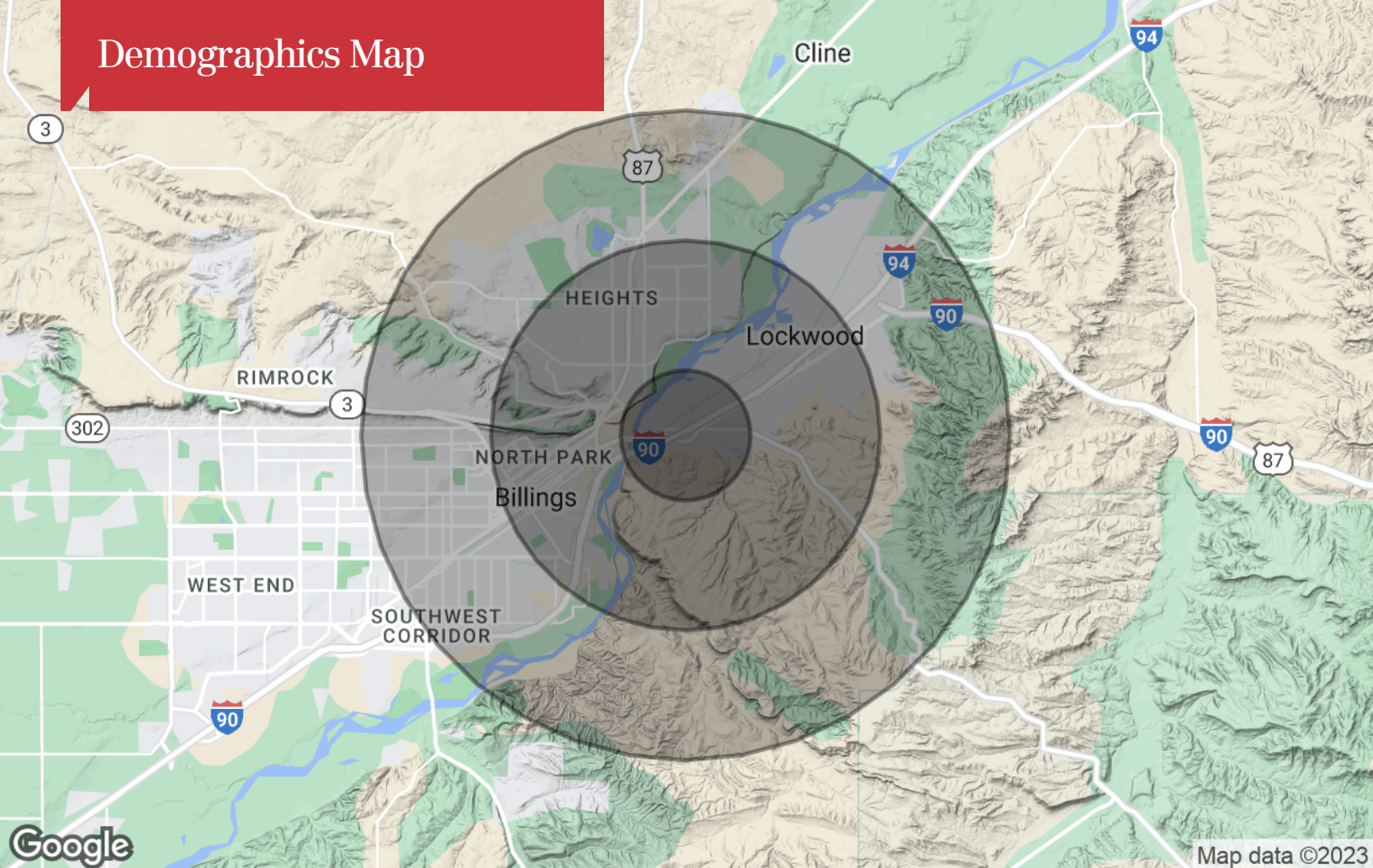
Additional Photos



Location Maps



Demographics Map



Population

	1 Mile	3 Miles	5 Miles
TOTAL POPULATION	10,049	53,980	89,089
MEDIAN AGE	48.0	41.5	39.0
MEDIAN AGE (MALE)	45.5	39.1	36.9
MEDIAN AGE (FEMALE)	49.9	43.3	41.4

Households & Income

	1 Mile	3 Miles	5 Miles
TOTAL HOUSEHOLDS	4,312	23,991	39,431
# OF PERSONS PER HH	2.3	2.3	2.3
AVERAGE HH INCOME	\$73,842	\$63,940	\$62,623
AVERAGE HOUSE VALUE	\$236,224	\$203,304	\$208,043

* Demographic data derived from 2020 ACS - US Census