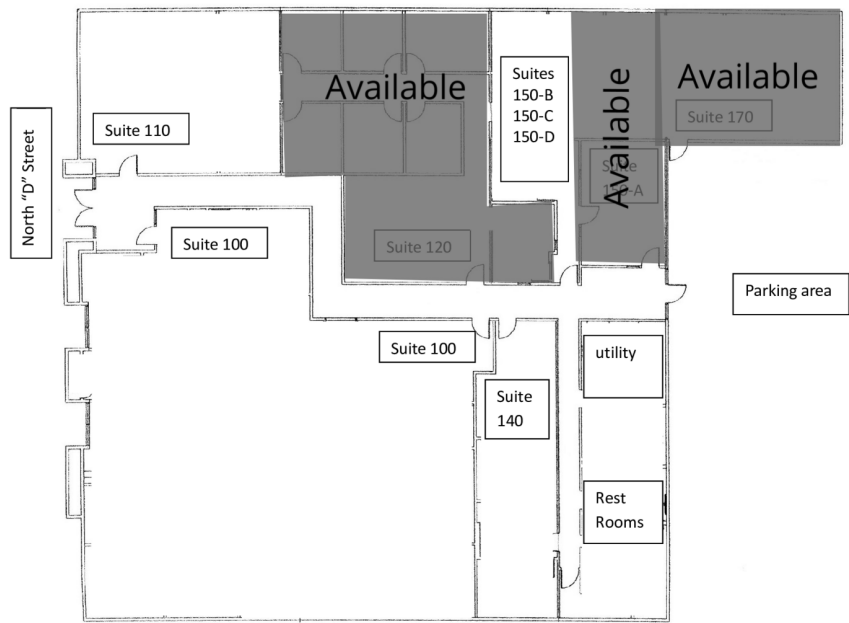


MOVE IN READY OFFICES SUITES



AVAILABLE

LEASE TYPE FULL SERVICE | TOTAL SPACE 684 - 1,888 SF | LEASE TERM NEGOTIABLE | LEASE RATE \$1.25 SF/MONTH

SUITE	TENANT	SIZE	TYPE	RATE	DESCRIPTION
Suite 150	Available	815 SF	Full Service	\$1.25 SF/month	multiple offices - electricity included - no CAM or NNN
Suite 170	Available	684 SF	Full Service	\$1.25 SF/month	three offices - electricity included - no CAM or NNN
Suite 120	Available	1,888 SF	Full Service	\$1.25 SF/month	multiple offices and open area - electricity included - no CAM or NNN

STEVEN D. ROPPEL
909.297.0881
sroppe@gmail.com
CalDRE #01151111

